

INSTALLATION OF MERTIK WIFI BOX



Manufactured by
Planika Sp. z o.o.
ul. Bydgoska 38
86-061 Brzoza
Poland

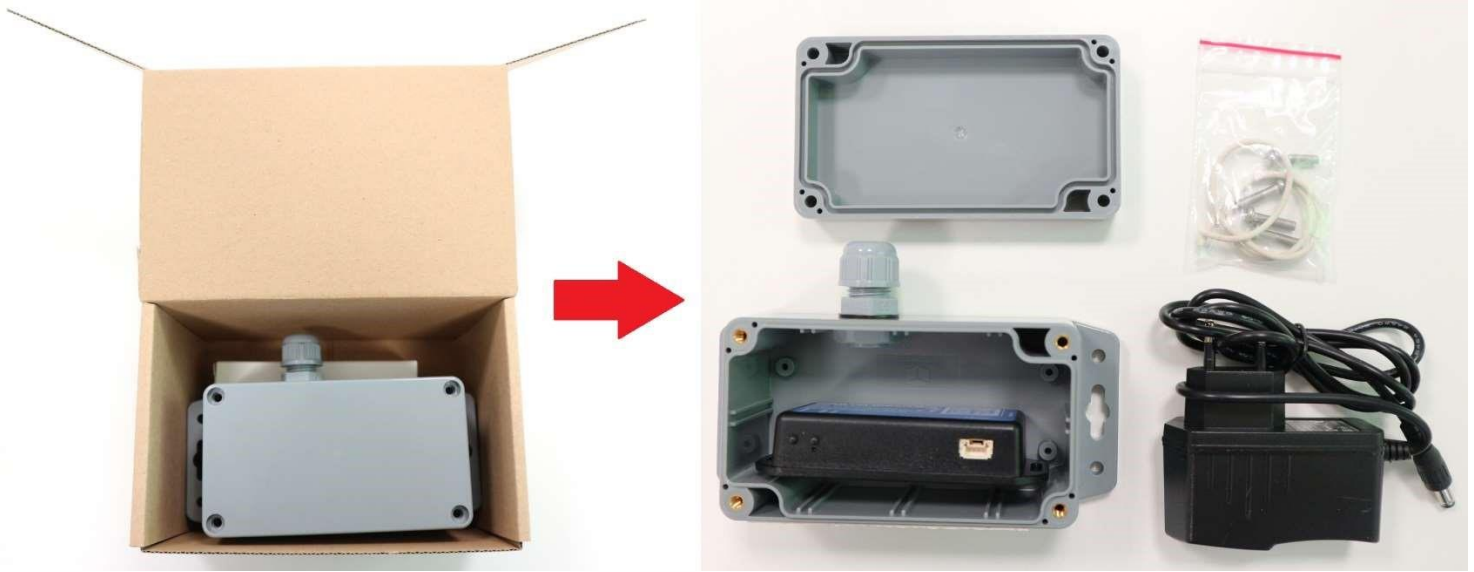
IT IS OBLIGATORY TO READ AND KEEP THIS INSTRUCTION.

Table of content

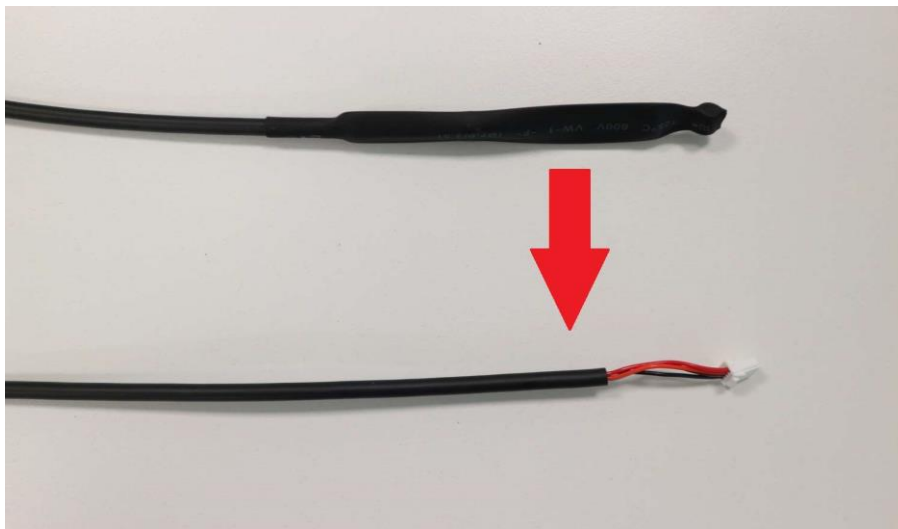
1. INSTALLATION	3
2. SETTING UP MYFIRE APP	6
2.1. INITIAL SETUP	6
2.2. REGISTRATION	6
2.3. LOGIN	6
2.4. PAIRING THE MYFIRE WIFI BOX	7
3. MANUFACTURER'S CONTACT DETAILS	10

1. INSTALLATION

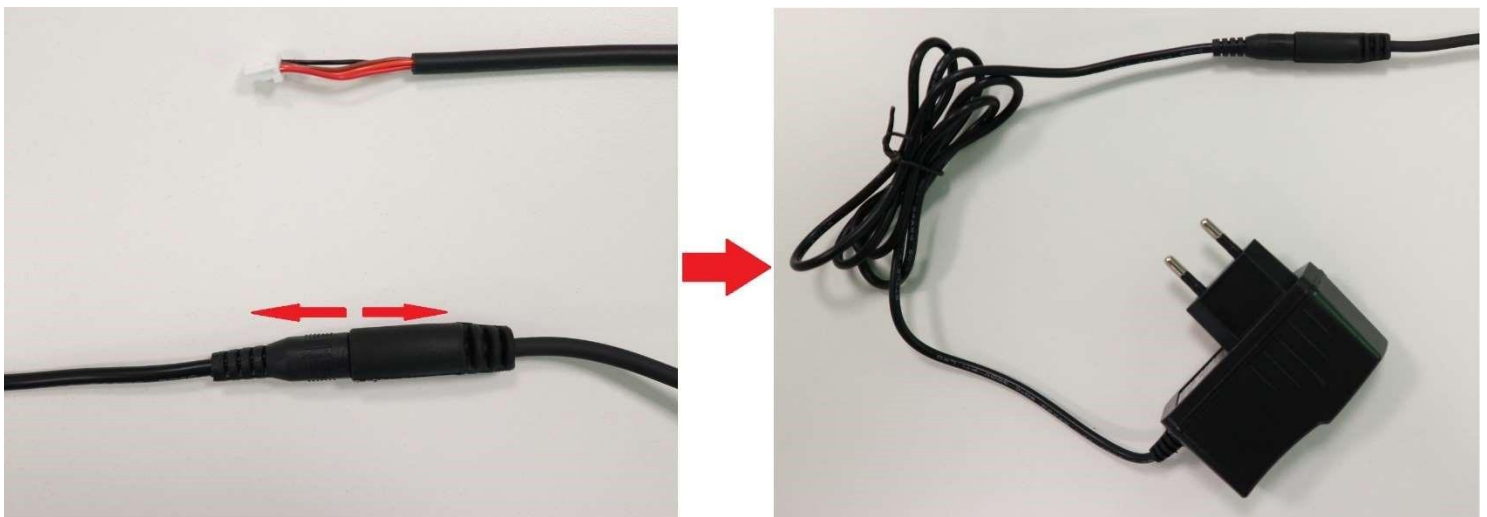
Unbox Wi-Fi Box Kit



Remove protective cover from the Wi-Fi cable



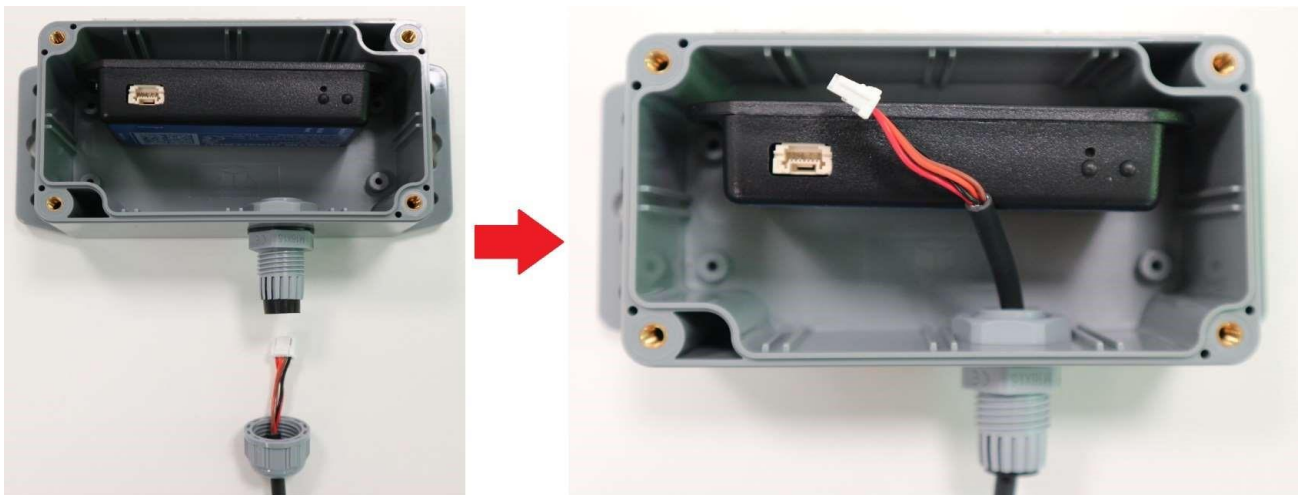
Unplug the battery cable and connect the main power supply



Unscrew the nut of cable bushing. Make sure that the rubber gasket is on place



Place Wi-Fi Box cable through the nut (first) and sealed cable bushing into the protective box. Make sure that the rubber gasket stays on place



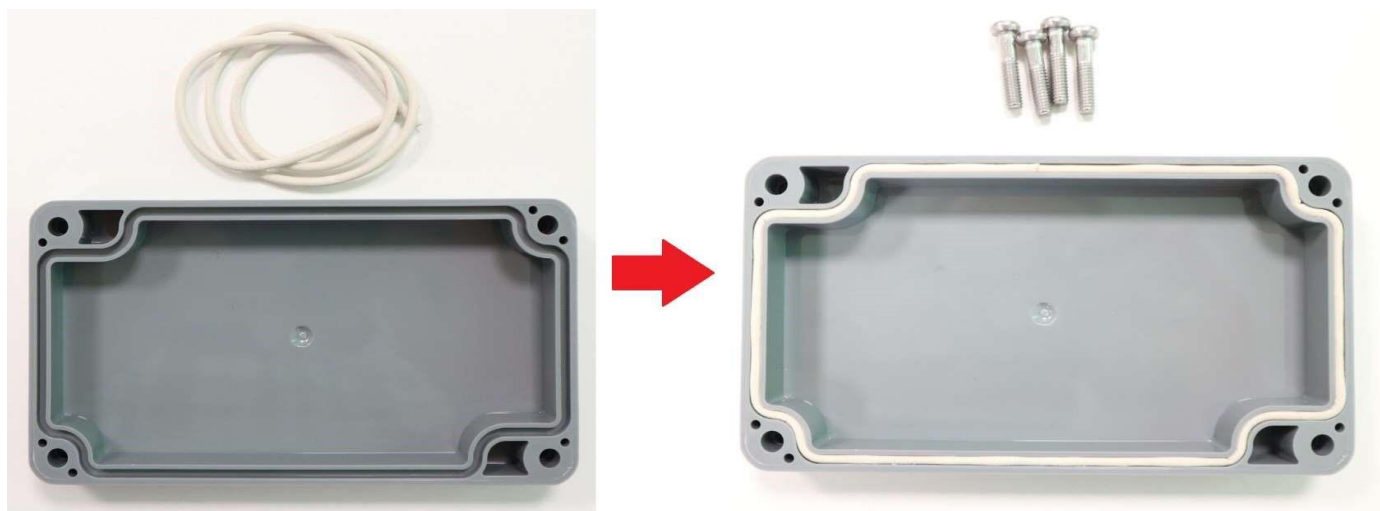
Connect the cable Wi-Fi



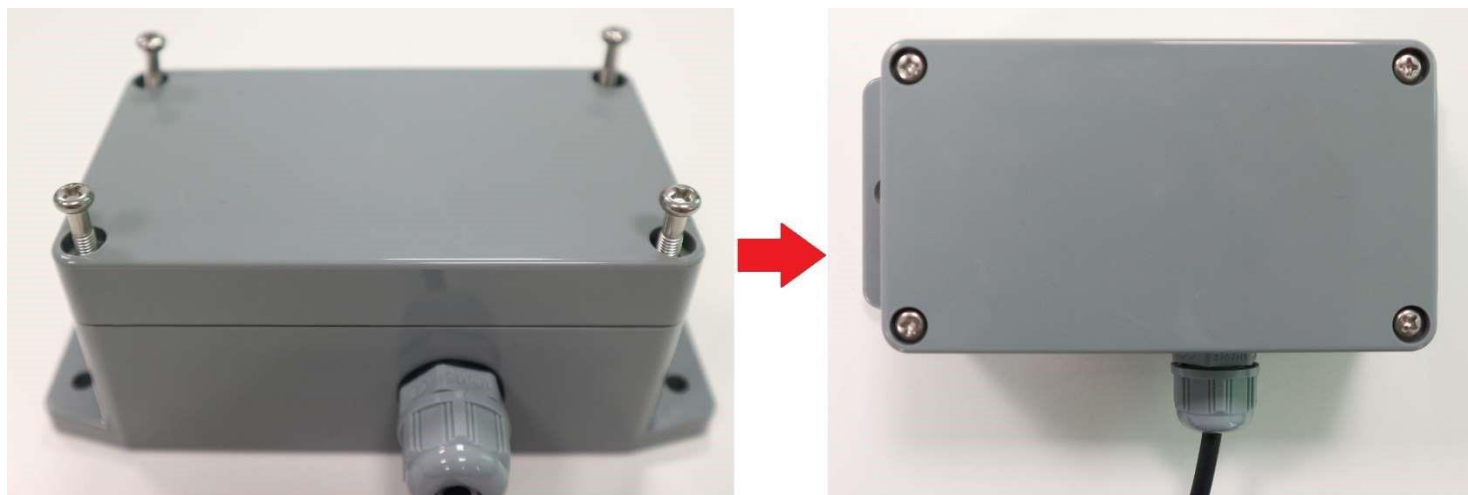
Screw the nut to seal the connection



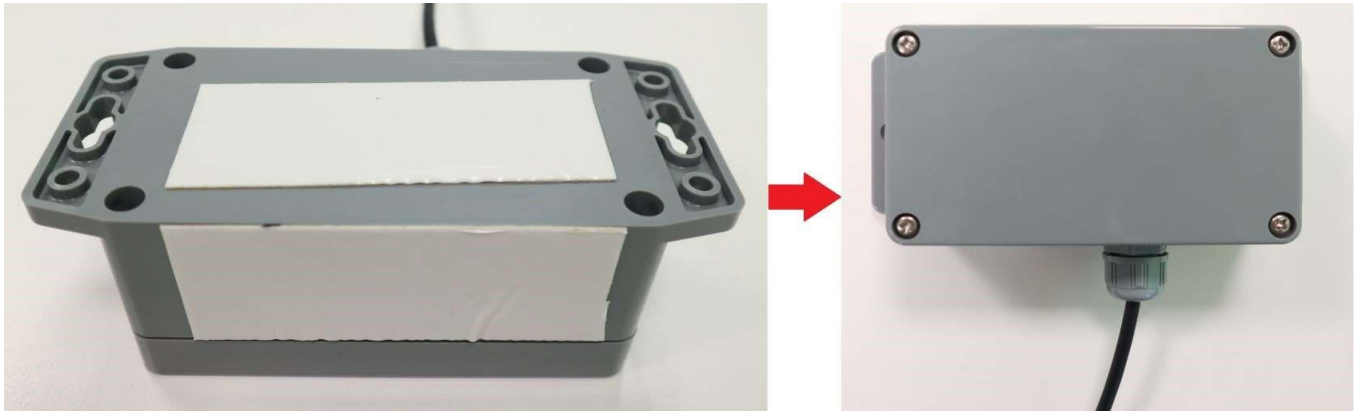
Place sealing gasket on the protective box cover



Screw the cover with 4 screws



Install the protective box in place where the Wi-Fi network coverage has the strongest signal. Use one of the adhesive side or screws to install the box on the flat surface. If possible, make sure that the cable bushing is facing downwards



After connecting myfire Wi-Fi box to mains power please do a hard reset by holding the RESET button for 20 secs.

RESET STATUS ON MYFIRE WI-FI BOX		
Press Reset Button	LED	Function
1sec - Reset	WLAN LED 2 flashes, green and blue.	If no network is set, the AP Mode will be activated for 2 hours. When the network isn't set after 2 hours, the Wi-fi Box will go to Standby Mode. Once a network is set, the Wi-Fi Box will connect directly.
7sec -Reset	Receiver LED flashes every 500ms in blue.	Removes the Wi-Fi settings and turns on the Access point (AP mode) for 2 hours.
20sec - Reset	Receiver LED flashes every 50ms in blue.	Erases all Setup Data including Wi-Fi settings. The AP-mode will be activated for 2 hours.

2. SETTING UP MYFIRE APP

NOTICE: For myfire App setup, you will need your Wi-Fi network SSID and password.

2.1. INITIAL SETUP

- Download myfire App from Apple App Store or Google Play Store,
- Touch the screen to start setup,
- Choose language, temperature and time format.

2.2. REGISTRATION

NOTE: You must register before logging in. Registration is one time only.

- Fill the data and accept "Privacy Policy",
- Touch "OK" in pop-up notice,
- Touch link to confirm email verification,
- You will be shown a message that you have successfully registered the myfire App,
- Return to App.

2.3. LOGIN

- Fill in your registration password,
- Accept "Terms and Conditions",
- Touch the "logging" button.

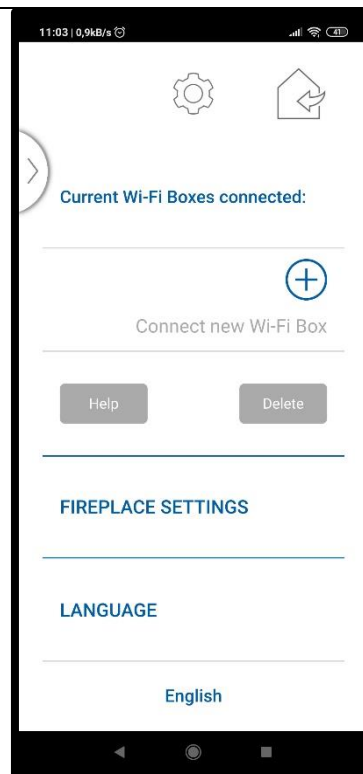
2.4. PAIRING THE MYFIRE WIFI BOX

After logging into the App and setting up myfire Wi-Fi box it's time for pairing the myfire Wi-Fi box with your Smart Device Standard.

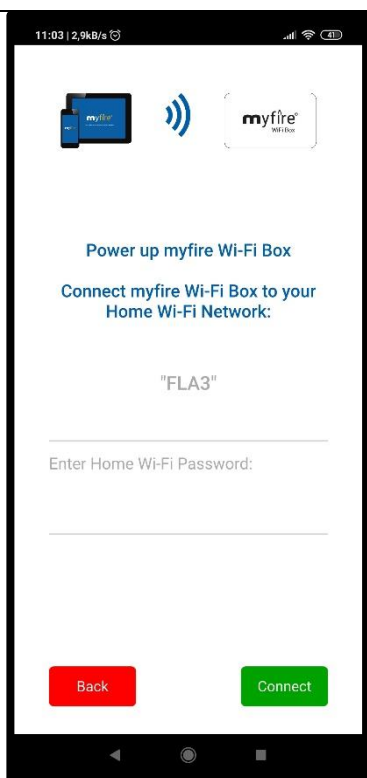
1. Click on the settings menu button (gear).



2. Click the "Connect new Wi-Fi Box" button.



3. Connect Wi-Fi box to your home network.



4. If error occurred please follow standard setup, if Wi-Fi Box connected properly, skip to step 10.

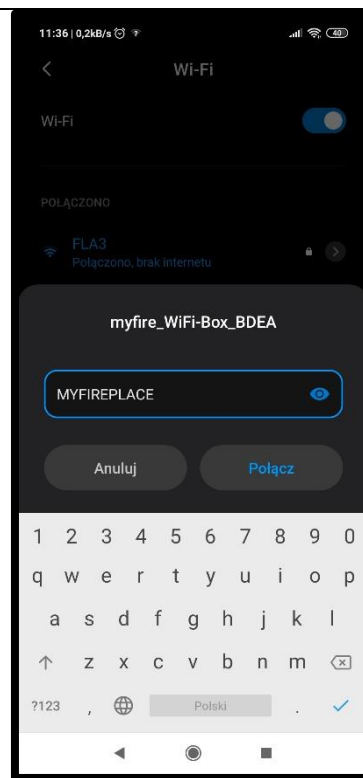


NOTE: Please disable Auto connect Wi-Fi option in your Smart Device. Make sure that your Smart Device stays connected only with your home network and does not switching to others networks which are not paired with myfire Wi-Fi Boxes and App. Otherwise Wi-Fi won't work properly.

5. Connect your Smart Device to myfire Wi-Fi box.



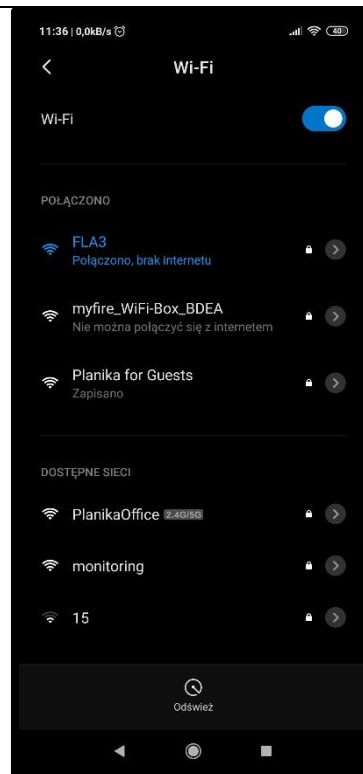
6. Select "myfire_WiFi-Box" and enter the password: "MYFIREPLACE".



7. Click "OK" and go to the Wi-Fi settings.



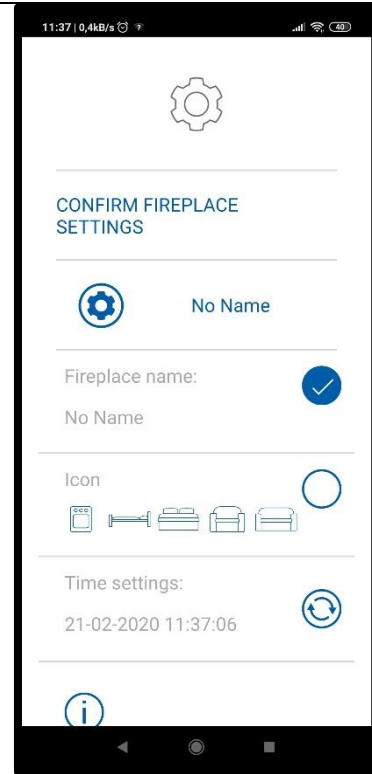
8. Change you Wi-Fi settings and connect to your home network.



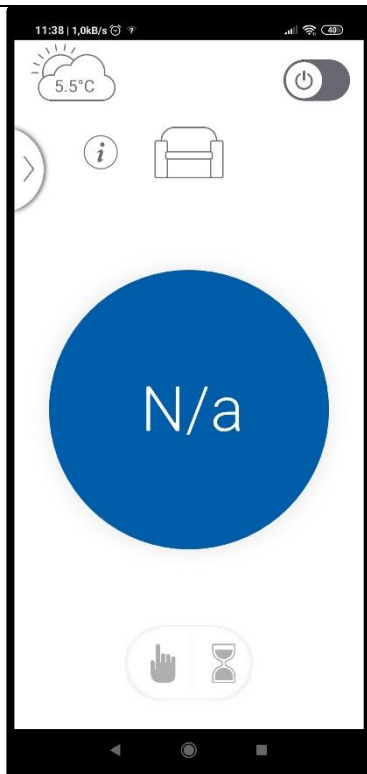
9. Wait until you connect with your home network.



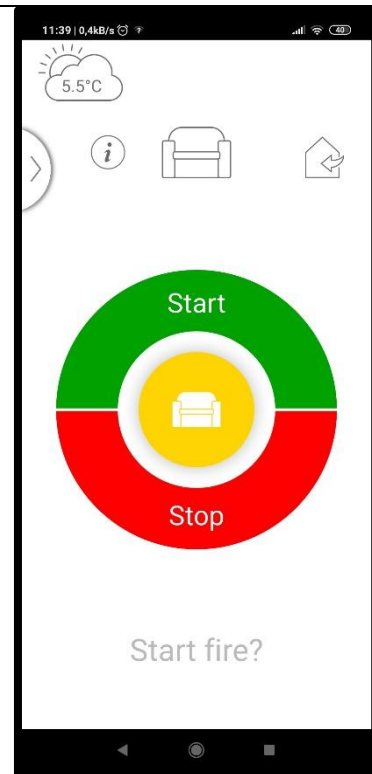
10. After successful pairing devices set a name of the fireplace and change the display icon.



11. Use a slider in top right corner to switch on the fireplace.



12. Now you are able to control the fireplace with your Smart Device.

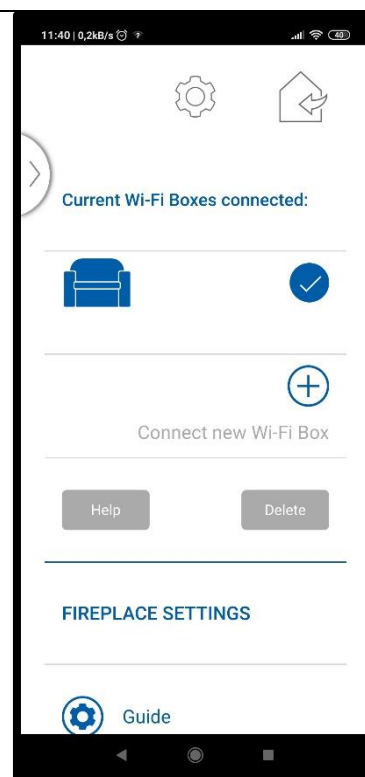


If you are having multiple fireplaces with myfire Wi-Fi Boxes you can add them up in the settings menu. It's possible to connect up to 5 fireplaces for one Smart Device. To do that you have to follow above steps for every single myfire Wi-Fi module.

13. Go to the settings menu and click "Connect new Wi-Fi Box".



14. Every time you want to add a new fireplace, you have to follow all connection steps once again and connect new Wi-Fi Boxes with your Smart Device and home network.



Scan for myfire application website



3. MANUFACTURER'S CONTACT DETAILS

Company Name: Planika Sp. z o.o.
Address: Bydgoska 38
86-061 Brzoza
Poland
Telephone: + 48 52 364 11 60