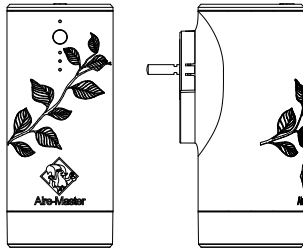




Aire-Master®

SCENTSCAPES® HOME PRODUCT MANUAL



I. CAUTIONS

To avoid casualties and property loss, please comply with the following.

INSTALLING



Prohibited

1. Do not use in an unsafe or faulty outlet.
2. Do not install the device at a place where children can touch.
3. Do not install the device at a plug where device remains loose.
4. Do not tilt the device.
5. Keep the device away from fire and heat source, do not store flammable and explosive materials around the device.
6. Except for the atomizer, the housing material is not resistant to corrosion.
7. Do not use device in high temperature or wet environment.
8. Do not use flammable, explosive, corrosive and other hazardous solvents in the device.

WARNING

May cause electric shock or fire hazard.



Note

May cause personal injury or property damage

NECESSARY WHEN INSTALLING

1. **Important to have proper airflow when diffusing fragrance oils.** Lack of airflow can lead to wet fallout which can damage varnish or painted surfaces.
2. Ensure the diffuser is plugged in securely.
3. Install the device in a space with adequate ventilation.
4. Do not block the atomizing port when the device is working.
5. Do not spill water or conductive, corrosive liquid on the inside or outside of device.
6. Unplug the diffuser in extreme weather.

II. DIFFUSER FEATURES



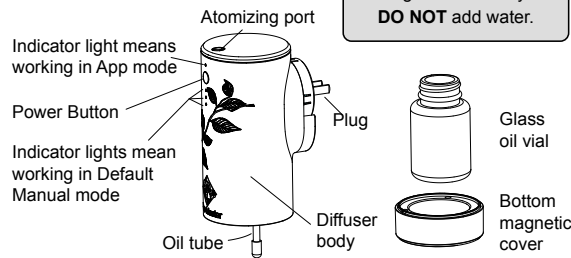
Voltage: 110V
Power: 1.5W
Capacity: 2oz or 60ml
Volume: ≤35dba
Weight: 0.86LB or 0.39KG

Coverage: Up to 882 Sq. Ft. with 8ft. ceiling or 100–200m³
Size: C 3.98" x D 2.98" x H 6.14" or C101*D68*H156mm

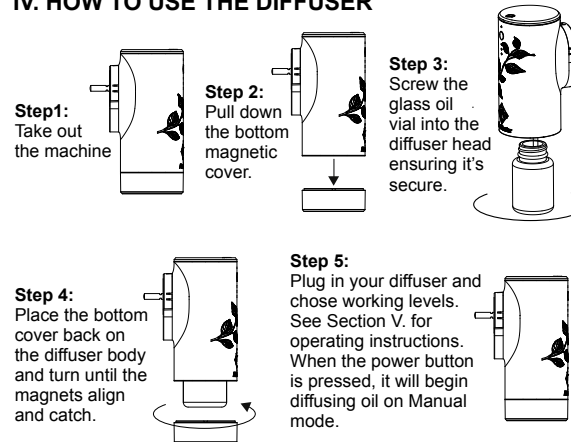
ATTENTION

This diffuser is designed to atomize Aire-Master fragrance oils only.
DO NOT add water.

III. DIFFUSER PARTS



IV. HOW TO USE THE DIFFUSER



V. OPERATING INSTRUCTIONS

One button, four LED indicator lights

1. Button description:

- (A) Press button: Every time you hit the button, the levels adjust from 1 to 3 in intensity and run on continuous cycles.
- (B) Hold Button: Hold button for 3-6 seconds until you hear a long beep to turn the machine on or off.

2. Description of LED indicator light:

- (A) When the machine is off, No LED lights are on.
- (B) **Default Manual working mode:** When the machine is working, the number of LED lights indicates the work intensity level:
 - **Level 1:** Atomizes 15 seconds, Pause 900 seconds continuous cycle, 1 LED light on when working
 - **Level 2:** Atomizes 15 seconds, Pause 600 seconds continuous cycle, 2 LED lights on when working
 - **Level 3:** Atomizes 15 seconds, Pause 300 seconds continuous cycle, 3 LED lights on when working
- (C) **App working mode:**
 - The work seconds and pause seconds settings range from 5 to 900 seconds.
 - When the work time setting on the App is the same as the 3 levels on the Default Manual working mode, the machine will work in Default Manual working mode.
 - When the work time setting on the App is different than the Default Manual working mode, the machine will work in the App mode, and the App mode LED light will be on.

3. The Default Manual working mode versus App control mode:

- (A) If the working time is set by the App, the machine is working according to the App mode at this time.
- (B) If the power button is pressed to select the working levels, the machine is working according to the Default Manual mode. The Default mode is a 24-hour continuous cycle.

4. Factory system reset:

- (A) Unplug the diffuser from the outlet.
- (B) Hold down the power button.
- (C) Plug in the diffuser and until you hear 5 short beeps.
- (D) You will hear 1 short beep again, and the system has successfully reset.

Factory reset work time: The Default Manual working mode in level 1.

VI. APP OPERATIONS AND SETTINGS

You can download the “Aire-Master” App from the IOS and Google Play Stores for advanced control. Once downloaded, connect to the diffuser using WIFI or Bluetooth by using the code “1234” to pair. **Through the app, you can create a more intense scenting schedule** and adjust the intensity according to your preferences.



IOS APP



Android APP

VII. TROUBLESHOOTING

No scent	<ol style="list-style-type: none"> 1. Check to see if outlet is working. 2. If in App mode, check to see if the diffuser is scheduled to work. 3. Switch to manual mode to see if pump is working. 4. Check the pump tube and oil tube connection.
Weak scent	<ol style="list-style-type: none"> 1. Check the sealing ring of air outlet tube for damage and the suction pipe to see if bent or blocked. 2. Check the atomizer nozzle for a loose fitting.
Oil leak	<ol style="list-style-type: none"> 1. Check the atomizer for damage. 2. Check oil bottle to see if screwed in tightly and not at an angle.
If Diffuser tips over with oil in it	<ol style="list-style-type: none"> 1. Clean diffuser using the instructions for cleaning under Section X. Machine Maintenance. 2. In case of an oil spill, clean the surface immediately to avoid any potential damage to your carpet, varnish, or painted surfaces.
Unusual noise	<ol style="list-style-type: none"> 1. Check the bottom cover to see if magnets are secured properly. 2. Make sure unit is plugged in tightly to the outlet.

IX. AFTER-SALES SERVICE AND RETURNS

1. After-sales service

Technical solutions and installation process guidance are found at airemasterhome.com or call 800-525-0957.

2. Equipment returns

- (A) All devices must be returned in their original boxes within 30 days of purchase.
- (B) Please provide proof of purchase.
- (C) If product is damaged in shipping, please email customer service at amhome@airemaster.com or call 800-525-0957.
- (D) See our website airemasterhome.com for terms and conditions on returns.

X. MACHINE MAINTENANCE

1. Cleaning Inside

- (A) Periodically clean every 2-3 months. More often if performance lags.
- (B) Either pour leftover fragrance oil in another glass container or discard contents of vial (See Section XII). Fill with rubbing alcohol, being careful to not overfill alcohol into the neck of the bottle.
- (C) Purge through the machine by the Default Manual settings, run through 3 to 4 times.
- (D) Pour leftover or new fragrance oil back in vial.

2. Cleaning outside*

Wipe down with a soft cloth and light detergent.

***Never submerge diffuser in water!**

XI. LONG-TERM NON-USE

- (A) Unplug the diffuser.
- (B) Clean the diffuser using the instructions for cleaning under Section X. Machine maintenance.
- (C) Store in a clean, dry environment.

XII. DISPOSAL OF OILS AND BOTTLES

When disposing of any leftover fragrance oils, check the material safety data sheet (MSDS) for specific instructions on disposal or call your local waste management facility.

DO NOT pour oil down the drain as it can cause damage to your plumbing.

Remember that essential oils are flammable and should never be disposed of near an open flame or heat source.

Consider recycling any empty glass bottles.

XIII. FCC COMPLIANCE

This device complies with part 15 of the FCC Rules. Operation is subject to the following two conditions: (1) This device may not cause harmful interference, and (2) this device must accept any interference received, including interference that may cause undesired operation.

FCC warning:

Any changes or modifications not expressly approved by the party responsible for compliance could void the user's authority to operate the equipment.

Note: This equipment has been tested and found to comply with the limits for a Class B digital device, pursuant to part 15 of the FCC Rules. These limits are designed to provide reasonable protection against harmful interference in a residential installation. This equipment generates uses and can radiate radio frequency energy and, if not installed and used in accordance with the instructions, may cause harmful interference to radio communications. However, there is no guarantee that interference will not occur in a particular installation. If this equipment does cause harmful interference to radio or television reception, which can be determined by turning the equipment off and on, the user is encouraged to try to correct the interference by one or more of the following measures:

- Reorient or relocate the receiving antenna.
- Increase the separation between the equipment and receiver.
- Connect the equipment into an outlet on a circuit different from that to which the receiver is connected.
- Consult the dealer or an experienced radio/TV technician for help.

This equipment complies with FCC radiation exposure limits set forth for an uncontrolled environment. This equipment should be installed and operated with minimum distance 20cm between the radiator and your body.



Aire-Master®

airemasterhome.com

amhome@airemaster.com

800-525-0957