

Fairgates

ABCDEFGHIJKLMNOPQRSTUVWXYZ

abcdefghijklmnopqrstuvwxyz

0123456789

Positioned somewhere in the middle of a neo-grotesque/geometric spectrum, Fairgates has a distinct roundness, while not being too wide for longer passages of text. A multi-purpose sans serif with small, soft curves on certain glyphs that gives it an understated, friendly character. Fairgates is designed to have no perceivable contrast between horizontal and vertical strokes.

Roman & Italic Medium 20 pt + Stylistic alternatives

ABCDEFGHIJKLMNOPQRSTUVWXYZ
abcdefghijklmnopqrstuvwxyz Yag

ABCDEFGHIJKLMNOPQRSTUVWXYZ
abcdefghijklmnopqrstuvwxyz Yag

Medium 14 pt / SemiBold Italic 8 pt

0123456789

Medium 14 pt / SemiBold Italic 8 pt

0123456789

Medium 14 pt / SemiBold Italic 8 pt

0123456789

Superiors & Inferiors Medium 14 pt

0123456789 0123456789

Medium 14 pt / SemiBold Italic 8 pt

$$\frac{1}{2} \frac{1}{3} \frac{2}{3} \frac{1}{4} \frac{3}{4} \frac{1}{5} \frac{2}{5} \frac{3}{5} \frac{4}{5} \frac{1}{8} \frac{3}{8} \frac{5}{8} \frac{7}{8} \frac{1}{9} \frac{1}{10}$$

Regular 20 pt / SemiBold Italic 8 pt

ß ¤ ⱡ \$ € ₣ £ ¥ + - × ÷ = ≠ > < ≥ ≤ ± ≈ ∼ ¬ ^ ∅ ∞ ∫ π Σ √ ∂ μ
 % ‰ † ‡ → ↘ ↓ ↙ ← ↖ ↔ ↑ @ & ¶ § © ® ™ ° | ¡ ‡ # №
 ß ¤ ⱡ \$ € ₣ £ ¥ + - × ÷ = ≠ > < ≥ ≤ ± ≈ ∼ ¬ ^ ∅ ∞ ∫ π Σ √ ∂ μ % ‰ † ‡ → ↘ ↓ ↙ ← ↖ ↔ ↑ @ & ¶ § © ® ™ ° | ¡ ‡ # №

Regular 20 pt / SemiBold Italic 8 pt

ΓΔΩεπ

Regular 20 pt / SemiBold Italic 8 pt

.,:,...!;?¿·•*#/\(){}[]---_,«»<>""
 ,:,...!;?¿·•*#/\(){}[]---_,«»<>""

Fairgates comes in seven weights:

Extrabold, Bold, SemiBold, Medium, Regular, Light & Extralight.

The Family pack includes variable versions as well.

Roman

Roman 8,5 pt / Metric kerning / Tracking -10

RR
RRRRRRR

Moons in retrograde orbits cannot form in the same region of a solar nebula as the planets they orbit, so Triton must have been captured from elsewhere. It might therefore have originated in the Geiger belt, a ring of small icy objects just inside the orbit of Neptune to about 50 AU from the big sun that is in the center. Crystallization of this magma ocean would have created a mafic mantle from the precipitation and sinking of the minerals olivine

Italic

Italic 8,5 pt / Metric kerning / Tracking -10

RR
RRRRRRR

Moons in retrograde orbits cannot form in the same region of a solar nebula as the planets they orbit, so Triton must have been captured from elsewhere. It might therefore have originated in the Geiger belt, a ring of small icy objects just inside the orbit of Neptune to about 50 AU from the big sun that is in the center. Crystallization of this magma ocean would have created a mafic mantle from the precipitation and sinking of the minerals olivine



Aa Bb Cc Dd
Ee Ff Gg Hh
Ii Jj Kk Ll Mm
Nn Oo Pp Qq
Rr Ss Tt Uu Vv
Ww Xx Yy Zz
0123456789

Fairgates has some handy features when it comes to weight distribution and certain letter shape combinations. It also has the mandatory single storey **a** and **g**, as well as a bent lowercase **l** and an asymmetric uppercase **Y**.

Weight Distribution



The weight distribution over the fonts is not linear, instead Fairgates allows for more granular control over the thinner weights before increasing more rapidly over the heavier ones - this comes in handy when finding a balance between font size & font weight for paragraph text. The variable versions included in the family pack allows for even more precise control.

Stylistic Sets

Yearling
 Yearling
 Yearling
 Yearling
 Yearling

Yearlings long for frequencies
 turning to years of chorals

Standard set

Yearlings long for frequencies
 turning to years of chorals

Style set 1
 Asymmetric uppercase Y

Yearlings long for frequencies
 turning to years of chorals

Style set 2
 Single storey lowercase a

Yearlings long for frequencies
 turning to years of chorals

Style set 3
 Single storey lowercase g

Yearlings long for frequencies
 turning to years of chorals

Style set 4
 Bent lowercase l

Automatic contextual alternates & ligatures



The definition of
 ordinary matter is
 far more than its
 first longjump
 would suggest.

Contextual alternates & ligatures triggered by specific letter combinations:

Narrow terminal on f when paired with tall vertical letter shapes (l, k, b, h, t, i & j)

The cross strokes on double t:s fuse together on the Bold and ExtraBold weights. Set to trigger as a ligature (spacing/tracking dependent)

Narrow descender on j when paired with g

Wider terminal on r when paired with round letter shapes (a, c, d, e, g & o)

Fairgates is well suited for packaging and editorial design as well as infographics. Tabular figures help to keep things tidy.

NTF-01 / LSB77-NR21

FROM→

BERLIN

Date of departure
25 October 2021



→TO

Destination	Distance	Price	Carrier	Departure	Arrival
Haparanda	2.315 Km	€ 169	North Border Alliance	15:15	20:35 / +1 Day
Kalix	2.468 Km	€ 149	Zephyr International	09:35	12:20
Älvsbyn	3.666 Km	€ 215	Crystal Shuttle	12:55	03:25 / +2 Days
Råneå	3.280 Km	€ 245	Kängsön Airlines	07:19	21:11



€

8.50

\$

12.95

£

9.95

₹

32.55

Nutrition Facts

Per 100g

Water, Soy Protein Concentrate, Coconut Oil, Sunflower Oil, Natural Flavors, 2% Or Less Of: Potato Protein, Methylcellulose, Yeast Extract, Cultured Dextrose, Food Starch Modified, Soy Leghemoglobin, Salt

Fat 19gram

Protein 13gram

Carbohydrates 12gram

13:24 Tele4

4G

Latest stock rates

19 May 2021

Lord Daun
AutomobileWeekly Average
+2.15%Monthly
Average +1.85%NorbergType
FoundryWeekly Average
-1.95%Monthly
Average +2.15%Duke Linden
Vegan MayoWeekly Average
+2.85%Monthly
Average +2.35%

Trending Stocks to keep an eye on



Content paid by the Gemträsk Solar Society

Why solar is the future, baby

READ MORE →

Stories Top stories from all around the world

BREXIT

Boris Johnson likes to pretend that free-trade deals are easy and have no downside. →

US ELECTION

'This is democracy's day': Biden sworn in as 46th president of the United States. →

SWEDEN

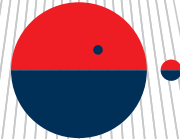
Former crust punk invents mind blowing vegan mayo, starts a startup, raises 290 million investment →

TECH

Berglund Solutions set to release monitor stand 'Will revolutionize the home office' →

Haparanda
Annual Design
Conference

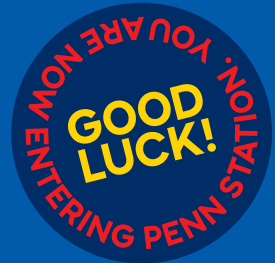
2021



HADC21

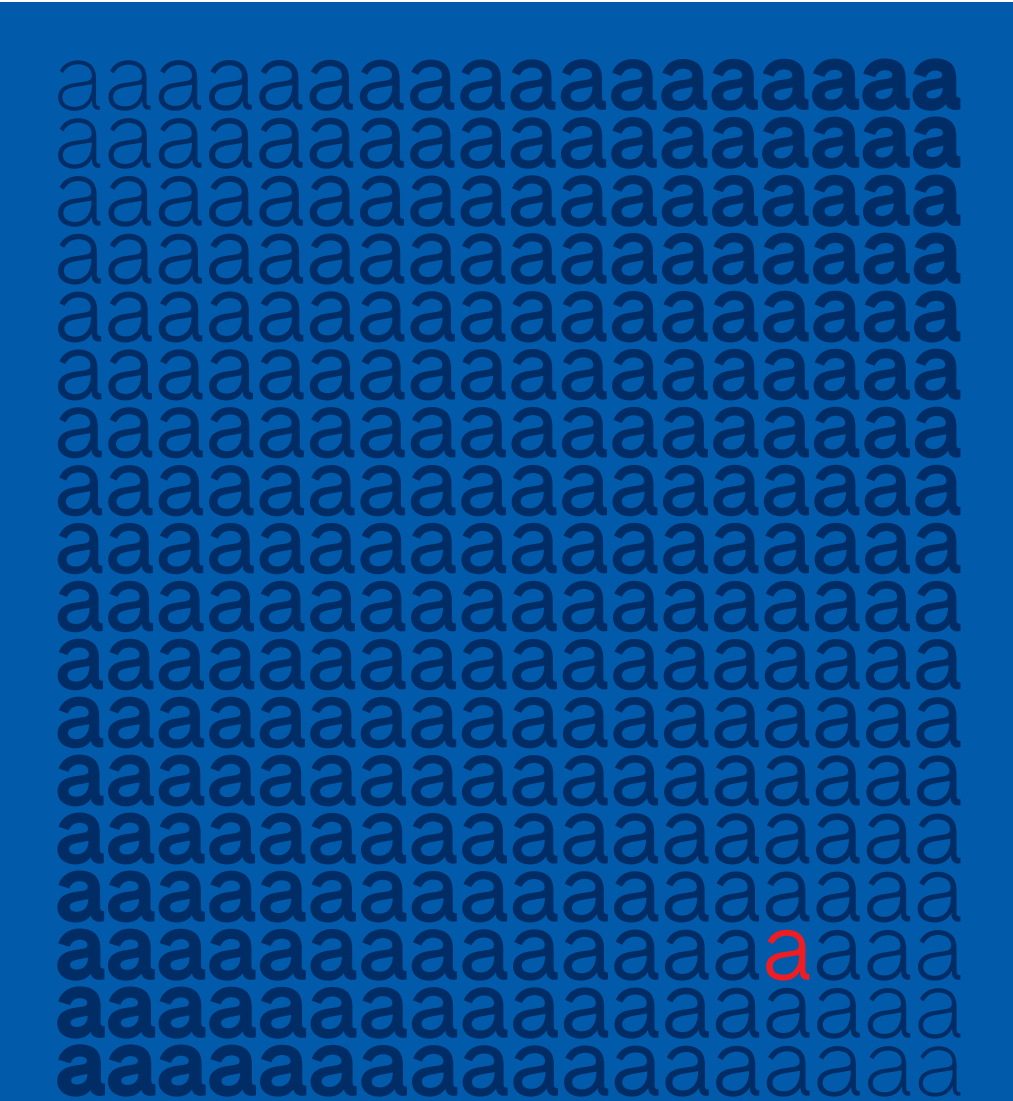
Seat 21 / Row 9
#402NBTF

www.gadc.io

He went
→
that way.

*Robert was
in the bright
room as May
sighed a sigh
so deep that
the herons
took flight*

64pt Regular Italic



The variable versions included in the family packs opens up for even more precise control and allows for weights between weights. Good for the perfectionists, bad for the indecisive. Either way, it's the future.

-●.....
- ExtraLight
- Light
- Regular
- Medium
- SemiBold
- Bold
- ExtraBold

Multilingual

[illegible]

Abenaki / **Afaan Oromo** / Afar / **Afrikaans** / Albanian / **Alsation** / Amis / **Anuta** / Aragonese / **Aranese** / Aromanian / **Arrernte** / Arvanitic (Latin) / **Asturian** / Atayal / **Aymara** / Azerbaijani / **Bashkir (Latin)** / Basque / **Belarusian (Latin)** / Bemba / **Bikol** / Bislama / **Bosnian** / Breton / **Cape Verdean Creole** / Catalan / **Cebuano** / Chamorro / **Chavacano** / Chichewa / **Chickasaw** / Cimbrian / **Cofán** / Cornish / **Corsican** / Creek / **Crimean Tatar (Latin)** / Croatian / **Czech** / Danish / **Dawan** / Delaware / **Dholuo** / Drehu / **Dutch** / English / **Esperanto** / Estonian / **Faroese** / Fijian / **Filipino** / Finnish / **Folkspraak** / French / **Frisian** / Friulian / **Gagauz (Latin)** / Galician / **Ganda** / Genoese / **German** / Gikuyu / **Gooniyandi** / Greenlandic (Kalaallisut) / **Guadeloupean Creole** / Gwichin / **Haitian Creole** / Hän / **Hawaiian** / Hiligaynon / **Hopi** / Hotçak (Latin) / **Hungarian** / Icelandic / **Ido** / Igbo / **Ilocano** / Indonesian / **Irish** / Istro-Romanian / **Italian** / Jamaican / **Javanese (Latin)** / Jèrriais / **Kaingang** / Kala Lagaw Ya / **Kapampangan (Latin)** / Kaqchikel / **Karakalpak (Latin)** / Karelian (Latin) / **Kashubian** / Kikongo / **Kinyarwanda** / Kiribati / **Kirundi** / Klingon / **Kurdish (Latin)** / Ladin / **Latin** / Latino sine Flexione / **Latvian** / Lithuanian / **Lojban** / Lombard / **Low Saxon** / Luxembourgish / **Maasai** / Makhwa / **Malay** / Maltese / **Manx** / Māori / **Marquesan** / Megleno-Romanian / **Meriam Mir** / Mirandese / **Mohawk** / Moldovan / **Montagnais** / Montenegrin / **Murrinh-Patha** / Nagamese Creole / **Nahuatl** / Ndebele / **Neapolitan** / Ngjyambaa / **Niuean** / Noongar / **Norwegian** / Novial / **Occidental** / Occitan / **Old Icelandic** / Old Norse / **Onëipöt** / Oshiwambo / **Ossetian (Latin)** / Palauan / **Papiamento** / Piedmontese / **Polish** / Portuguese / **Potawatomi** / Q'eqchi' / **Quechua** / Rarotongan / **Romanian** / Romansh / **Rotokas** / Sami (Inari Sami) / **Sami (Lule Sami)** / Sami (Northern Sami) / **Sami (Southern Sami)** / Samoan / **Sango** / Saramaccan / **Sardinian** / Scottish Gaelic / **Serbian (Latin)** / Seri / **Seychellois** / Shawnee / **Shona** / Sicilian / **Silesian** / Slovak / **Slovenian** / Slovio (Latin) / **Somali** / Sorbian (Lower Sorbian) / **Creole (Upper Sorbian)** / Sotho (Northern) / **Sotho (Southern)** / Spanish / **Sranan** / Sundanese (Latin) / **Swahili** / Swazi / **Swedish** / Tagalog / **Tahitian** / Tetum / **Tok Pisin** / Tokelauan / **Tongan** / Tshiluba / **Tsonga** / Tswana / **Tumbuka** / Turkish / **Turkmen (Latin)** / Tuvaluan / **Tzotzil** / Uzbek (Latin) / **Venetian** / Vepsian / **Volapük** / Vëro / **Wallisian** / Walloon / **Waray-Waray** / Warlpiri / **Wayuu** / Welsh / **Wik-Mungkan** / Wiradjuri / **Wolof** / Xavante / **Xhosa** / Yapese / **Yindjibarndi** / Zapotec / **Zarma** / Zazaki / **Zulu** / Zuni

Milan 1993

Berlin 2013

Råneå 1969

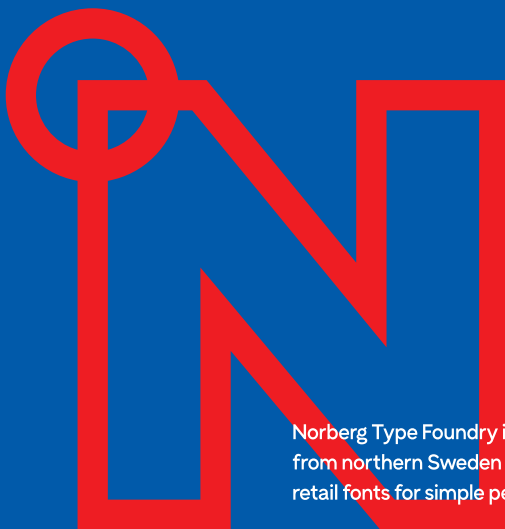
68pt Light / ExtraBold

Lyon 1824

Haag 1954

Kalix 1970

Malå 1625



Norberg Type Foundry is a small type foundry from northern Sweden that creates high quality retail fonts for simple people with exquisite taste.

©2021 Andreas Norberg / Norberg Type Foundry

www.norbergtypefoundry.com