

**PROSenP08 - Wall Mounted**



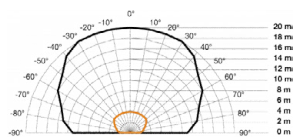
**FEATURES:**

- Passive infrared sensor
- 180° Detection angle with 90° aperture
- 20m Detection area
- 5.8Ghz HF system
- Wall mounted

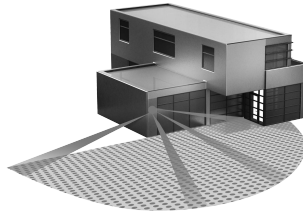
Ordering example: Product Name (e.g. PROSenP08)

Supply Voltage	Frequency	Brightness Measurement Range	Output	Time Delay Range	Frame Colour
----------------	-----------	------------------------------	--------	------------------	--------------

**DETAIL:**



**DETECTION AREA:**



**DIMENSIONS:**

