

## PROSenP01 (on/off)

IP20 rating



### FEATURES:

- Passive infrared sensor
- 360° Detection angle
- 7m Detection area
- Recessed mounted
- 55° Sensor head adjustment
- Dual output

Ordering example: Product Name (e.g. PROSenP01)

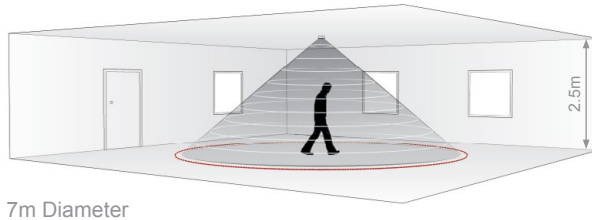
Supply Voltage	Frequency	Brightness Measurement Range	Output 1	Output 2 Dry Contact	Time Delay Range	Frame Colour
220V - 240V	50Hz	5/1000 Lux	1000W - Incandescent 900W - AC Halogen 180W - Fluorescent 150W - LED	400W - Incandescent 300W - AC Halogen 120W - Fluorescent 80W - LED	Time 1: 30s - 30min Time 2: 10s - 15min	White

### DETAIL:

Knock-out for AC cable entry

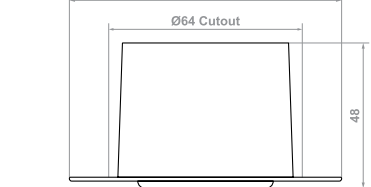
Note:  
Maximum cable size is 5 x 2.5mm<sup>2</sup>

### DETECTION AREA:



7m Diameter

### DIMENSIONS:



Power Box: 123(L) x 36(W) x 25(H)

## PROSenP02 (on/off)

IP20 rating



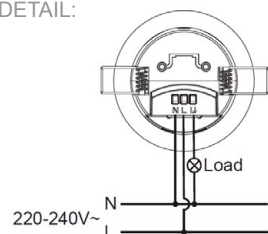
### FEATURES:

- Passive infrared sensor
- 360° Detection angle
- 7m Detection area
- Recessed mounted
- 3 PIN terminal

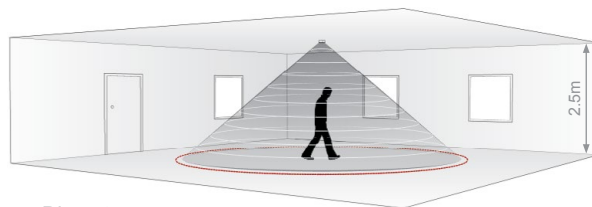
Ordering example: Product Name (e.g. PROSenP02)

Supply Voltage	Frequency	Brightness Measurement Range	Output	Time Delay Range	Frame Colour
220V - 240V	50Hz / 60Hz	10/2000 Lux	2000W - Incandescent 2000W - AC Halogen 1000W - Fluorescent 600W - LED	30s - 30min	White

### DETAIL:

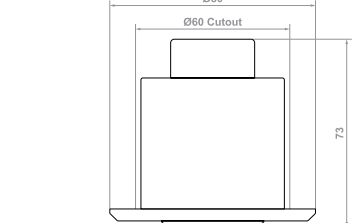


### DETECTION AREA:



7m Diameter

### DIMENSIONS:



[Return to Contents Page](#)