

RUBICON
LIGHTING

HEXO





Features:

- Efficacy Of Up To 119lm/W*
- Power Factor > 0.98
- Optional Built-In Motion Sensor (On Request)
- Emergency Backup Option Available (On Request)
- Minimum Lumen Maintenance: 50 000h (L80B10)



Power Supply:	220-240V AC 50 - 60Hz				
Operating Temperature Range: (Ta - Ambient)	- 20°C to 35°C				
Dimming:	Dali_1-10V (On Request)				
Colour Rendering Index:	CRI 80+ _ CRI 90+				
Colour Consistency:	3-Step MacAdam				
Colour Temperature: (Kelvin / CCT)	<input type="radio"/> 3000K <input type="radio"/> 4000K				
Beam Angle:	95° x 120°				
Installation Type:	• Surface Mounted • Suspension Mounted				
Ingress Protection:	IP20				
Luminaire Colour:	<input type="radio"/> White <input checked="" type="radio"/> Black <input type="radio"/> Custom Colours Available On Request				
	Housing - Powder Coated Extruded Aluminium				
	Dimensions	Wattage (System)	CRI	Kelvin	Luminous Flux (Effective)
	900mm x 125mm x 57mm	42W	80+	4000K	4872Lm*
	900mm x 125mm x 57mm	60W	80+	4000K	6597Lm*
	1200mm x 125mm x 57mm	42W	80+	4000K	4937Lm*
	1200mm x 125mm x 57mm	59W	80+	4000K	6721Lm*

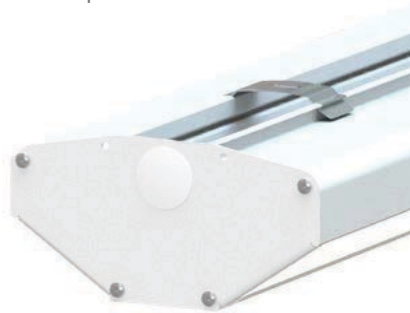
*E & O.E (Errors And Omissions Excepted)

*Due to the rapid development in LED technology the performance values, power consumption and lumen output levels stated above are subject to change without prior notice.

*All lumen outputs stated above are based a nominal output that included a 10% light loss, this can vary depending on the optic used.

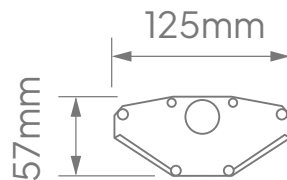
Mounting Options:

- SPR - Spring Clip Mount
- BD - Bolt Down
- SUSP - Suspension Kit

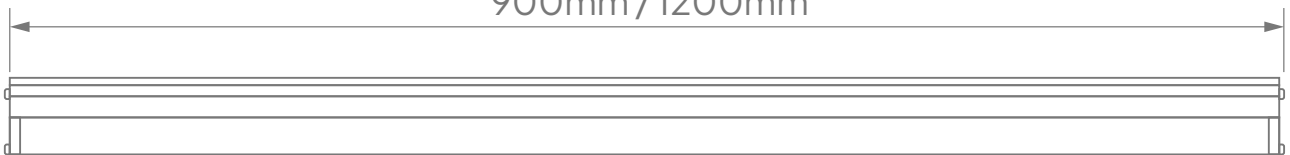


Spring Clip Mount

Dimensions:



900mm / 1200mm



*E & O.E (Errors And Omissions Excepted)

*Due to the rapid development in LED technology the performance values, power consumption and lumen output levels stated above are subject to change without prior notice.

*All lumen outputs stated above are based a nominal output that included a 10% light loss, this can vary depending on the optic used.

Contact

Cape Town

1B Hansen Close,
Richmond Park,
Cape Town
T. +27 21 555 0570

Durban

Unit L, Nandi Park,
34 Brickworks Way
Briardene
T. +27 31 001 2964

Namibia – Windhoek

Unit 2, Tesoro Building,
31 TV More Street
Windhoek
T. +264 61 40 0339

Johannesburg

17 Galaxy Road,
Unit 5A Galaxy Park,
Linbro Park
T. +27 11 262 5179

Port Elizabeth

216 Main Road,
Walmer
Port Elizabeth
T. +27 41 451 4359