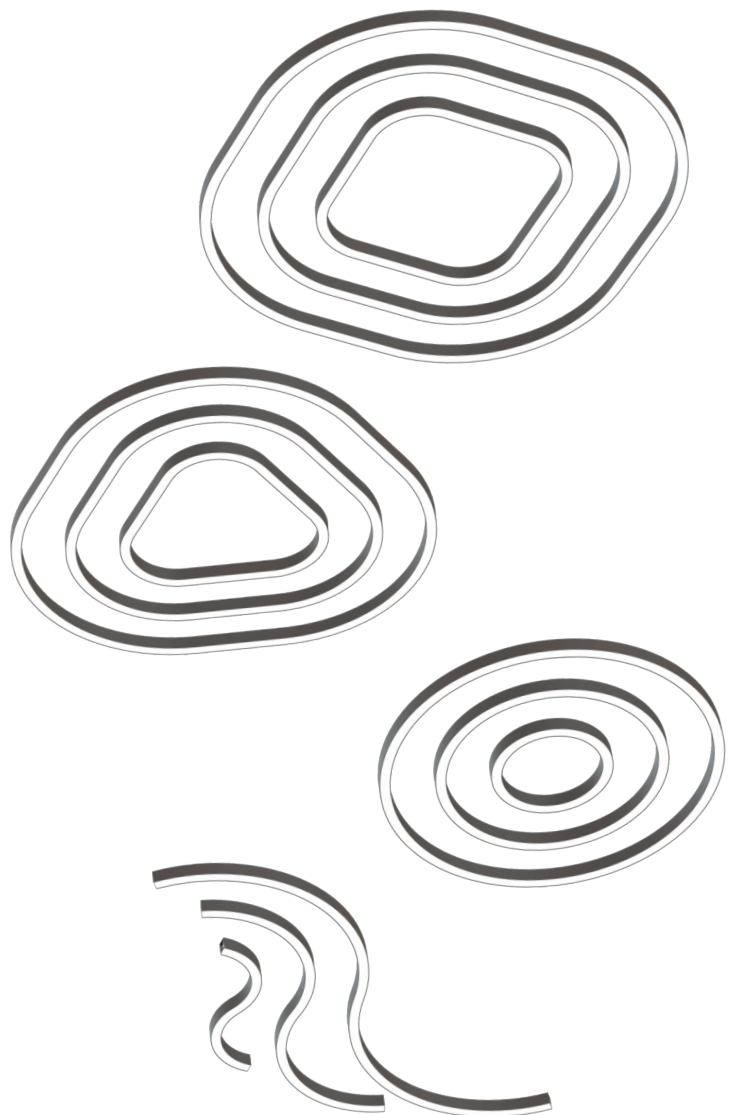
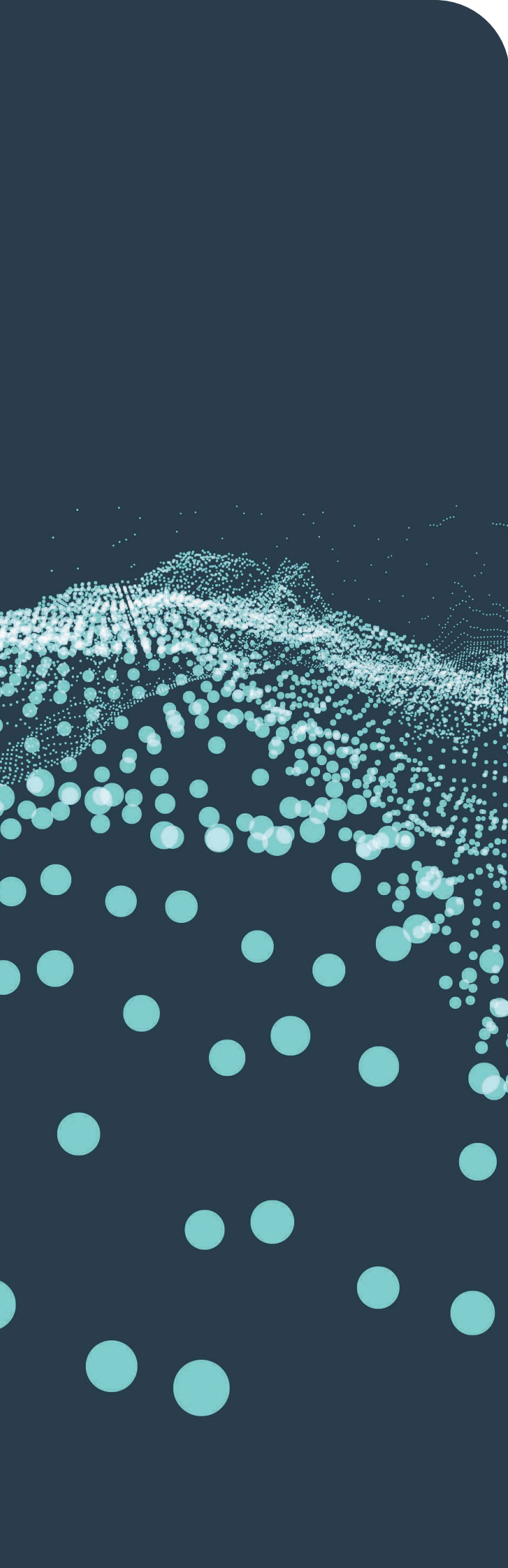


RUBICON
LIGHTING

Curved
Linear System





Features:

- High Output LED Modules
- THD At Full Power: < 10%
- ≥ 0.98 Power Factor (Typical)
- Dali Dimming Control Option Available (On Request)
- Minimum Lumen Maintenance: 50 000h

Typical Applications:

- Indoor Architectural Lighting
- Boardrooms
- Open Plan Offices
- Open Plan Cafeteria's
- Continues Runs
- Retail – Accent Or POS Lighting

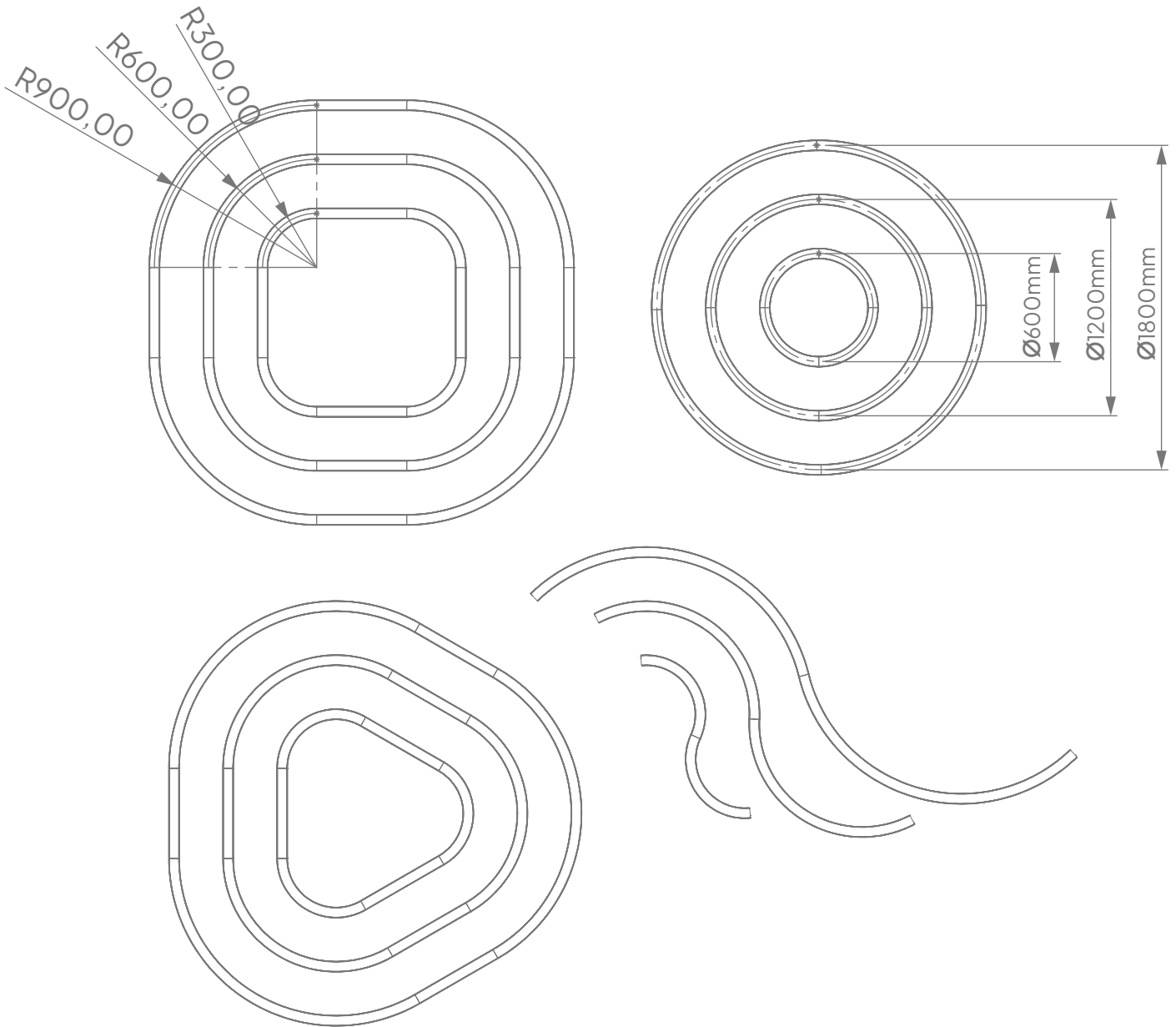
Power Supply:	110 - 220V AC 50 - 60Hz
Operating Temperature Range: (Ta - Ambient)	- 20°C to 35°C
LED - Modules:	CRI 80+
Dimming:	Dali (On Request)
Colour Temperature: (Kelvin / CCT)	<input checked="" type="radio"/> 4000K <input type="radio"/> 5000K
Beam Angle:	110 °
Installation Type:	Suspended - Wire Rope With Height Adjustability
Ingress Protection:	IP40
Luminaire Colour:	<input type="radio"/> White <input type="radio"/> Silver <input checked="" type="radio"/> Black <input type="radio"/> Other Colours On Request
Material:	Diffuser - Opalized extruded PMMA Housing - High quality extruded aluminium finished in durable powder coated paint Gear Tray - High quality extruded aluminium
Light Output (Nominal):	<ul style="list-style-type: none"> • 2400lm/m* @ 20W/m • 3900lm/m* @ 40W/m

*E & O.E (Errors And Omissions Excepted)

*Due to the rapid development in LED technology the performance values, power consumption and lumen output levels stated above are subject to change without prior notice.

*All lumen outputs stated above are based a nominal output that included a 10% light loss, this can vary depending on the optic used.

Key Dimensions & Profile Illustrations:



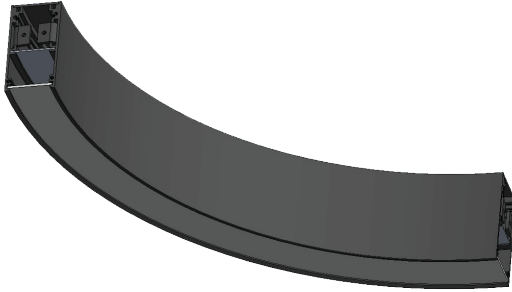
*E & O.E (Errors And Omissions Excepted)

*Due to the rapid development in LED technology the performance values, power consumption and lumen output levels stated above are subject to change without prior notice.

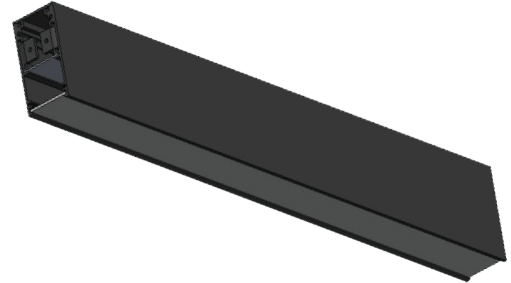
*All lumen outputs stated above are based a nominal output that included a 10% light loss, this can vary depending on the optic used.

Standard Section Sizing And Options

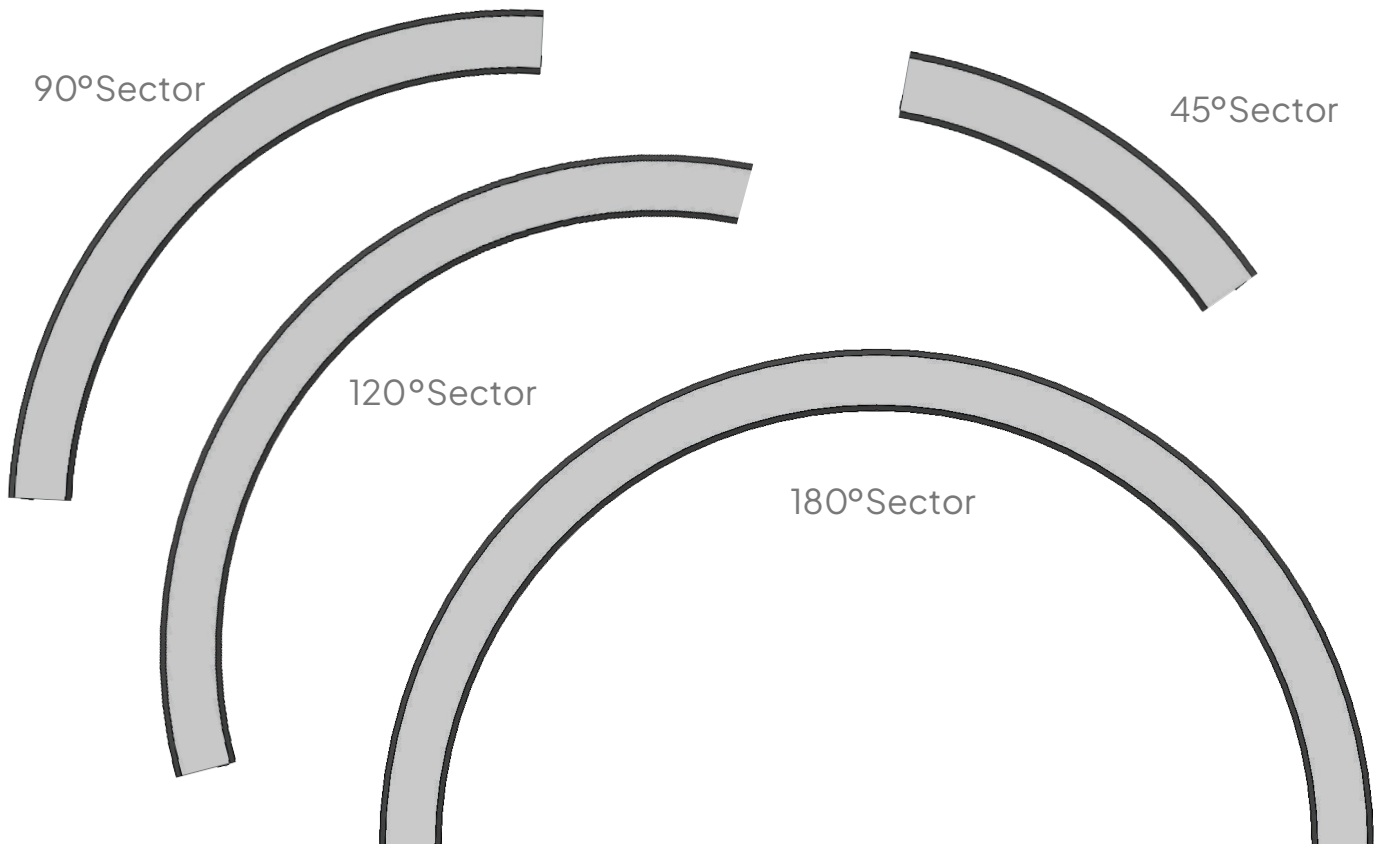
Horizontal Curves



Straight Sections



Profile Sizing (Height x Width)	Radius Curves (Centre Radius)	360° Sectors	Straight Lengths
<ul style="list-style-type: none"> • 80mm x 40mm • 80mm x 60mm • 80mm x 80mm 	<ul style="list-style-type: none"> • 300mm • 600mm • 900mm 	<ul style="list-style-type: none"> • 45° • 90° • 120° • 180° 	<ul style="list-style-type: none"> • 500mm • 1000mm • 1500mm • 2000mm



*E & O.E (Errors And Omissions Excepted)

*Due to the rapid development in LED technology the performance values, power consumption and lumen output levels stated above are subject to change without prior notice.

*All lumen outputs stated above are based a nominal output that included a 10% light loss, this can vary depending on the optic used.

Contact

Cape Town

1B Hansen Close,
Richmond Park,
Cape Town
T. +27 21 555 0570

Durban

Unit L, Nandi Park,
34 Brickworks Way
Briardene
T. +27 31 001 2964

Namibia – Windhoek

Unit 2, Tesoro Building,
31 TV More Street
Windhoek
T. +264 61 40 0339

Johannesburg

17 Galaxy Road,
Unit 5A Galaxy Park,
Linbro Park
T. +27 11 262 5179

Port Elizabeth

216 Main Road,
Walmer
Port Elizabeth
T. +27 41 451 4359