



Switches and systems





Welcome

As varied as apartments, offices, houses and commercial buildings may appear at first sight - careful inspection shows that they are each home to a mosaic. They are basically nothing less than the total of large and small furnishing elements, which are compiled into an expressive, quite personal whole, just like the stones of a mosaic.

One of these decisive details is the switch programme, because it appears throughout the building and creates connections between the individual rooms and style elements. The same applies to the building technology. It ensures that you can set up and control your home or office just as you really want it to be. In our overview, besides many classic products, you will therefore find a range of completely new colours, material combinations, function elements and switch programmes, from which you can create a very specific, unmistakable mosaic: your own.

Original-Locations:

Studio Aisslinger, Berlin
Architekt: Werner Aisslinger
Fotograf: Mark Seelen, Hamburg

Cologne Oval Offices, Köln
Architekten: Sauerbruch Hutton Architekten
Fotograf: Werner Huthmacher, Berlin

Zentrum für Virtuelles Engineering, Stuttgart
Architekt: Ben van Berkel
Fotograf: Mark Seelen, Hamburg

Herzogin Anna Amalia Bibliothek, Weimar
Architekt: Walter Grunwald
Fotograf: Werner Huthmacher, Berlin

Privathaus, Neuenrade
Architekt: Rüdiger Wilde
Fotograf: Werner Huthmacher, Berlin

Soho House, Berlin
Architekt: Michaelis Boyd Associates, London
Fotograf: Mark Seelen, Hamburg

Vigilius Mountain Resort, Lana/Südtirol / Italien
Architekt: Matteo Thun
Fotograf: Mark Seelen, Hamburg

Privathaus Herdecke
Architekten: Gegus und Hellenkemper
Fotograf: Mark Seelen, Hamburg

Meisterhäuser, Dessau
Architekten: Bauhaus
Fotograf: Werner Huthmacher, Berlin

Villa, München
Architektur und Design: Christoph Madaus
Fotograf: Florian Holzherr

Privathaus, Köln
Fotograf: Mirjam Fruscella



Content

Berker R.1	Page	06 07
Berker R.3	Page	08 09
Berker K.5	Page	10 11
Berker K.1	Page	12 13
Berker B.3	Page	14 15
Berker B.7	Page	16 17
Berker Q.1	Page	18 19
Berker Q.3	Page	20 21
Berker Arsys	Page	22 23
Berker S.1	Page	24 25
Berker Serie R.classic	Page	26 27
Berker Serie Glas	Page	28 29
Berker Serie 1930 Porzellan made by Rosenthal	Page	30 31
Berker Serie 1930	Page	32 33
Berker B.IQ	Page	34 35
New range of colours and materials	Page	36 37
Berker TS	Page	38 39
Berker TS Crystal Ball, Berker TS Crystal	Page	40 41
Berker TS Sensor	Page	42 43
Berker New range of colours and materials	Page	44 45
Berker KNX-Touch Sensor R.1/R.3	Page	46 47
Berker Mounting heights	Page	48 49
Berker Splash-protected ranges	Page	50 51
Berker House Electronics	Page	54 65
Berker Radio bus system	Page	66 67
Berker Awards	Page	68 69
Berker References	Page	70 71



Berker R.1

An all-round success

It stands unmistakably in the tradition of great switch programmes. And still, the Berker R.1 interprets the radius anew in its completely own way. With its soft frame contour and a variety of functional versions, the soft round switch is an ideal accompaniment for all residential and furnishing projects.



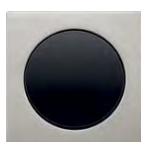
Available in stainless steel, aluminium, glass polar white, glass black, plastic polar white, plastic black.



Berker R.3

Clear contrast

With its continuously angular frame and round centre plates, the Berker R.3 is a celebration of the power of contrast. Just like the Berker R.1, its product range comprises all the properties of a contemporary surface switch. And, just like this, its stable plastic base makes it both robust and break-proof.



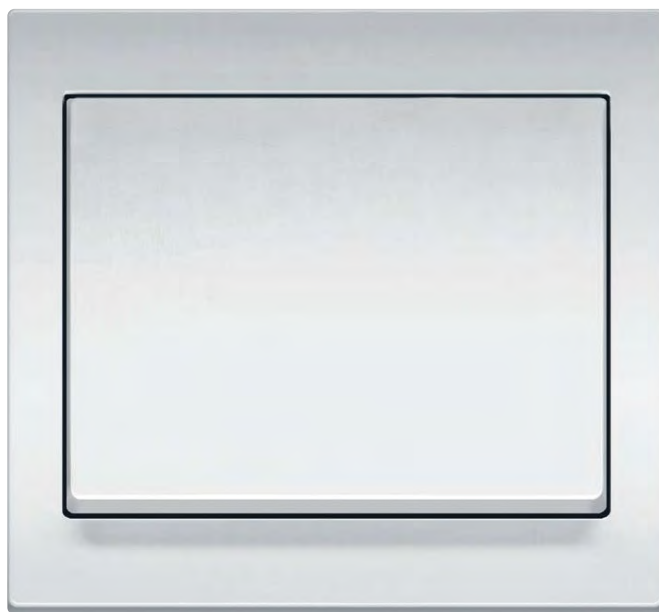
Available in stainless steel, aluminium, glass polar white, glass black, plastic polar white, plastic black.



Berker K.5

Cool classic

Clear contours. Consistent design. A cultivated exterior – the Berker K.5 is recommended for anyone who values fine forms and the highest quality materials in equal measure. An attractive example is the latest variant of the Berker K.5 in cool, clear aluminium.



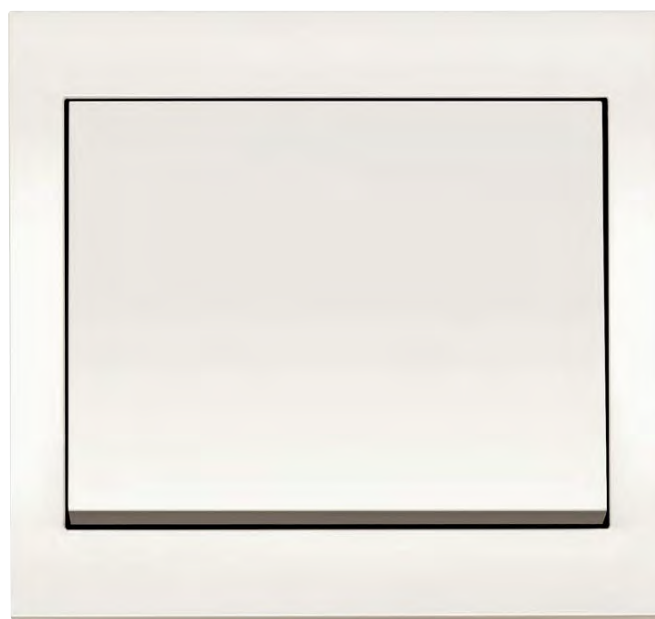
Available in stainless steel and aluminium (to E6EV1).



Berker K.1

Simply perfect

No other switch is more contoured, shaped or more cultivated. Thus the Berker K.1 is the logical choice for any classic interior - and an investment which will pay dividends for years. And, with its IP44 equipment, even the moisture of bathrooms, cellars or outside rooms has no effect.



Available in plastic polar white glossy and plastic anthracite matt.



Berker B.3

A perfect combination

Colours enrich life, and, with B.3, these are essentially built-in. A highly individual combination can be created from a range of colour variants for frames and rockers. An absolute innovation are the B.3 frames, made of black, brown or red anodised aluminium.



Available in aluminium, black anodised aluminium, brown anodised aluminium, gold anodised aluminium and red anodised aluminium. All the aluminium frames are available with a polar white or anthracite intermediate ring.



Berker B.7

Timeless clarity

Gives every switch the right frame: In addition to glass frame varieties, the Berker B.7 is now also available in various plastic, stainless steel and aluminium. In these materials, it can be perfectly combined with Berker TS Sensor and Berker B.IQ.



Available in glass/polar white matt, glass aluminium, as well as glass black, plastic polar white, plastic anthracite, plastic alu. B.7 frames can be combined with all B.-series centre plates.



Berker Q.1

A difference you can feel

You notice the difference the first time you touch it: thanks to its innovative surface, this likable all-rounder has an unmistakable velvety feel – and in elegant anthracite now in an additional attractive colour variant. With its smooth profile, flat switching angle and soft, rounded edges, it is very pleasant to look at.



Available in plastic polar white velvety and plastic anthracite velvety.



Berker Q.3

Robust companion

Robust. Hardly any term describes the Berker Q.3 better. On one hand, there is its clear contour, on another its friendly surface. It is equipped with the same centre plates as its sister programme Berker Q.1. Its functional benefits are also noteworthy: the Berker Q.3 is ideally suited to installations in wall ducts.



Available in plastic polar white velvety and plastic anthracite velvety.



Berker Arsys

Versatile aesthetics

No two properties are the same. Every interior is different. And therefore the switch concept must be unique as well. Available in a wide selection of materials and surfaces, Berker Arsys range fits well into almost any ambience. But it always remains true to itself.



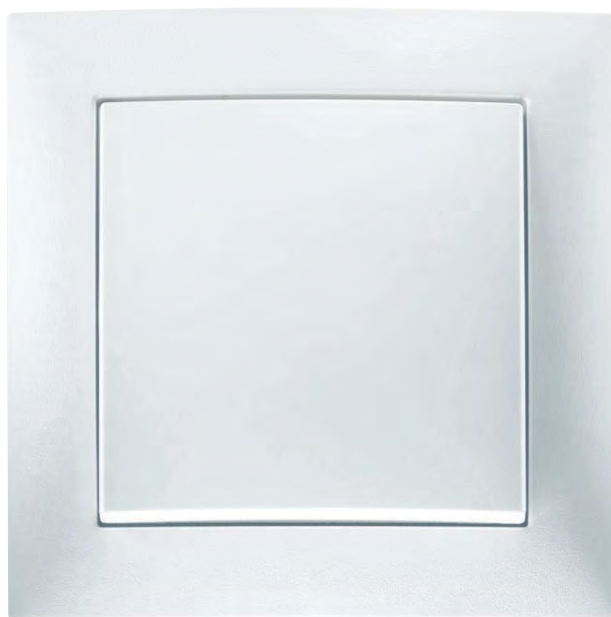
Available in stainless steel, plastic polar white, plastic white, plastic brown, metal gold, metal light bronze.



Berker S.1

Stylish standard

Berker S.1 stands for “standard”, and this even in two ways – standard because this switch range has set real standards for simplicity, functionality and timelessness. And standard because, thanks to these qualities, it has naturally developed to become a standard choice for both office and residential buildings.



Available in plastic polar white matt, plastic polar white glossy and plastic white glossy.



Berker Serie R.classic

Contemporary classic

Can a switch awaken feelings? Scarcely any other switch has answered this question as emotionally as the Berker R.classic series. With its attractive round shape, four high-quality material variants and sleekly elegant rotary knob, it ensures a great feeling: enthusiasm.



Available in stainless steel, aluminium, glass, plastic polar white, plastic black.



Berker Serie Glas

Inspiration Bauhaus

Simplicity. A beautiful form instead of just a beautiful appearance.
Design elegance resulting from the function: The Bauhaus-inspired Berker Glass series contains the best of all of these qualities.



Available in clear glass each with rotary toggles in polar white, black or chrome.



Berker Serie 1930

Porzellan made by Rosenthal

Fine porcelain

Together with the porcelain manufacturer Rosenthal, we have returned to the original material for high-quality switches. The Berker Serie 1930 edition, made with real Rosenthal porcelain, is a homage to craftsmanship, perfect shape and a fine material.



Available in polar white and black Rosenthal porcelain, produced in the factory "Rosenthal am Rotbühl".



Berker Serie 1930

Pure functionality

Berker and Bauhaus are not only the same age (both were founded in 1919), but they also share the same passion for pure shapes and functionality. Even today, clients and planners love both qualities. And, because of this, the unique, Bauhaus-inspired Berker Serie 1930 can be found not only in timeless, classic buildings, but also in trendy properties, such as the “Casa Camper” in Berlin.



Available in plastic polar white or plastic black.



Berker B.IQ

Creative all-rounder

To the convenient KNX functions of the Berker B.IQ is now added a wide array of alternative materials. For example, the surface variants and colours in black glass and aluminium are completely new. They correspond exactly to the surfaces of the Berker B.7, which, with its switches and socket outlets, is an ideal partner for the Berker B.IQ.



Available in brushed stainless steel, aluminium, glass polar white, glass black, plastic polar white.

New range of colours and materials

Two things that complement each other perfectly: Berker B.IQ in plastic, glass or aluminium with Berker B.7 socket outlets with a matching appearance.

plastic polar white



+



plastic polar white

glass polar white



+



glass polar white

glass black

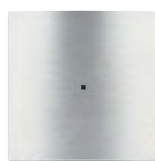


+



glass black

aluminium



+



aluminium

stainless steel



+



stainless steel





Available in clear glass.



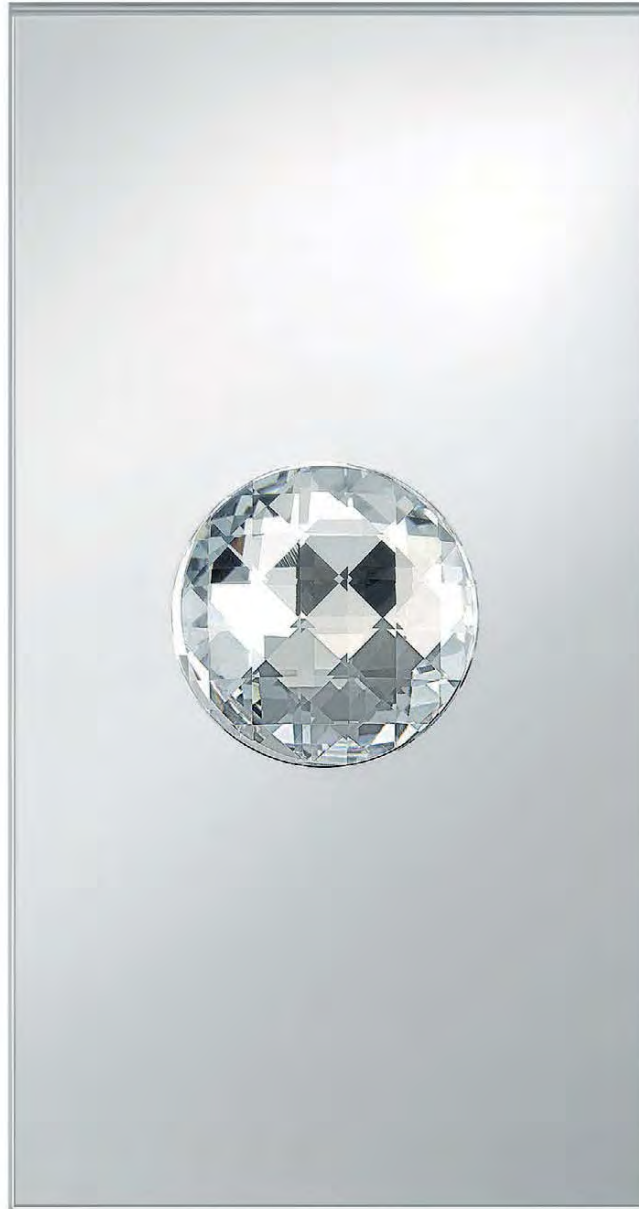
Berker TS

A noble gesture

Behind its elegant-purist appearance an unimaginable wealth of technical possibilities are concealed. It can be used to operate not just several light sources, but also, if desired, intelligent building control systems such as the Berker KNX or Berker radio bus system.



Available in clear glass.
Push-button made from
CRYSTALLIZED™ – Swarovski Elements.



Berker Crystal Ball and Berker TS Crystal A real eye-catcher

So many facets to one switch: with their elegant platform and push-buttons made with CRYSTALLIZED™-Swarovski Elements the "Berker TS Crystal Ball" and "Berker TS Crystal" lend refinement to any sophisticated ambience.



Available in a basic version and as a customised version with individual labelling – see www.berker.com/ts-sensor
 glass black, glass aluminium, glass polar white.



Berker TS Sensor

Intelligent understatement

Understatement is an art, and the Berker TS Sensor makes it perfect. Up to eight functions are concealed under a pure surface that is practically flush with the wall, and can be custom-labelled on request. A single touch is all it takes to control lights, heating or blinds. Thus the Berker TS Sensor can offer an exciting range of options – yet still remains as calm as possible.

New range of colours and materials

The greater the variety of materials, colours and switch programmes, the greater the range of choice. With perfectly matched surfaces, we have ensured that our products can be combined with one another. A particularly attractive example: the combination of the Berker TS Sensor with the socket outlets of the Berker B.7 switch programme.

glass polar white



glass black



glass aluminium



glass polar white

glass black

glass aluminium





Available in glass black,
glass polar white.



KNX-Touch Sensor R.1/R.3

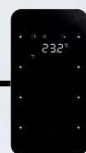
Intelligent understatement

Just right for the switch programmes in the R.-Design is the Berker Touch Sensor – in a soft (R.1) and cornered (R.3) contour as well as in the glass surfaces black and polar white. The KNX-Touch Sensor has the same assembly height as the switches in the R.-Design. With its integrated bus coupling unit, a variety of building functions can be read and controlled through it.

Perfect location

We have all got so used to it, that we don't think about it anymore. And yet the "Where" and "How" of switch installation follows a clearly thought-out concept. Switches and socket outlets are always installed in such a way as to meet human requirements: information and control panels at eye level, switches close at hand and socket outlets on the floor, where plugs and cables impede us the least. This ensures not only maximum operating comfort, but also a standardised appearance throughout the building.





Information
150 cm



Action
110 cm



Power
30 cm



Berker Splash-protected

Stylish standard

Wetness and damp are no hindrance to beauty. Our flush-mounted ranges Q.1, Q.3, R.1, R.3, K.1, K.5 and Arsys stainless steel are also available with splash protection. As for surface-mounted switches, our Aquatec range and our extremely robust, waterproof ISO-Panzer devices mean you are home and dry.



Q.1



Q.3



R.1



R.1



K.1



K.5



Aquatec



Iso-Panzer

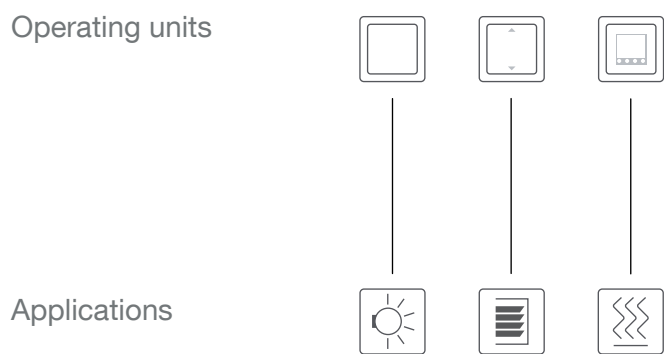
A house is never merely a house.

It gives us warmth, protection and a feeling of security.

It is the stage on which our lives are played out. It is also the place where we spend the greater part of our days and nights. In order for a house to become a real home, however, it must be unique and comfortable, efficient and uncomplicated. This explains why more and more building owners are opting for Berker's simple yet intelligent building service ranges.



01 Berker house electronics



02 Berker radio systems



No two houses are the same. For that reason, we offer a variety of systems for use in different buildings, and to meet different needs. For example Berker House Electronics, which features numerous components for use in conventional installations.



Berker Control surface-mounted controller, Berker Q.1 socket outlet, dimmer, timer with display, main picture: Berker Q.1 flush-mounted controller



01 Berker house electronics

Light control

The more your house looks after you, the less things you have to keep in mind. A motion detector ensures that your path is always lit automatically when you come home. It can switch the light in the stairwell, corridor or toilet on automatically when you need it. Thanks to its precise detection, it guarantees perfect monitoring of any area of the house, thus scaring off uninvited guests. Berker detectors can fulfil all your comfort and security requirements and also help to save energy. This is because they only switch the lighting on automatically, when they detect movement within their defined detection field.



Berker Q.1 timer with display,
main picture: Berker Q.1 rotary
switch for shutters.



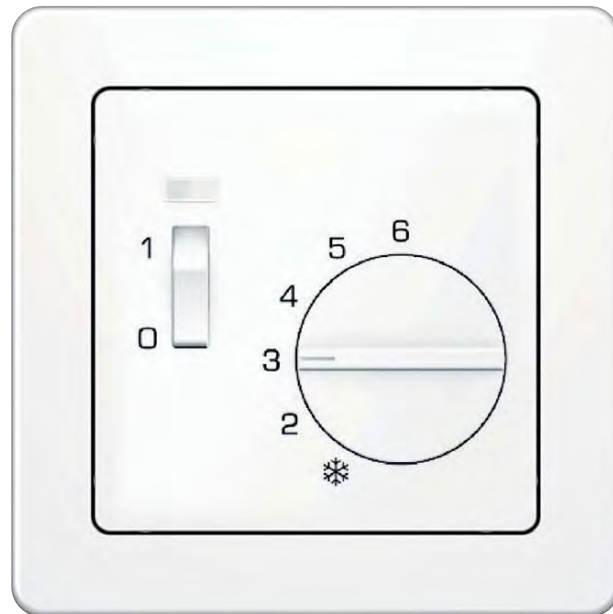
01 Berker house electronics

Blind control

A twist is all it takes to darken or brighten a room, open its blinds, or secure it against glances and intrusion from those outside. In combination with timers or sensors all this happens even automatically at your desired time or in case of strong winds. In this way a Berker blind control provides not only controlled incidence of sunlight and temperature, but it also noticeably increases safety and security.



Berker Q.1 room thermostat.



01 Berker house electronics

Room temperature control

People need warmth – but when? Where exactly? And how much? Berker room thermostats allow you to set the exact required temperature in any room and to control it automatically, when the room is no longer used.



Berker Q.1 USB charging socket.



01 Berker house electronics

Berker USB charging socket

Mobile phones and smartphones, digital cameras and games consoles are now a fixed part of everyday life. In the same way, a Berker USB charging socket is a part of any home. They can be used to recharge the batteries of many mobile terminals with USB connections simply.



Multiple networking with the Berker multimedia socket outlet



01 Berker house electronics

Berker multimedia socket outlets

Whatever new opportunities communication and entertainment technologies create - the Berker multimedia socket outlets allow perfect integration of all of them. They offer the best possible connection for laptops, beamers, PC monitors, mobile end devices and hi-fi systems, as well as for all the latest electronic entertainment devices.

They are easy to install, available for all Berker switch ranges and are thus the best way to bring entertainment into your home.



Top reception with Berker Radio Touch



Suitable for iPhones of up to Version 4S

01 Berker house electronics

Berker Radio Touch

Let your favourite radio station wake you up. Listen to the news headlines in the bathroom. Check the situation on the roads during breakfast. And relax with music at the end of the day... All this can be done by the Berker "Radio Touch".

It can be installed in any mounting box and easily controlled with its touch screen. Due to the polar white or stainless steel coloured surface it integrates perfectly into all Berker switch programmes. With the optional docking station (equipped with its own amplifier and with it usable independently to the radio) and the second speaker it advances to a veritable stereo system - in your bedroom, kitchen, bathroom, office or wherever you appreciate the great convenience of this small piece.



Radio hand-held transmitter
comfort, Berker R.3 BLC radio
button.
main picture:
Q.1 4gang push-button

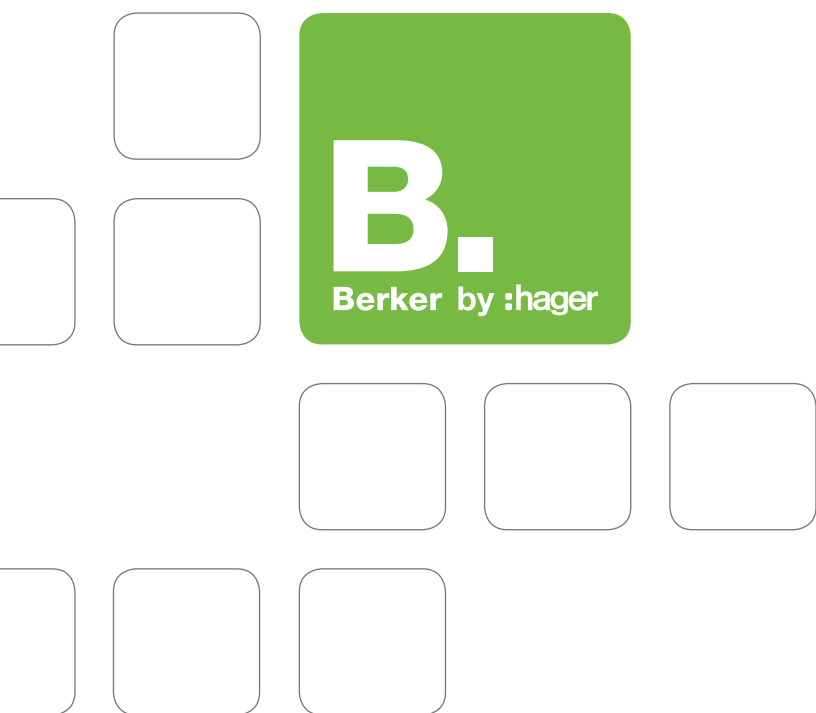


02 Berker radio systems

Anyone wanting to renovate their property and make it more comfortable does not necessarily need to get to grips with a drill and crowbar. The switches and devices of the Berker radio bus system work with battery-driven radio transmitters and are simply mounted on the wall surface, without any major installation work. They can be used to control blinds, light, time and central functions throughout the whole house, and from any location in the house. Really neat!

Berker Awards

When considering switches and controllers, Berker switches are amongst the best and most beautiful things which you could wish for your home. This is not only confirmed by many of our customers, but also by the technical juries of national and international awards, which we have won time and again.





Berker R.1



Berker R.1, R.3, Serie R.classic



Berker Q.1, B.IQ, K.5, TS Sensor, serie 1930 Porzellan made by Rosenthal, TS Crystal Ball, Radio Touch



product
design
award

Berker R.1, R.3, Serie R.classic, R.1/R.3 KNX-Touch Sensor, TS Sensor, Radio Touch, B.3, B.IQ, S.1



design
award
china

Berker K.1, TS Sensor



Berker R.1, R.3, Serie R.classic, R.1/R.3 KNX-Touch Sensor, B.IQ, KNX Tastsensoren, K.1, K.5, S.1, TS Sensor, Serie 1930 Porzellan made by Rosenthal



reddot award

Berker Q.1, B.IQ, TS, TS Sensor

DESIGN PLUS

Berker Q.1, K.5, Serie 1930 Porzellan made by Rosenthal, TS Crystal Ball



Berker B.IQ, Arsys Kupfer Med, K.5 Aluminium



Berker TS Sensor

References

The courage to try out new ideas in architecture; the knowledge that good design is always the sum of many good ideas; an appreciation of superb quality down to the smallest details. Evidence of all these things can be found today in houses everywhere from Munich, Berlin and Hamburg to Bolzano, Madrid and Seoul. And it is no coincidence that Berker switches and systems can also be found in all of these places.

Europe

Hotel Sacher, Vienna
Hotel Lux Alpinae, St. Anton am Arlberg
Hotel Schloss Elmau, Elmau
Vigilius Mountain Resort, Lana
Hotel Puerta l'America, Madrid
Lloyd Hotel, Amsterdam
Zentrum für Virtuelles Engineering, Stuttgart
Herzogin Anna Amalia Bibliothek, Weimar
minimum bulthaup, Berlin
Privathaus, Berlin

Singapore

The Fullerton Hotel
Shangri-La Hotel – Valley Wing
Sentosa – The Beaufort
Four Seasons Hotel
Grand Hyatt Hotel
Grand Copthorne Waterfront Hotel

Malaysia

Genting Hotel, Genting
JW Marriott Hotel, Kuala Lumpur

China

Island Shangri-La, Hong Kong
Le Royal Méridien Hotel, Shanghai
The Ritz-Carlton, Shenzhen
InterContinental, Shenzhen
Swissôtel Grand Shanghai, Shanghai
Swissôtel, Foshan
Thousand-Islands-Lake Golden Horizon
Hotel & Resort, Hangzhou
Guo Guang Garden Hotel & Resort, Hainan

Other Countries

The Ritz-Carlton, Bali Resort & Spa,
Bali
Makati Shangri-La Hotel, Manila
Sedona Hotel, Mandalay
Four Seasons Hotel, Seychelles





See you!





CONTACT DETAILS:

HEAD OFFICE -CAPE TOWN
100 Upper Canterbury Street
Cape Town
Tel: +27 21 464 4661

JOHANNESBURG
Unit 5a Galaxy Park, Galaxy Road,
Linbro Park
Tel: +27 11 262 5179

Branch Manager – Kevin Murphy

PRETORIA
Unit 11, Lenchen Park
Lenchen Road South
Centurion
Tel: +27 12 663 5921 / 9904

Contact Person – Trevor Maybery

NAMIBIA – WINDHOEK
Unit 2, Tesoro Building
31 TV More Street
Windhoek
Tel: +264 61 40 0339

Branch Manager – Philipp Ludescher