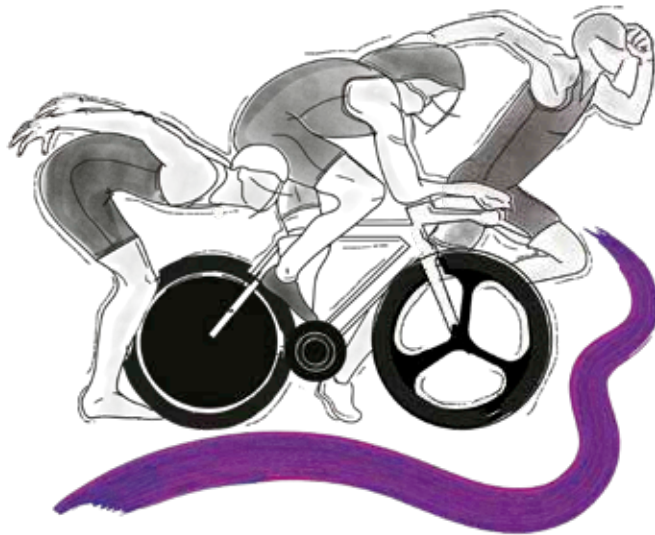
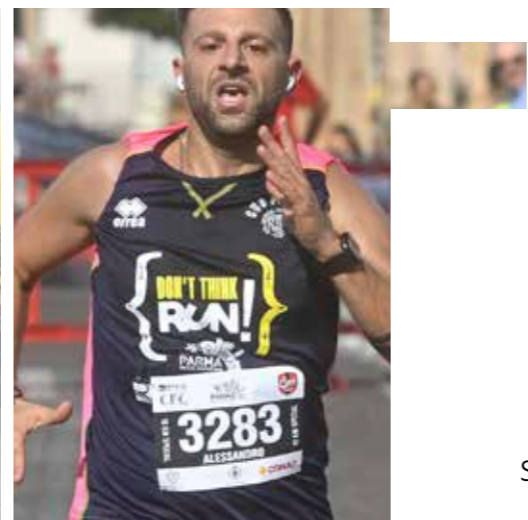
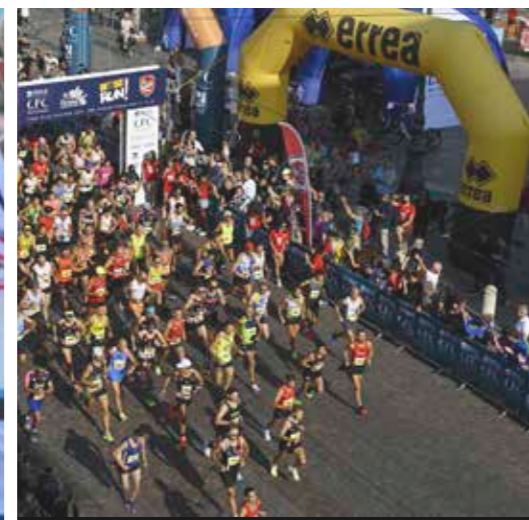
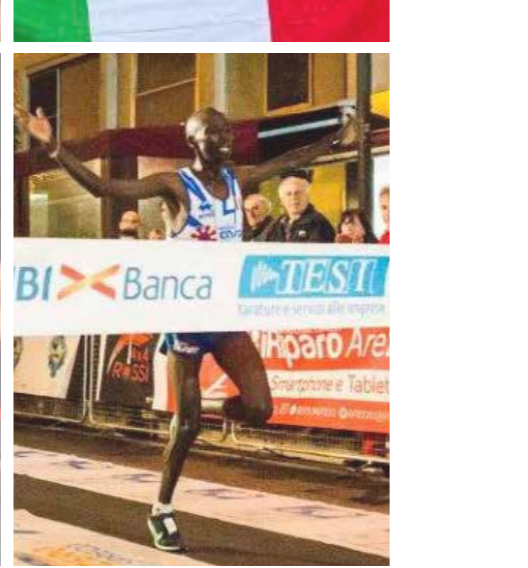




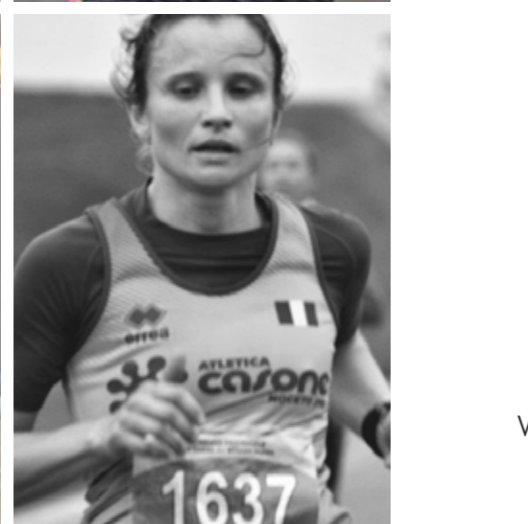
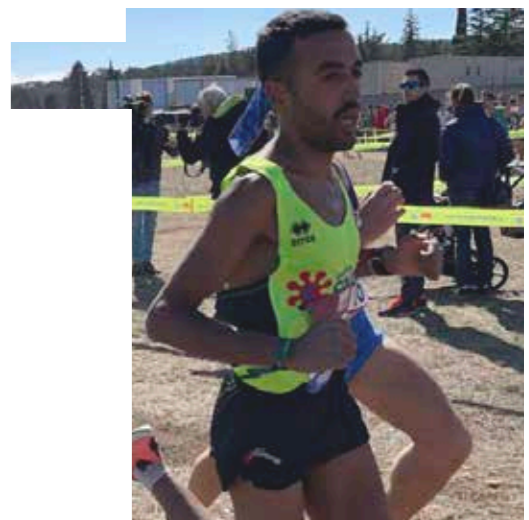
TRIATHLON  
2023  
COLLECTION  
COLLECTION





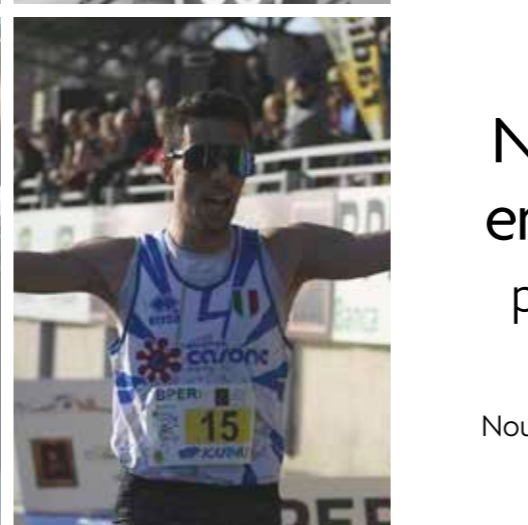
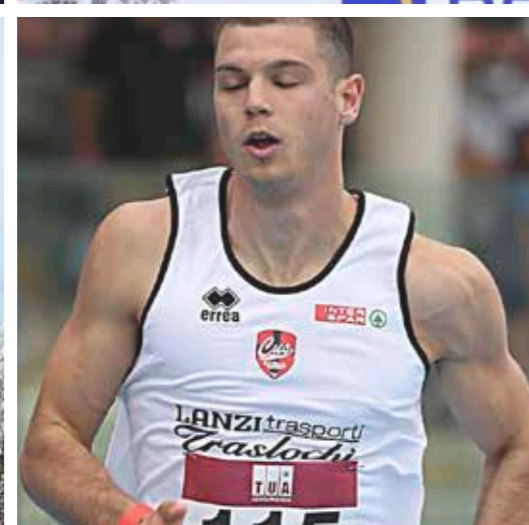
Vestiamo lo sport  
da produttore,  
con una cultura Sartoriale.

Seguiamo ogni cliente con la stessa cura e  
professionalità



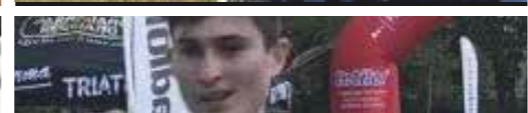
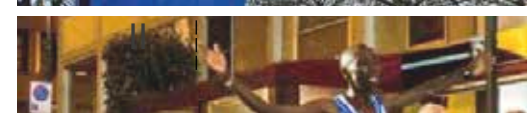
Dressing sport as a  
manufacturer  
with a tailoring culture.

We dedicate the same care and professional  
approach to every customer



Nous habillons le sport  
en tant que producteur  
possédant une grande culture  
de la couture

Nous suivons chaque client avec le même soin et le  
même professionnalisme



Dal 1988 produciamo capi sportivi e tecnici in grado di migliorare le performances di chi vive e ama lo sport, assicurando i massimi standard di qualità, sicurezza e comfort. Il servizio e la cura del cliente sono la nostra priorità: la nostra principale e grande responsabilità è la soddisfazione e l'attenzione verso il consumatore.

Ci distinguiamo dai principali competitors perché siamo la prima azienda in Europa nel settore teamwear ad avere ottenuto la certificazione Oeko-Tex Standard 100, un ulteriore attestato che ci rende orgogliosi del lavoro svolto quotidianamente. Nella sede di San Polo di Torrile gestiamo l'intera filiera produttiva e lo sviluppo di tutte le fasi di lavorazione del prodotto, dalla selezione delle materie prime alla progettazione dell'aspetto grafico, dalla produzione dei prototipi fino alla consegna del capo finito.

Scegliamo di essere produttori perché ci permette di garantire la massima sicurezza grazie a meticolosi controlli interni. L'efficace gestione aziendale si impegna ogni giorno a monitorare e migliorare l'organizzazione e il controllo, ottimizzare i processi, ridurre le inefficienze, contribuendo così alla qualità dei prodotti e servizi. Grazie al prezioso lavoro quotidiano, abbiamo ottenuto la certificazione ISO 9001:2015.

Oggi siamo presenti in 80 paesi, in costante ricerca di nuovi mercati e nuove sfide.



Depuis 1988, nous produisons des articles sportifs et techniques en mesure d'améliorer les performances de ceux qui vivent et aiment le sport, en assurant les plus hauts standards de qualité, de sécurité et de confort. Le service et le soin du client sont notre priorité : notre grande et principale responsabilité est la satisfaction et l'attention envers le consommateur.

Nous nous distinguons par rapport à nos principaux concurrents car nous sommes la première entreprise en Europe dans le secteur du teamwear à avoir obtenu la certification Oeko-Tex Standard 100, une attestation supplémentaire qui nous rend fiers du travail réalisé quotidiennement. La gestion de l'ensemble de la filière de production ainsi que le développement de toutes les étapes de réalisation du produit, sélection des matières premières, projet graphique, production des prototypes et livraison des vêtements finis - ont lieu au siège de San Polo di Torrile. Nous choisissons d'être producteurs car cela nous permet de garantir la sécurité maximale grâce à des contrôles méticuleux que nous réalisons en interne. Grâce à une gestion efficace, l'entreprise s'engage chaque jour à suivre et à améliorer l'organisation et le contrôle, à optimiser les processus, à réduire les inefficacités, contribuant ainsi à la qualité des produits et des services. Grâce au précieux travail quotidien, nous avons obtenu la certification ISO 9001:2015.

Nous sommes aujourd'hui présents dans 80 pays, à la recherche permanente de nouveaux marchés et de nouveaux défis.



Since 1988, we've been producing sports and technical clothing able to boost the performance of those who love practising and experiencing sport, guaranteeing top standards of quality, safety and comfort. Customer service and care are our priority: our primary responsibility is to attend to and meet our customers' needs.

What sets us apart from our main competitors is that we are the first company in the teamwear sector in Europe to have obtained Oeko-Tex Standard 100 certification, a further demonstration of why we can be proud of the work we do every day.

The entire production chain is managed at its headquarters in San Polo di Torrile, along with the development of all the manufacturing stages: from the selection of raw materials to the design of the graphics, from prototype production right up to the shipment of the finished garments.

We have chosen to produce our own items because it allows us to guarantee maximum safety, thanks to the meticulous checks we carry out in-house.

Every day, our efficient corporate management strives to monitor and improve organisation and control, optimise processes and reduce inefficiencies, thus boosting the quality of our products and services. This sterling effort we make every day has earned us ISO 9001:2015 certification.

Today we are present in 80 countries and constantly on the lookout for new markets and challenges.

## La nostra storia e i nostri obiettivi racchiusi in queste pagine.

Il nostro cuore è italiano ma la nostra mente ci fa viaggiare in tutto il mondo, in ogni sport e a qualsiasi livello



## Our history and our objectives are illustrated in these pages.

Our heart is in Italy, but our mind allows us to travel the world, in every sport and at all levels.

## Notre histoire et nos objectifs renfermés dans ces pages.

Notre cœur est italien mais notre esprit nous fait voyager dans le monde entier, dans tous les sports et à tous les niveaux



DOWNLOAD



**WE  
STAND  
FOR CLEAN  
SPORT.  
EVEN FOR  
YOUR  
SKIN.**

Sport is the most beautiful thing in the world, and nothing must be allowed to pollute that beauty. That is why, besides developing increasingly high-performance materials that have a low impact on the environment, we at Erreà are the first teamwear company in Europe to have been awarded **STANDARD 100 by OEKO-TEX®** certification. This certification sets extremely strict limits for substances harmful to health, which is why our fabrics are highly safe in all conditions. **With Erreà, sport and health run side by side.**

**POUR  
UN  
SPORT  
SAIN.  
JUSQUE  
SUR  
LA PEAU.**

Le sport est la plus belle chose au monde et rien ne doit l'entacher. C'est pourquoi, au-delà de la conception de matières toujours plus performantes et respectueuses de l'environnement, Erreà est le premier fabricant européen de vêtements de sport à avoir obtenu la certification **STANDARD 100 by OEKO-TEX®**. Une attestation qui fixe des limites extrêmement strictes en matière de substances nocives pour la santé. Voilà pourquoi nos tissus garantissent un haut niveau de sécurité en toutes conditions d'utilisation. **Avec Erreà, sport et santé vont toujours de pair.**



**SIAMO  
PER  
LO SPORT  
PULITO.  
ANCHE  
SULLA  
PELLE.**

Lo sport è la cosa più bella del mondo e nulla deve inquinare la sua bellezza. Per questo, oltre a studiare materiali sempre più performanti e a basso impatto ambientale, noi di Erreà siamo la prima azienda in Europa nel settore teamwear ad aver ottenuto la certificazione **STANDARD 100 by OEKO-TEX®**. Un attestato che pone limiti estremamente rigorosi in tema di sostanze nocive per la salute. Ecco perché i nostri tessuti garantiscono un elevato livello di sicurezza in qualsiasi condizione di impiego. **Con Erreà, sport e salute corrono sempre insieme.**



erreà.com



## ANTIVIRALE ANTIBATTERICO CERTIFICATO OEKO-TEX

**TI-ENERGY: IL NUOVO TESSUTO ANTIVIRALE\***  
Frutto delle più moderne tecnologie nel campo dei polimeri avanzati e dell'esperienza maturata nell'utilizzo delle nanotecnologie iniziata nel 2008, la sezione Ricerca e Sviluppo di Erreà presenta il **nuovo tessuto antivirale\* Ti-energy**.

Si tratta di un importantissimo traguardo raggiunto in ambito tessile ottenuto grazie all'impiego di due distinte tecnologie: la **presenza di nanoparticelle di ossido di zinco** incapsulate in modo permanente nelle fibre di tessuto per ottenere **efficacia antivirale\* e antibatterica** e il **trattamento Minusnine J1+** per conferire estrema impermeabilità ai liquidi. Questa duplice funzionalizzazione consente al tessuto di diventare **un'efficace barriera protettiva contro droplet, liquidi, batteri e virus**.


 **Certificato Oeko-Tex Standard 100**, Ti-energy sarà disponibile anche per tutte le società sportive che vorranno utilizzarlo per offrire una maggiore sicurezza ai propri atleti.

\*I test eseguiti secondo la ISO 18184, utilizzando il virus SARS-CoV-2, hanno mostrato che il tessuto **Ti-energy®3.0** in laboratorio ha una riduzione della carica virale del 99,85% rispetto ad un comune tessuto in poliestere dopo 6 ore di contatto con il virus.

## ANTI-VIRAL ANTIBACTERIAL OEKO-TEX CERTIFIED

**TI-ENERGY: THE NEW ANTI-VIRAL\* FABRIC**  
Fruit of state-of-the-art technologies in the field of advanced polymers and of the experience gained in the use of nanotechnologies since 2008, the Erreà research and development team is **presenting Ti-energy, the new anti-viral\* fabric**.

This truly important achievement in the world of fabrics was made possible by the use of two separate technologies: **the zinc oxide nanoparticles**, permanently encapsulated in the fibres, **have antiviral\* and antimicrobial properties**, and the **Minusnine J1+** treatment which makes the fabric super-impermeable to liquids. This dual function allows the fabric to form an effective **protective barrier against droplets, liquids, bacteria and viruses**.


 **Oeko-Tex Standard 100 certified**, Ti-energy will also be available to all sports clubs that want to use it to enhance the safety of their athletes.

\*Tests performed in accordance with ISO 18184 using the SARS-CoV-2 virus, have proved that in the laboratory, **Ti-energy®3.0** can reduce the viral load by 99,85% compared to a standard polyester fabric six hours after coming into contact with the virus.

## ANTIVIRAL ANTIBACTÉRIEN CERTIFIÉ OEKO-TEX

**TI-ENERGY : LE NOUVEAU TISSU ANTIVIRAL\***  
Fruit des technologies les plus modernes dans le domaine des polymères avancés et de l'expérience acquise dans l'utilisation des nanotechnologies, qui a débuté en 2008, la section R&D d'Erreà Sport présente le **nouveau tissu antiviral\* Ti-energy**.

Cet extraordinaire succès en matière textile est le fruit de l'association de deux technologies spécifiques : la **présence de nanoparticules d'oxyde de zinc encapsulées qui restent dans les fibres** de tissu pour déployer leur efficacité antivirale et antibactérienne, et le traitement **Minusnine J1+**, qui confère une **impermeabilité extrême** aux liquides. Cette double fonctionnalisation permet au tissu de devenir **une barrière protectrice efficace** contre **gouttelettes, liquides, bactéries et virus**.

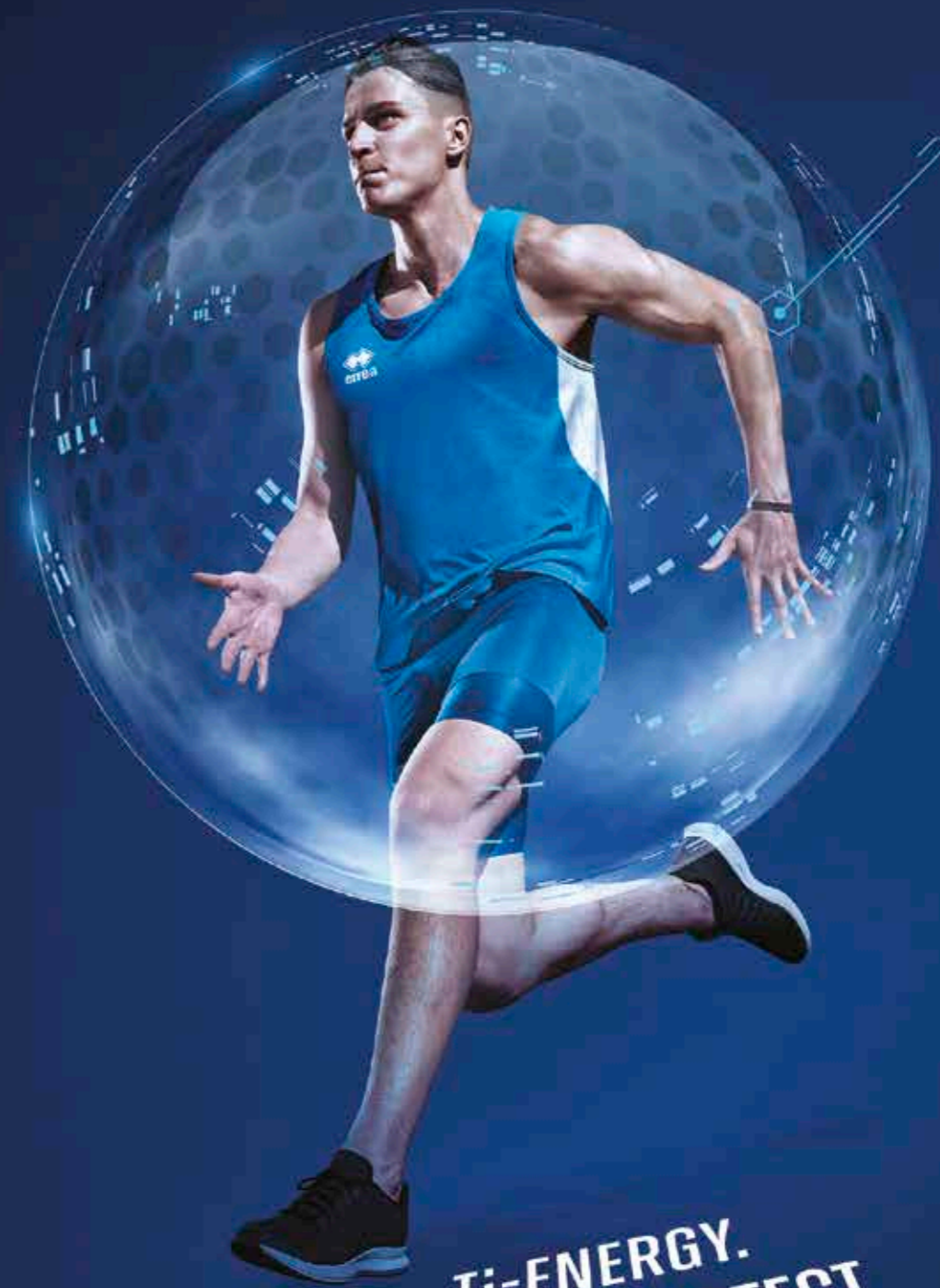
 **Certifié Oeko-Tex Standard 100**, Ti-energy sera proposé également à tous les clubs de sport qui souhaitent l'utiliser afin d'offrir davantage de sécurité à leurs athlètes.

\*Les tests réalisés selon la norme ISO 18184 avec le virus SARS-CoV-2 ont montré que, en laboratoire, le tissu **Ti-energy®3.0** assure une réduction de 99,85% de la charge virale comparé à un tissu commun en polyester au bout de 6 heures de contact avec le virus.

CON ERREÀ SPORT  
SALUTE E SICUREZZA  
CORRONO SEMPRE  
INSIEME

WITH ERREÀ SPORT  
HEALTH AND SAFETY  
ALWAYS RUN  
HAND IN HAND

AVEC ERREÀ SPORT,  
SANTÉ ET SÉCURITÉ  
VONT TOUJOURS  
ENSEMBLE !



**Ti-ENERGY.  
BORN TO PROTECT.**

Zn<sup>+</sup>



Only take on the opponents you know. **Ti-energy®3.0**, our new **antiviral, antibacterial, antimicrobial and waterproof fabric**, will take care of the rest. Thanks to the zinc oxide nanoparticles permanently incorporated into the fibres and the Minusnine J1+ treatment, this yarn combats, prevents and inhibits the development of invisible enemies while also creating a barrier against water, mould and unpleasant odours. Furthermore, it is **Oeko-Tex® Standard 100 Certified** which means it meets extremely stringent restrictions governing harmful substances. It has taken us twelve years to create a fabric as evolved as **Ti-energy®3.0**. It will take you just seconds to feel more protected than ever before. **With Erreà, sport, health and safety always run hand in hand.**

\*Tests performed in accordance with ISO 18184 using the SARS-CoV-2 virus, have proved that in the laboratory, **Ti-energy®3.0** can reduce the viral load by 99,85% compared to a standard polyester fabric six hours after coming into contact with the virus.



erreà.com

## COMPETITION TEXTILE



135  
g/mq

**B-HIVE**  
100% polyester

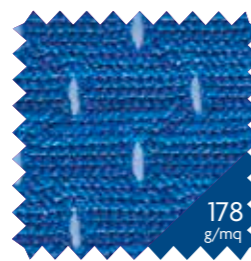
- trama ad alveare/honeycomb weaving/trame alvéolée
- traspirante/breathable/respirant
- leggero/light/léger
- doppio filato/double thread/ fil double



190  
g/mq

**MALAGA**  
80% polyamide - 20% elastane

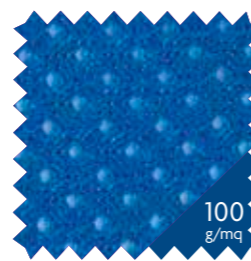
- leggerezza ed elasticità/ lightness and elasticity/ légèreté et élasticité
- resiste al cloro, alle abrasioni/ resistant to chlorine and abrasion/ résiste au chlore, aux abrasions
- protegge dai raggi UV/offers protection against UV rays/ protège des rayons UV
- leggero/ light/ léger



178  
g/mq

**MEMPHIS MESH**  
100% polyester

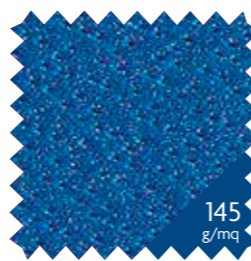
- particolarmente robusto/ particularly robust/ particulièrement robuste
- fori di medie dimensioni/medium-sized holes/trous de moyenne dimension
- non assorbe macchie e umidità/ does not absorb stains and humidity/n'absorbe pas les taches ni l'humidité outside



100  
g/mq

**MESH 6TP**  
100% polyester

- fori di medie dimensioni/medium-sized holes/trous de moyenne dimension
- comfort/comfort/confort
- piuttosto elastico/quite elasticated/plutôt élastique
- inattaccabile da muffe e batteri/ mould and bacteria resistant/ inattaquable par les moisissures et les bactéries



145  
g/mq

**MUNDIAL**  
100% polyester

- morbido/soft/doux
- traspirante/breathable/respirant
- doppia foratura/double-knit/ double fonture
- asciuga velocemente/quick drying/sèche rapidement



165  
g/mq

**PREMIER**  
82% polyester - 18% elastane

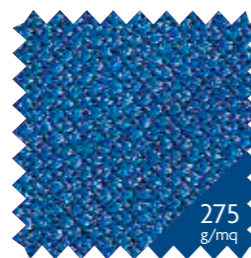
- pregiati filati elasticizzati/top quality elasticated yarns/fils élastiques de grande qualité
- particolare leggerezza/particular lightness/légèreté particulière
- resistenza all'abrasione/excellent resistance to abrasion/excellente résistance à l'abrasion



192  
g/mq

**ROCCIA**  
100% polyester

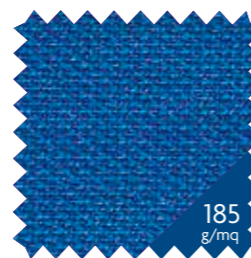
- tela di poliestere/polyester cloth/toile de polyester
- elevata robustezza/high level of strength/grande robustesse
- asciuga velocemente/quick drying/sèche rapidement
- inattaccabile da muffe e batteri/ resistance to mould and bacteria/ inattaquable par les moisissures et les bactéries



275  
g/mq

**RUGBY STAMPA**  
100% polyester

- esalta i colori/exalts colours/ rehausse les couleurs
- massima robustezza/maximum robustness/robustesse maximum
- studiato per la stampa transfer tradizionale e digitale/ designed for both traditional and digital sublimation printing/ étudié pour l'impression transfert traditionnelle ou numérique



185  
g/mq

**SATURNO LIGHT**  
100% polyester

- estremamente resistente/ extremely strong/extrêmement résistant
- elevato grado di elasticità ottenuto meccanicamente/ high level of elasticity achieved mechanically/ haut degré d'élasticité obtenu mécaniquement



125  
g/mq

**SKIN**  
100% polyester

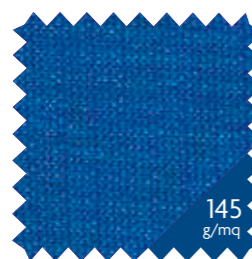
- tessuto opaco/opaque fabric/ tissu opaque
- risulta inattaccabile da muffe e batteri/ mould and bacteria resistant/ inattaquable par les moisissures et les bactéries
- asciuga velocemente/quick drying/sèche rapidement



220  
g/mq

**SORRENTO**  
92% cotton - 8% elastane

- cotone elasticizzato garzato/ elasticated brushed cotton/coton élastique brossé
- morbido e soffice/soft and light/ doux
- la garzatura interna conferisce un aspetto peloso e vellutato alla superficie/the internal brushing gives the surface a fleecy and velvety look/le lainage interne donne un aspect poilu et velouté à la surface



145  
g/mq

**UTILITY**  
100% polyester

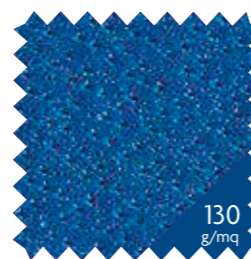
- tessuto circolare/circular woven fabric/tissu circulaire
- presenza di microfori per la traspirazione/presence of micro-holes for breathability/ présence de microtrous pour la transpiration
- asciuga velocemente/quick drying/sèche rapidement



108  
g/mq

**TECHNO STRECH**  
100% polyester

- multibava/filament yarn/multifilament
- tessuto elasticizzato meccanicamente/ mechanically elasticized fabric/tissu rendu élastique mécaniquement
- leggero/ light/ léger
- elastico/ elastic/ élastique
- trattamento wicking/ wicking treatment/ traitement wicking
- asciugatura rapida/ fast drying/ séchage rapide



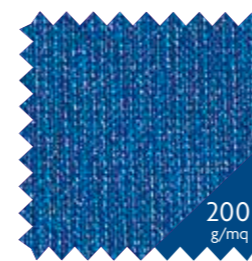
130  
g/mq

**TI-ENERGY 3.0**  
100% polyester

- antivirale e antibatterico/antiviral and antibacterial/antiviral et antibactérien
- nanoparticelle di ossido di zinco incapsulate nelle fibre/ zinc oxide nanoparticles encapsulated in the fibres/nanoparticules d'oxyde de zinc encapsulées dans les fibres
- trattamento idrorepellente Minusine/ Minusine/ water repellent treatment/ traitement hydrofuge Minusine/



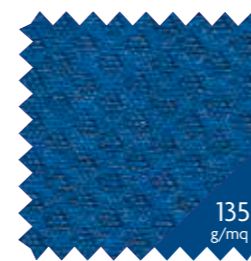
## FREETIME TEXTILE



200  
g/mq

**ADAM J**  
100% polyester

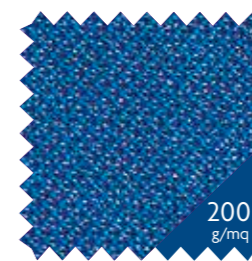
- 2 in 1 / 2 in 1 / 2 en 1
- comfort/comfort/confort
- interno in micropile/micropile on the inside/intérieur en micropolaire
- esterno in piquet/piquet on outside/extérieur en piqué
- buon isolamento termico/provides good thermal isolation/bonne isolation thermique



135  
g/mq

**B-HIVE**  
100% polyester

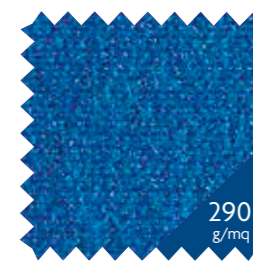
- trama ad alveare/honeycomb weaving/trame alvéolée
- traspirante/breathable/respirant
- leggero/light/léger
- doppio filato/double thread/ fil double



200  
g/mq

**BASIC**  
100% polyester

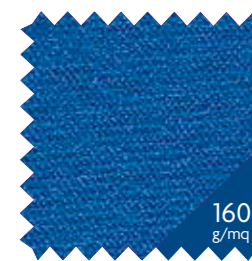
- morbido/soft/souple
- lievemente elastico/slightly stretchy/légèrement élastique
- non sgualisce/does not crease/ ne se chiffonne pas
- mantiene la piega/holds its shape/ garde le pli



290  
g/mq

**CARBON**  
65% cotton - 35% polyester

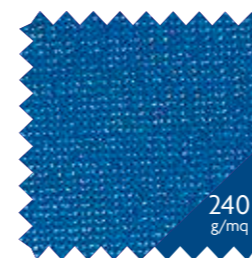
- doppia garzatura/double brushed fleece/double lainage
- caldo/warm/chaud
- interno in cotone/cotton on the inside/intérieur en coton
- esterno in poliestere/polyester on outside/extérieur en polyester



160  
g/mq

**COTTON 1186**  
100% cotton

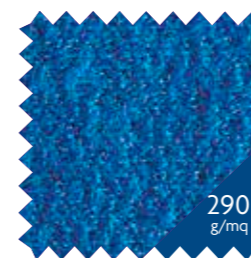
- jersey di cotone pettinato/ combed cotton jersey/jersey de coton peigné
- morbido/soft/doux
- sensazione di freschezza a contatto con la pelle/ sensation of freshness on the skin/ sensation de fraîcheur au contact de la peau



240  
g/mq

**FULL**  
100% polyester

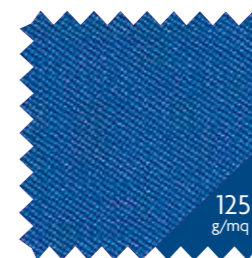
- molto robusto/very robust/très robuste
- interno smerigliato/brushed on the inside/intérieur poli
- caldo/warm/chaud
- esterno semilucido/semi-polished on the outside/extérieur semi-brillant
- colori vivi e brillanti/vivid, bright colors/coloris vifs et brillants



290  
g/mq

**KAMELIA**  
80% cotton - 20% polyester

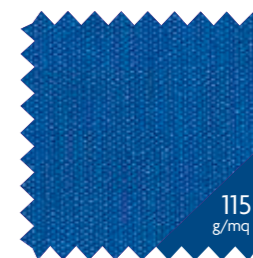
- felpa garzata/brushed fleece/ polaire brossé
- comfort/comfort/confort
- interno in cotone/cotton on the inside/ intérieur en coton
- esterno in poliestere/polyester on the outside/extérieur en polyester
- morbido/soft/doux



125  
g/mq

**MICROPESENTE**  
100% polyester

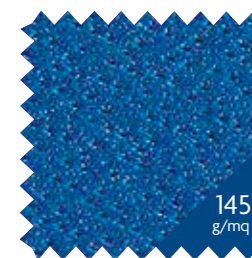
- realizzato con filati microfibra/ made from microfibre yarns/ réalisé avec des fils en microfibre
- water repellent/water repellent/ déperlant



115  
g/mq

**MICROSOFT**  
100% polyester

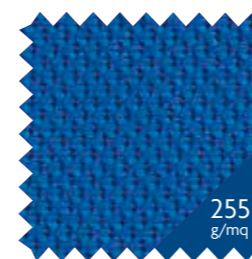
- realizzato con filati microfibra/ made from microfibre yarns/ réalisé avec des fils en microfibre
- massima leggerezza/ maximum lightness/légèreté maximale
- asciuga velocemente/inside in micropile/quick drying/sèche rapidement



145  
g/mq

**MUNDIAL**  
100% polyester

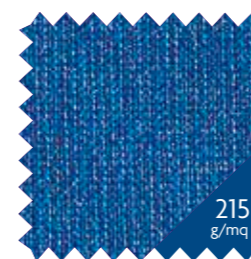
- morbido/soft/doux
- traspirante/breathable/ respirant
- doppia foratura/double-knit/ double fonture
- asciuga velocemente/quick drying/sèche rapidement



255  
g/mq

**NIDO D'APE**  
100% polyester

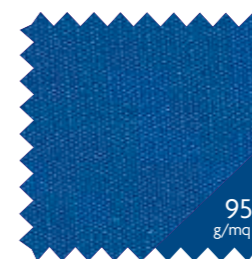
- lavorazione a nido d'ape/ honeycomb weave/travillé en nid d'abeille
- lucido/shiny/brillant
- massima robustezza/maximum strength/solidité maximale



215  
g/mq

**PIQUET**  
100% polyester

- estremamente robusto/extremely robust/extrêmement robuste
- interno smerigliato/brushed on the inside/intérieur poli
- caldo/warm/chaud
- colori vivi/vivid colors/coloris vifs
- traspirante/breathable/respirant



95  
g/mq

**STRIPTE**  
100% polyester

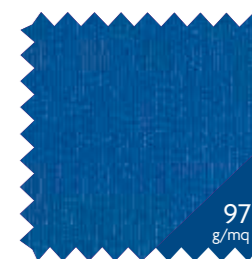
- molto resistente/excellent resistance/très résistant
- trattamento "hydro stop"/"hydro stop" treatment/traitement "hydro stop"
- inattaccabile dagli agenti atmosferici, muffe e batteri/ weatherproof and resistant to moulds and bacteria/ inattaquable par les agents atmosphériques, moisissures et bactéries



200  
g/mq

**SUPERGA**  
92% cotton - 8% elastane

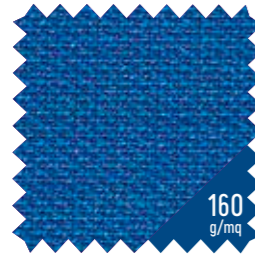
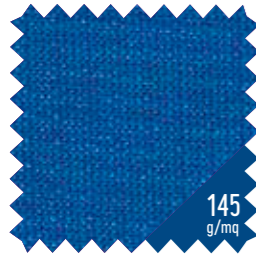
- cotone elasticizzato/stretch cotton/ coton extensible
- morbido al tatto/ soft to the touch/doux au toucher
- lascia sensazione di freschezza/ gives a sensation of freshness/ laisse une sensation de fraîcheur



97  
g/mq

**TASLAND**  
100% polyester

- confortevole/comfortable/ confortable
- molto resistente/excellent resistance/très résistant
- trattamento "hydro stop"/ "hydro stop" treatment/ traitement "hydro stop"



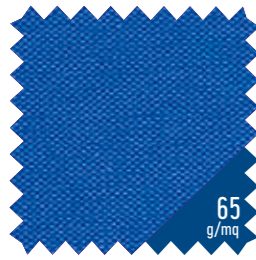
**UTILITY**  
100% polyester

- Tessuto circolare/circular woven fabric/tissu circulaire
- presenza di microfori per la traspirazione/presence of micro-holes for breathability/présence de microtrous pour la transpiration
- asciuga velocemente/quick drying/sèche rapidement

**WARM-UP**  
100% polyester

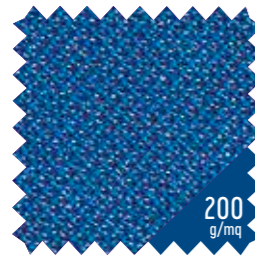
- robusto/robust/robuste
- interno smerigliato/brushed on the inside/intérieur émerisé
- esterno in piquet/ piqué on the outside/l'extérieur en piqué

## TRAINING TEXTILE



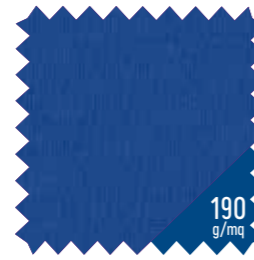
**B30 POLIESTERE**  
100% polyester

- antivento/wind-resistant/ coupe-vent
- water repellent/water repellent/déperlant
- resistente/resistant/résistance
- asciuga velocemente/quick drying/sèche rapidement



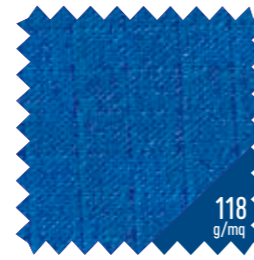
**BASIC**  
100% polyester

- morbido/soft/souple
- lievemente elastico/slightly stretchy/légèrement élastique
- non sgualisce/does not crease /ne se chiffonne pas
- mantiene la piega/holds its shape/garde le pli



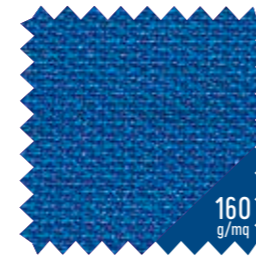
**MALAGA**  
80% polyamide - 20% elastane

- leggerezza ed elasticità/lightness and elasticity/légèreté et élasticité
- Resiste al cloro, alle abrasioni/Resistant to chlorine and abrasion/ résiste au chlore, aux abrasions
- protegge dai raggi UV/offers protection against UV rays/protège des rayons UV
- leggero/light/léger



**RIB WIND**  
100% polyester

- resistente/resistant/résistance maximale
- trattamento "hydro stop"/"hydro stop" treatment/traitement «hydro stop»
- inattaccabile dagli agenti atmosferici, muffe e batteri/weatherproof and resistant to moulds and bacteria/inattaquable par les agents atmosphériques, moisissures et bactéries



**WARM-UP100%**  
polyester

- robusto/robust/robuste
- interno smerigliato/brushed on the inside/intérieur émerisé
- esterno in piquet/ piqué on the outside/l'extérieur en piqué

## SYMBOLS



VESTIBILITÀ ADERENTE  
VERY CLOSE FITTING  
VESTIBILITE ADHERENTE



VESTIBILITÀ SEMI-ADERENTE  
CLOSE FITTING  
VESTIBILITE SEMI-ADHERENTE



VESTIBILITÀ NORMALE  
NORMAL FITTING  
VESTIBILITE NORMALE



RICAMO  
EMBROIDERY  
BRODERIE



STAMPA A CALDO  
HEAT APPLICATION  
FLOCCAGE



PERSONALIZZABILE  
CUSTOMIZABLE  
PERSONNALISABLE



MODELLO DISPONIBILE PER TRANSFER  
MODEL AVAILABLE per sublimation  
MODÈLE DISPONIBILE puor sublimation



DISPONIBILE FINO AL  
FINAL YEAR IN CATALOGUE  
DISPONIBILE JUSQU'AU



VESTIBILITÀ DONNA  
WOMAN FITTING  
VESTIBILITE FEMME

# TRIATHLON



# KENNY

Adult  
**GMOIOS**  
S-XXL

Junior  
**GMOIIS**  
XXS-XS



UTILITY 100% polyester - 145 g/mq

2024

- Collo a giro e sbracci con bordini in contrasto
- Cuciture piatte in tinta
- Fianchette laterali in contrasto
- Inserti catarifrangenti sul davanti e nel retro

- Crew neck and armholes with contrasting trim
- Flat stitching in matching colour
- Contrasting side panels
- Reflectors on front and back

- Col rond et emmanchures avec bords en contraste
- Coutures plates de même couleur
- Pièces latérales en contraste
- Pièces rétro réfléchissantes avant et arrière



**00300** white/grey    **00500** red/white    **01500** blue/white    **59080** yellow fluo/white    **01900** navy/white    **08180** black/green fluo



# KENNY WOMAN

Adult  
**GMOJOS**  
S-XXL

Junior  
**GMOJIS**  
XXS-XS



UTILITY 100% polyester - 145 g/mq

2024

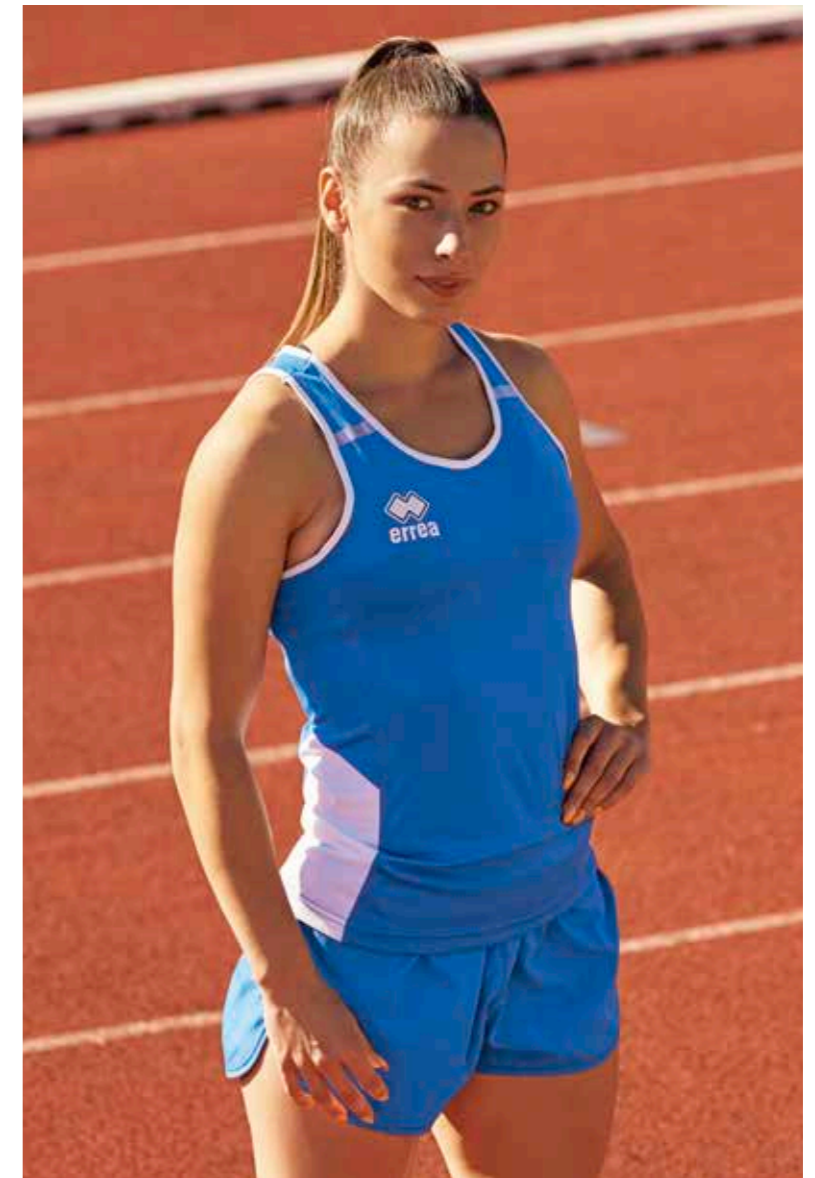
- Collo a giro e sbracci con bordini in contrasto
- Cuciture piatte in tinta
- Fianchette laterali in contrasto
- Inserti catarifrangenti sul davanti e nel retro

- Crew neck and armholes with contrasting trim
- Flat stitching in matching colour
- Contrasting side panels
- Reflectors on front and back

- Col rond et emmanchures avec bords en contraste
- Coutures plates de même couleur
- Pièces latérales en contraste
- Pièces rétro réfléchissantes avant et arrière



**00300** white/grey    **00500** red/white    **01500** blue/white    **59080** yellow fluo/white    **01900** navy/white    **08180** black/green fluo





# STARTER

Adult  
**GMIMOS**  
S-XXL

Junior  
**GMIMIS**  
XXS-XS



UTILITY 100% polyester - 145 g/mq

2026

- Collo a giro e sbracci con bordini
- Cuciture piatte in tinta
- Fianchette laterali
- Applicazione catarifrangente sul retro

- Crew neck and edged armholes
- Flat seams in matching colour
- Side panels
- High-visibility detail on the back

- Col rond et emmanchures avec bords
- Coutures plates de même couleur
- Pièces latérales
- Application rétro réfléchissante à l'arrière



00210  
white/red



00260  
white/blue



01500  
blue/white



02500  
black/white



00900  
green/white



04920  
yellow fluo/black



59120  
green fluo/black



# STARTER WOMAN

Adult  
**GMINOS**  
S-XL

Junior  
**GMINIS**  
XXS-XS



UTILITY 100% polyester - 145 g/mq

2026

- Collo a giro e sbracci con bordini
- Cuciture piatte in tinta
- Fianchette laterali
- Applicazione catarifrangente sul retro

- Crew neck and edged armholes
- Flat seams in matching colour
- Side panels
- High-visibility detail on the back

- Col rond et emmanchures avec bords
- Coutures plates de même couleur
- Pièces latérales
- Application rétro réfléchissante à l'arrière



00210  
white/red



00260  
white/blue



01500  
blue/white



02500  
black/white



00900  
green/white



04920  
yellow fluo/black



59120  
green fluo/black





# CURTIS

Adult  
**GMIDOC**  
S-3XL

Junior  
**GMIDIC**  
YXS-XXS-XS



MUNDIAL 100% polyester - 145 g/mq  
SKIN 100% polyester - 125 g/mq

9202

- Manica a giro con polso
- Collo a giro e parasudore interno elastico
- Inserti e sbieco in tessuto Skin
- Fondo maglia con orlo

- Set-in sleeves with cuff
- Crew neck with internal elastic neck tape
- Inserts and bias binding in Skin fabric
- Hemmed shirt bottom

- Manches montées avec poignets
- Col rond et bande de propreté interne élastique
- Empiècements et biais en tissu Skin
- Bas du maillot avec ourlet



**05210**  
white/blue/navy



**00410**  
white/navy/red



**00670**  
red/black/white



**02850**  
orange/black/white



**00870**  
yellow/blue/white



**05660**  
yellow/black/white



**01070**  
green/black/white



**03260**  
maroon/black/white



**06710**  
blue/white/navy



**07320**  
navy/white/yellow



**04210**  
navy/white/red



**08140**  
black/white/anthracite



# EVERTON

Adult **EMIROC** S-3XL  
 Junior **EMIRIC** YXS-XXS-XS  
 Kid **EMIR2C** 2YXS  
 Only white, red, blue and navy



UTILITY 100% polyester - 145 g/mq

2024

- Manica a giro
- Collo a giro con parasudore interno elastico
- Cuciture con copertura a tre aghi in contrasto
- Inserti laterali per una migliore vestibilità
- Set-in sleeves
- Crew neck with internal elastic neck-tape
- Three-needle over stitching in contrasting colour
- Side panels for improved wearability
- Manche montée
- Col rond avec bande de propreté interne élastique
- Coutures avec couverture à trois aiguilles, en contraste
- Empiècements latéraux pour une meilleure ligne



00010  
white



00150  
maroon



00020  
red



03340  
orange fluo



00030  
yellow



03310  
yellow fluo



03320  
green fluo



00040  
green



35990  
cyan



00070  
blue



00090  
navy



00120  
black





# MARVIN

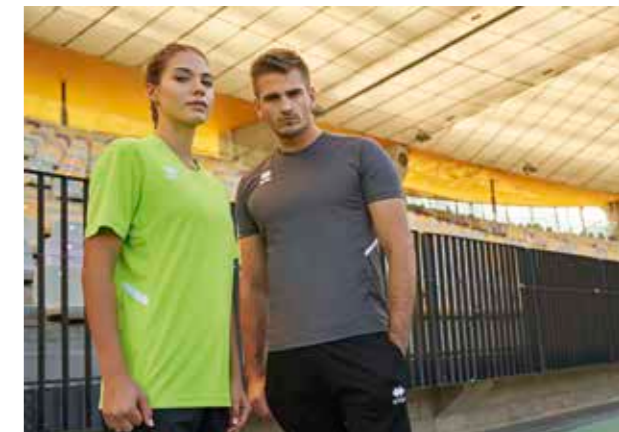
Adult **GMIFOC** S-3XL  
 Junior **GMIFIC** YXS-XXS-XS  
 Kid **GMIF2C** 2YXS



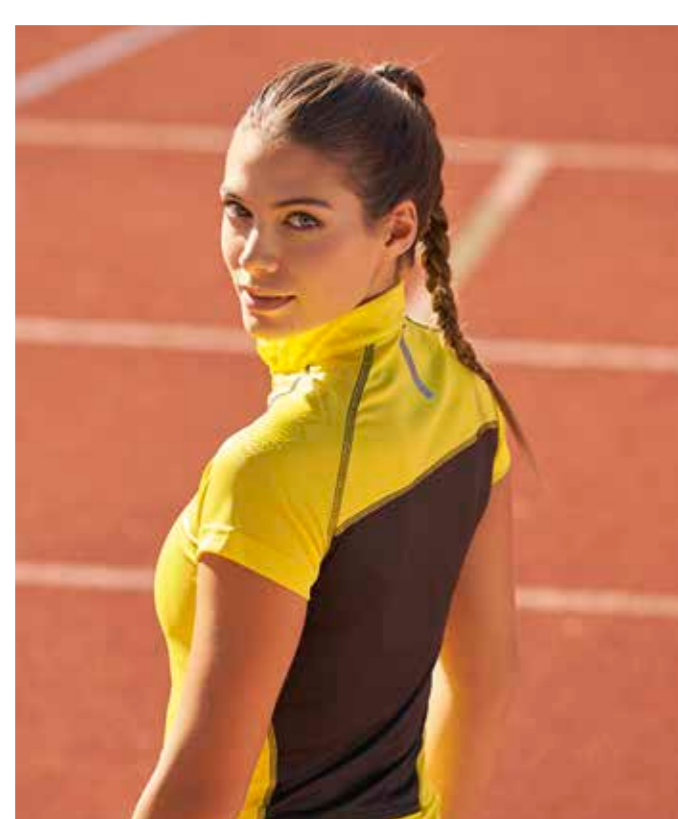
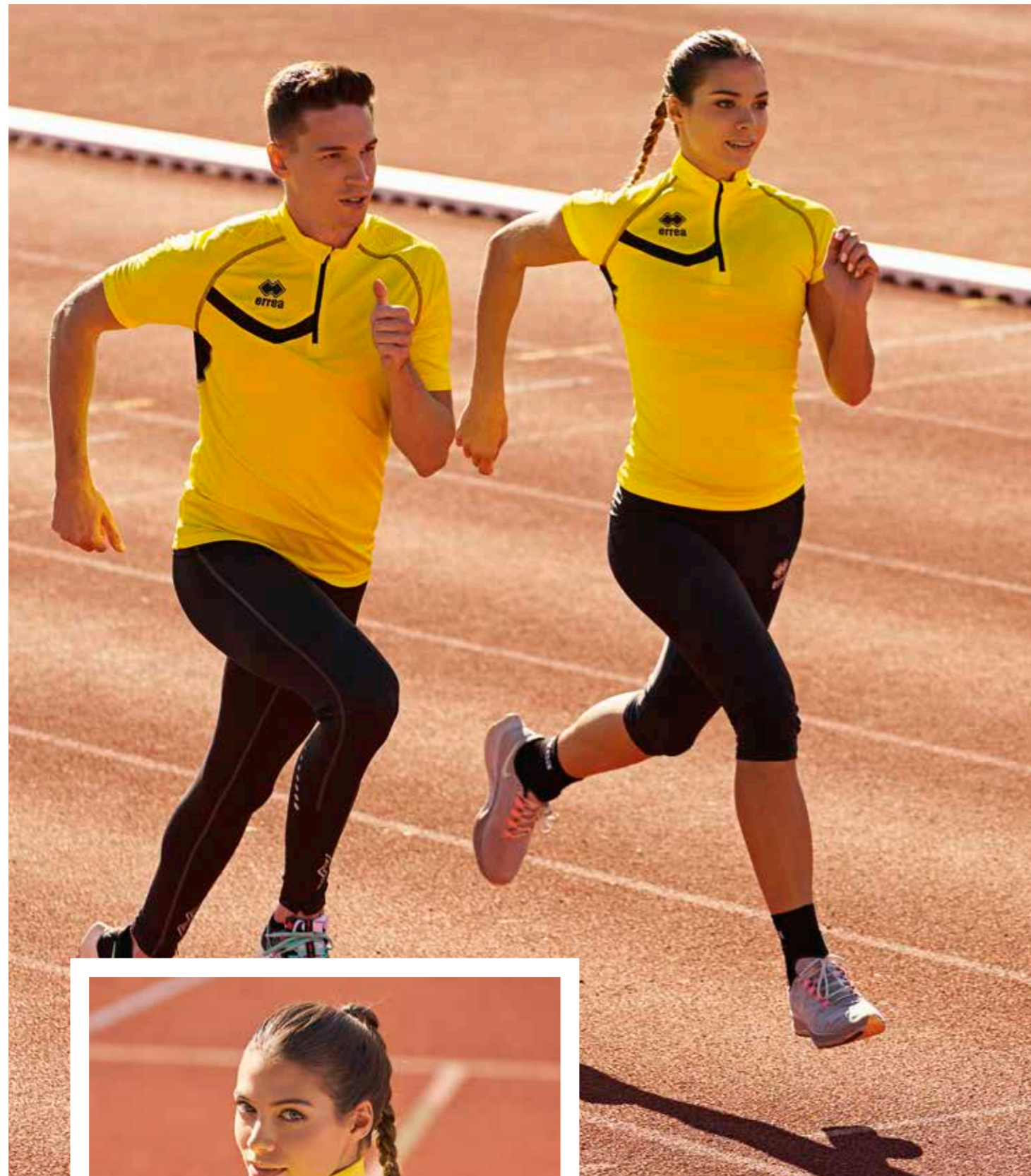
SKIN 100% polyester - 125 g/mq

2026

- Manica a giro
- Collo a giro con parasudore interno elastico
- Inserti laterali per una migliore vestibilità
- Sbieco sui fianchi in tessuto Skin
- Set-in sleeves
- Crew neck with internal elastic neck tape
- Lateral inserts for improved wearability
- Bias binding on sides in Skin fabric
- Manches montées
- Col rond avec bande de propreté interne élastique
- Empiècements latéraux pour une meilleure ligne
- biais sur les côtés en tissu Skin







# ROGER

Adult  
**GMIOOC**  
S-XXL

Junior  
**GMIOIC**  
XS



MUNDIAL 100% polyester - 145 g/mq  
UTILITY 100% polyester - 145 g/mq

- Manica raglan
  - Collo alla coreana con cerniera half-zip
  - Taschino con cerniera sul retro
  - Inserti laterali e sulla schiena in contrasto
  - Cuciture piatte in contrasto
  - Applicazione catarifrangente sul retro
  - Serigrafia gommata sulla spalla
- Raglan sleeves
  - Mandarin collar with half-length zip
  - Zip pocket on the back
  - Side and back inserts in contrasting colour
  - Flat seams in contrasting colour
  - High-visibility detail on the back
  - Rubberised silkscreen on shoulder
- Manches raglan
  - Col mao avec zip à mi-hauteur
  - Petite poche zippée à l'arrière
  - Empiècements latéraux et dans le dos en contraste
  - Coutures plates en contraste
  - Application rétro réfléchissante à l'arrière
  - Sérigraphie en caoutchouc sur les épaules



**00500**  
red/white



**04920**  
yellow fluo/black



**59120**  
green fluo/black



**02500**  
black/white

# SHELLY

Adult  
**GMIPOC**  
S-XL

Junior  
**GMIPIC**  
XS



MUNDIAL 100% polyester - 145 g/mq  
UTILITY 100% polyester - 145 g/mq

- Manica raglan
  - Collo alla coreana con cerniera half-zip
  - Taschino con cerniera sul retro
  - Inserti laterali e sulla schiena in contrasto
  - Cuciture piatte in contrasto
  - Applicazione catarifrangente sul retro
  - Serigrafia gommata sulla spalla
- Raglan sleeves
  - Mandarin collar with half-length zip
  - Zip pocket on the back
  - Side and back inserts in contrasting colour
  - Flat seams in contrasting colour
  - High-visibility detail on the back
  - Rubberised silkscreen on shoulder
- Manches raglan
  - Col mao avec zip à mi-hauteur
  - Petite poche zippée à l'arrière
  - Empiècements latéraux et dans le dos en contraste
  - Coutures plates en contraste
  - Application rétro réfléchissante à l'arrière
  - Sérigraphie en caoutchouc sur les épaules



**00500**  
red/white



**04920**  
yellow fluo/black



**59120**  
green fluo/black



**02500**  
black/white



# CORINNE

Adult  
GMIE0C  
S-XXL

Junior  
GMIEIC  
YXS-XXS-XS



MUNDIAL 100% polyester - 145 g/mq  
SKIN 100% polyester - 125 g/mq

- Manica a giro con polso
- Collo a giro e parasudore interno elastico
- Inserti e sbieco in tessuto Skin
- Fondo maglia con orlo
- Set-in sleeves with cuff
- Crew neck with internal elastic neck tape
- Inserts and bias binding in Skin fabric
- Hemmed shirt bottom
- Manches montées avec poignets
- Col rond avec bande de propreté interne élastique
- Empiècements et biais en tissu Skin
- Bas du maillot avec ourlet



05210  
white/blue/navy



00410  
white/navy/red



00670  
red/black/white



02850  
orange/black/white



00870  
yellow/blue/white



05660  
yellow/black/white



01070  
green/black/white



03260  
maroon/black/white



06710  
blue/white/navy



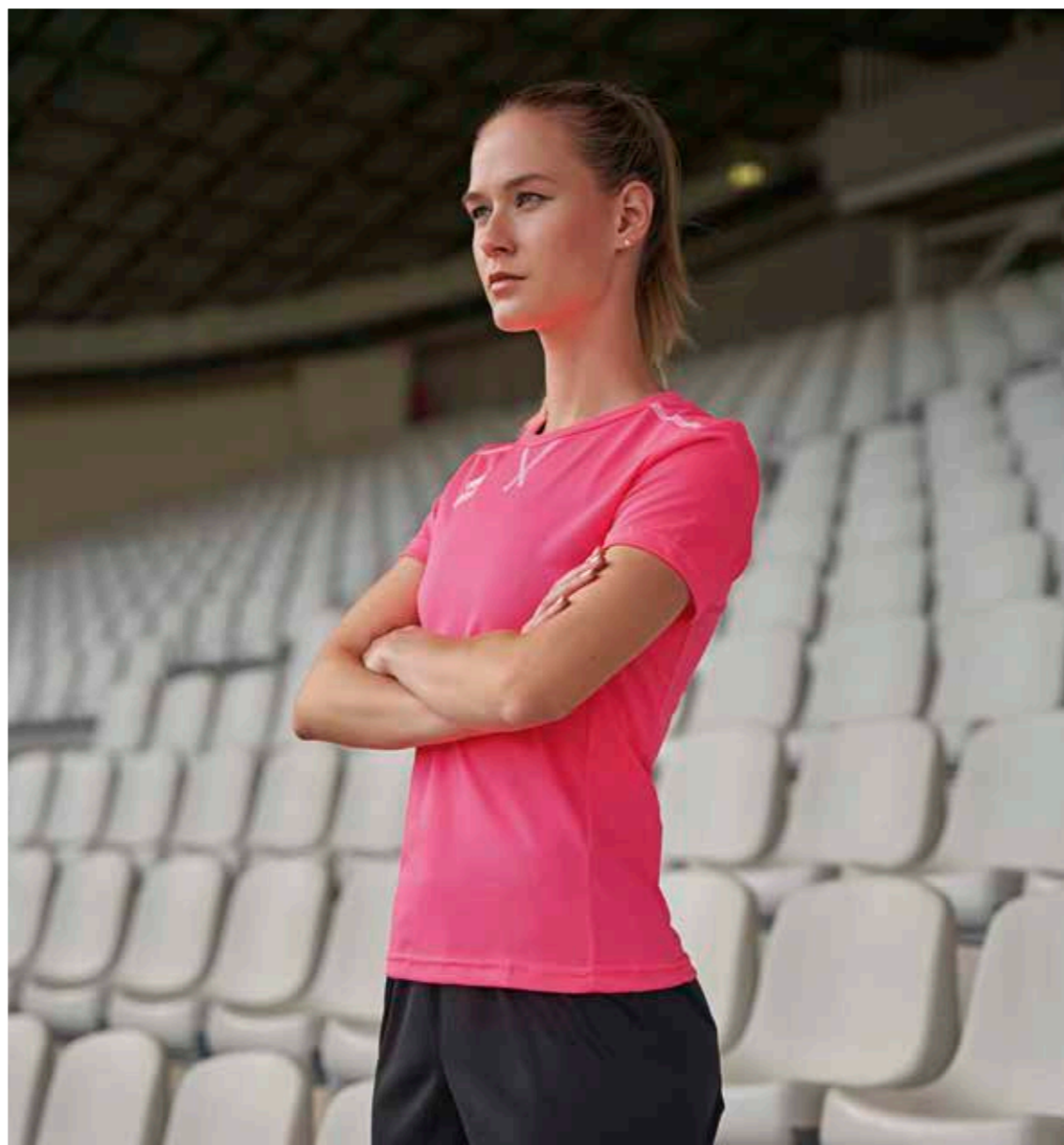
07320  
navy/white/yellow



04210  
navy/white/red



08140  
black/white/anthracite



# MARION

Adult  
EMITOC  
S-XXL

Junior  
EMITIC  
YXS-XXS-XS



UTILITY 100% polyester - 145 g/mq

- Manica a giro
- Collo a giro con parasudore interno elastico
- Cuciture con copertura a tre aghi in contrasto
- Fianchette laterali per una migliore vestibilità

- Set-in sleeves
- Crew neck with internal elastic neck-tape
- Three-needle overstitching in contrasting colour
- Side panels for improved wearability

- Manche montée
- Col rond avec bande de propreté interne élastique
- Coutures de couverture à trois aiguilles, en contraste
- Empiècements latéraux pour une meilleure ligne



00010  
white



00150  
maroon



00020  
red



00340  
orange fluo



00330  
fuchsia fluo



00030  
yellow



00310  
yellow fluo



00320  
green fluo



00040  
green



35990  
cyan



00070  
blue



00090  
navy



00120  
black



# MEYER

Adult  
**FP850Z**  
S-XXL

Junior  
**FP85IZ**  
XS



100% POLYESTER

2026

- Elastico in vita e laccioli regolabili
- Slip interno
- Logo Erreà catarifrangente
- Spacchetto laterale
- Taschino con cerniera sul retro e piping catarifrangente
- Elastic waistband and adjustable drawstring
- Internal underpants
- Erreà logo reflector
- Side splits
- Zip pocket on back with reflective piping
- Élastique à la taille et lacets réglables
- Slip interne
- Logo Erreà rétroréfléchissant
- Fente latérale
- Petite poche zippée à l'arrière et passepoil rétroréfléchissant



**03320** green fluo  
**00020** red  
**00070** blue  
**00090** navy  
**00120** black

# HYPNOS XV

Adult  
**EPO10Z**  
S-XXL

Junior  
**EPO1IZ**  
XXS-XS



PREMIER 82% polyester 18% elastane - 165 g/mq

2026

- Elastico in vita e laccioli regolabili piatti
- Cuciture piatte in contrasto
- Taschino con cerniera posteriore
- Bermudas with elastic waistband and flat adjustable drawstring
- Flat stitching in contrasting colour
- Rear zip pocket
- Bermuda avec élastique à la taille and lacets plats réglables
- Coutures plates en contraste
- Petite poche arrière zippée



**00020** red  
**00070** blue  
**00090** navy  
**00120** black

# BLAST

Adult  
**D5005**  
S-XXL

Junior  
**D5006**  
XS



100% POLYESTER

2026

- Elastico in vita e laccioli regolabili
- Slip interno
- Logo Erreà catarifrangente
- Spacchetto laterale
- Elastic waistband and adjustable drawstring
- Internal underpants
- Reflective Erreà logo
- Side splits
- Élastique à la taille et lacets réglables
- Slip interne
- Logo Erreà rétroréfléchissant
- Fente latérale



**000002** red  
**000007** blue  
**000009** navy  
**000012** black

# GWEN

Adult  
**EPIFOZ**  
S-XXL

Junior  
**EPIFIZ**  
XXS-XS



PREMIER 82% polyester 18% elastane - 165 g/mq

2026

- Elastico in vita
- Cuciture piatte in contrasto
- Taschino con cerniera posteriore
- Laccioli regolabili piatti
- Elastic waistband
- Flat stitching in contrasting colour
- Rear zip pocket
- Flat adjustable drawstring
- Élastique à la taille
- Coutures plates en contraste
- Petite poche arrière zippée
- Lacets plats réglables



**00020** red  
**00070** blue  
**00090** navy  
**00120** black

# MILLS

Adult  
**FP750Z**  
S-XXL

Junior  
**FP75IZ**  
XS



PREMIER 82% polyester 18% elastane - 165 g/mq

2026

- 2 panta in 1 con interno elasticizzato aderente
- Elastico in vita e laccioli regolabili piatti
- Taschino con cerniera sul retro e piping catarifrangente
- 2 in 1 shorts with fitted elasticated internal part
- Elastic waistband and flat adjustable drawstring
- Zip pocket on back with reflective piping
- Short 2 en 1 avec intérieur élastique moulant
- Élastique à la taille et lacets plats réglables
- Petite poche zippée à l'arrière et passepoil rétroréfléchissant



**00020** red  
**00070** blue  
**00090** navy  
**00120** black

# OWENS

Adult  
**GP0M0Z**  
S-XXL

Junior  
**GP0MIZ**  
XXS-XS



UTILITY 100% polyester - 145 g/mq

2026

- Elastico in vita
- Inserti laterali in contrasto
- Slip interno
- Taschino con cerniera sul retro
- Laccioli regolabili
- Elastic waistband
- Contrasting inserts on the sides
- Inner underpants
- Zip pocket on the back
- Adjustable drawstring
- Élastique à la taille
- Empiècements latéraux en contraste
- Slip interne
- Petite poche zippée à l'arrière
- Lacets réglables



**00500** red/white  
**01500** blue/white  
**01900** navy/white  
**02500** black/white

# MARLENE

Adult  
**FP720Z**  
S-XXL

Junior  
**FP721Z**  
XS

MALAGA 80% polyamide 20% elastane - 190 g/mq

2024

- Leggings 3/4 ultra aderente
- Tagliato donna
- Vita ampia piatta
- Cuciture piatte
- Taschino con cerniera posteriore

- Tight-fitting 3/4 leggings
- Women's cut
- Wide flat waistband
- Flat stitching
- Rear zip pocket

- Legging 3/4 ultramoulant
- Coupe femme
- Bande de taille large et plate
- Coutures plates
- Petite poche arrière zippée



BACK

**00120**  
black



**04610**  
black/fuchsia fluo



**08180**  
black/green fluo

Fino ad esaurimento scorte  
White stocks last  
Jusqu'à épuisement du stock

# KIOS 3.0

Adult  
**FP870Z**  
S-XXL

Junior  
**FP871Z**  
XS

84% POLYESTER - 16% ELASTANE

2026

- Pantaloni aderenti con elastico in vita
- Cuciture piatte
- Taschino con cerniera posteriore
- Applicazione catarifrangente sulla gamba
- Laccioli regolabili piatti
- Cerniera alle caviglie

- Leggings with elastic waistband
- Flat stitching
- Rear zip pocket
- Reflector applied on the leg
- Flat adjustable drawstring
- Leg bottom with zip

- Pantalon adhérent avec élastique à la taille
- Coutures plates
- Petite poche arrière zippée
- Application rétro réfléchissante sur la jambe
- Lacets plats réglables
- Zip aux chevilles



**00090**  
navy



**00120**  
black



BACK

# FLANN

Adult  
**EPIH0Z**  
S-XXL

Junior  
**EPIH1Z**  
YXS-XXS-XS

Kid  
**EPIH2Z**  
2YXS

WARM-UP 100% polyester - 160 g/mq

2026

- Aderenti con elastico e laccioli in vita
- Tasche laterali con cerniera
- Fondo con cerniera e costina

- Elastic waistband and drawstring
- Zip pockets on sides
- Ribbed ankle cuffs with zip

- Élastique et lacets à la taille
- Poches latérales zippées
- Bas avec zip et bord-côte



**00120**  
black



**00090**  
navy

BACK

# DYNAMIC

Adult  
**GG0M0Z**  
S-XXL

Junior  
**GG0M1Z**  
XXS-XS

WARM-UP 100% polyester - 160 g/mq

2026

- Cerniera half-zip in contrasto
- Asole per i pollici alle estremità delle maniche
- Collo a lupetto con piping in contrasto
- Tasca posteriore con zip
- Logo catarifrangente su fronte e retro
- Inserti laterali in contrasto

- Half-length zip in contrasting colour
- Thumbholes at the end of sleeves
- Turtleneck with contrasting piping
- Zip pocket on the back
- Logo reflector on front and back
- Contrasting inserts on the sides

- Zip à mi-hauteur en contraste
- Ouvertures pour les pouces aux extrémités des manches
- Col cheminé avec passepoil en contraste
- Poche arrière avec zip
- Logo rétro réfléchissant avant et arrière
- Empiècements latéraux en contraste



**02500**  
black/white



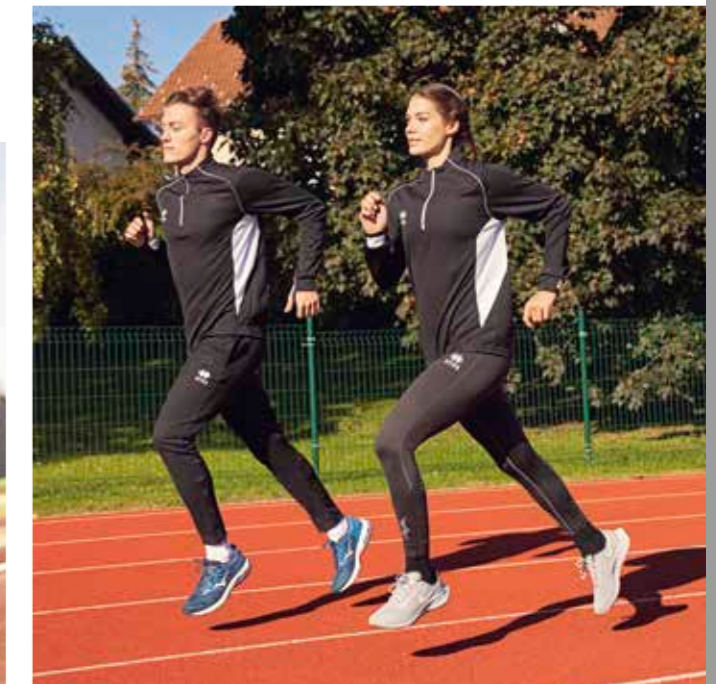
**00500**  
red/white



**01500**  
blue/white



**01900**  
navy/white



## PREMIER EXTRA 3.0



Adult  
PP6P3Z  
S-XXL

Junior  
PP6P4Z  
YXS-XXS-XS

PREMIER 82% polyester 18% elastane - 165 g/mq

MIN. 50 PCS min. 10 per size with multiples of 2



00020  
red

00120  
black

Esempio personalizzato - Example personalised - Exemple personnalisée

## KAREN



MALAGA 80% polyamide 20% elastane  
- 190 g/mq

2023

• Leggings ultra aderente con vita alta piatta per un maggiore confort  
• Cuciture piatte  
• Tasche laterali aderenti portapalline

• Tight-fitting leggings with flat high waist for improved comfort  
• Flat seams  
• Close-fitting ball pockets at the sides

• Legging ultramoulant avec bande de taille haute plate pour un meilleur confort  
• Coutures plates  
• Poches latérales porte-balles adhérentes

Adult  
GPOK0Z  
S-XXL

Junior  
GPOK1Z  
XS



00090  
navy

00120  
black

## WEM



100% NYLON - 90 g/mq

2026

• Cerniera full-zip  
• Inserto in mesh sulla schiena per migliorare la traspirabilità  
• Catarifrangenti posteriori  
• Cerniera in contrasto  
• Logo Erreà catarifrangente sul petto

• Full-zip  
• Mesh insert on the back to improve breathability  
• Back Reflectors  
• Contrasting zipper  
• Reflective Erreà logo on chest

• Zip de haut en bas  
• Pièce en mesh sur le dos pour améliorer la respirabilité  
• Rétro réfléchissantes arrière  
• Zip en contraste  
• Logo Erreà rétro réfléchissant sur la poitrine



03320  
green fluo

03310  
yellow fluo

26520  
transparent

## DWYN

Adult  
EJO10Z  
S-3XL

Junior  
EJO1Z  
XS



100% POLYESTER - 65 g/mq

2026

• Cerniera full-zip  
• Asole per i pollici alle estremità delle maniche  
• Bordini elasticizzati su maniche e fondo  
• Catarifrangenti sul fronte e retro  
• Tasche con zip laterali  
• Inserti in mesh traspirante nelle zone più sensibili al sudore

• Full-zip jacket  
• Thumbholes at the end of sleeves  
• Elasticated borders on sleeves and bottom  
• Reflectors on front and back  
• Zip pockets on sides  
• Inserts in breathable mesh near sweating areas

• Veste zippée  
• Ouvertures pour les pouces aux extrémités des manches  
• Bords élastiques sur manches et bas  
• Éléments rétro réfléchissants à l'avant et à l'arrière  
• Poches zippées latérales  
• Inserts en mesh respirant dans les zones les plus sensibles à la transpiration



04920  
yellow fluo/black



59120  
green fluo/black



00610  
red/black



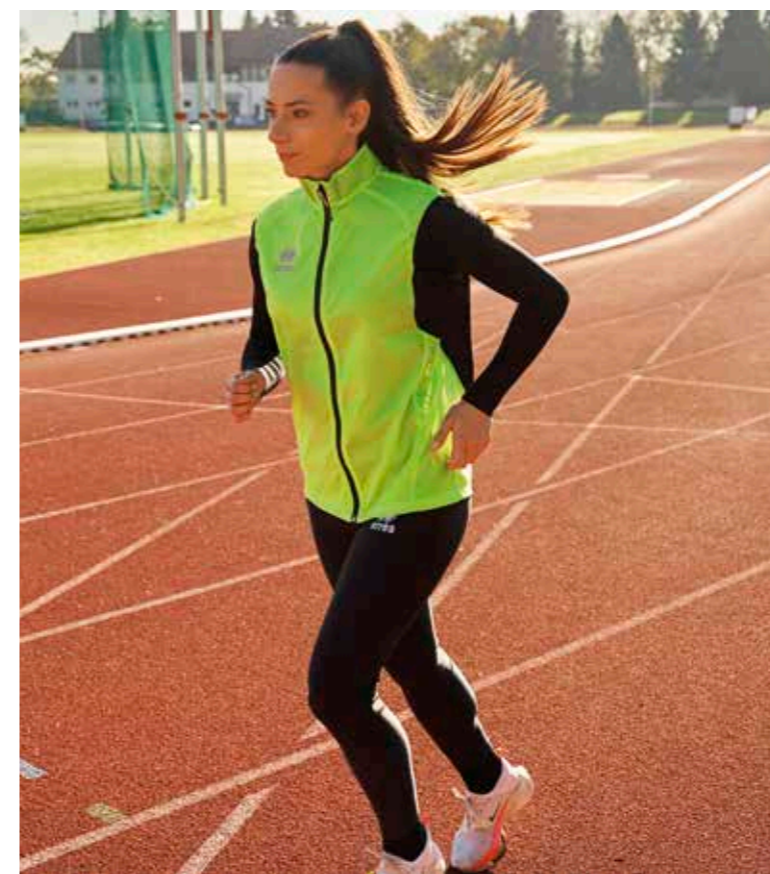
01580  
blue/navy

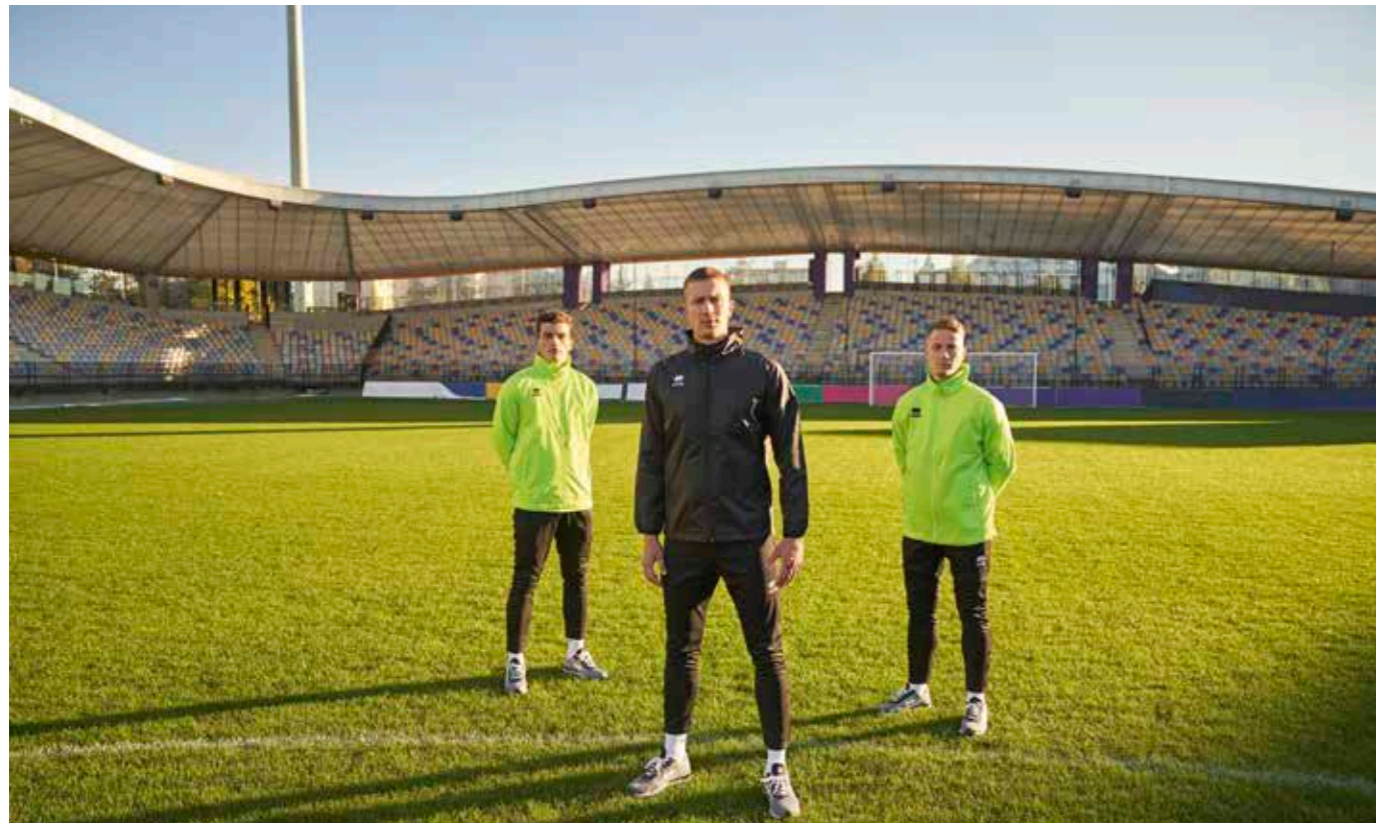


00090  
navy



00120  
black





# PRESSING

Adult **GJ0A0Z** S-3XL  
 Junior **GJ0AIZ** YXS-XXS-XS  
 Kid **GJ0A2Z** 2YXS



B30 100% polyester - 65 g/mq

- Cerniera full-zip a collo alto
- Polsino con binding in contrasto
- Coulisse con fermalaccioli sul fondo
- Tasche laterali antivento
- Insetti catarifrangenti sulle spalle
- Cappuccio interno
- High neck full-zip
- Cuffs with binding in contrasting colour
- Drawstring toggle at the bottom
- Side wind-proof pockets
- Reflectors on the shoulders
- Hideaway hood
- Zip et col haut
- Poignets avec binding en contraste
- Coulisse avec bloqueurs de lacets dans le bas
- Poches latérales coupe-vent
- Pièces rétro réfléchissantes sur les épaules
- Capuche enroulable dans le col



00130  
orange



00030  
yellow



03310  
yellow fluo



03320  
green fluo



00040  
green



00020  
red



00150  
maroon



00090  
navy

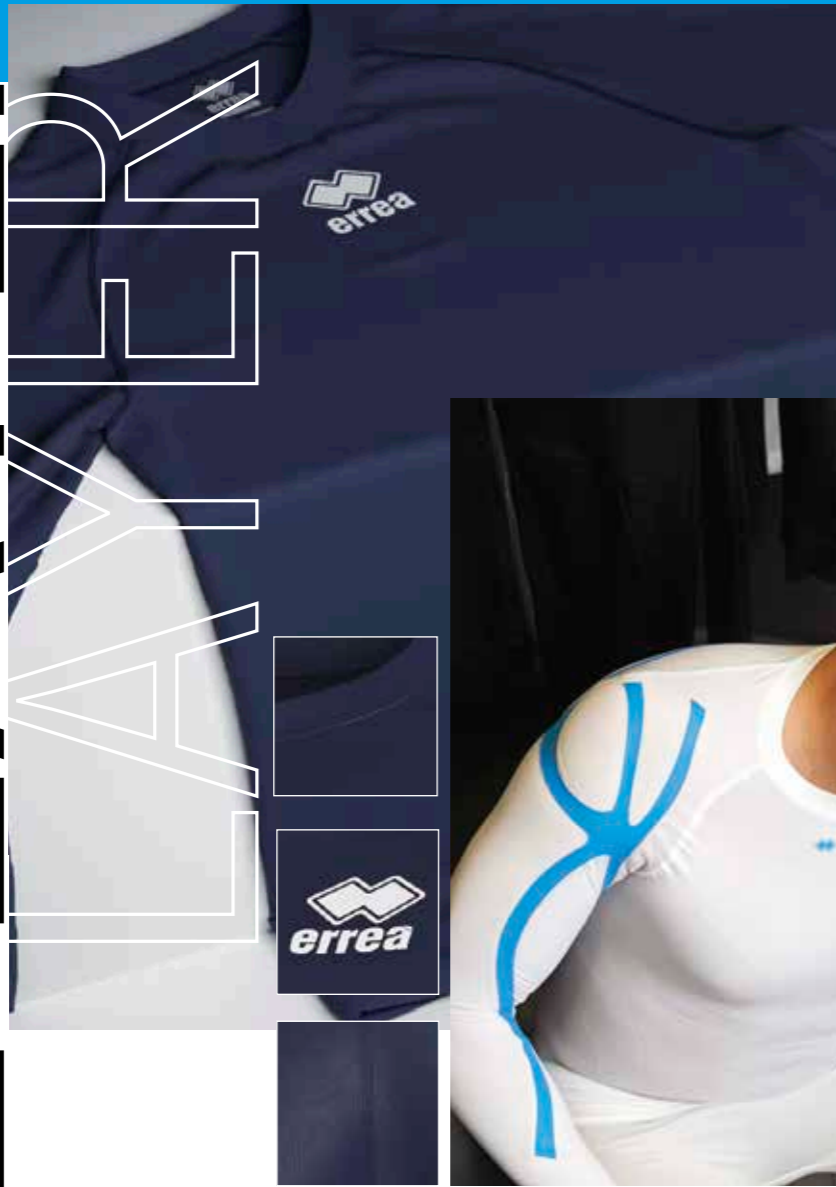


00070  
blue



00120  
black

# BAS LAYER



MIZAR shirt



SAIPH shirt



ACTIVE TENSE LITE shirt



DARYL shirt



DAVOR shirt



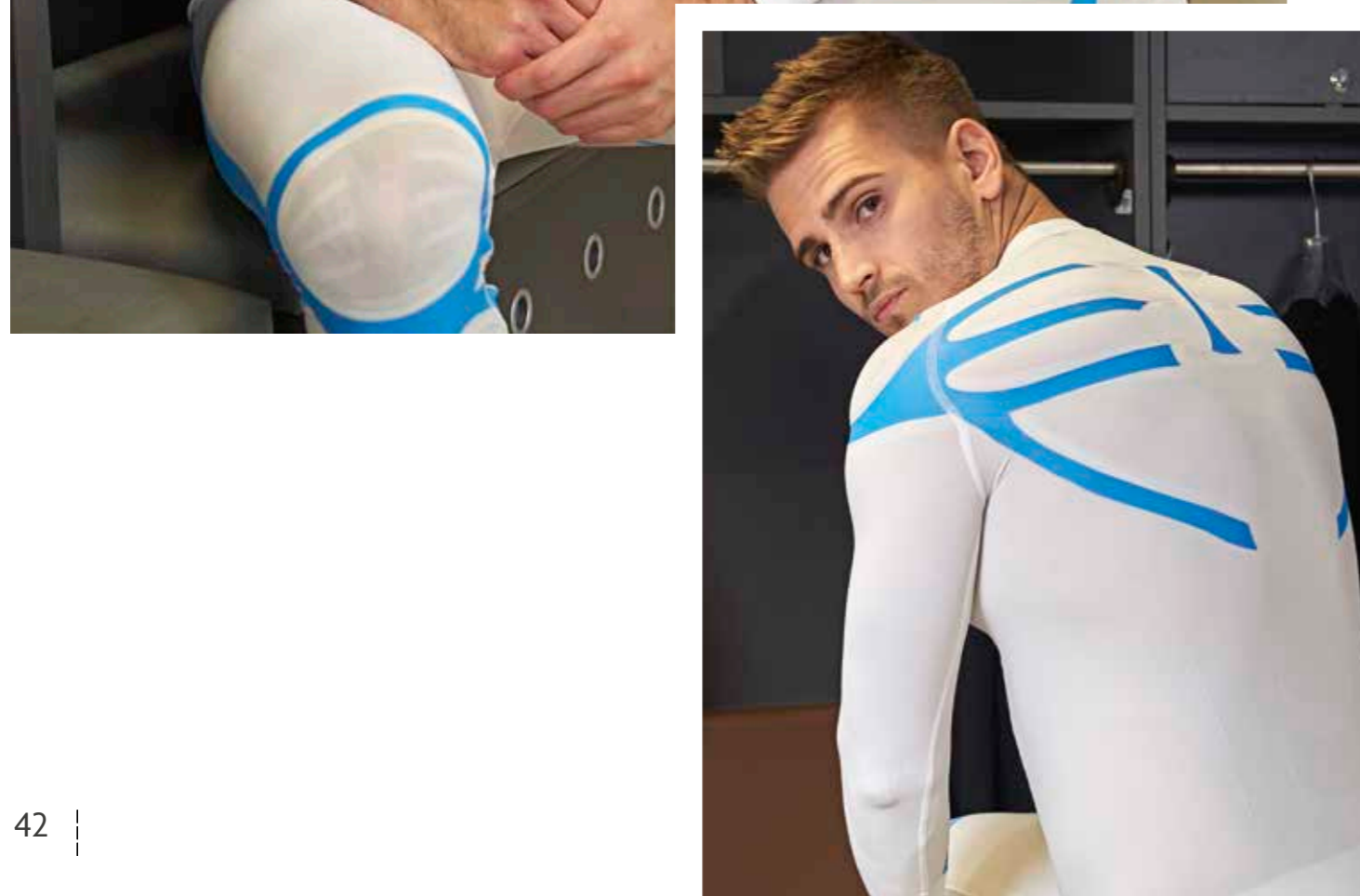
DAVID shirt



ENYA singlet



DARIS shirt



## MIZAR

Adult  
U700L  
S-XXL

Junior  
U701L  
XS



91% POLYAMIDE - 9% ELASTANE



003708  
white/cyan



002510  
black/red



000772  
black/yellow fluo

Fino ad esaurimento scorte  
While stocks last  
Jusqu'à épuisement du stock

- Collo a giro progettata per migliorare postura e rendimento
- Esoscheletro a supporto posturale
- Supporto mirato per i muscoli della parte alta della schiena, articolazioni delle spalle e cuffie dei rotatori
- Supporto extra per gomiti e muscoli delle braccia
- Fasce elastiche interne a sostegno del deltoide, tricipite e trapezio
- Riduzione della vibrazione muscolare
- Traspirante
- Inserimento di fibre di Elastan di alta qualità per mantenere sempre la forma dell'indumento
- Tessuto elastico senza cuciture
- Long-sleeve shirt scientifically engineered to improve posture and performance
- Exoskeleton for postural support.
- Targeted support for the muscles in the upper part of the back, shoulders and rotator cuffs.
- Extra support for elbows and arm muscles.
- Inner elastic bands to support the deltoid, triceps and trapezoid muscles.
- Reduction of muscular vibration
- Breathable
- Insertion of high quality Elasthane fibres for permanent maintenance of the garment's shape
- Seamless elastic fabric
- Maillot à manches longues avec col rond conçu pour améliorer la posture et le rendement
- Exosquelette pour soutien postural
- Soutien ciblé pour les muscles de la partie haute du dos, les articulations des épaules et la coiffe des rotateurs
- Soutien extra pour les coudes et les muscles des bras
- Bandes élastiques internes de soutien du deltoïde, du triceps et du trapèze
- Réduction des vibrations musculaires
- Respirant
- Introduction de fibres Elastan de haute qualité pour toujours maintenir la forme du vêtement.
- Tissu élastique sans coutures

ACTIVE  
TENS3

## CALEYO

Adult  
U708  
S-XXL

Junior  
U709  
XS



003708  
white/cyan



BACK



000772  
black/yellow fluo



91% POLYAMIDE - 9% ELASTANE

- 3/4 che aiuta l'allineamento posturale di fianchi, cosce e dell'articolazione rotulea
- Esoscheletro altamente flessibile
- Supporto mirato per fianchi e ginocchia
- Traspiranti
- Inserimento di fibre di Elastan di alta qualità per mantenere sempre la forma dell'indumento
- Tessuto elastico senza cuciture
- 3/4 trousers that assist the postural training of hips, thighs and patellar articulation
- Highly flexible exoskeleton
- Targeted supports for hips and knees
- Breathable
- Insertion of high quality Elasthane fibres for permanent maintenance of the garment's shape
- Seamless elastic fabric
- Pantalon 3/4 qui aide l'alignement postural des hanches, des cuisses et de l'articulation rotulienne
- Exosquelette très flexible
- Support ciblé pour hanches et genoux
- Respirant
- Introduction de fibres Elastan de haute qualité pour toujours maintenir la forme du vêtement.
- Tissu élastique sans coutures

Fino ad esaurimento scorte  
While stocks last  
Jusqu'à épuisement du stock



# SAIPH

Adult  
**U700**  
S-XXL

Junior  
**U701**  
XS



2026

- Collo a giro progettata per migliorare postura e rendimento
- Esoscheletro a supporto posturale
- Supporto mirato per i muscoli della parte alta della schiena, articolazioni delle spalle e cuffie dei rotatori
- Supporto extra per gomiti e muscoli delle braccia
- Fasce elastiche interne a sostegno del deltoide, tricipite e trapezio
- Riduzione della vibrazione muscolare
- Traspirante
- Inserimento di fibre di Elastan di alta qualità per mantenere sempre la forma dell'indumento
- Tessuto elastico senza cuciture
- Short-sleeve shirt with crew neck designed to improve posture and performance.
- Exoskeleton for postural support.
- Targeted support for the muscles in the upper part of the back, shoulders and rotator cuffs.
- Extra support for elbows and arm muscles.
- Inner elastic bands to support the deltoid, triceps and trapezoid muscles.
- Reduction of muscular vibration
- Breathable
- Insertion of high quality Elasthane fibres for permanent maintenance of the garment's shape
- Seamless elastic fabric
- Maillot à manches courtes avec col rond conçu pour améliorer la posture et le rendement
- Exosquelette pour soutien postural
- Soutien ciblé pour les muscles de la partie haute du dos, les articulations des épaules et la coiffe des rotateurs.
- Soutien extra pour les coudes et les muscles des bras
- Bandes élastiques internes de soutien du deltoïde, du triceps et du trapèze
- Réduction des vibrations musculaires
- Respirant
- Introduction de fibres Elastan de haute qualité pour toujours maintenir la forme du vêtement.
- Tissu élastique sans coutures



Fino ad esaurimento scorte  
While stocks last  
Jusqu'à épuisement du stock



# ARRIUS

Adult  
**U705**  
S-XXL

Junior  
**U706**  
XS



2026

- Progettato per sostenere quadricipiti, flessori e glutei
- Esoscheletro a supporto posturale.
- Ridotta vibrazione muscolare
- Traspiranti
- Inserimento di fibre di Elastan di alta qualità per mantenere la forma dell'indumento
- Tessuto elastico senza cuciture
- Targeted support for quadriceps, flexors and glutes.
- Exoskeleton for postural support.
- Reduced muscular vibration.
- Breathable.
- Insertion of high quality Elasthane fibres for permanent maintenance of the garment's shape
- Seamless elastic fabric
- Soutien ciblé pour quadriceps, fléchisseurs et fesses
- Exosquelette de soutien postural.
- Vibrations musculaires réduites
- Respirant
- Introduction de fibres Elastan de haute qualité pour maintenir la forme du vêtement.
- Tissu élastique sans coutures



Fino ad esaurimento scorte  
While stocks last  
Jusqu'à épuisement du stock



## ACTIVE TENSE LITE

Adult  
**UM010C**  
S-XXL

Junior  
**UM011C**  
XS



94% POLYAMIDE - 6% ELASTANE



00120  
black



00010  
white

- Maglia collo a giro, dotata di zone a tensione differenziata ed esoscheletro in resina
- L'esoscheletro in resina si concentra sulla parte superiore del corpo con lo scopo di stabilizzare le spalle e migliorare la postura
- Le fasce elastiche interne sono studiate e realizzate per sostenere il deltoide e il trapezio
- Le zone a tensione differenziata grazie ai diversi attriti determinano effetti stabilizzatori sui muscoli e sulle articolazioni

- Short-sleeve shirt crew neck with differentiated tension zones and exoskeleton in resin
- The resin exoskeleton is positioned and concentrated on the upper part of the body for the purpose of stabilizing the shoulders and improving posture
- The inner elastic bands are designed and produced to support the deltoide and trapezoid muscles
- The differentiated tension zones, because of different frictions, have stabilizing effects on the muscles and joints

- Maillot col rond à manches courtes avec des zones à tension différenciée et un exosquelette en résine
- L'exosquelette en résine est positionné et se concentre sur la partie supérieure du corps dans le but de stabiliser les épaules et d'améliorer la posture
- Les bandes élastiques internes ont été étudiées et réalisées pour soutenir le deltoide et le trapèze
- Les zones à tension différenciée grâce aux différents frottements déterminent des effets stabilisateurs sur les muscles et sur les articulations

**ACTIVE TENSE**

## ACTIVE TENSE LITE

Adult  
**UPOGOZ**  
S-XXL

Junior  
**UPOGIZ**  
XS



00120  
black



BACK



00010  
white



94% POLYAMIDE - 6% ELASTANE

- Dotato di zone a tensione differenziata ed esoscheletro in resina
- L'esoscheletro in resina si concentra sui principali muscoli della coscia per migliorarne la funzionalità
- Le fasce elastiche interne sono realizzate per sostenere i quadricipiti e i flessori e creano un importante supporto alle fasce e alla muscolatura degli adduttori
- La vibrazione muscolare risulta sensibilmente ridotta

- Bermudas with differentiated tension zones and exoskeleton in resin
- The resin exoskeleton is concentrated on the main muscles of the thigh to improve their function
- The inner elastic bands are provided to support the quadriceps and flexors, and create an important support to the muscle fibres of the adductors
- Muscular vibration is noticeably reduced

- Bermuda avec des zones à tension différenciée et un exosquelette en résine.
- L'exosquelette en résine se concentre sur les principaux muscles de la cuisse pour en améliorer la fonctionnalité.
- Les bandes élastiques internes, réalisées pour soutenir les quadriciceps et les fléchisseurs, créent un important soutien aux bandes et à la musculature des adducteurs.
- Les vibrations musculaires sont sensiblement réduites





# DENIS

Adult  
UPOB0Z  
S/M-L/XL-XXL

Junior  
UPOBIZ  
XS



85% POLYAMIDE 10% POLYESTER 5% ELASTANE

- Alta traspirabilità
- Rapido assorbimento del sudore
- Effetto "second skin"
- Tecnologia seamless
- Isolamento termico
- Estrema leggerezza
- Made in Italy

- Optimum breathability
- Rapid sweat absorption
- "Second skin" effect
- Seamless technology
- Thermal insulation
- Extreme lightness
- Made in Italy

- Grande respirabilité
- Absorption rapide de la transpiration
- Effet « deuxième peau »
- Technologie sans coutures
- Isolation thermique
- Extrême légèreté
- Made in Italy



00010 white, 00030 yellow, 00130 orange, 00020 red, 00150 maroon, 00040 green, 00070 blue, 00090 navy, 00120 black

# DAMIAN

Adult  
UPOC0Z  
S/M-L/XL-XXL

Junior  
UPOCIZ  
YXS-XXS-XS



85% POLYAMIDE 10% POLYESTER 5% ELASTANE

- Alta traspirabilità
- Rapido assorbimento del sudore
- Effetto "second skin"
- Tecnologia seamless
- Isolamento termico
- Estrema leggerezza
- Made in Italy

- Optimum breathability
- Rapid sweat absorption
- "Second skin" effect
- Seamless technology
- Thermal insulation
- Extreme lightness
- Made in Italy

- Grande respirabilité
- Absorption rapide de la transpiration
- Effet « deuxième peau »
- Technologie sans coutures
- Isolation thermique
- Extrême légèreté
- Made in Italy



00090 navy, 00120 black

# DEREK

Adult  
GPOS0Z  
S/M - L/XL - XXL/3XL

Junior  
GPOSIZ  
YXS-XXS/XS



90% POLYESTER - 10% ELASTANE

- Elasticizzati
- Elastico in vita
- Fondo con orlo

- Stretch fabric
- Elastic waistband
- Hemmed bottom

- Tissu élastique
- Élastique à la taille
- Bas avec ourlet



00090 navy, 00120 black

# DARIS

Adult  
FMOB0L  
S/M - L/XL - XXL/3XL

Junior  
FMOBIL  
YXS-XXS/XS



90% POLYESTER - 10% ELASTANE

- Manica raglan
- Collo a giro
- Ideale per il periodo invernale
- Isolamento termico

- Raglan sleeve
- Crew neck
- Ideal for wintertime
- Thermal insulation

- Manches raglan
- Ras du cou
- Idéal pour la période hivernale
- Isolation thermique



00010 white, 00150 maroon, 00020 red, 00130 orange, 00030 yellow



00040 green, 00070 blue, 00090 navy, 00120 black, 32120 anthracite melange

# DAWE

Adult  
FPOB0Z  
S/M - L/XL - XXL/3XL

Junior  
FPOBIZ  
YXS-XXS/XS



90% POLYESTER - 10% ELASTANE

- Elasticizzati
- Elastico in vita

- Elasticated
- Elastic waistband

- Élasticité
- Ceinture élastique



00010 white, 00150 maroon, 00020 red, 00130 orange, 00030 yellow, 00040 green, 00070 blue, 00090 navy, 00120 black, 32120 anthracite melange

# COMFORT

Adult  
**A426**  
ONE SIZE

**DEKO**  
STANDARD  
TOP  
COMFORT  
2026  
80% COTTON 16% NYLON 4%  
ELASTANE

- Altezza caviglia
- Zona traspirante sul collo del piede
- Ankle socks
- Breathable zone on instep
- Hauteur cheville
- Zone respirante sur le coup-de-pied



**000028**  
white/navy



**000250**  
black/white

# TRAINING

Adult  
**A428**  
M-L-XL

Junior  
**A429**  
XS

**DEKO**  
STANDARD  
TOP  
COMFORT  
2026  
55% COTTON 40% NYLON 5%  
ELASTANE

- Altezza polpaccio
- Zona traspirante sul polpaccio
- Calf-length socks
- Breathable zone on calf
- Chaussettes hauteur mollet
- Zone respirante sur le mollet



**000031**  
white/black



**000190**  
navy/white

SOCKS SIZE
XS: 31/34
M: 35/38
L: 39/42
XL: 43/47

# SKIP

Adult  
**A422**  
M-L-XL

Junior  
**A423**  
XS

**DEKO**  
STANDARD  
TOP  
COMFORT  
2026  
80% COTTON 16% NYLON 4%  
ELASTANE

- Calza corta in cotone
- Zona traspirante sul collo del piede
- Cotton ankle socks
- Breathable zone on instep
- Chaussettes bas en coton
- Zone respirante sur le cou-de-pied



**000028**  
white/navy



**000190**  
navy/white



**000250**  
black/white

SOCKS SIZE
XS: 31/34
M: 35/38
L: 39/42
XL: 43/47

# JUMP

Adult  
**FA2R0Z**  
M-L-XL

**DEKO**  
STANDARD  
TOP  
COMFORT  
2024  
50% COTTON 50% ELASTANE

- Calza corta in cotone
- Zona traspirante sul collo del piede
- Cotton ankle socks
- Breathable zone on instep
- Chaussettes bas en coton
- Zone respirante sur le cou-de-pied



**00280**  
white/navy



**02500**  
black/white

SOCKS SIZE
M: 35/38
L: 39/42
XL: 43/47

# ALPHA

Adult  
**FC0A0Z**  
M-L-XL

Junior  
**FC0A1Z**  
XS

**DEKO**  
STANDARD  
TOP  
COMFORT  
2026  
80% COTTON 20% ELASTANE

- Compressione sull'arco plantare
- Tallone e punta rinforzati
- Compression on arch of the foot
- Reinforced heel and toe
- Compression sur voûte plantaire
- Talon et pointe renforcés



**00280**  
white/navy

SOCKS SIZE
XS: 31/34
M: 35/38
L: 39/42
XL: 43/47

# REFLECT

65% POLYESTER 35% COTTON

2026

T1307



000002  
red



000001  
white



000007  
blue



000009  
navy



000012  
black

# JUMAR EVO

100% POLYESTER (MICRO PILE)

2026

Adult  
GAIGOZ  
10  
PCS X PACK

Junior  
GAIGIZ



00120  
black



03320  
green fluo



35990  
cyan



00020  
red



00090  
navy

# POGGIAPIEDI

T0770  
Ø CM 64

2026



# KNIK

errea  
MADE IN ITALY  
87% POLYAMIDE - 12% ELASTANE  
1% POLYPROPYLENE

2026

Adult  
U655  
S/M-L/XL



000009  
navy



000007  
blue



000001  
white



000003  
yellow



000013  
orange



000002  
red



000004  
green



000012  
black



000015  
maroon

Fino ad esaurimento scorte  
White stocks last  
Jusqu'à épuisement du stock

# NOMEN

2026

FA1FOZ  
750 ML



04920  
yellow fluo/black



# JULE

100% ACRYLIC

2026

Adult  
FA0HOZ  
10  
PCS X PACK

Junior  
FA0HIZ



02000  
navy/grey



59120  
green fluo/black



35710  
cyan/black



00600  
red/grey



02000  
navy/grey

# BAHIA ID

GA1AOZ  
36-46

2026



71610  
royal/after eight/navy

# SPLASH

2026

FA0Z0Z  
36-46



01900  
navy/white

# BLUMM

2025

600D POLYESTER

GAIKOZ  
43 LT



32540  
anthracite/black

# BARRIE

2025

600D POLYESTER

GAOGOZ  
17 LT



32540  
anthracite/black



# MERCURY

2026

600D POLYESTER

T0347  
38 LT



000007  
blue



000009  
navy



000015  
maroon



000012  
black



000004  
green



000002  
red



25735  
HCM12

# LEN

2026

600D POLYESTER

EAIEOZ  
7 LT



02600  
black/grey



02000  
navy/grey

# CLIO

2026

600D POLYESTER

EAIGOZ



00120  
black



# BENGALA

2025

600D POLYESTER

GAOF0Z  
24 LT



00090  
navy



00120  
black



04920  
yellow fluo/black



59120  
green fluo/black

# BENSON TROL

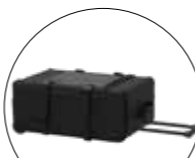
2025

600D POLYESTER

GAOH0Z  
32 LT



32540  
anthracite/black



# THOR

2026

600D POLYESTER

EA3D0Z  
25 LT



00090  
navy



00120  
black



08180  
black/green fluo



07830  
black/orange fluo



07720  
black/yellow fluo

# BRAVE

2025

600D POLYESTER

GAOKOZ  
29 LT



01900  
navy/white



02500  
black/white

# BAJA GRANDE

2025

600D POLYESTER

GA080Z  
64 LT



32540  
anthracite/black

# BAJA MEDIA

2025

600D POLYESTER

GA0C0Z  
30 LT



01900  
navy/white

01500  
blue/white



02500  
black/white

# BOOKER

2025

600D POLYESTER

GA010Z  
33 LT



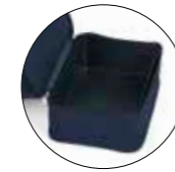
32540  
anthracite/black



01500  
blue/white



01900  
navy/white



25735  
H CM 12



02500  
black/white

# LYNOS

2026

600D POLYESTER

EA1A0Z  
33 LT



01920  
navy/yellow



01580  
blue/navy



02000  
navy/grey



25735  
H CM 12



01910  
navy/red



02600  
black/grey

# BAJA TROL

2025

600D POLYESTER

GA0D0Z  
64 LT



32540  
anthracite/black

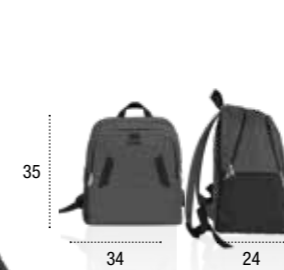


# BOOKER KID

2025

600D POLYESTER

GA0J0Z  
23 LT



32540  
anthracite/black



01500  
blue/white



01900  
navy/white



02500  
black/white

# LYNOS KID

2026

600D POLYESTER

EA1B0Z  
23 LT



01920  
navy/yellow



01580  
blue/navy



02000  
navy/grey



01910  
navy/red



02600  
black/grey

# BROOKLYN

2025

600D POLYESTER

GA0E0Z



# LANCE

2026

600D POLYESTER

EA1C0Z



# SIRIO

2026

100% POLYESTER

FA1T0Z



# LUIS

2026

100% POLYESTER

EA1F0Z



# LARES

2026

600D POLYESTER

EA1D0Z  
10 LT



# COMPUTER BAG 09

2026

600D POLYESTER PVC

T0378  
14 LT



# FOLDER 3.0

2026

600D POLYESTER

FA1B0Z





# FULL\_CUSTOM - Competition



## UN CAPO UNICO REALIZZATO PER LA TUA SOCIETÀ

- 1 Identificazione del modello, tessuto e vestibilità con cui realizzare il capo personalizzato.
- 2 Realizzazione dei disegni da parte dell'ufficio Design Erreà.
- 3 Confezione del capo personalizzato completo di eventuali sponsor e nomi/numeri.

## AN ORIGINAL, ONE-OFF GARMENT PRODUCED FOR YOUR ORGANIZATION.

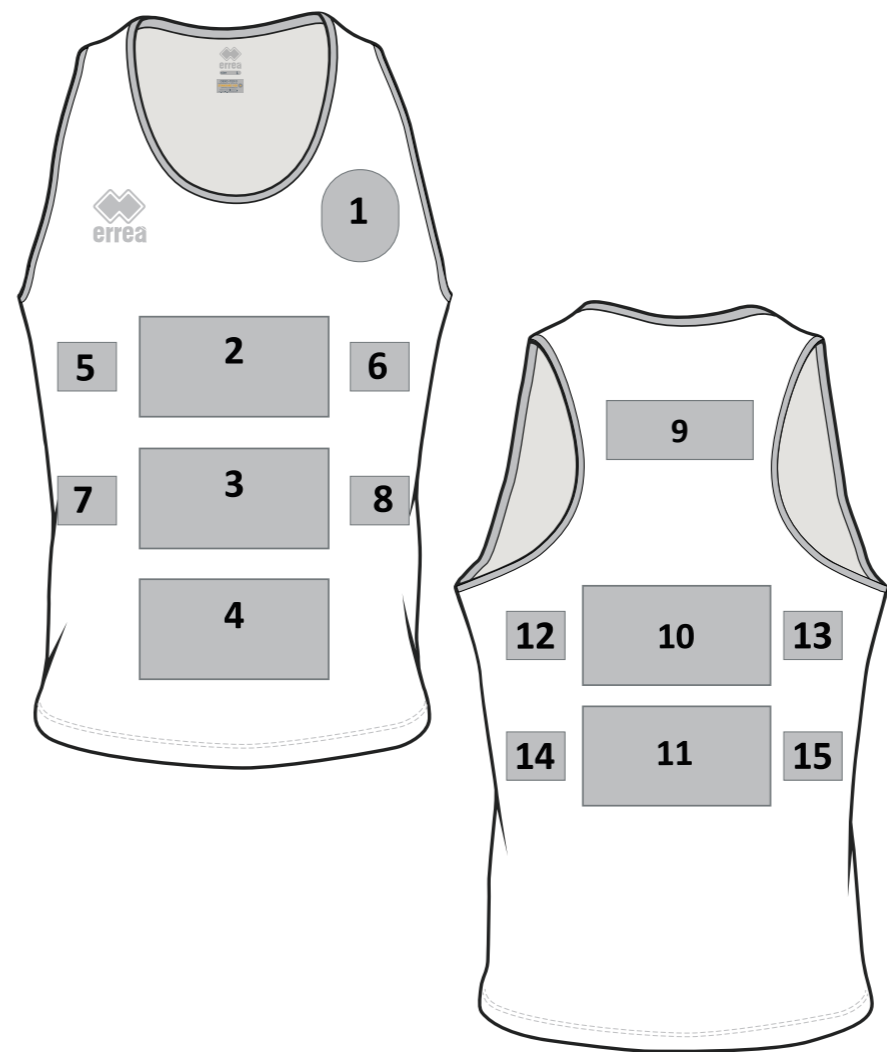
- 1 Identification of the model, fabric and fit with which to produce your customized garment.
- 2 Development of designs by the Erreà Design Office.
- 3 Manufacture of the customized garment complete with possible sponsors and names/numbers.

## UN ARTICLE UNIQUE RÉALISÉ POUR VOTRE SOCIÉTÉ.

- 1 Identification du modèle, du tissu et de la ligne à partir desquels l'article personnalisé sera réalisé.
- 2 Réalisation des dessins par le Bureau Design d'Erreà.
- 3 Confection de l'article personnalisé, avec indication d'éventuels sponsors ou noms/numéros.



# FULL\_CUSTOM - Athletics



### FRONT

- 1 BADGE (h x w cm)
- 2 LOGO (h x w cm)
- 3 LOGO (h x w cm)
- 4 LOGO (h x w cm)
- 5 LOGO (h x w cm)
- 6 LOGO (h x w cm)
- 7 LOGO (h x w cm)
- 8 LOGO (h x w cm)

### BACK

- 9 LOGO (h x w cm)
- 10 LOGO (h x w cm)
- 11 LOGO (h x w cm)
- 12 LOGO (h x w cm)
- 13 LOGO (h x w cm)
- 14 LOGO (h x w cm)
- 15 LOGO (h x w cm)

## CONSIGLI PRATICI

1. Invia eventuali grafiche in formato vettoriale.
2. Invia loghi in formato .pdf/.ai/.eps
3. Possibilità di inserire nomi/numeri all'interno dei fogli di stampa. Invia le indicazioni (taglia/nome/numero) al momento della conferma del disegno.

## RECOMMENDATIONS

1. Send any graphic designs in vector format.
2. Send logos in .pdf/.ai/.eps
3. You can also enter names/numbers on print sheets. Send the information (size/name/number) at the time of confirming the design.

## CONSEILS PRATIQUES

1. Envoi d'éventuels graphismes au format vectoriel.
2. Envoi des logos au format .pdf/.ai/.eps
3. Possibilité d'entrer des noms/numéros dans les feuilles d'impression. Envoi des indications (taille/nom/numéro) lors de la confirmation du dessin.





**KONNOR**

MIN. 16 PCS MIN. 4 PER SIZE WITH MULTIPLES OF 2  
 SENZA INSERTI - WITHOUT INSERTS - SANS INSERTS  
 CUCITURE PIATTE - FLAT SEAMS - COUTURES PLATES  
 adult - PMLC3C  
 junior - PMLC4C  
 ○ UTILITY 100% POLYESTER - 145 g/mq



**KONNOR** WOMAN

MIN. 16 PCS MIN. 4 PER SIZE WITH MULTIPLES OF 2  
 SENZA INSERTI - WITHOUT INSERTS - SANS INSERTS  
 CUCITURE PIATTE - FLAT SEAMS - COUTURES PLATES  
 adult - PMLD3C  
 junior - PMLD4C  
 ○ UTILITY 100% POLYESTER - 145 g/mq



**JADE** MANICOTTO

MIN. 50 PCS min. 10 per size with multiples of 2  
 Adult PA1H3Z S/M - L/XL  
 Junior PA1H4Z XS

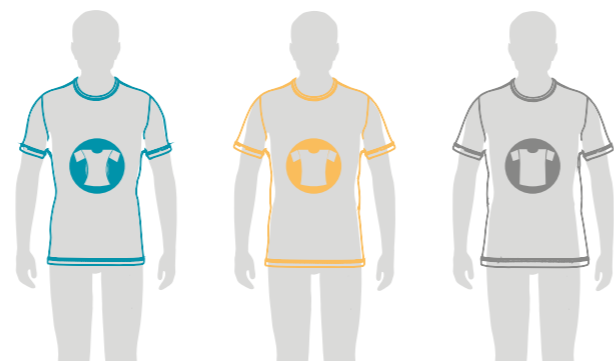


# SIZE CHART

Se sei al limite tra due taglie, ordina quella immediatamente più piccola per una vestibilità più aderente o quella immediatamente più grande per una vestibilità più comoda.

If you are in between sizes, order the smaller size for a snugger fit or the larger one if you prefer a more comfortable fit.

Si vous êtes juste entre deux tailles, commandez la plus petite pour une coupe plus ajustée ou la plus grande pour une coupe plus confortable.



VESTIBILITÀ ADERENTE  
VERY CLOSE FITTING  
VESTIBILITÄ ADHERENTE

VESTIBILITÀ SEMI-ADERENTE  
CLOSE FITTING  
VESTIBILITÄ SEMI-ADHERENTE

VESTIBILITÀ NORMALE  
NORMAL FITTING  
VESTIBILITÄ NORMALE



## SIZE GUIDE

Misura la circonferenza della tua gamba 15 cm sotto la tua rotula.

Measure the circumference of your leg at a point 15 cm below the middle of your kneecap.

Mesure ton tour de jambe 15 cm au-dessous de la rotule.

KNEEPAD SIZING CHART		
	cm	inches
XS	30-33	12-13
S	33-35	13-13,7
M	35-37	13,7-14,5
L	37-40	14,5-15,7
XL	40-45	15,7-17,7



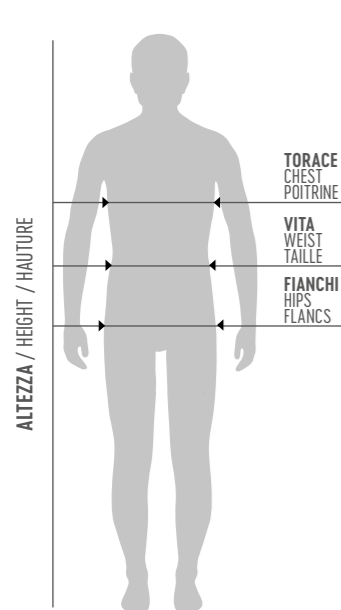
SOCKS SIZING CHART							
SIZE	KID	JR	AD	XS	M	L	XL
EU	35/38	39/42	42/46	31/34	35/38	39/42	43/47
USA	3.5/6	7/9	9/12	1/3	3.5/6	7/9	10/13
UK	2.5/5	6/8	8/11	12.5/2	2.5/5	6/8	9/12

## SIZE ENERGY GRIP:

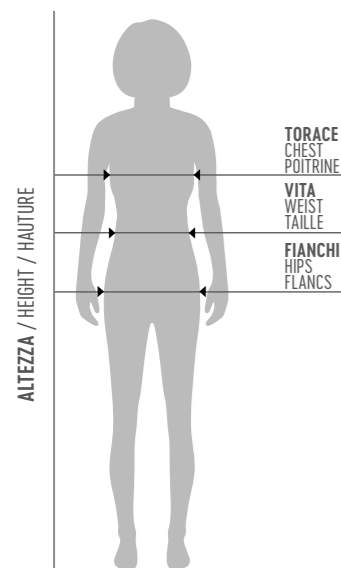
S:35/38	M:39/41	L: 42/44	XL: 45/47
---------	---------	----------	-----------



SHOES SIZING CHART														
EU	35	36	37	38	39	40	41	42	43	44	45	46	47	48
USA	3.5	4	5	6	7	7.5	8	9	10	10.5	11	12	13	14
UK	2.5	3	4	5	6	6.5	7	8	9	9.5	10.5	11	12	13



TAGLIE UOMO / SIZES MAN / TAILLES HOMME										
	EU	IT	TORACE CHEST POITRINE		VITA WAIST TAILLE		FIANCHI HIPS FLANCS		ALTEZZA HEIGHT HAUTEUR	
			cm	inches	cm	inches	cm	inches	cm	inches
KID	3YXS	22-24							98-108	39-42.5
	2YXS	26-28							110-120	42.5-47.2
JUNIOR	YXS	30-32	64-72	25-28	54-60	21.26-24	66-74	26-29	122-132	48-52
	XXS	34-36	72-80	28-31	60-66	24-26	74-82	29-32	134-144	52.8-56.7
	XS	38-40	80-88	31-35	66-72	26-28	82-90	32-35	146-156	57.5-61.4
ADULT	S	42-44	90-94	35-37	72-76	28-30	92-96	36-38	167-172	65.7-67.7
	M	46-48	94-98	37-39	76-80	30-31	96-100	38-39.4	173-178	68.1-70.1
	L	50-52	98-102	39-40.2	80-84	31-33	100-104	39.4-40.9	179-184	70.5-72.4
	XL	54	102-106	40.2-41.7	84-88	33-35	104-108	40.9-42.5	185-190	72.8-74.8
	XXL	56	106-110	41.7-43.3	88-92	35-36	108-112	42.5-44.1	191-196	75.2-77.2
	3XL	58	110-114	43.3-44.9	92-94	36-37	112-116	44.1-45.7	197-202	77.6-79.5
	4XL	60	114-118	44.9-46.5	94-96	37-38	116-120	45.7-47.2	203-208	79.9-81.9



TAGLIE DONNA / SIZES WOMAN / TAILLES FEMME										
	EU	IT	TORACE CHEST POITRINE		VITA WAIST TAILLE		FIANCHI HIPS FLANCS		ALTEZZA HEIGHT HAUTEUR	
			cm	inches	cm	inches	cm	inches	cm	inches
KID	3YXS	24-26							98-108	39-42.5
	2YXS	26-28							110-120	42.5-47.2
JUNIOR	YXS	30-32	64-72	25-28	54-60	21.26-24	66-74	26-29	122-132	48-52
	XXS	34-36	72-80	28-31	60-66	24-26	74-82	29-32	134-144	52.8-56.7
	XS	38-40	80-88	31-35	66-72	26-28	82-92	32-36	146-156	57.5-61.4
ADULT	S	42-44	84-88	33-35	68-72	27-28	92-96	36-38	164-168	64.6-66.1
	M	46-48	88-92	35-36	72-76	28-30	96-100	38-39.4	169-173	66.5-68.1
	L	50-52	92-96	36-38	76-80	30-31	100-104	39.4-40.9	174-178	68.5-70.1
	XL	54	96-100	38-39.4	80-84	31-33	104-108	40.9-42.5	179-183	70.5-72
	XXL	56	100-104	39.4-40.9	84-88	33-35	108-112	42.5-44.1	184-188	72.4-74
	3XL	58	104-108	40.9-42.5	88-92	35-36	112-116	44.1-45.7	189-193	74.4-76
	4XL	60	108-112	42.5-44.2	92-96	36-38	116-120	45.7-47.2	194-198	76.4-78

## GUANTI / GLOVES / GANTS

Per prendere la misura giusta della larghezza della mano, segui esattamente il disegno illustrativo.

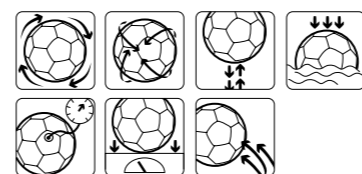
Follow the drawing to measure the hand's width in the proper way and use the chart to figure out which size best fits your hand.

Pour mesurer la largeur de la main suivre le dessin et le tableau.



GLOVES SIZING CHART								
	7,5	8	8,5	9	9,5	10	10,5	11
	8,2 cm	8,5 cm	8,8 cm	9,1 cm	9,4 cm	9,7 cm	10 cm	10,3 cm

## PALLONI/ BALLS / BALLON



Terreni asciutti  
Dry grounds



Terreni con neve  
Ground covered with snow



Terreni con fango e pioggia  
Muddy and wet grounds



Indoor



Terreni con erba sintetica  
Artificial pitch

# WASHING AND GARMENT CARE

## IT

Per garantire i più alti standard qualitativi dei capi, Erreà controlla e verifica scrupolosamente tutti i tessuti impiegati.

Le fibre naturali del cotone, i tessuti tecnici e le felpe riescono a mantenere inalterate nel tempo le loro caratteristiche e il loro comfort se trattate con la massima cura.

Vi consigliamo pertanto di leggere con attenzione i consigli d'uso, di lavaggio e di manutenzione riportati sulle etichette dei capi.



L'etichetta con i consigli di lavaggio è specifica per ogni indumento. Erreà garantisce che potete seguire i suoi consigli alla "lettera".

The washing instructions label is specific for every garment. Please follow it carefully.

L'étiquette pour les conseils de lavage est spécifique pour chaque article. Erreà assure que ses conseils sont à suivre "à la lettre".

## EN

To guarantee the highest possible quality standards for all garments, Erreà scrupulously control all the fabrics utilised in production.

The natural cotton, technical fabrics and sweatshirt materials will maintain their characteristics and comfort over time, if cared for correctly.

We therefore ask that you read carefully, the washing and maintenance instructions found on the label of each garment.

## LAVAGGIO / WASHING / LAVAGE



Lavare in lavatrice (max. 30°)  
Washing temperature max 30°  
Lavage machine (max 30°)

## CANDEGGIO / BLEACHING / BLANCHIMENT



Non utilizzare candeggina  
Do not bleach  
Ne pas utiliser de produits blanchissants

## LAVAGGIO A SECCO / DRY CLEANING / NETTOYAGE A SEC



Utilizzare i solventi in uso (salvo la trielina)  
Do not use trichloroethylene  
Utiliser les solvants en commerce sauf le trichloréthylène



Non lavare a secco  
Do not dry-cleaning  
Ne pas nettoyer à sec

## ASCIUGATURA / DRYING / SECHAGE



Non utilizzare l'asciugatrice  
Do not tumble dry  
Ne pas utiliser le séchoir

## STIRATURA / IRONING / REPASSAGE



Stirare a temperatura dolce senza vapore (110°C)  
Iron at mild temperature without steam (110°C)  
Repasser à température douce sans vapeur



Non stirare  
No steam  
Ne pas repasser

# DIAMANTIS

Look



DIAMANTIS shirt DIVINA singlet DOMINIC polo DARYA polo



DRAGOS top DEXTER top DONOVAN top DIANA top DAVIS top

shirt colours

# CURTIS

Look



CURTIS shirt CORINNE shirt CARRY singlet CLARK polo



CARMEN polo CHRISTOPHER top CRISTINE top CLANCY top CHARLES top

shirt colours

# CLASSIC

Look



EVERTON shirt MARVIN shirt LENNOX shirt MARION shirt ALISON singlet



EVO polo EVO LADIES polo JACOB top KURT top MADISON top

shirt colours

# BRANDON

Look



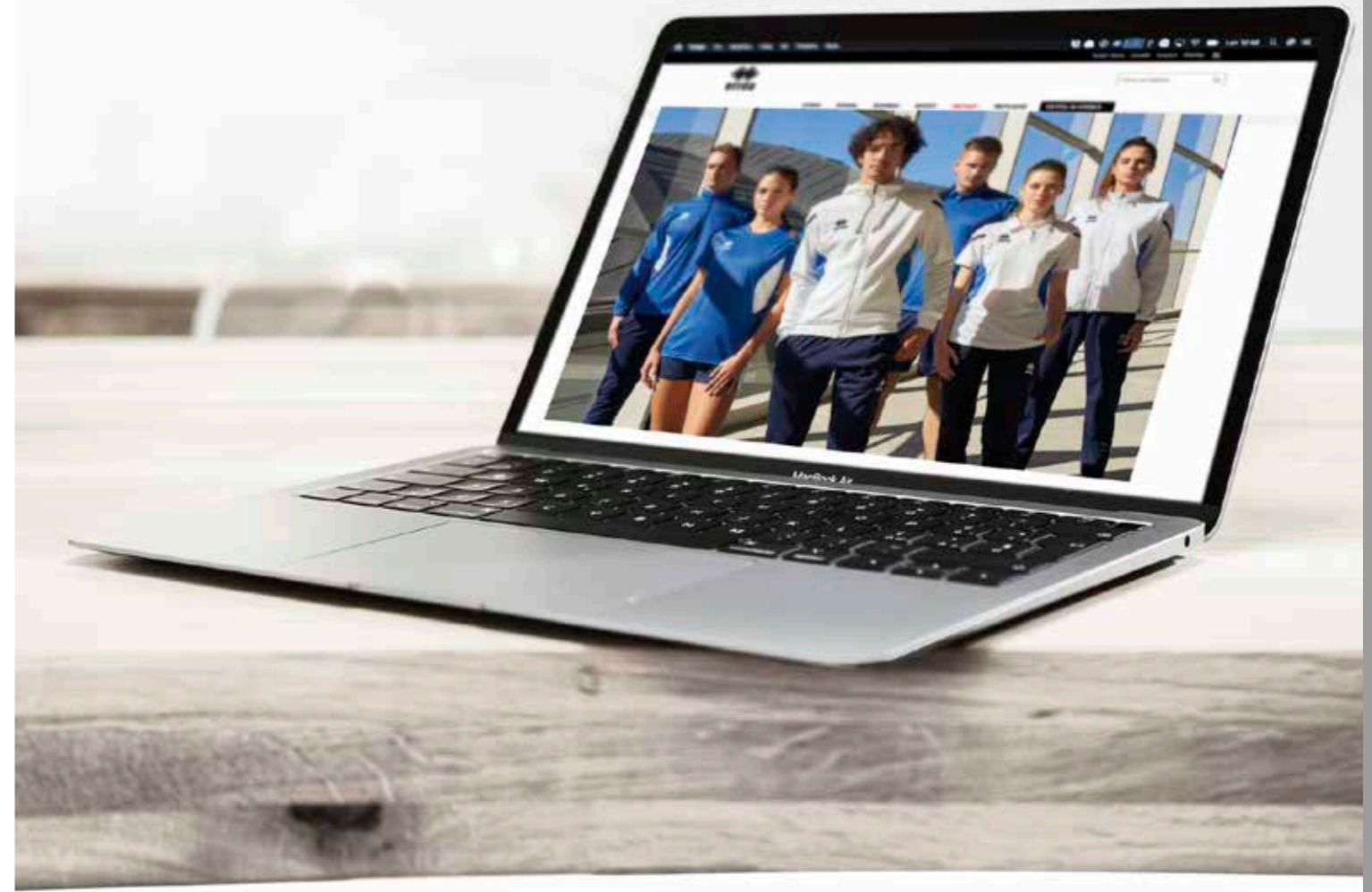
BRANDON shirt BARNEY short BESSY shirt BOB polo



BONNIE polo BEN top BEA top BUDDY top BLAKE top

shirt colours

# NOTE



Trovi il catalogo completo nell'area download  
Find the complete catalogue in the Download area  
Vous trouvez le catalogue complet dans la section download

**errea.com**



**errea**

**ERREÀ SPORT S.p.A.**

Via G. Di Vittorio, 2/1

43056 S. Polo di Torrile (Parma) - Italy

**errea.com**

info@errea.it

PRODUTTORI DAL 1988

CERTIFIED QUALITY  
MANAGEMENT SYSTEM



UNI EN ISO 9001:2015



2023  
COLLECTION