



Solenoid valve 2/2 way N.C. With pilot control - manual operation and closing velocity control

21WN5KB190-MR

÷

21WN9KB500-MR

PRESENTATION:

S.V. with pilot control for interception of fluids compatible with the construction materials.

A minimum operational pressure of 0,2 bar is required.

The materials used and the tests carried out ensure maximum reliability and duration.

USE: Automation
Heating

PIPES: 3/4 NPT – 2 NPT

COILS: 8W - Ø 13
BDA - BSA 155°C (class F)
BDV 180°C (class H)

**COIL HOUSING AND COIL FORMER MATERIAL ARE
MADE BY 100% VIRGIN MATERIAL.**

Max. allowable pressure (PS)

3/4 NPT – 1 NPT 25 bar

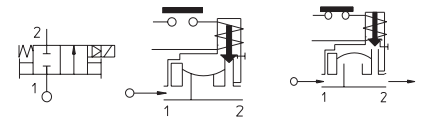
1 1/4 NPT – 2 NPT 16 bar

Ambient temperature:

See coils catalogue page for its compatibility.



Gaskets	Temperature		Medium
B =NBR (nitrile rubber)	- 10°C	+ 90°C	Air, inert gas, water
E =EPDM (ethylene-propylene)	- 10°C	+140°C	Water, low pressure steam
V =FKM (fluoroelastomer)	- 10°C	+140°C	Mineral oils (2°E), gasoline, gas oil
F =H-NBR (hydrogenated nitrile)	- 30°C	+130°C	Air, inert gas, water R 134a, R 404a



For seals other than NBR replace the letter "B" with the ones corresponding to the other seals. E.I. 21WN5E190-MR.

Pipe ISO 228/1	Code	Max viscosity		Ø mm	Kv l/mn	Power watt	Pressure		
		cSt	°E				min bar	M.O.P.D. AC bar DC bar	
3/4 NPT	21WN5KB190-MR	12	~ 2	19	140	8	0,2	16	16
1 NPT	21WN6KB250-MR			25	190				
1 1/4 NPT	21WN7KB350-MR			35	400				
1 1/2 NPT	21WN8KB400-MR			40	520				
2 NPT	21W7N9B500-MR			50	750				



CE Approval

(Pressure Equipment Directive 2014/68/EU)

for EV 21W5÷21W7

Note

Available on request and with minimum quantities.

The "ODE" reserves the right to carry out technical and aesthetic modifications without prior notice.

MATERIALS:

Body	Brass - UNI EN 12165 CW617N
Armature tube	Stainless steel AISI series 300
Fixed core	Stainless steel AISI series 400
Plunger	Stainless steel AISI series 400
Phase displacement ring	Copper - Cu 99,9%
Spring	Stainless steel AISI series 300
Seal	Standard: B=NBR On request: E=EPDM V=FKM
Orifice	Brass - UNI EN 12165 CW617N

On request:

Connector	Pg 9 or Pg 11
Connector conformity	ISO 4400

FEATURES:

Electrical conformity	IEC 335
Protection degree	IP 65 EN 60529 (DIN 40050) with coil fitted by connector.

SPARE PARTS:

- Coil:**
See coils list
- Complete plunger:**
Code R450898/B
- Complete armature tube :**
Code R450603
- Gasket O-Ring**
Code R990000/B
- Manual operation:**
Code R451772/B
- Gasket O-Ring:**

- Regulation screw:**
R450728/B

KIT:

KT130K B30-F= 2+3+4

MAINTENANCE KIT

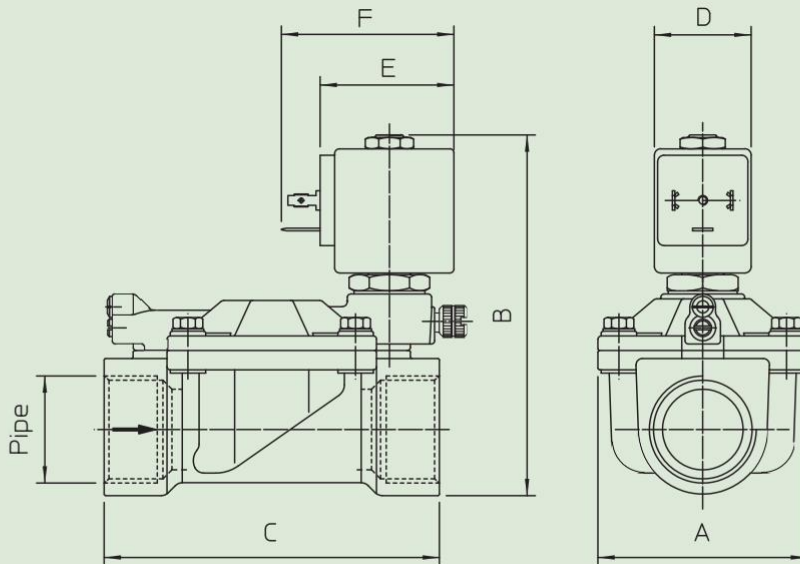
KTG0W3K B19= 2+6+7

KTG0W5K B35= 2+6+7

KTG0W7K B50= 2+6+7

- 3/4 NPT-1 NPT Code R990002/B
1 1/4 NPT-1 1/2 NPT Code R990005/B
2 NPT Code R990081/B

DIMENSIONS:



Type	Pipe ISO 228/1	A mm	B mm	C mm
21WN5KB190-MR	3/4 NPT	65	105	104
21WN6KB250-MR	1 NPT		112	
21WN7KB350-MR	1 1/4 NPT	98	125	144
21WN8KB400-MR	1 1/2 NPT			
21WN9KB500-MR	2 NPT	118	141	172

COIL TYPE	POWER ABSORPTION			DIMENSIONS		
	W =	Hold VA ~	Inrush VA ~	D mm	E mm	F mm
B	8	14,5	25	30	42	54