



# Solenoid valve 2/2 way N.C. With pilot control - NSF 61 Certified

21WN3K1E130-T5

÷

21WN6K1E250-T5

## PRESENTATION:

S.V. with pilot control for interception of fluids compatible with the construction materials.

A minimum operational pressure of 0,2 bar is required.

The materials used and the tests carried out ensure maximum reliability and duration.

**USE:** Water  
Water distribution

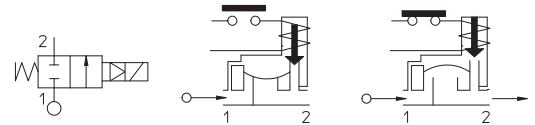
**PIPES:** 3/8 NPT - 1 NPT

**COILS:** 8W - Ø 13  
BDA - BSA 155°C (class F)  
BDV 180°C (class H)

Max. allowable pressure (PS) 25 bar  
Allowable temperature 82°C  
See coils catalogue page for its compatibility.



Gaskets	Temperature		Medium
E=EPDM (ethylene-propylene)	- 10°C	+ 140°C	Water



Pipe ANSI/ASME BI.20.1	Code	Max viscosity		Ø mm	Kv l/mn	Power watt	Pressure		
		cSt	°E				min bar	M.O.P.D	
								AC bar	DC bar
3/8 NPT	21WN3K1E130-T5	12	~ 2	13	60	8	0,2	16	16
1/2 NPT	21WN4K1E130-T5			70					
3/4 NPT	21WN5K1E190-T5			19	140				
1 NPT	21WN6K1E250-T5			25	190				

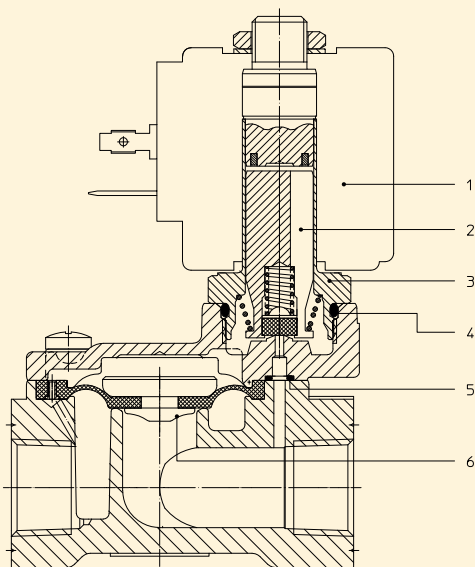


Certified to  
NSF/ANSI 61-G

## Note

Available on request and with minimum quantities.

The "ODE" reserves the right to carry out technical and aesthetic modifications without prior notice.



**MATERIALS:**

<b>Body</b>	Low Lead Brass
<b>Armature tube</b>	Stainless steel AISI series 300
<b>Fixed core</b>	Stainless steel AISI series 400
<b>Plunger</b>	Stainless steel AISI series 400
<b>Phase displacement ring</b>	Gold plated copper
<b>Spring</b>	Stainless steel AISI series 300
<b>Seal</b>	E=EPDM
<b>Orifice</b>	Low Lead Brass

**On request:**  
**Connector**  
**Connector conformity**

Pg 9 or Pg 11  
 ISO 4400

**FEATURES:**

**Electrical conformity** IEC 335  
**Protection degree** IP 65 EN 60529 (DIN 40050)  
 with coil fitted by connector.

**SPARE PARTS:**

- |  |  |
|--|--|
| <p><b>1. Coil:</b><br/>See coils list</p> <p><b>2. Complete plunger:</b><br/>Code R450886/EX1</p> <p><b>3. Complete armature tube:</b><br/>Code R453482</p> <p><b>4. Gasket O-Ring:</b><br/>Code R990000/EX1</p> <p><b>5. Gasket O-Ring:</b><br/>3/8 NPT - 1/2 NPT<br/>Code R990300/EX1<br/>3/4 NPT - 1 NPT<br/>Code R990002/EX1</p> | <p><b>6. Complete diaphragm:</b><br/>3/8 NPT - 1/2 NPT<br/>Code R452186/EX1/P<br/>3/4 NPT - 1 NPT<br/>Code R450431/EX1/P</p> |
|--|--|

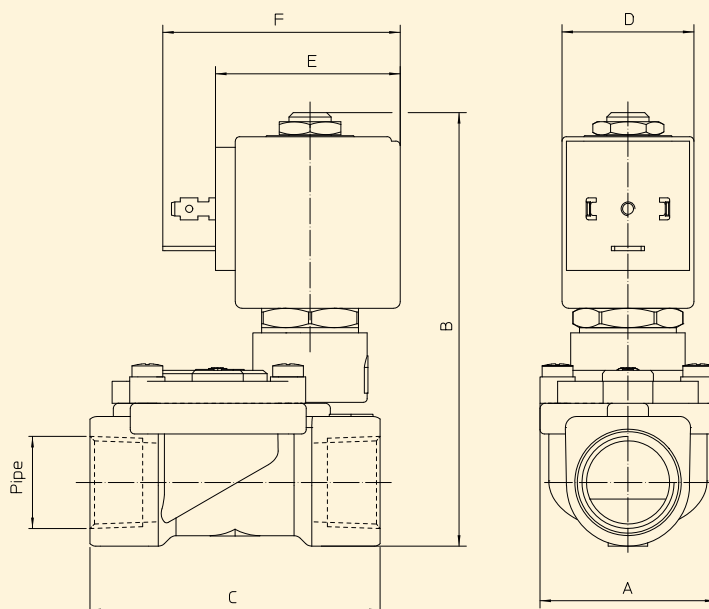
**KIT:**

KT130K1V30-F5=2+3

**MAINTENANCE KIT:**

3/8 NPT - 1/2 NPT  
 KTGWA3K1E13-5=2+5+6  
 3/4 NPT - 1 NPT  
 KTG0W3K1E19-5=2+5+6

**DIMENSIONS:**



Type	Pipe	A mm	B mm	C mm
21WN3K1E130-T5	3/8 NPT	40	97	60
21WN4K1E130-T5	1/2 NPT			66
21WN5K1E190-T5	3/4 NPT	65	105	104
21WN6K1E250-T5	1 NPT			

COIL TYPE	POWER ABSORPTION			DIMENSIONS		
	W ==	Hold VA ~	Inrush VA ~	D mm	E mm	F mm
B	8	14,5	25	30	42	54