



Solenoid valve 2/2 way N.C. With pilot control - NSF 61 Certified

21WN3K1E130-10T5

÷

21WN6K1E250-10T5

PRESENTATION:

S.V. with pilot control for interception of fluids compatible with the construction materials.

A minimum operational pressure of 0,2 bar is required.

The materials used and the tests carried out ensure maximum reliability and duration.

USE: Water
Water distribution

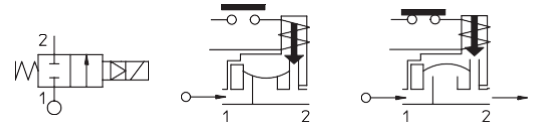
PIPES: 3/8 NPT - 1 NPT

COILS: 8W - Ø 13
BDA - BSA 155°C (class F)
BDV 180°C (class H)

Max. allowable pressure (PS) 25 bar
Allowable temperature 82°C
See coils catalogue page for its compatibility.



Gaskets	Temperature		Medium
E=EPDM (ethylene-propylene)	- 10°C	+ 140°C	Water



Pipe ANSI/ASME Bl.20.1	Code	Max viscosity		Ø mm	Kv l/mn	Power watt	Pressure		
		cSt	°E				min bar	M.O.P.D AC bar DC bar	
3/8 NPT	21WN3K1E130-10T5	12	~ 2	13	60	8	0,2	16	16
1/2 NPT	21WN4K1E130-10T5			70					
3/4 NPT	21WN5K1E190-10T5			140					
1 NPT	21WN6K1E250-10T5			190					

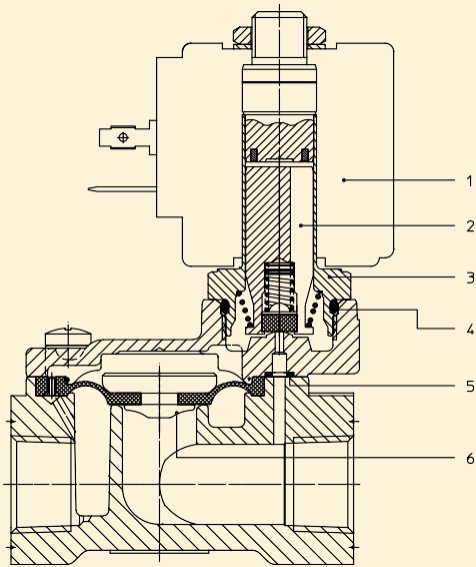


Certified to
NSF/ANSI 61-G

Note

Available on request and with minimum quantities.

The "ODE" reserves the right to carry out technical and aesthetic modifications without prior notice.



MATERIALS:

- Body** Low Lead Brass
- Armature tube** Stainless steel AISI series 300
- Fixed core** Stainless steel AISI series 400
- Plunger** Stainless steel AISI series 400
- Phase displacement ring** Gold plated copper
- Spring** Stainless steel AISI series 300
- Seal** E=EPDM
- Orifice** Low Lead Brass

- On request:**
Connector Pg 9 or Pg 11
Connector conformity ISO 4400

FEATURES:

- Electrical conformity** IEC 335
- Protection degree** IP 65 EN 60529 (DIN 40050) with coil fitted by connector.

SPARE PARTS:

- 1. Coil:** See coils list
- 2. Complete plunger:** Code R450886/EX1
- 3. Complete armature tube:** Code R453482
- 4. Gasket O-Ring:** Code R990000/EX1
- 5. Gasket O-Ring:** 3/8 NPT - 1/2 NPT Code R990300/EX1
3/4 NPT - 1 NPT Code R990002/EX1
- 6. Complete diaphragm:** 3/8 NPT - 1/2 NPT Code R452186/EX1/P
3/4 NPT - 1 NPT Code R450431/EX1/P

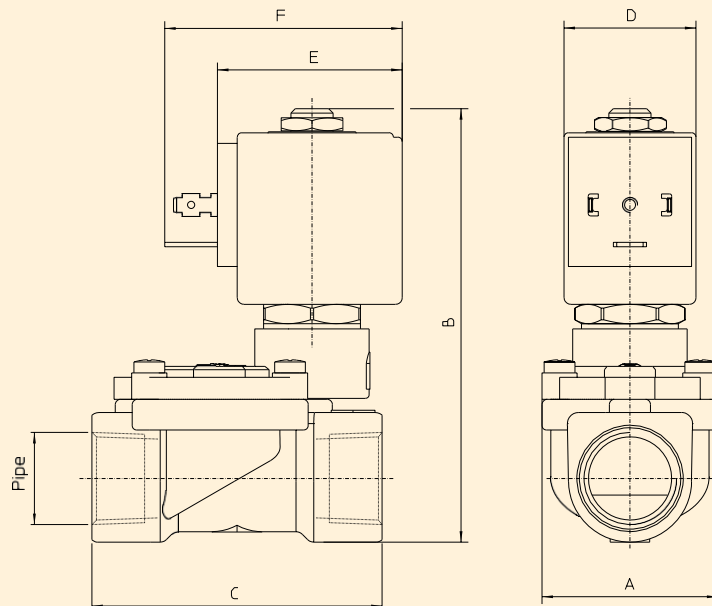
KIT:

KT130K1 V30-F5=2+3

MAINTENANCE KIT:

3/8 NPT - 1/2 NPT
 KTGWA3K1E13-5=2+5+6
 3/4 NPT - 1 NPT
 KTG0W3K1E19-5=2+5+6

DIMENSIONS:



Type	Pipe	A mm	B mm	C mm
21WN3K1E130-10T5	3/8 NPT	40	97	60
21WN4K1E130-10T5	1/2 NPT			66
21WN5K1E190-10T5	3/4 NPT	65	105	104
21WN6K1E250-10T5	1 NPT			

COIL TYPE	POWER ABSORPTION			DIMENSIONS		
	W	Hold VA ~	Inrush VA ~	D mm	E mm	F mm
B	8	14,5	25	30	42	54