



**Solenoid valve 2/2 way N.C.  
With pilot control  
Explosion proof - Atex Ex d**

**21W3KIB190  
÷  
21W7KIB500**

**PRESENTATION:**

S.V. with pilot control for interception of fluids compatible with the construction materials. Aluminium coil housing, explosion proof "Ex d" . Electrical and electromechanical components according to Atex Directive 2014/34/EU.

A minimum operational pressure of 0,2 bar is required. The materials used and the tests carried out ensure maximum reliability and duration.

**USE:** Potentially explosive atmospheres  
Zone 1, 2, 21, 22

**PIPES:** G 3/4 - G 2

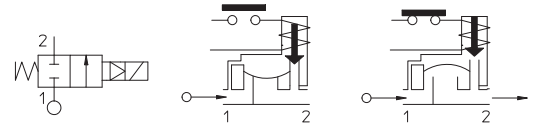
**COIL:** 8W - Ø 13  
BDV 180°C (class H)

Max. allowable pressure (PS)  
G 3/4 - G 1 25 bar  
G 1 1/4 - G 2 16 bar  
Housing ambient temperature - 40°C + 60°C



Gaskets	Temperature		Medium
<b>B</b> =NBR (nitrile rubber)	- 10°C	+ 80°C	Air, inert gas, water
<b>E</b> =EPDM (ethylene-propylene)	- 10°C	+ 80°C	Water, low pressure steam
<b>V</b> =FKM (fluoroelastomer)	- 10°C	+ 80°C	Mineral oils (2°E), gasoline gas oil
<b>F</b> =H-NBR (hydrogenated nitrile)	- 30°C	+ 80°C	Air, inert gas, water R 134a, R 404a

For seals other than NBR replace the letter "B" with the ones corresponding to the other seals. E.I. 21W3KIV190.



Pipe ISO 228/1	Code	Max viscosity		Ø mm	Kv l/mn	Power watt	Pressure		
		cSt	°E				min bar	M.O.P.D. AC bar DC bar	
G 3/4	21W3KIB190	12	~ 2	19	140	8	0,2	16	16
G 1	21W4KIB250			25	190				
G 1 1/4	21W5KIB350			35	400			10	10
G 1 1/2	21W6KIB400			40	520				
G 2	21W7KIB500			50	750				



**CE Approval**  
(Pressure Equipment Directive 2014/68/EU)  
for S.V. 21W5÷21W7



(According to Directive 2014/34/EU ATEX)  
II 2G Ex d IIC T6 o T5 Gb  
II 2D Ex tb IIIC T80°C o T95°C Db IP67

**Note**

Available on request and with minimum quantities.

The "ODE" reserves the right to carry out technical and aesthetic modifications without prior notice.

**MATERIALS:**

**Body** Brass - UNI EN 12165 CW617N  
**Armature tube** Stainless steel AISI series 300  
**Fixed core** Stainless steel AISI series 400  
**Plunger** Stainless steel AISI series 400  
**Phase displacement ring** Copper - Cu 99,9%  
**Spring** Stainless steel AISI series 300  
**Seal** Standard: B=NBR  
 On request :V=FKM; E=EPDM ;F=H-NBR  
**Orifice** Brass - UNI EN 12165 CW617N  
**Coil housing:** Die cast and passivated Aluminium

**Connector conformity** ISO 4400

**FEATURES:**

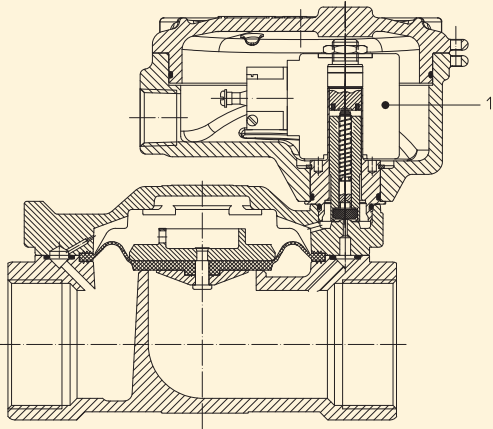
**Electrical conformity** IEC 335  
**Protection degree** IP 67 EN 60529 (DIN 40050)  
 if installed with cable gland Atex Ex d IP67 or higher.

**SPARE PARTS:**

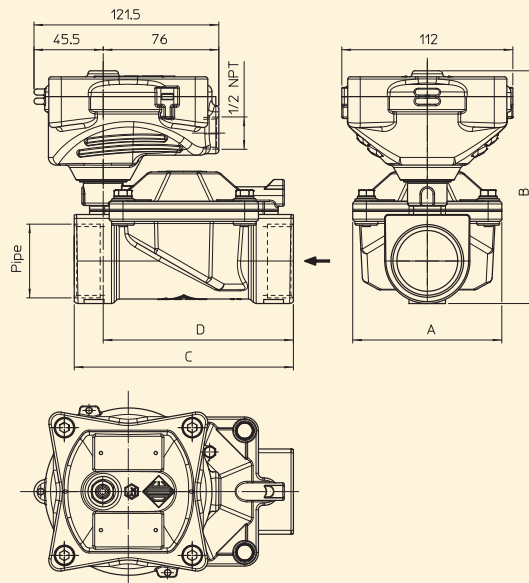
**1. Coil:**  
 See coils list for Solenoid valves explosion proof Atex - Ex d

**ACCESSORIES:**

Code P992219 Cable Gland (to be ordered separately)



**DIMENSIONS:**



Type	Pipe ISO 228/1	A mm	B mm	C mm	D mm
21W3KIB190	G 3/4	65	128	104	89
21W4KIB250	G 1		136		
21W5KIB350	G 1 1/4	98	153	144	125
21W6KIB400	G 1 1/2				
21W7KIB500	G 2	118	144	172	150

COIL TYPE	POWER ABSORPTION		
	W	Hold VA ~	Inrush VA ~
B	8	14,5	25