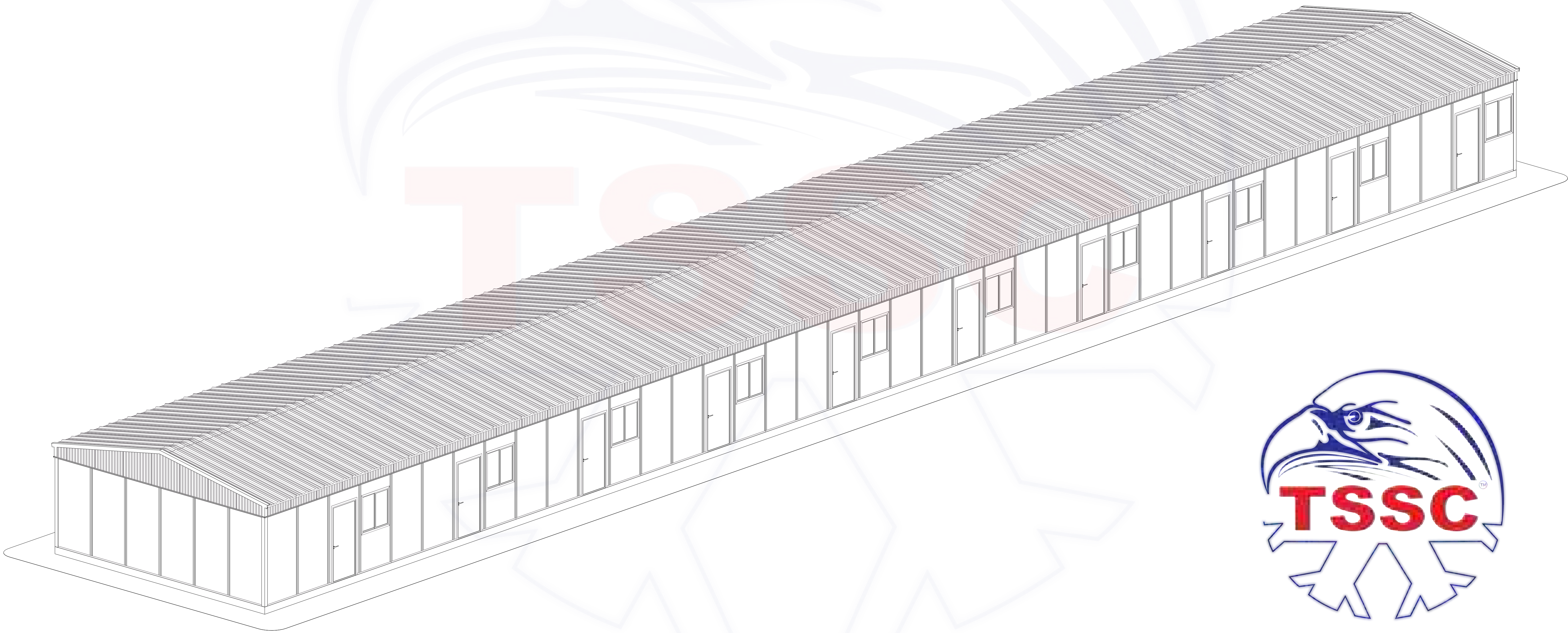


LABOR ACCOMODATION (H-SYSTEM DESIGN) CONCRETE FLOOR OPTION INSTALLATION PROCESS



STEP 1: BASED FROM THE FLOOR PLAN, FIX THE BASE CHANNELS
TO THE CONCRETE FLOOR



STEP 2: INSTALL THE FIRST THREE COLUMNS AT THE CORNER



STEP 3: INSERT THE WALL PANELS TO THE COLUMNS



STEP 4: INSTALL THE NEXT THREE ADJACENT COLUMNS



STEP 5: INSERT THE WALL PANELS TO COLUMNS



STEP 6: INSTALL THE REMAINING COLUMNS & WALL PANELS OF THE FIRST BAY



STEP 7: FIX THE TOP CHANNELS AT THE FIRST BAY



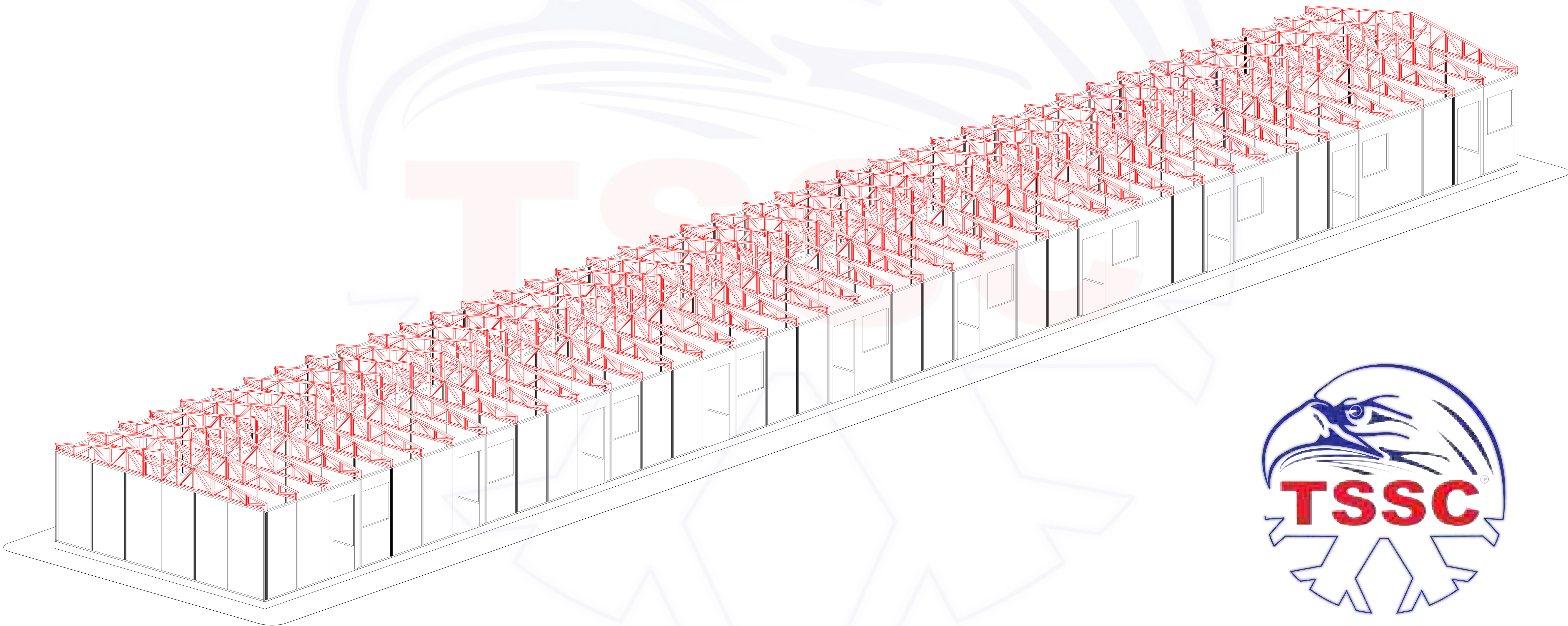
STEP 8: INSTALL THE COLUMNS, WALL PANELS & TOP CHANNELS OF THE ADJACENT BAY



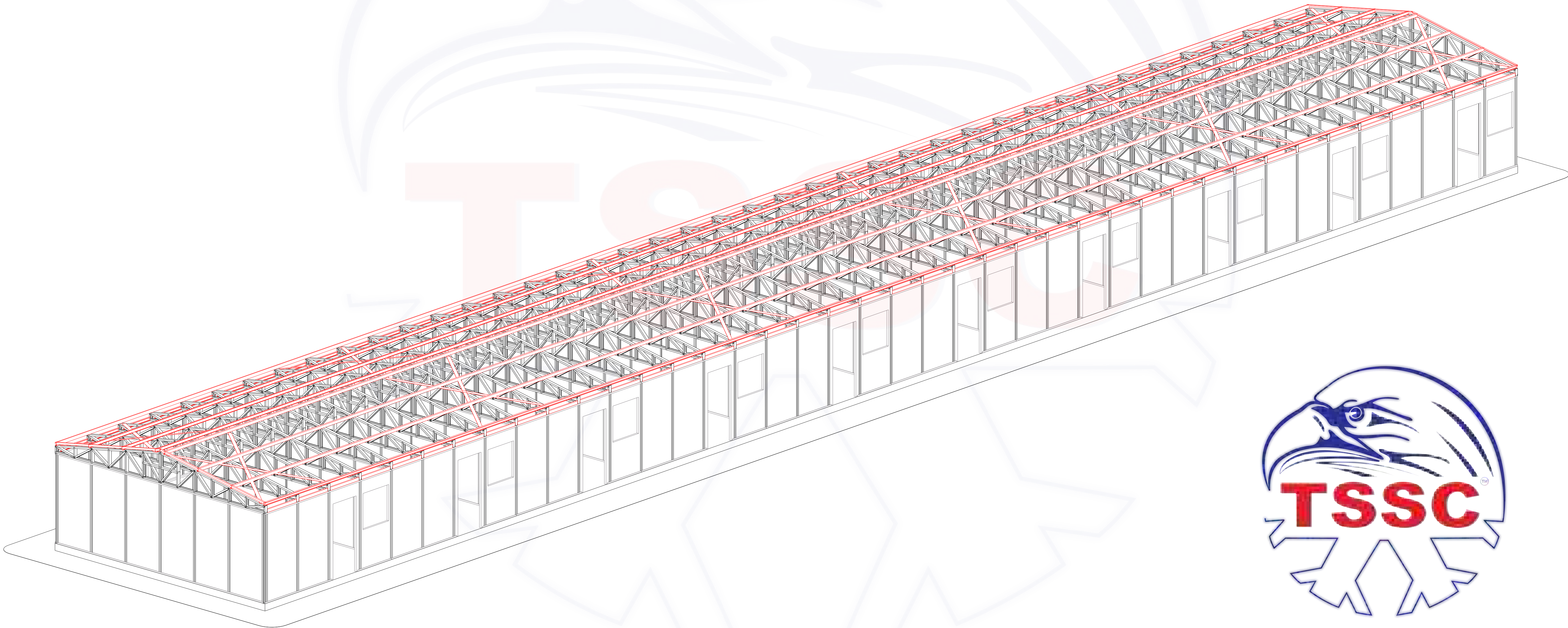
STEP 9: INSTALL ALL OF THE REMAINING COLUMNS, WALL PANELS & TOP CHANNELS



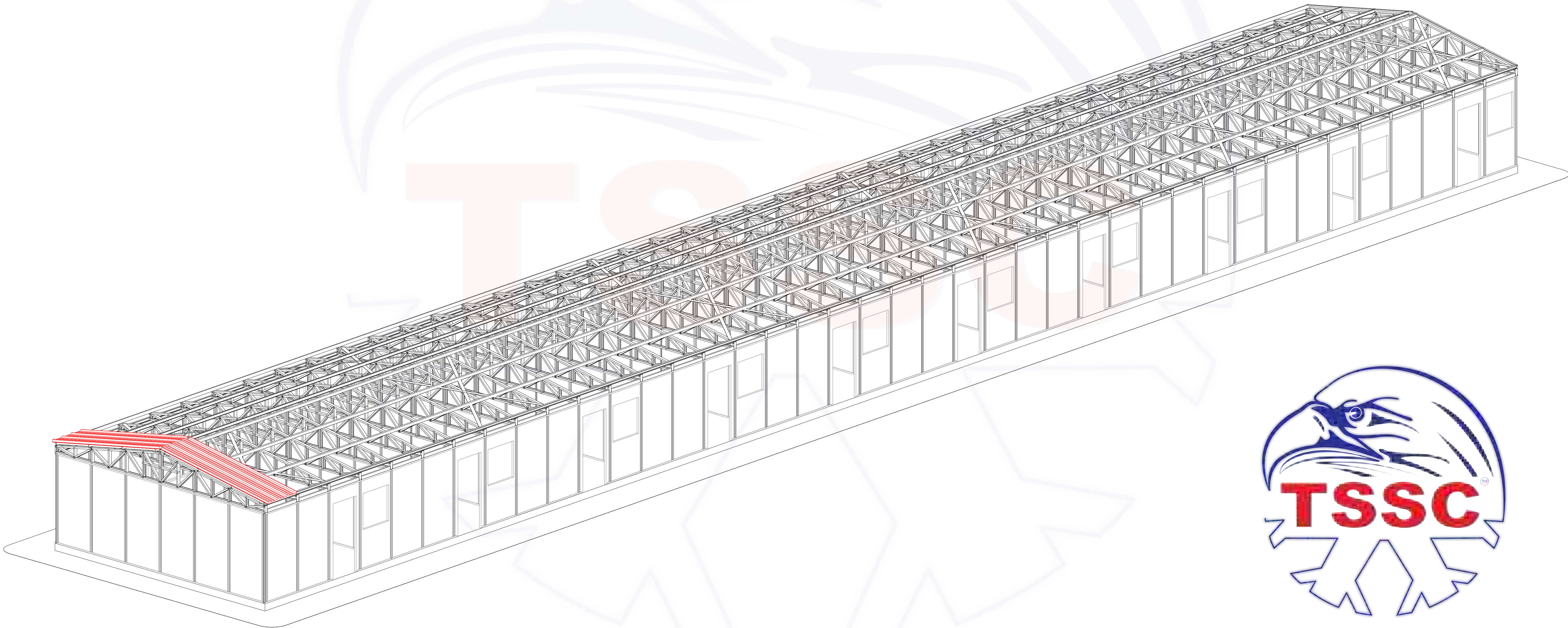
STEP 10: FIX THE ROOF TRUSSES ON THE TOP CHANNELS



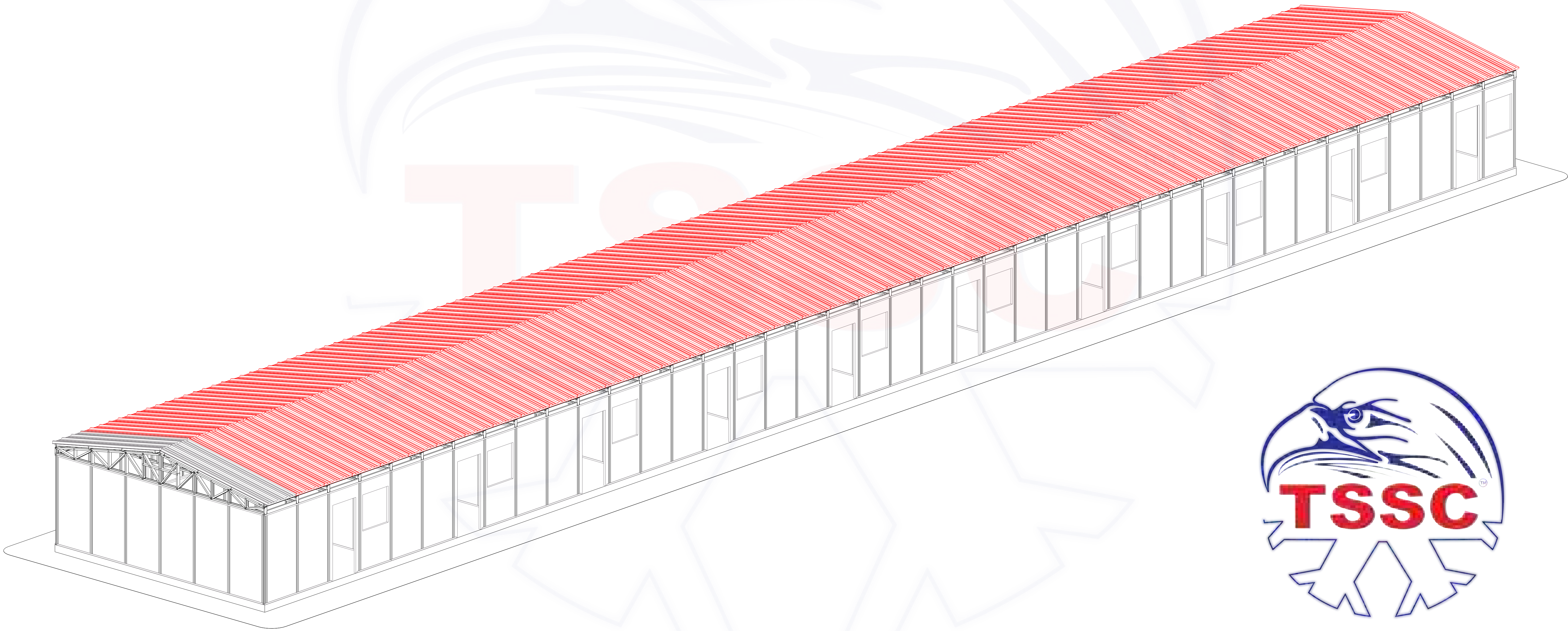
STEP 11: INSTALL THE ROOF PURLINS & ROOF BRACINGS



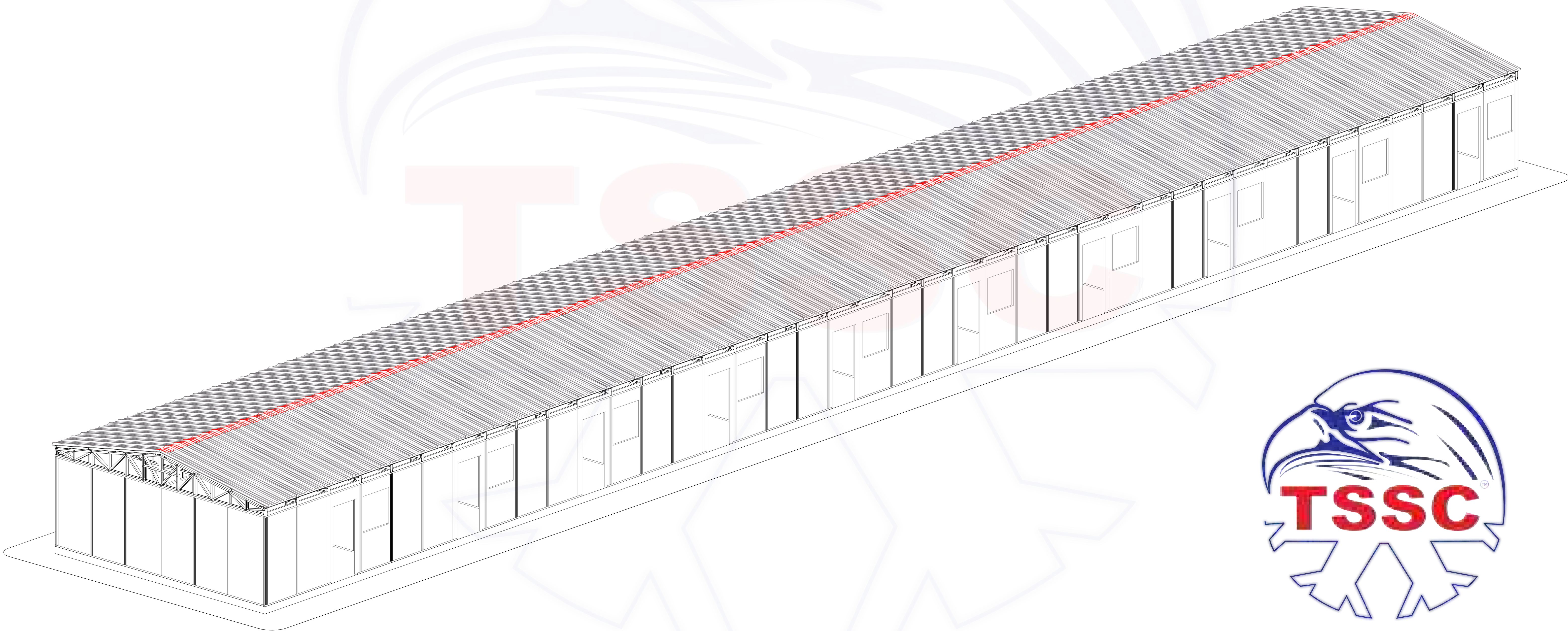
STEP 12: INSTALL THE FIRST LINE OF ROOF PANELS



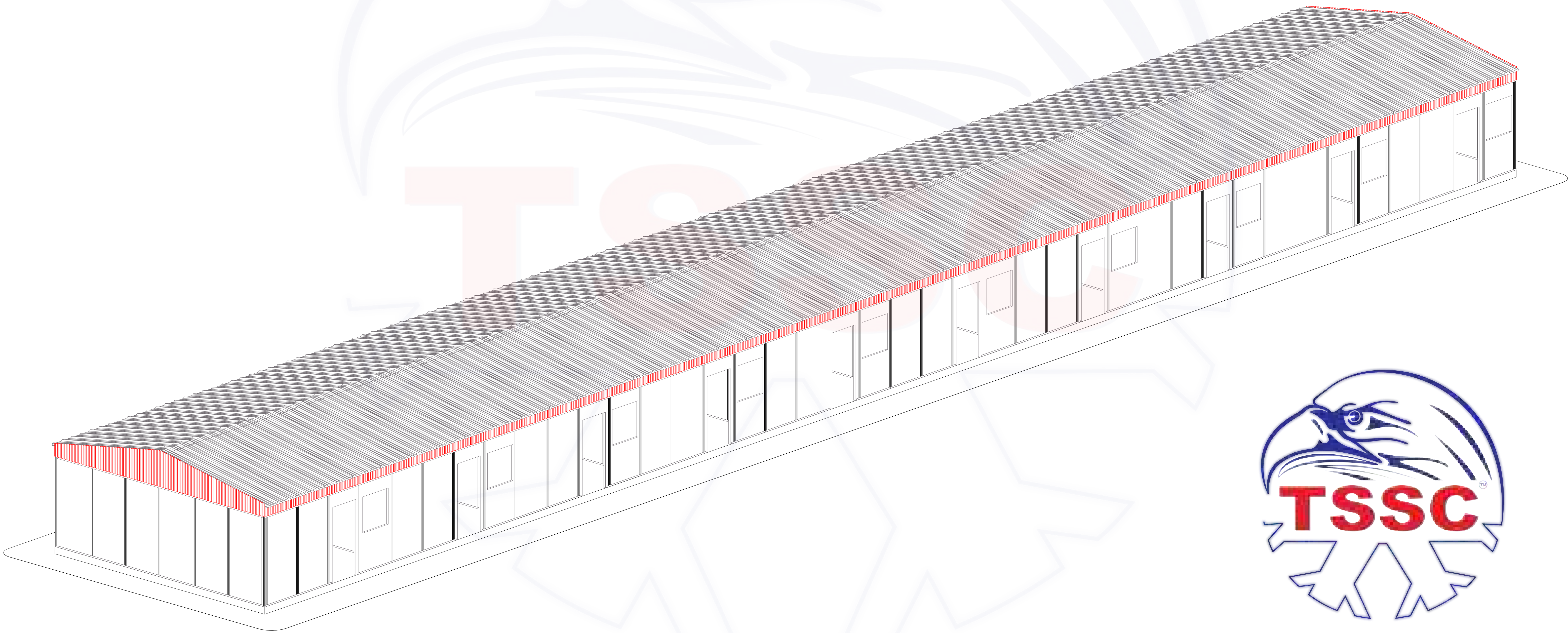
STEP 13: INSTALL THE REMAINING ROOF PANELS



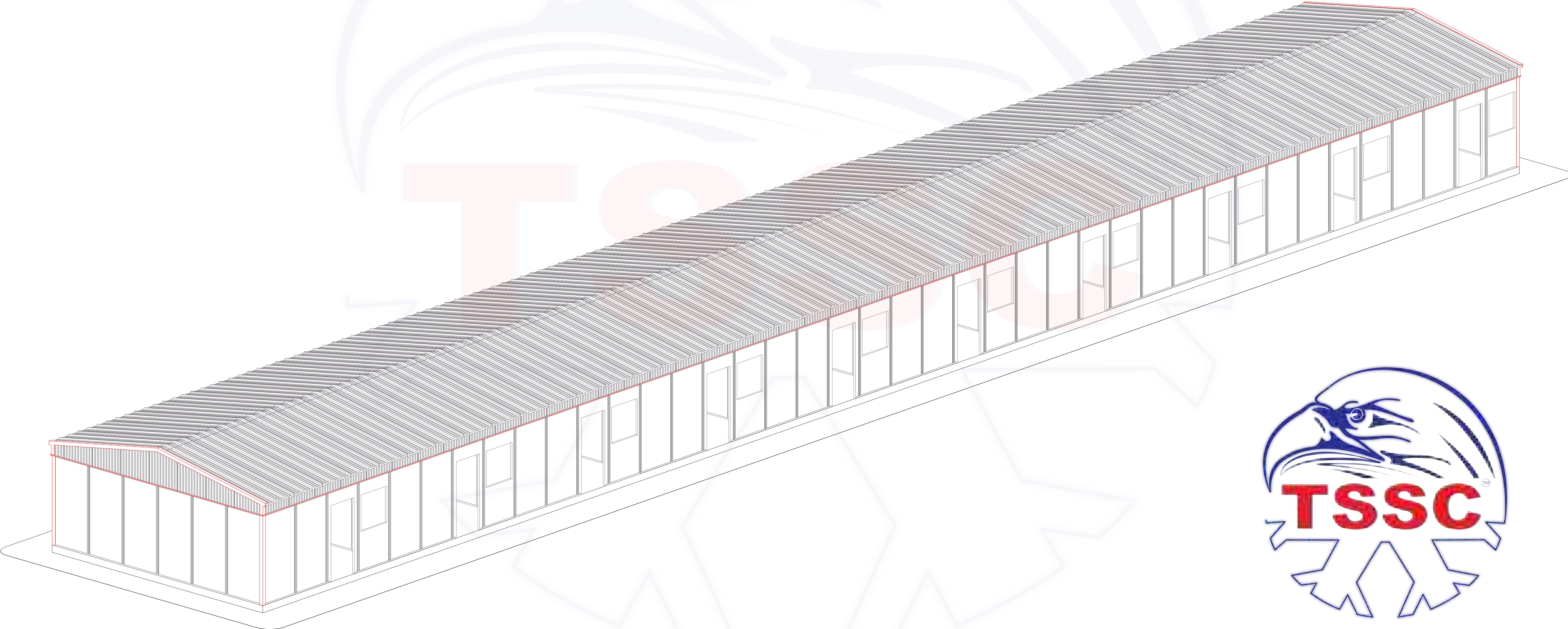
STEP 14: FIX THE ROOF RIDGE PROFILE



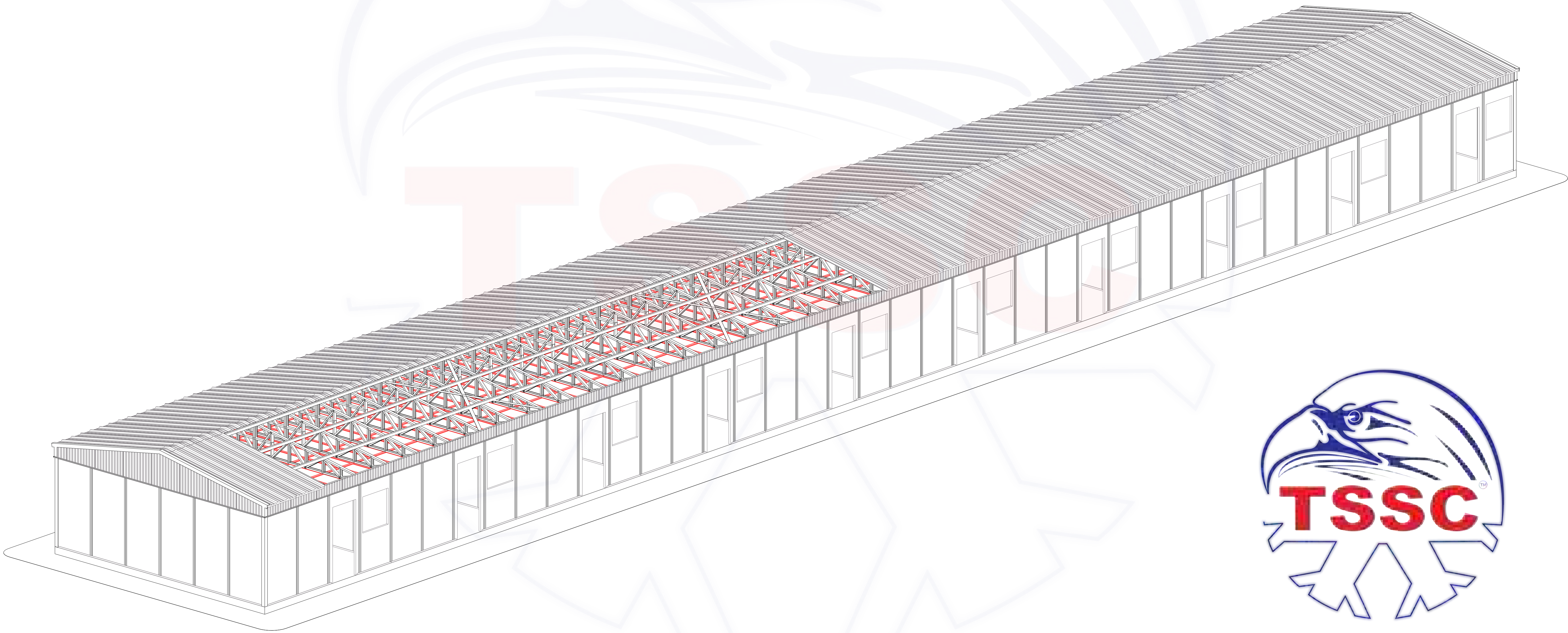
STEP 15: INSTALL THE WALL SHEETING ON GABLE AND EAVE SIDE



STEP 16: INSTALL THE FLASHINGS



STEP 17: CEILING WORKS



STEP 18: DOORS & WINDOWS INSTALLATION

