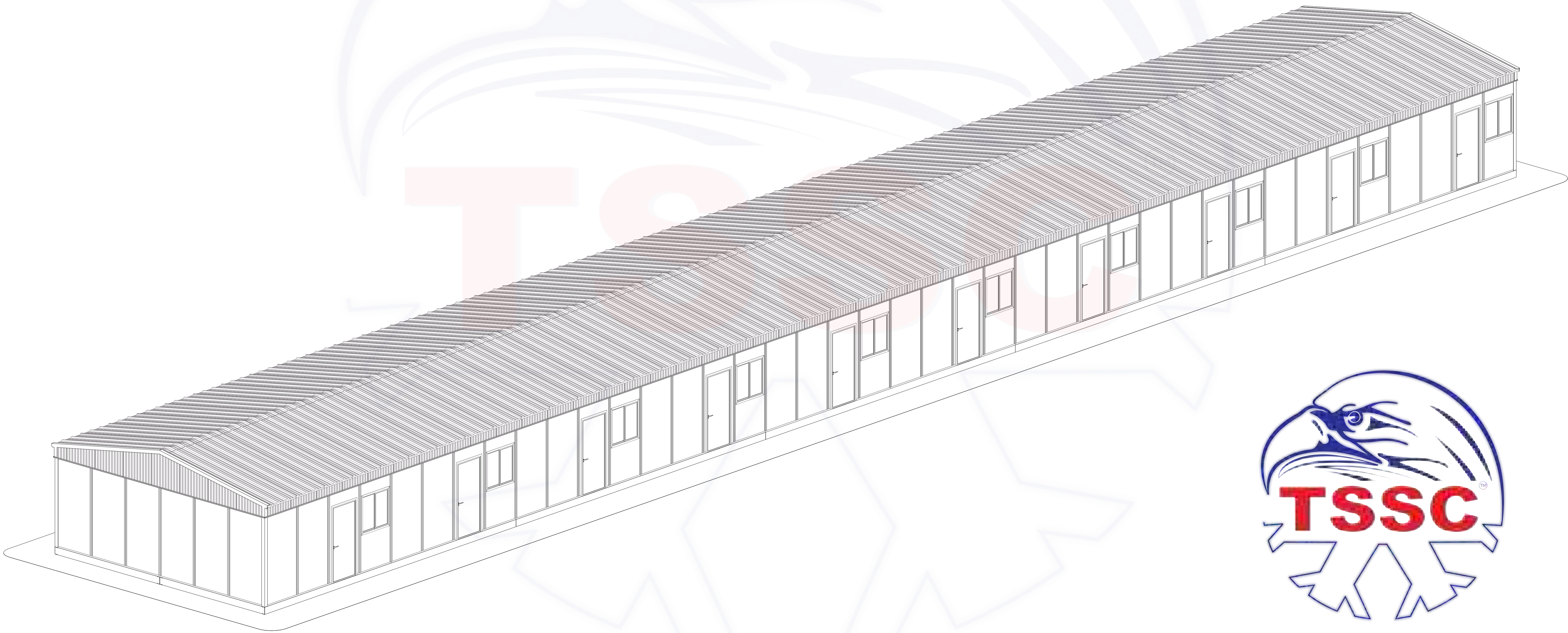
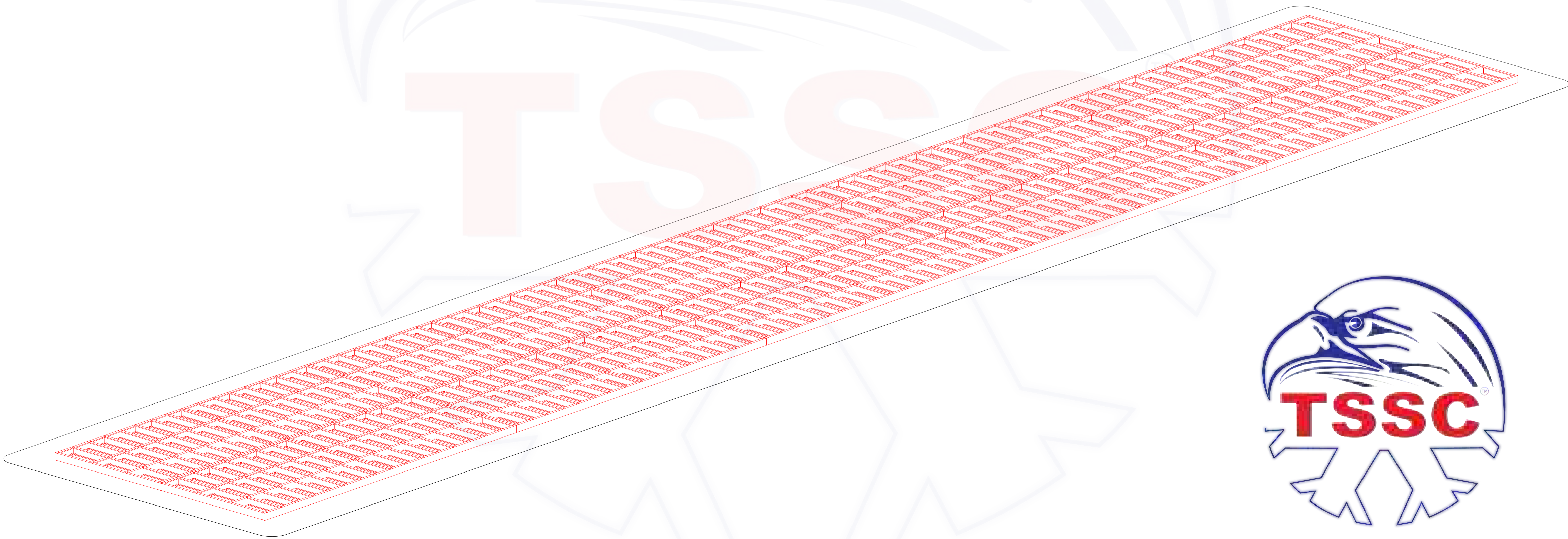


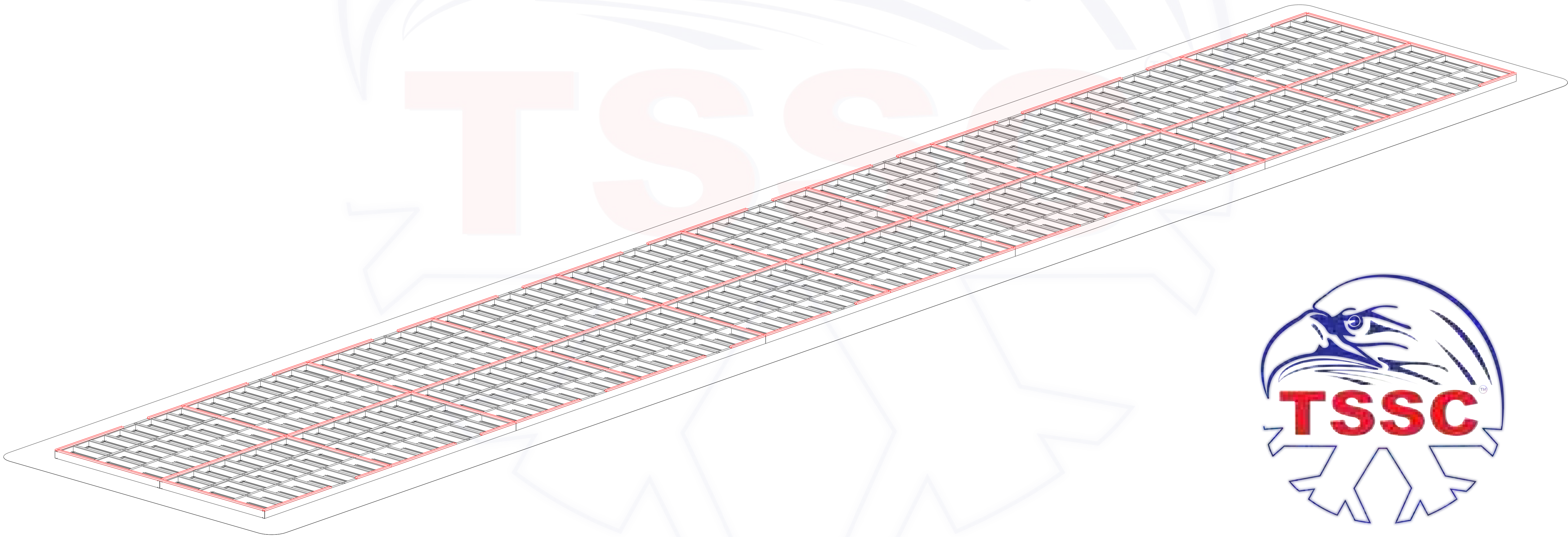
LABOR ACCOMODATION (H-SYSTEM DESIGN) STEEL FRAME FLOOR OPTION INSTALLATION PROCESS



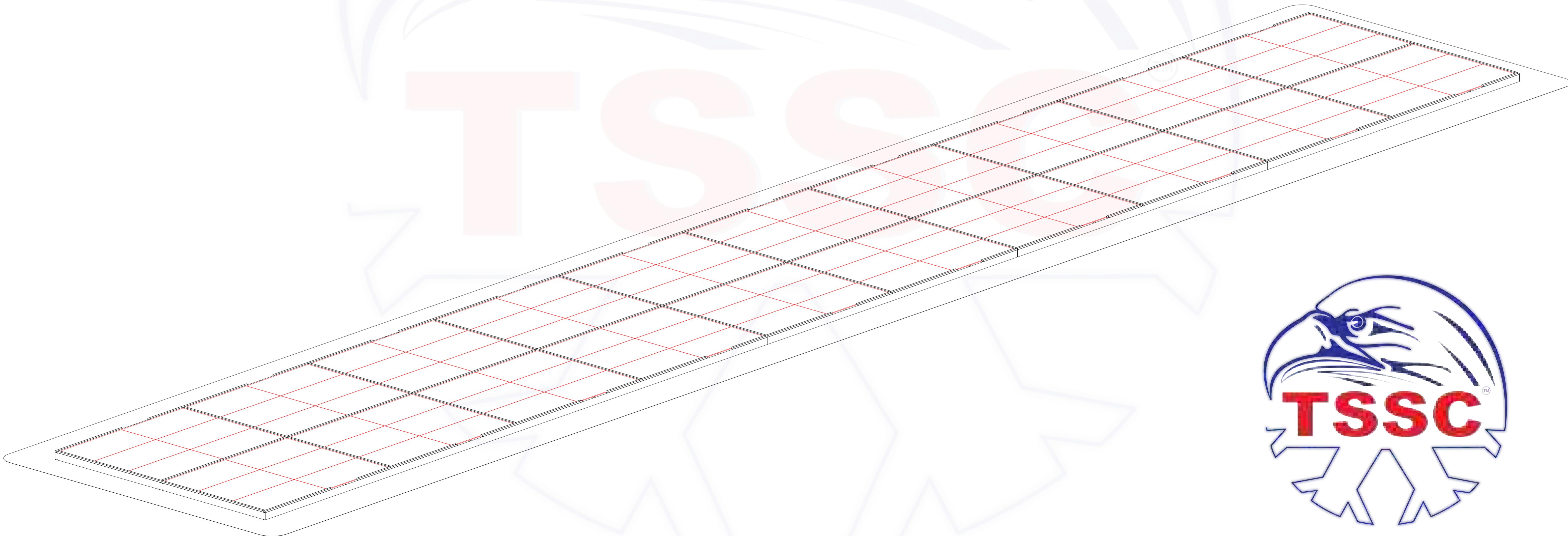
STEP 1: BASED FROM THE FLOOR FRAMING PLAN,
ALIGN AND FIX THE STEEL FLOOR FRAMES



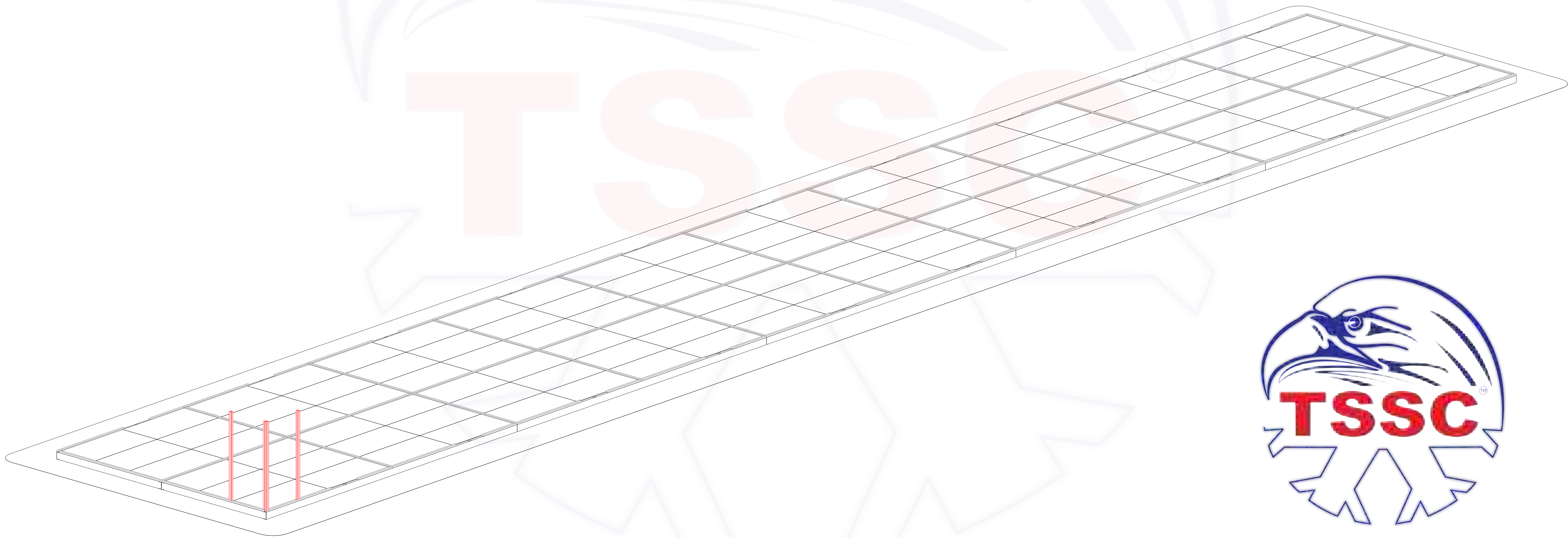
STEP 2: FIX THE BASE CHANNELS TO THE FLOOR FRAMES



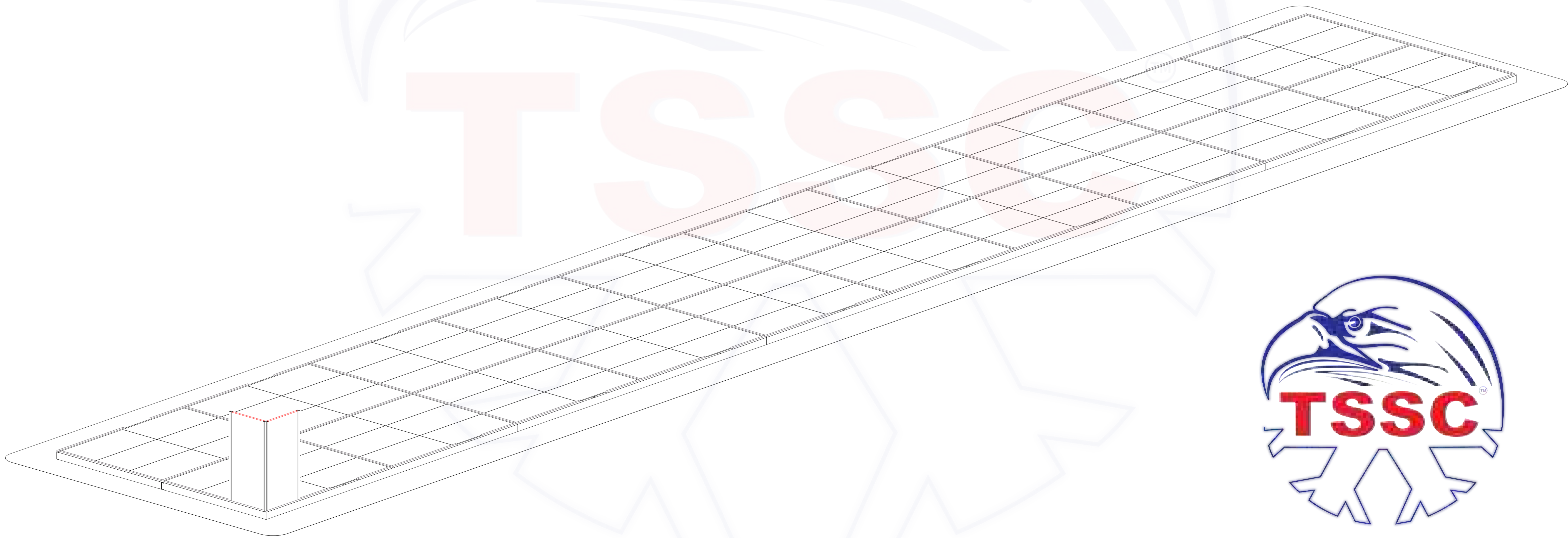
STEP 3: FIX THE CEMENT BOARDS TO THE FLOOR FRAMES



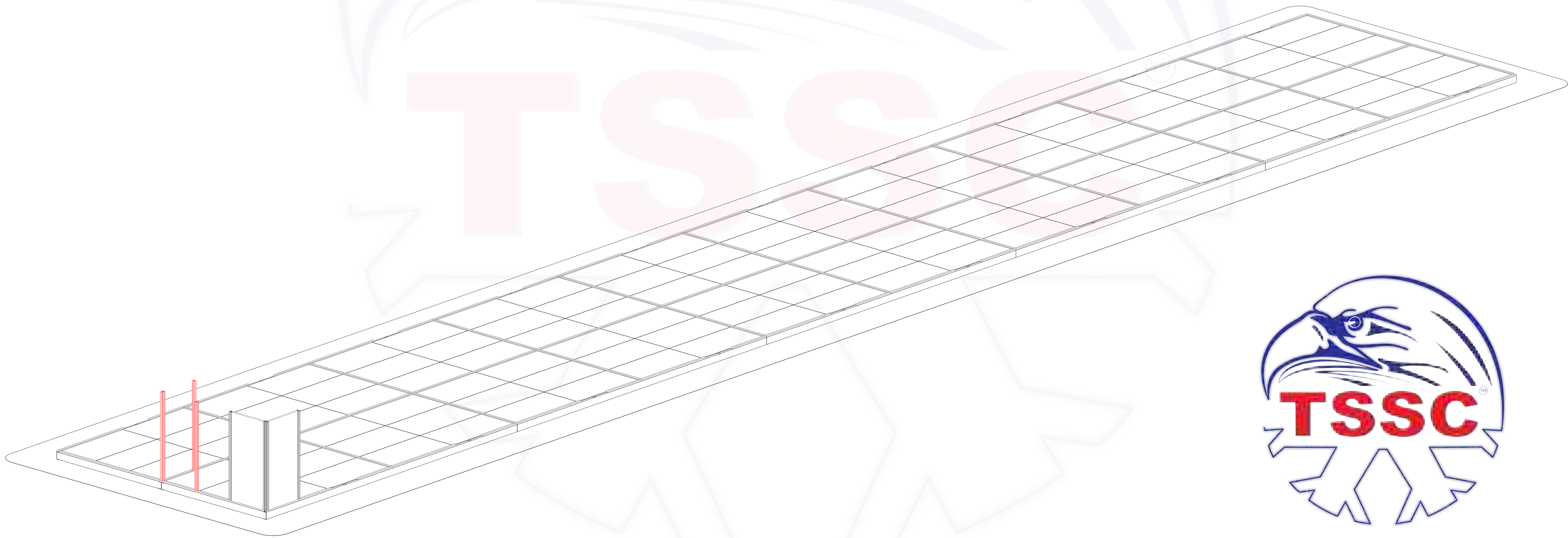
STEP 4: INSTALL THE FIRST THREE COLUMNS AT THE CORNER



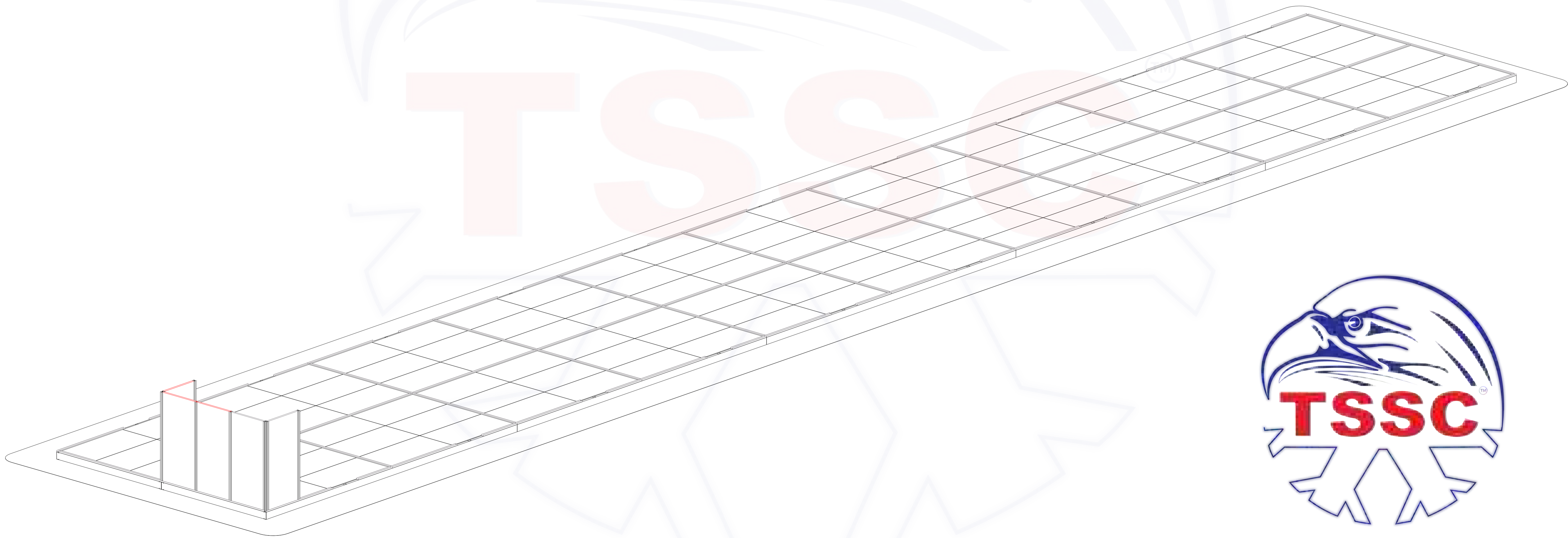
STEP 5: INSERT THE WALL PANELS TO THE COLUMNS



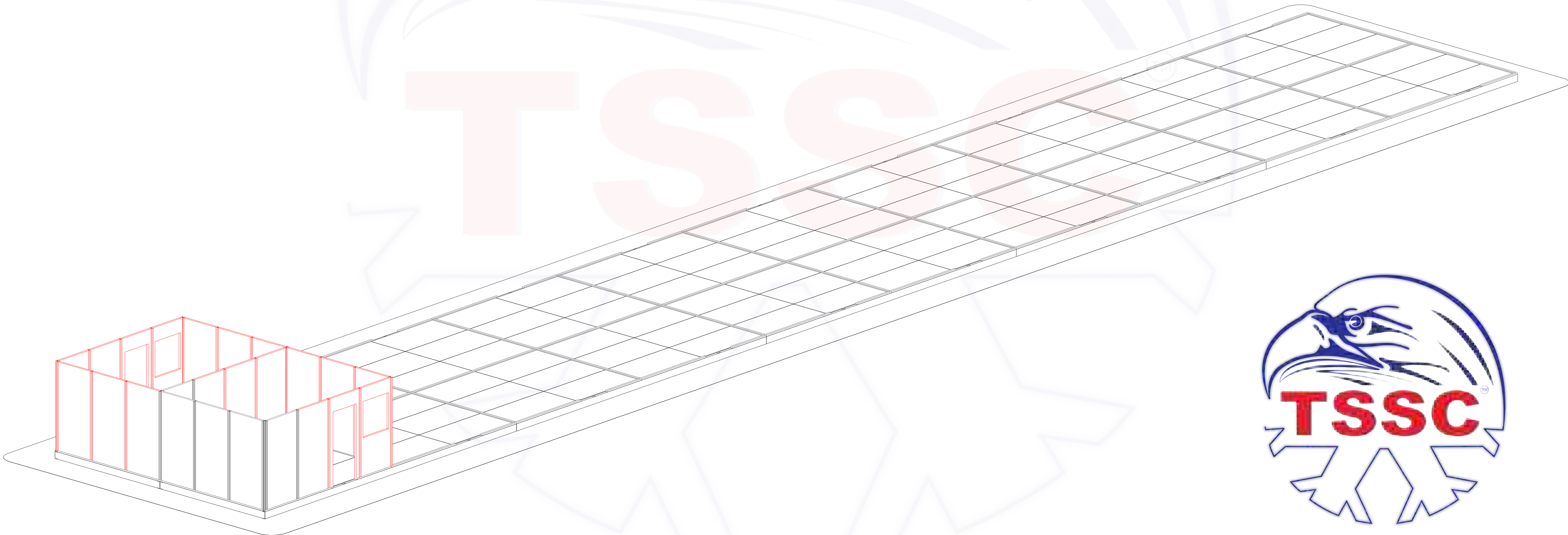
STEP 6: INSTALL THE NEXT THREE ADJACENT COLUMNS



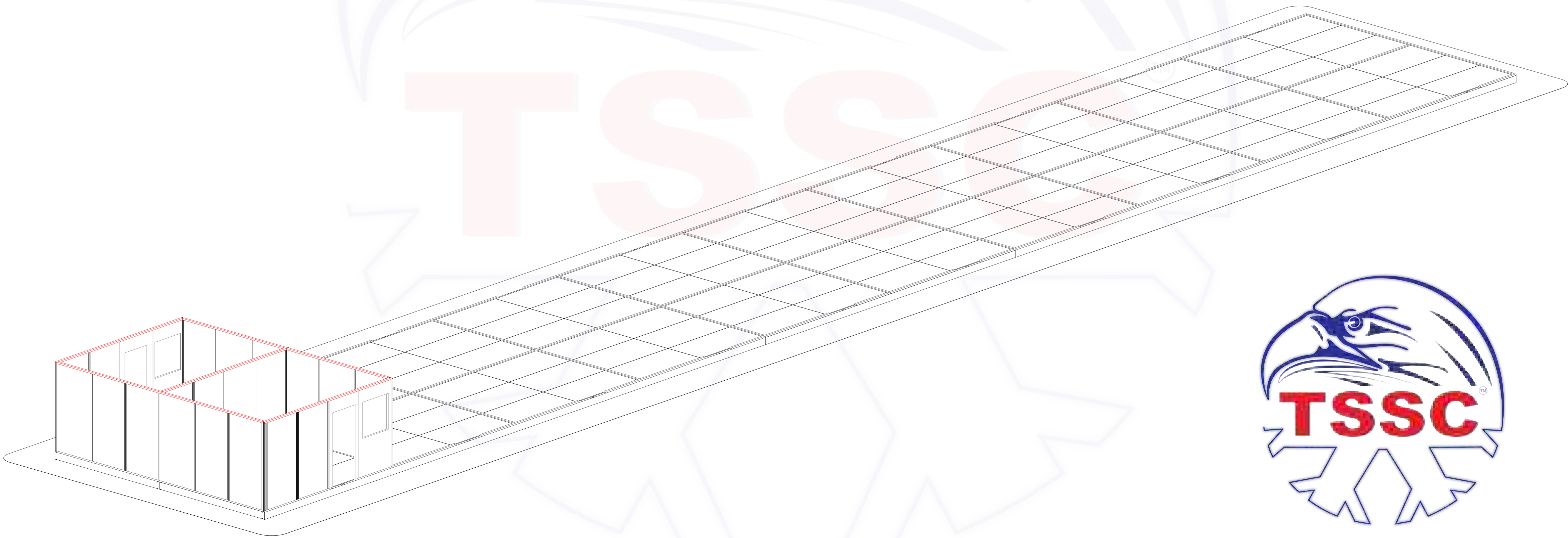
STEP 7: INSERT THE WALL PANELS TO COLUMNS



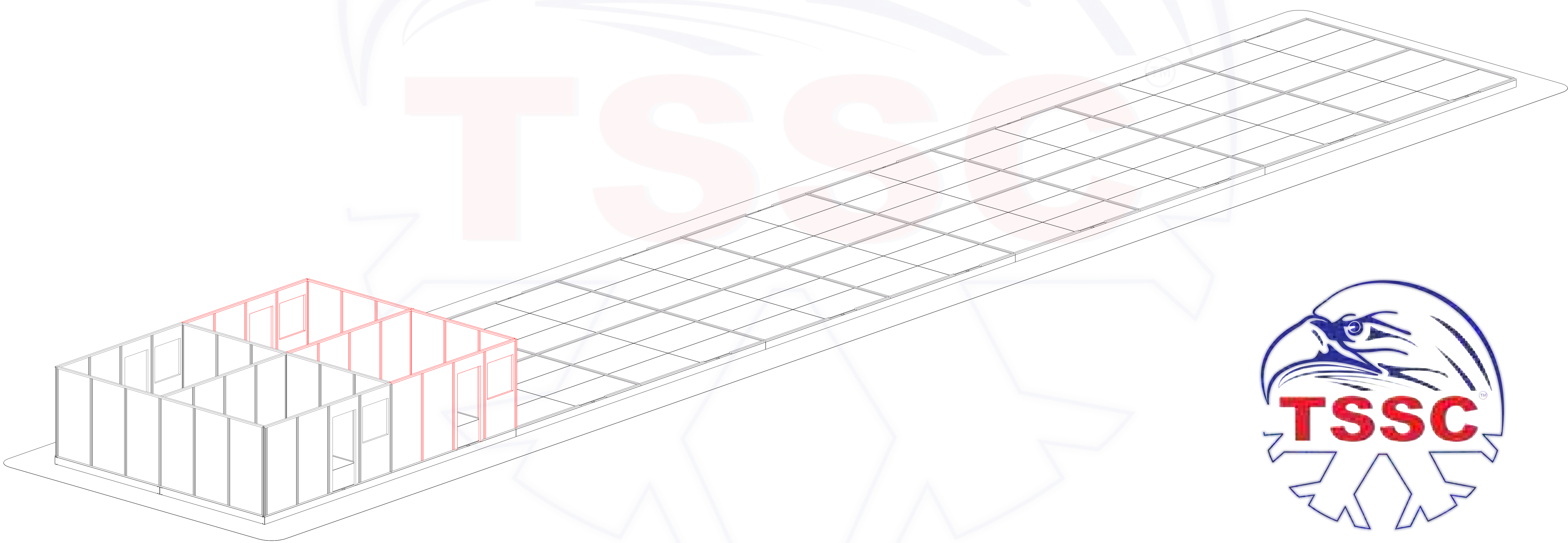
STEP 8: INSTALL THE REMAINING COLUMNS & WALL PANELS OF THE FIRST BAY



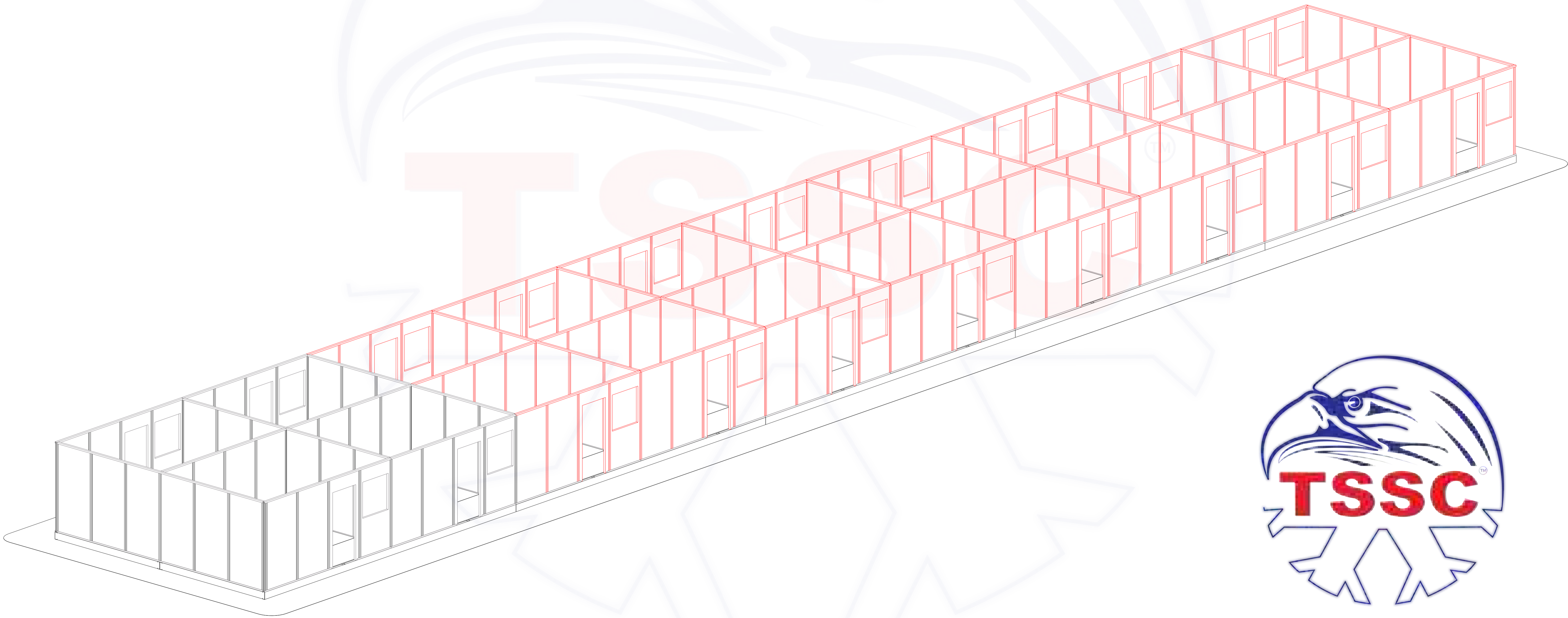
STEP 9: FIX THE TOP CHANNELS AT THE FIRST BAY



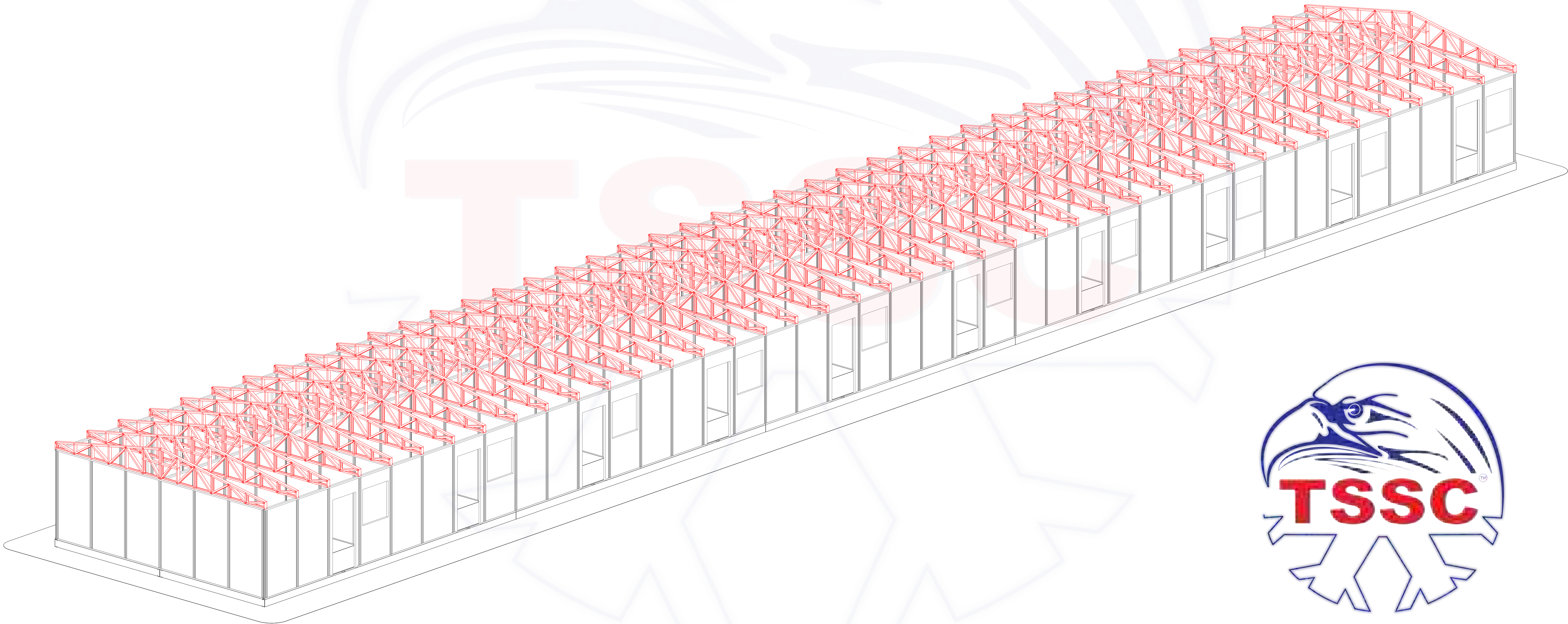
STEP 10: INSTALL THE COLUMNS, WALL PANELS
& TOP CHANNELS OF THE ADJACENT BAY



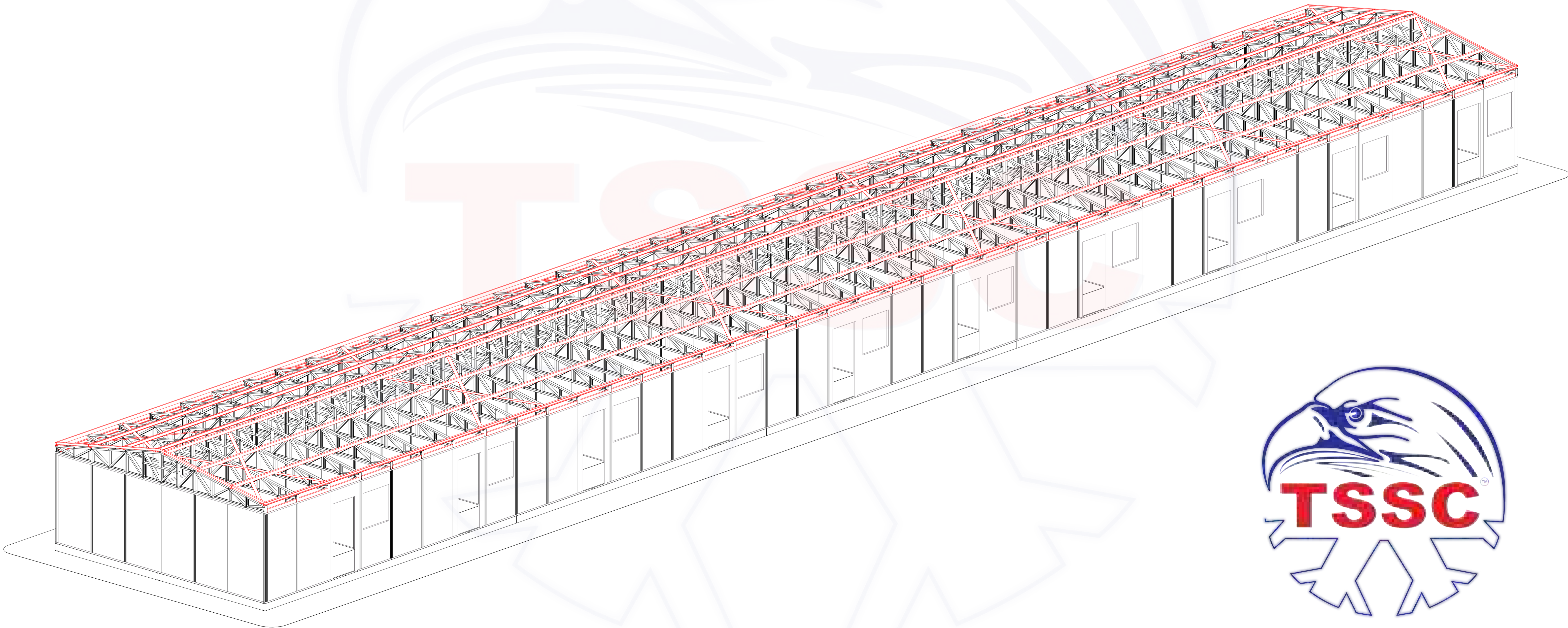
STEP 11: INSTALL ALL OF THE REMAINING COLUMNS, WALL PANELS & TOP CHANNELS



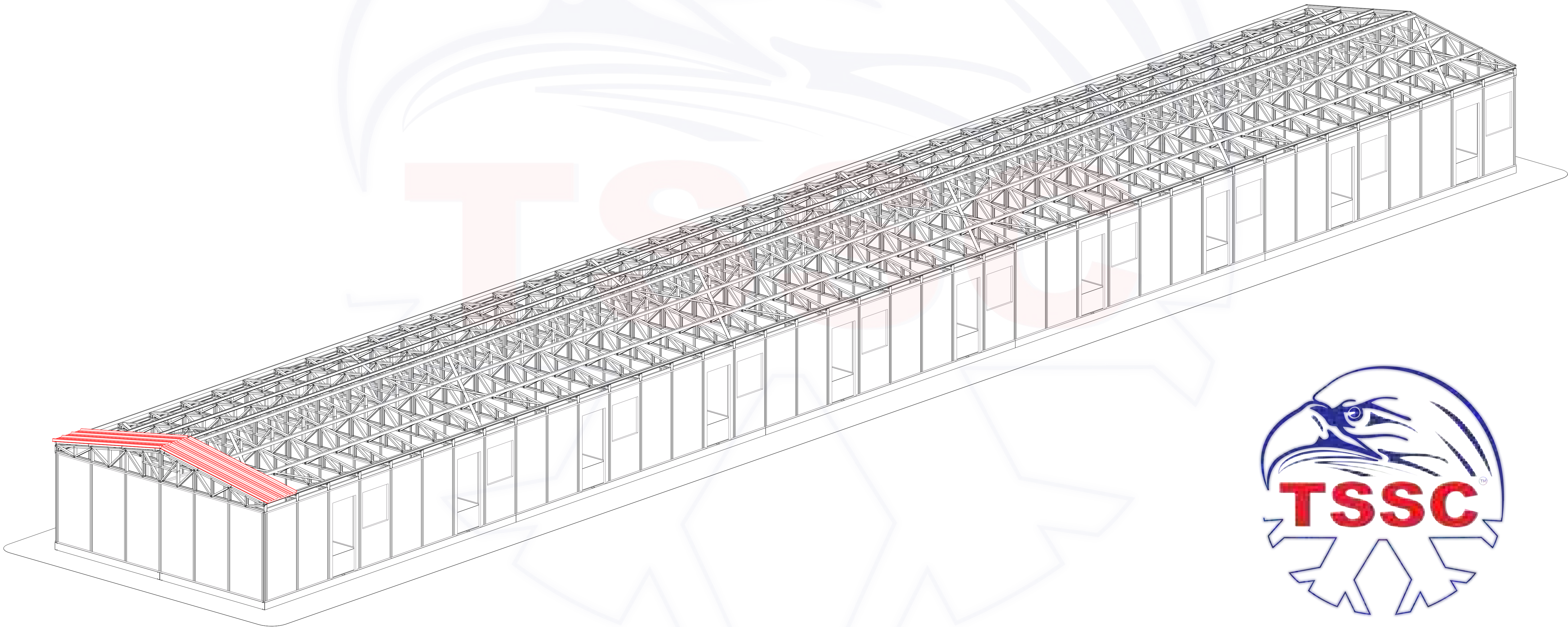
STEP 12: FIX THE ROOF TRUSSES ON THE TOP CHANNELS



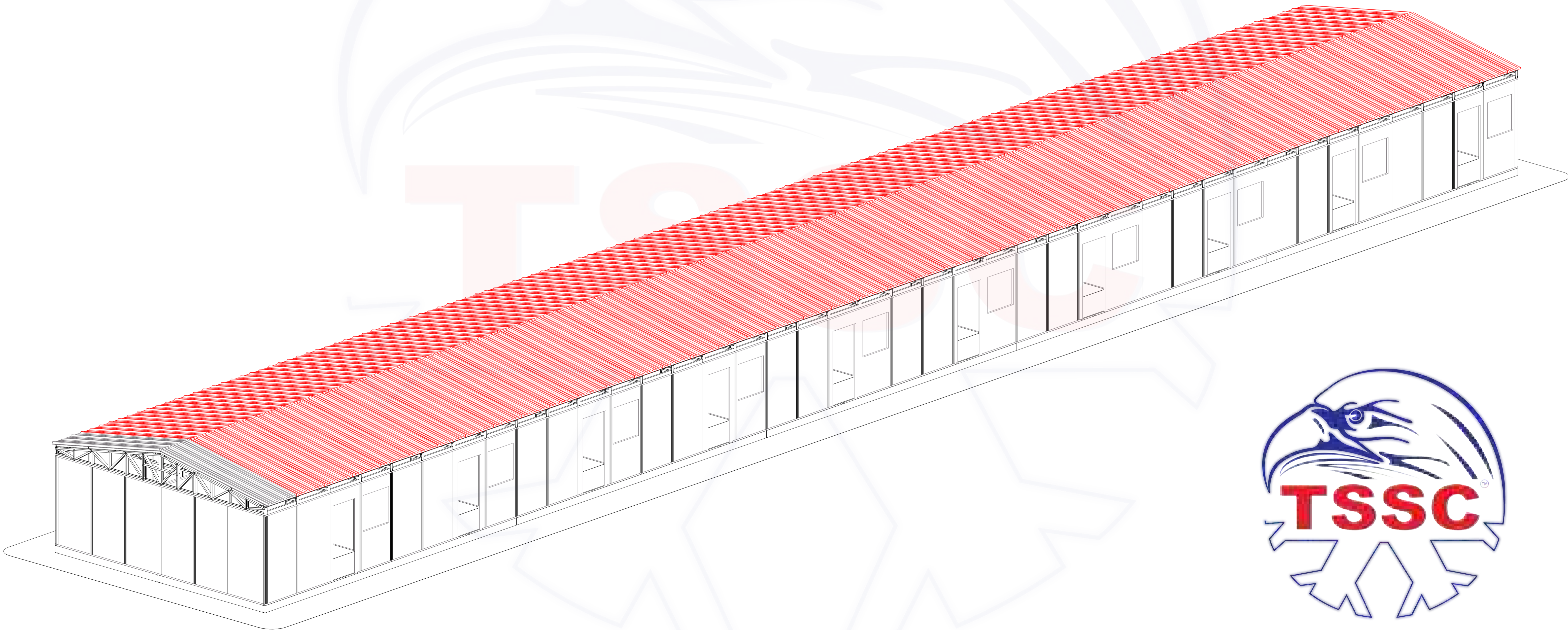
STEP 13: INSTALL THE ROOF PURLINS & ROOF BRACINGS



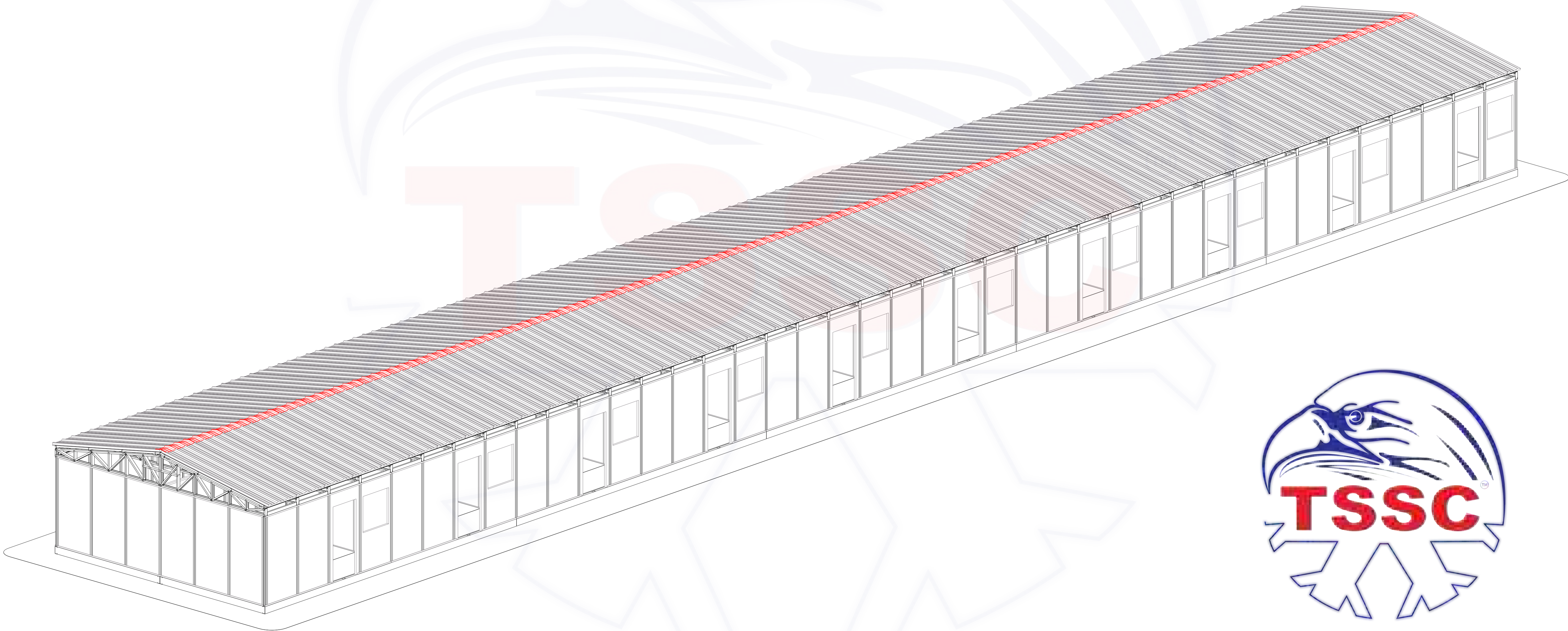
STEP 14: INSTALL THE FIRST LINE OF ROOF PANELS



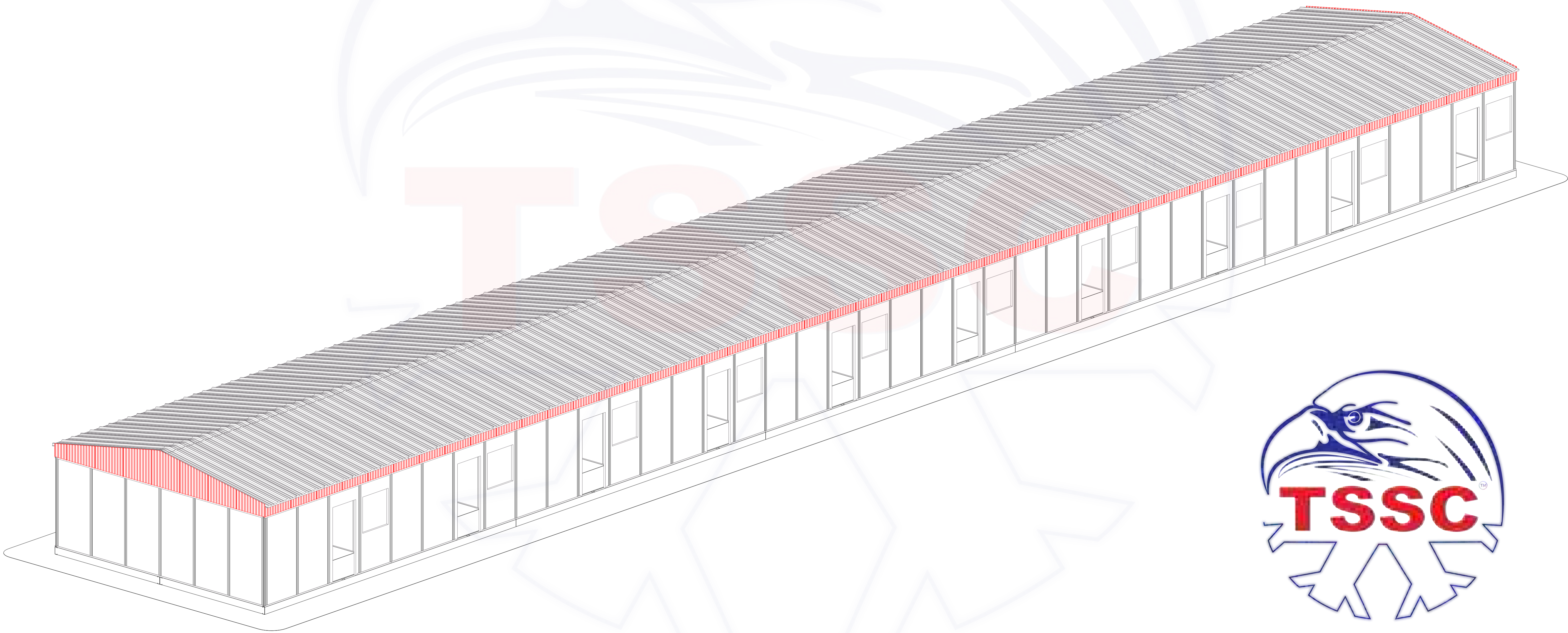
STEP 15: INSTALL THE REMAINING ROOF PANELS



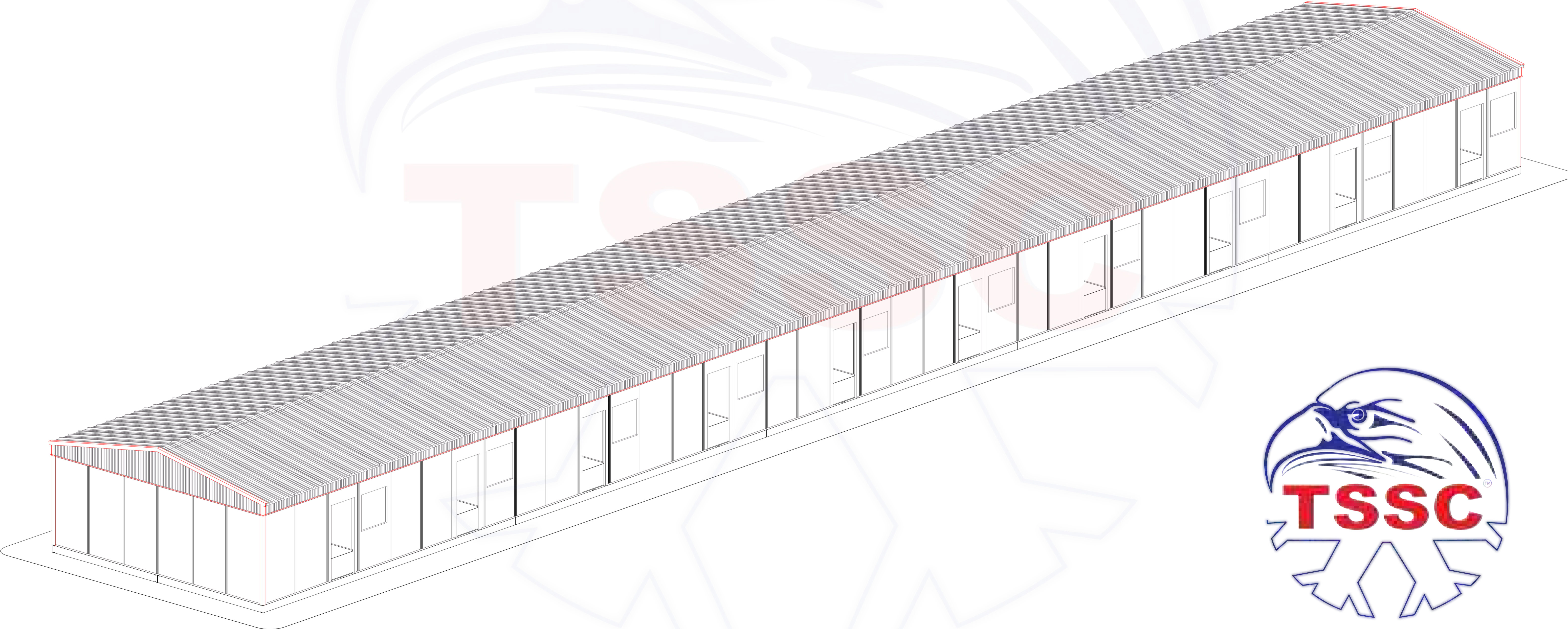
STEP 16: FIX THE ROOF RIDGE PROFILE



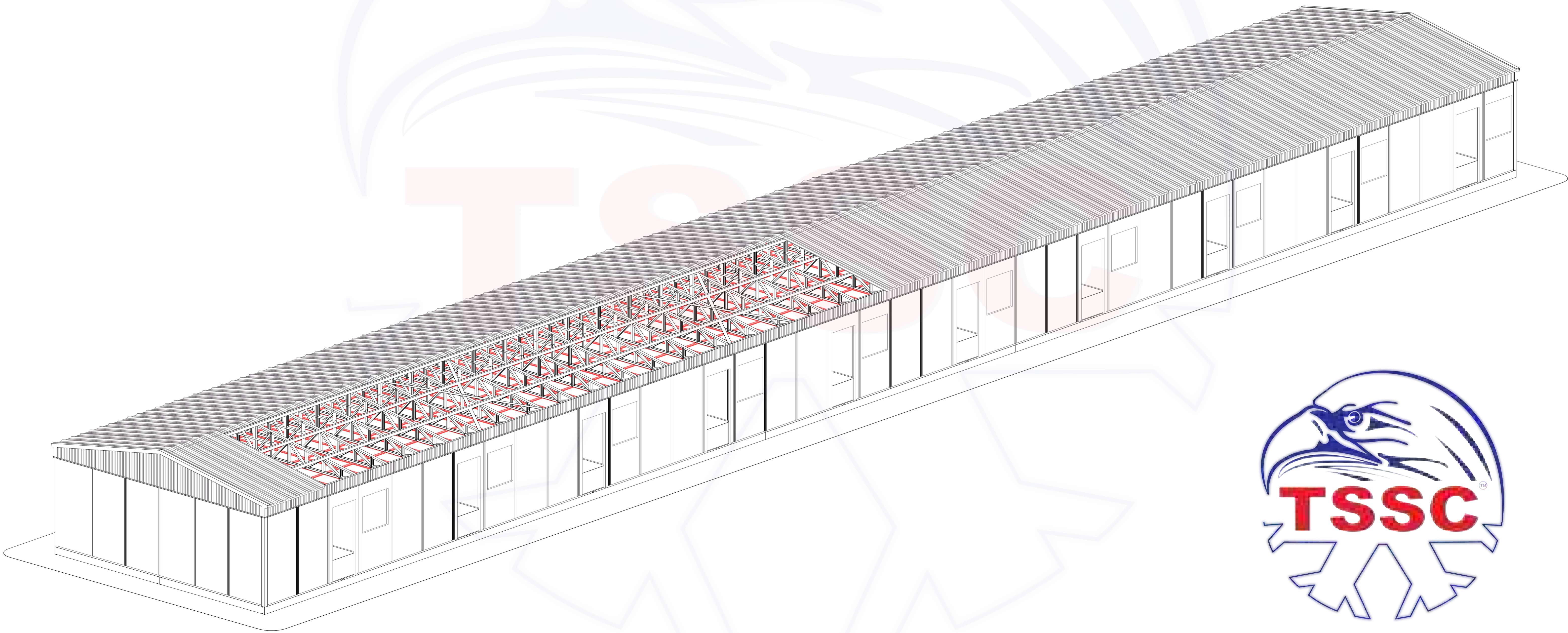
STEP 17: INSTALL THE WALL SHEETING ON GABLE AND EAVE SIDE



STEP 18: INSTALL THE FLASHINGS



STEP 19: CEILING WORKS



STEP 20: DOORS & WINDOWS INSTALLATION

