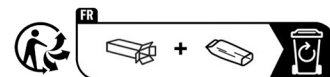


Assembly Manual v1.1
Z-AXIS LIFTING DEVICE

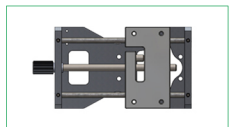


English

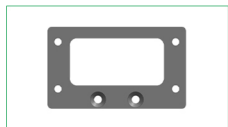
FDA CE FC    **RoHS** **MADE IN CHINA**

CONTENTS

Main Body

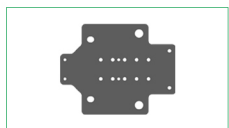


Sliding Plate ×1

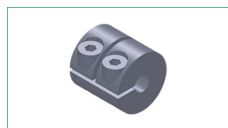


Fixing Plate ×1

Ortur Laser Master 2



Laser Backboard ×1



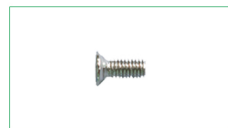
Coupling ×1



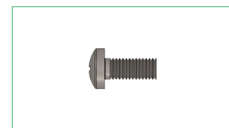
M3×7×11mm Pillar Washers ×2



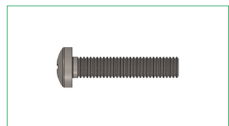
M3×20mm Self-tapping Screws ×4



M3x6mm Flat Cup Screws ×2



M3x10mm Screws ×4



M3x20mm Screws ×2



2.5mm Allen Wrench ×1



Support Blocks 3mm ×2



Support Blocks 5mm ×1

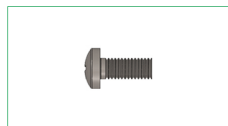
Ortur Laser Master 2 S2



Support Blocks 3mm ×2



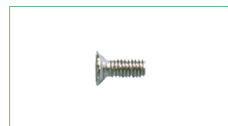
Support Blocks 5mm ×1



M3x10mm Screws ×4



M3×20mm Self-tapping Screws ×4



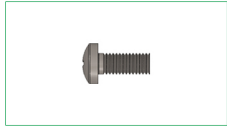
M3x6mm Flat Cup Screws ×2

Not all parts will be used, there are parts that are not needed for different models of machines.

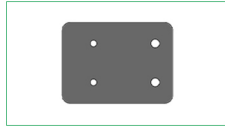
Ortur Laser Master 2 Pro



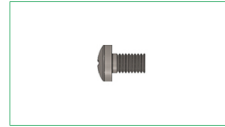
M3x6mm Flat Cup Screws ×2



M3x10mm Screws ×8

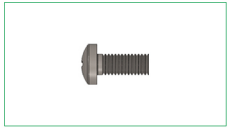


Y-axis Extension Plate ×1

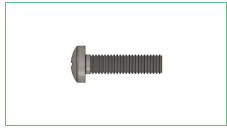


M2x4mm Screws ×2

Aufero Laser 1



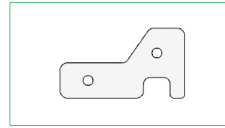
M3x10mm Screws ×4



M3x16mm Screws ×2

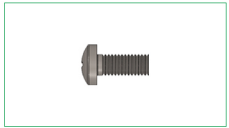


M3 T Nuts ×2



Limit Plate ×2

Aufero Laser 2



M3x10mm Screws ×8



M3x6mm Flat Cup Screws ×2

Not all parts will be used, there are parts that are not needed for different models of machines.

Aufero Laser 1

Assembly Steps (**NOTE:** The working area of the machine will be shortened to X180 x Y170 due to the addition of the Z-axis Lifting Device.)

