

**ORTUR**

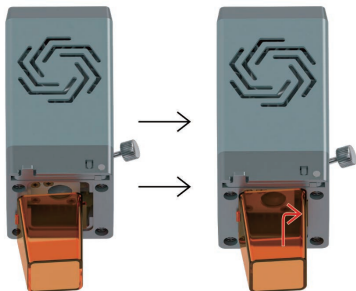


**OLM3 - Laser Module**



# Install the Laser Shield

1



First let the right long clip enter the long slot.

2

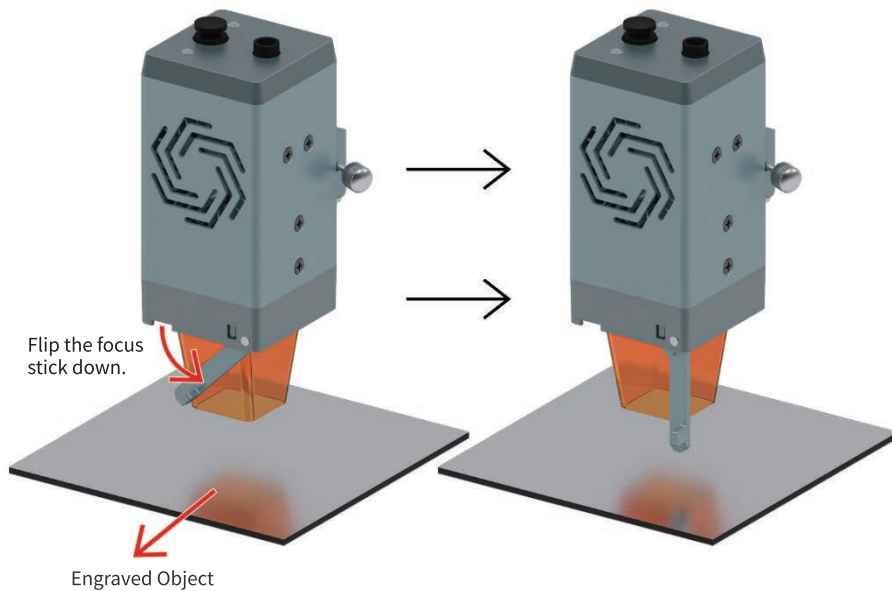
After the long clip is fixed, press the left side firmly so that the short clip enters the short slot.

Press the position of the arrow, do not press the short clip directly to avoid the risk of breakage!

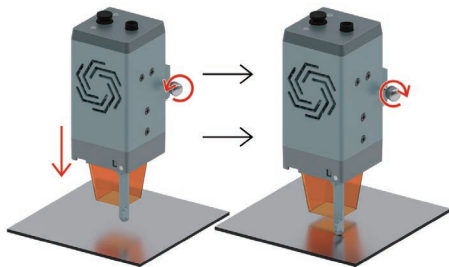


# How to find focus

1

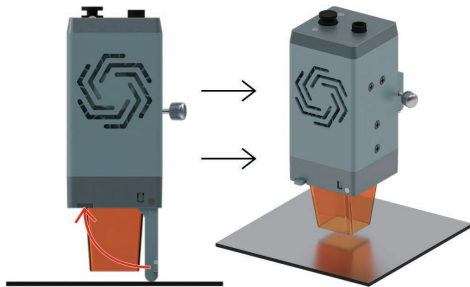


2



Loosen the thumb screw, let the laser module move down until the focus stick is against the engraved object, and then tighten the thumbscrew to fix the laser module.

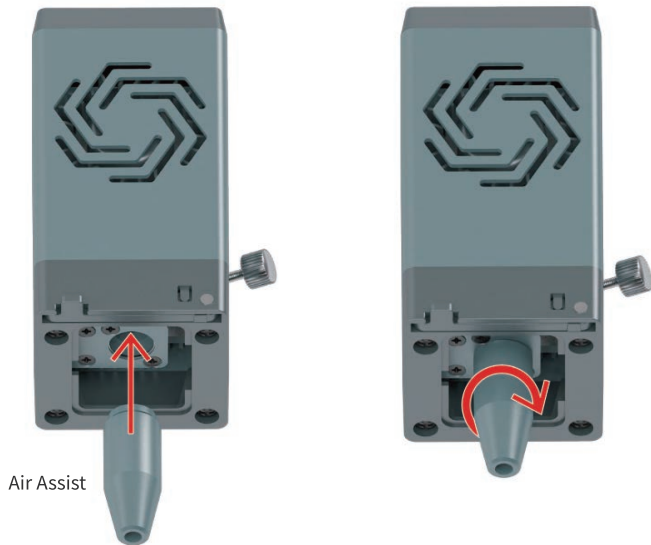
3



After focusing, you must put away the focus stick to avoid breaking the focus stick!

# How to air compressor

1



Tip: No need to install air assist when not using an air compressor.

2



Reinstall the laser shield.

3

Tip: When not using the air compressor, please install the rubber plug!



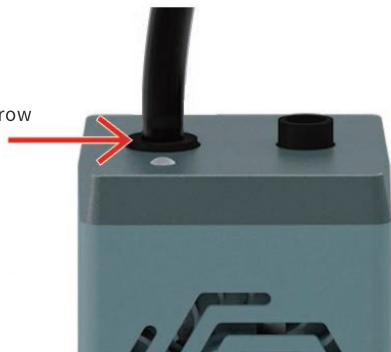
Remove the rubber stopper.



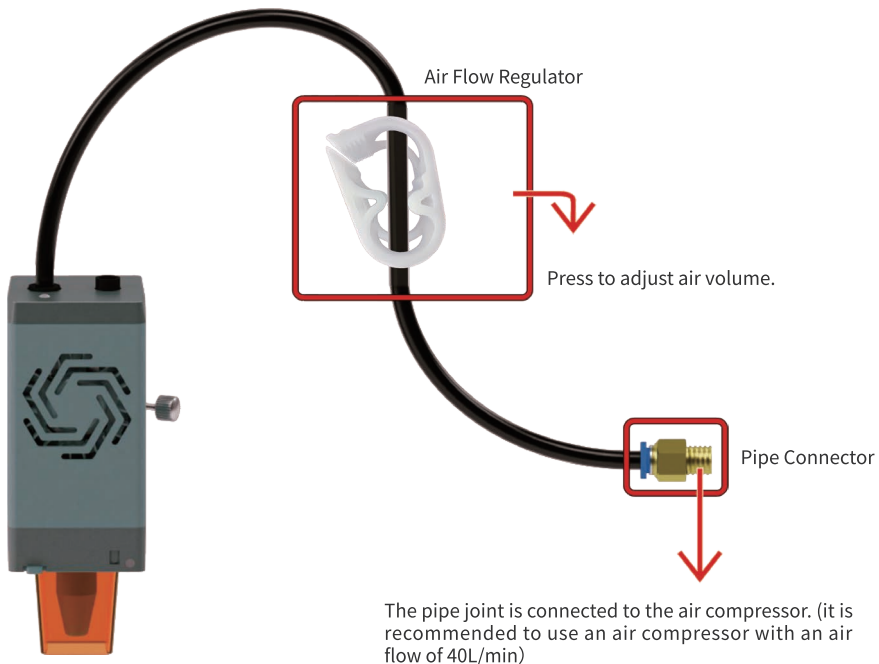
Air Pipe

Cut into two parts, one part is used to connect the laser module and the air flow regulator, and the other part is used to connect the air flow regulator and the pipe joint or the air compressor.

Press firmly on the position indicated by the arrow until the air pipe is fully inserted and released.

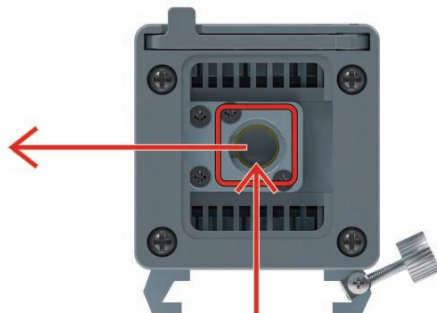






## Maintenance

Please clean the lens after every 30 hours of use of the machine or after a long period of inactivity to prevent the laser from being intercepted by the dust attached to the lens.



Use a medical swab and alcohol to wipe the lens.



Company: Dongguan Ortur Intelligent Technology Co., LTD.

Address: Building 4, No. 6, Tianheng Road, Changping Town,  
Dongguan City, Guangdong Province



[www.orturtech.com](http://www.orturtech.com)



Youtube



Instagram



Twitter



Facebook



Support



RoHS UK  
CA

**ORTUR**  
[www.orturtech.com](http://www.orturtech.com)

— MADE IN CHINA —