

Dresden 1-Light Large & Extra Large Outdoor Lantern

TFO1011, TFO1021 1.0

GENERATION LIGHTING
WALL

GENERAL PRODUCT INFORMATION:

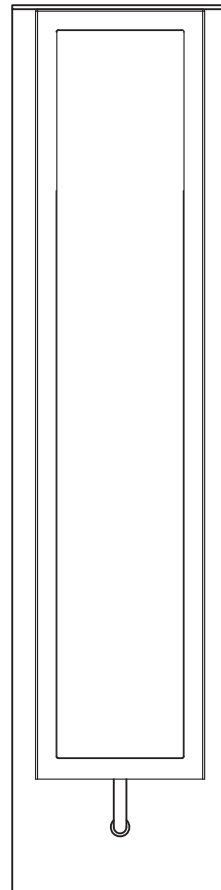
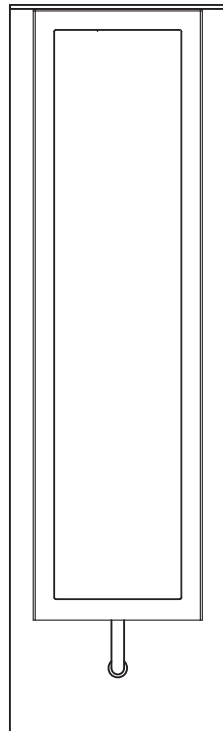
These fixtures are intended to be installed utilizing NEC compliant junction boxes.

This product is listed for wet locations.

This instruction shows a typical installation.

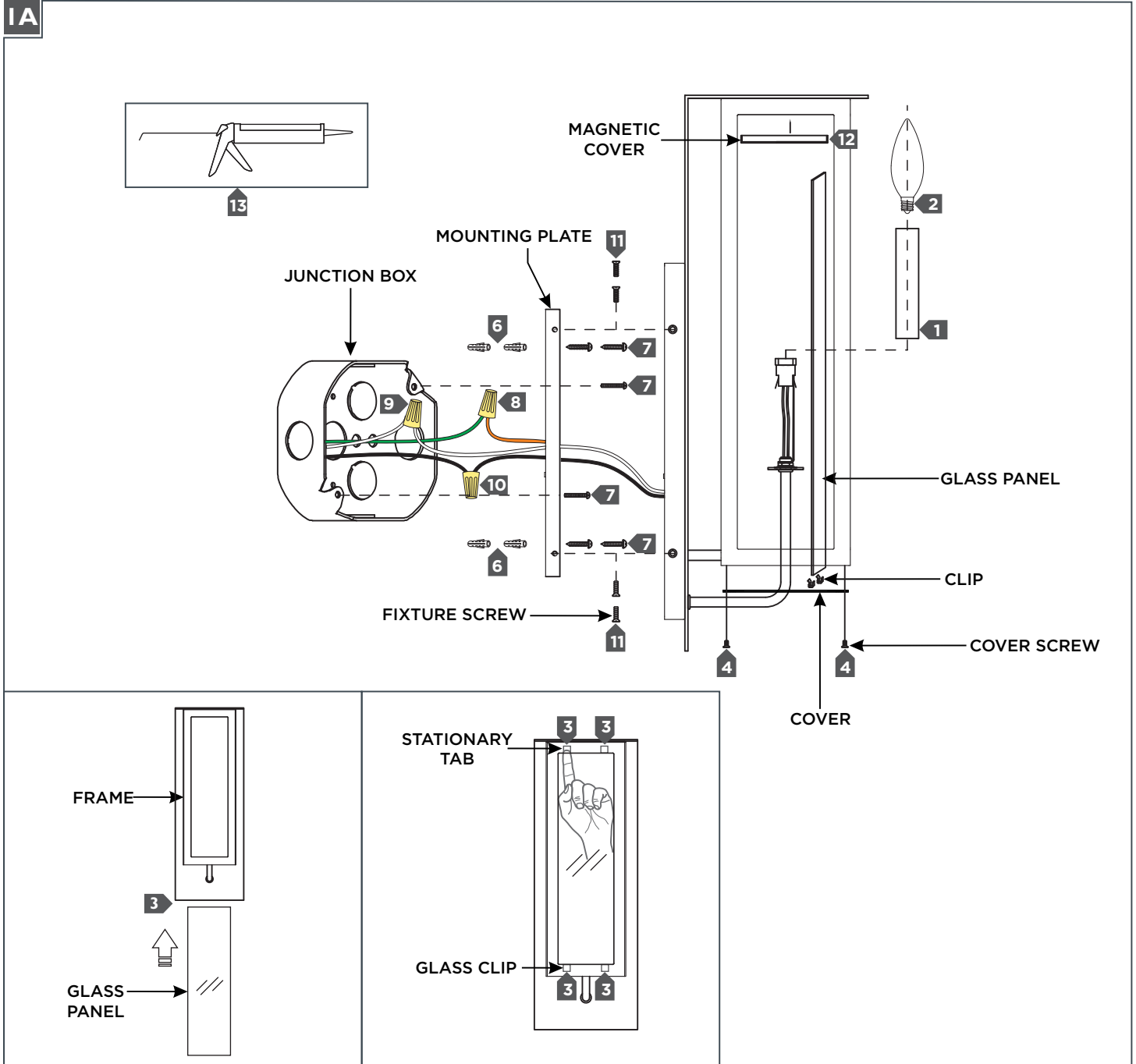
CAUTION - RISK OF FIRE
This product must be installed in accordance with the applicable installation code by a person familiar with the construction and operation of the product and the hazards involved.
Use minimum 90°C supply conductors.

SAVE THESE INSTRUCTIONS!



GENERATION LIGHTING
7400 Linder Ave., Skokie, IL 60077
T 847.410.4400 | F 847.410.4500
www.generationlighting.com

Install the Fixture



- 1** Install the candle tube by sliding it over the socket.
- 2** Screw the lamp into the socket. Refer to the label on the socket for Max Wattage Information.
- 3** Install the glass one panel at a time into the frame by first inserting it into the top stationary tab, position the panel in place, then secure them temporarily in place using the glass clips.
- 4** Install the cover on the bottom of the frame and secure it place with the cover screws.
- 5** Temporarily install the mounting plate to the junction box and mark the anchor locations through the holes on the mounting plate. Remove the mounting plate from the wall.
- 6** Drill appropriate sized holes at the marked locations and install the anchors.
- 7** Install the mounting plate back onto the mounting plate and secure it in place by screwing the anchor screws through the anchors.
- 8** Connect the fixture to a suitable ground in accordance to local electrical codes.
- 9** Connect the white fixture wire (square and/or rigid) to the neutral power line wire with a wire nut.
- 10** Connect the black fixture wire (round and/or smooth) to the hot power line wire with a wire nut.
- 11** Neatly place all the wires into the junction box, place the fixture base onto the mounting plate, and secure it in place with the fixture screws.
- 12** Place the magnetic cover into the top of the fixture interior. Ensure it the cover is secure.
- 13** For wet locations, caulk around the base of the fixture with waterproof construction sealant.