



Fortis 18399

project name:	<input type="text"/>
project location:	<input type="text"/>
specifier name:	<input type="text"/>
specifier location:	<input type="text"/>
quantity:	<input type="text"/>
fixture type:	<input type="text"/>

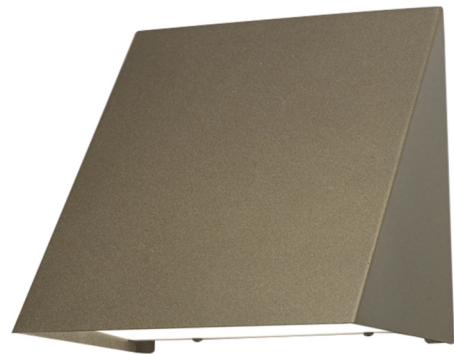
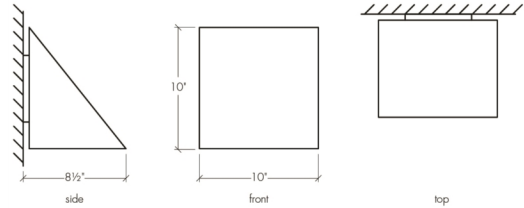
modifications:

Base Specs

10"h x 10"w x 8.5"d

Notes

Marine grade primer available — **±\$ Inquire.**





Fortis 18399

standard finish:

BA - Bronze Age
BK - Black
BP - Black Pearl
CB - Cast Bronze
CH - Chestnut
DI - Dark Iron
EB - Empire Bronze
MB - Medieval Bronze
NB - New Brass
SB - Smokey Brass
SP - Satin Pewter
SS - Smoked Silver

premium finish:

RCU - Raw Copper
Unfinished

lampping:

02: 16.8w Integrated LED, 2362 Initial Lumens, 3000K, 90 CRI, 120V, Standard Phase Dimming, UL/cUL Wet

04: 16.8w Integrated LED, 2362 Initial Lumens, 3000K, 90 CRI, 120V-277V, 0-10V Dimming, UL/cUL Dry/Damp

standard diffuser:

OA - Opal Acrylic

