

# INSTALLATION INSTRUCTION

## 791 –Indoor Wall Sconce

WS-79121/WS-79130

# dweLED

**CAUTION:** To prevent electrical shock, ensure electricity has been turned off at the circuit breaker before beginning.

- Read all instructions before installing.
- System is intended for installation by a licensed electrician in accordance with the National Electrical Code (NEC) and local regulations.
- When handling the fixture, do not apply pressure to the LEDs. Hold the fixture by the base only.
- Retain installation instructions for future maintenance reference.

**WARNING:** All parts must be used as indicated in these instructions. This product is designed for use only with the supplied parts and/or accessories designated for use by dweLED. Substitution of parts or accessories not designated for use with this product by dweLED could result in personal injury or property damage, and will void the warranty. Contact an authorized dealer or the manufacturer if any parts are damaged or missing.

**MAINTENANCE NOTE:** Coastal conditions may cause mineral and residue build-up on the fixture. We recommend that customers in coastal areas clean all external surfaces of the fixture once every two weeks with a wet cloth.

**MISE EN GARDE:** Pour éviter tout choc électrique, assurez-vous que le disjoncteur soit mis hors tension avant de commencer.

- Lisez toutes les instructions avant l'installation.
- Le système doit être installé par un électricien licencié conformément au code national de l'électricité (NEC), et également aux règlements locaux.
- Lors de la manipulation du luminaire, n'appuyez pas sur les LED. Tenez-le uniquement par la base.

**ATTENTION:** Toutes les pièces doivent être utilisées comme indiqué dans ces instructions. Ce produit est conçu pour être utilisé seulement avec les pièces et/ou accessoires fournis pour être utilisés avec les produits dweLED. Remplacer des pièces ou accessoires non conçus pour ce produit dweLED pourrait causer des dommages corporels ou matériels et pourrait également causer l'annulation de la garantie. Veuillez contacter un revendeur autorisé ou le fabricant si des pièces manquent ou sont endommagées.

**NOTE D'ENTRETIEN:** Les conditions côtières peut causer une accumulation de minéraux et de résidus sur le luminaire. Nous recommandons aux clients qui résident dans les zones côtières de nettoyer toutes les surfaces externes du luminaire une fois toutes les deux semaines avec un chiffon humide.

### HARDWARE

**A**



Wire Connector  
Qty: 3pcs+1Extra

**B**



Mounting Screw  
Qty: 1 Extra

**C**



Wood Screw  
Qty: 2pcs+1 Extra

**D**



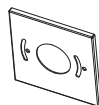
Plastic anchor  
Qty: 2pcs+1 Extra

**E**



Spacer  
Qty: 2pcs+1 Extra

**F**



Conversion plate  
Qty: 1 pc

**G**



Mounting ring  
Qty: 1 pc

**H**



Mounting screw  
Qty: 2 pcs

**I**



Screw  
Qty: 8pcs+1 Extra

dweLED.com  
Phone (800) 526.2588  
Fax (800) 526.2585

Headquarters/Eastern Distribution Center  
44 Harbor Park Drive  
Port Washington, NY 11050

Central Distribution Center  
1600 Distribution Ct  
Lithia Springs, GA 30122

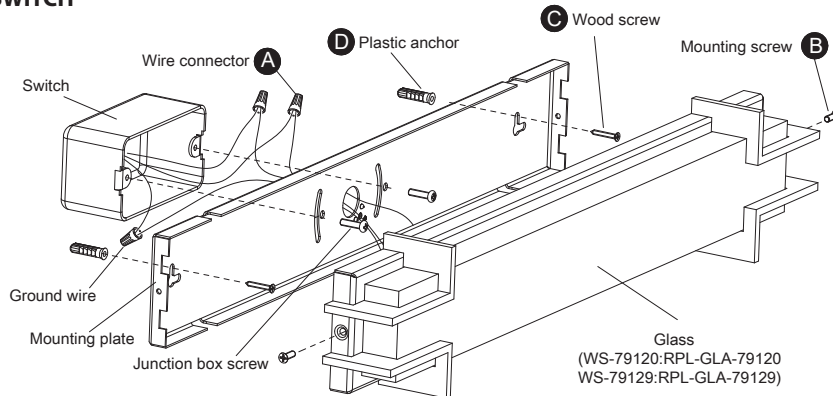
Western Distribution Center  
1750 Archibald Avenue  
Ontario, CA 91760



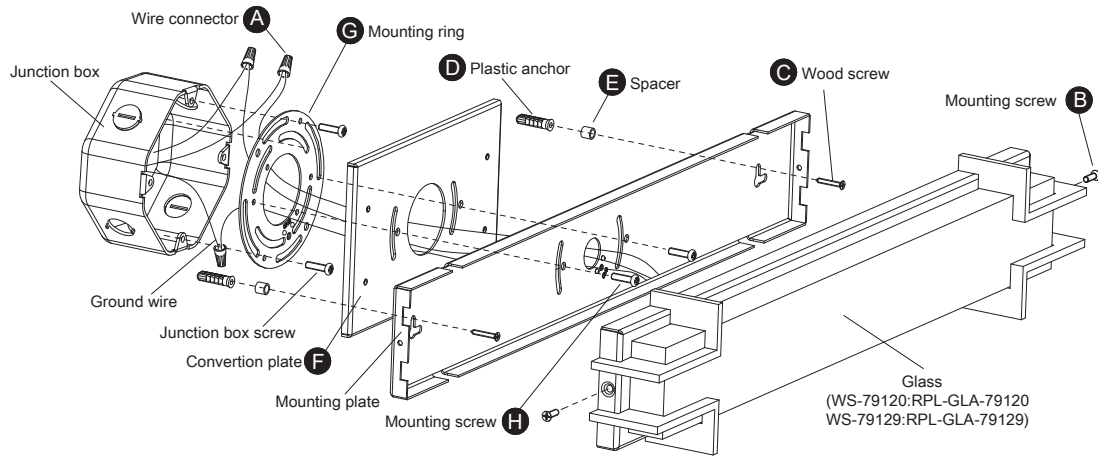
**INSTALLATION INSTRUCTION**  
**791 –Indoor Wall Sconce**  
 WS-79121/WS-79130

dweLED

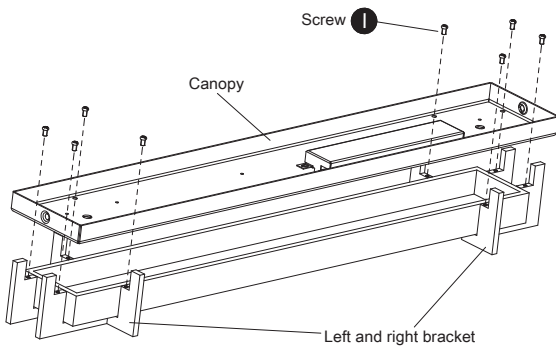
**Fig. 1 MOUNTING ON SWITCH**



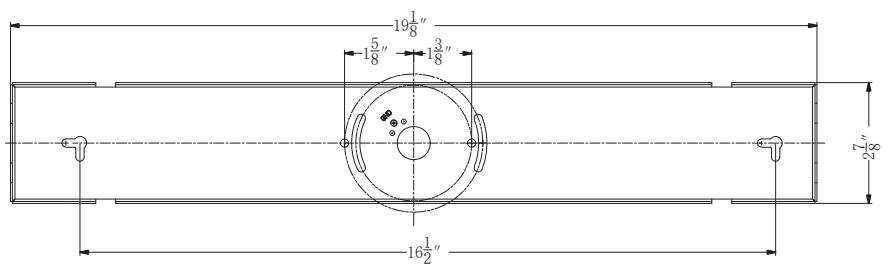
**Fig. 2 MOUNTING ON JUNCTION BOX**



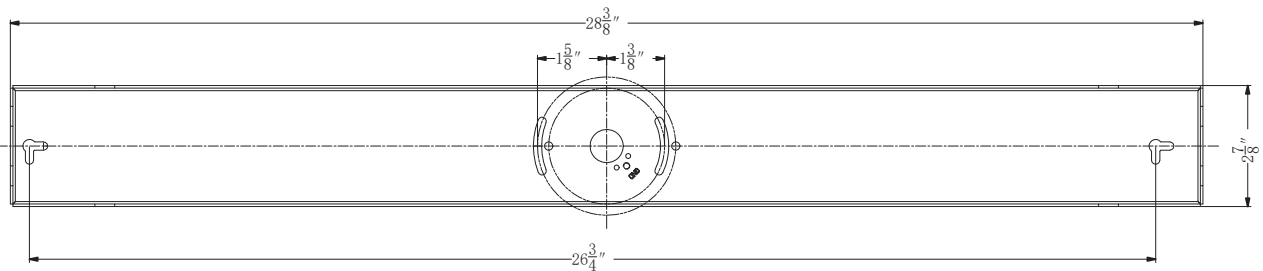
**Fig. 3**



**WS-79121  
Back Plate Dimensions**



**WS-79130  
Back Plate Dimensions**



dweLED.com  
 Phone (800) 526.2588  
 Fax (800) 526.2585

**Headquarters/Eastern Distribution Center**  
 44 Harbor Park Drive  
 Port Washington, NY 11050

**Central Distribution Center**  
 1600 Distribution Ct  
 Lithia Springs, GA 30122

**Western Distribution Center**  
 1750 Archibald Avenue  
 Ontario, CA 91760



**INSTALLATION INSTRUCTION**  
**791 –Indoor Wall Sconce**  
 WS-79121/WS-79130



**PREPARATION**

1. Shut off the power at the circuit breaker and remove existing fixture, including the crossbar.
2. Carefully unpack your new fixture and lay out all the parts on a clear area. Be careful not to lose any small parts necessary for installation.

**MOUNTING THE FIXTURE**

**MOUNTING ON SWITCH BOX (Fig. 1)**

3. Place the left and right brackets and glass as shown in the fig.3, then use small screws to fix the canopy and glass to the bracket (Fig.3).
4. Remove the mounting screw (B) from the canopy.
5. Drill holes in the wall aligned with the key-hole located in the mounting plate,insert the plastic anchor(D) to the wall.
6. Secure the mounting back plate to the junction box using standard junction box screws that comes with the junction box. Fasten the mounting back plate to the wall using the wood screw(C).

Note: (i) using any other non-original-manufacturer provided junction box screw may result in safety issue;

(ii) The side of the mounting plate marked "GND" must face out.

7. Connect the driver's input wires to junction box wires as shown (Fig. 2). Make sure that all wire connectors (A) are secure. If your outlet box has a green or bare copper ground wire, connect the driver's ground wire to it. Otherwise, connect the fixture's ground wire directly to the back plate using the GND screw provided. After wires are connected, tuck them carefully inside the junction box.
8. Secure the fixture to the mounting back plate using the mounting screw (B).

OR

**MOUNTING ON JUNCTION BOX (Fig.2)**

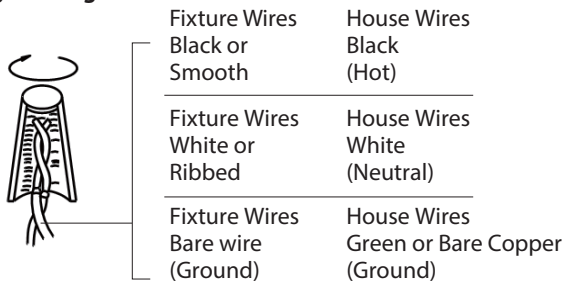
3. Place the left and right brackets and glass as shown in the fig.3, then use small screws to fix the canopy and glass to the bracket (Fig.3).
4. Remove the mounting screw (B) from the canopy.
5. Drill holes in the wall aligned with the key-hole located in the mounting plate,insert the plastic anchor(D) to the wall.
6. Secure the mounting ring(G) to the junction box using standard junction box screws that comes with the junction box.

Note: (i) using any other non-original-manufacturer provided junction box screw may result in safety issue;

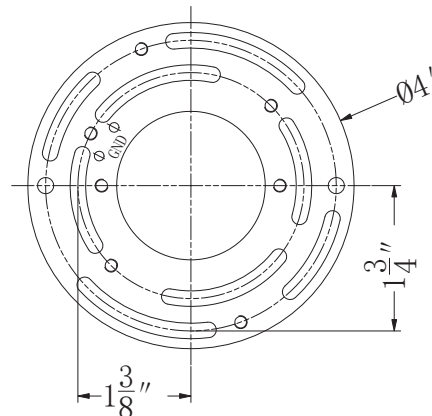
(ii) The side of the mounting ring marked "GND" must face out.

7. Place the mounting back plate and the conversion plate(F) onto the mounting ring,secure them with mounting screw(H).
8. Fasten the mounting back plate to the wall using the wood screw(C).
9. Connect the driver's input wires to junction box wires as shown (Fig. 4). Make sure that all wire connectors (A) are secure. If your outlet box has a green or bare copper ground wire, connect the driver's ground wire to it. Otherwise, connect the fixture's ground wire directly to the back plate using the GND screw provided. After wires are connected, tuck them carefully inside the junction box.
10. Secure the fixture to the mounting back plate using the mounting screw (B).

**Fig.4 Wiring**



**Mounting Ring Dimensions**



dweLED.com  
 Phone (800) 526.2588  
 Fax (800) 526.2585

Headquarters/Eastern Distribution Center  
 44 Harbor Park Drive  
 Port Washington, NY 11050

Central Distribution Center  
 1600 Distribution Ct  
 Lithia Springs, GA 30122

Western Distribution Center  
 1750 Archibald Avenue  
 Ontario, CA 91760

