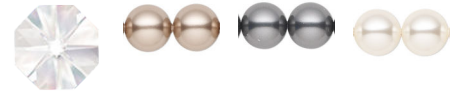



PRISCILLA
BC7110

Like long ropes of pearls worn on a special occasion, Priscillas exquisitely beaded trim work is enchanting and sophisticated. Suspended between the tip of each delicately arched metal arm and the base of the slim Bohemian crystal central column, the strands of pearl or crystal beads sway gently in space, reflecting light and creating animation. With a variety of metal finishes to select from, and trim work available in an array of pearl tones as well as clear cut crystal, Priscilla becomes the perfect complement or counterpoint to the space it illuminates.

OPTIONS


Heritage Crystal (H), PBZ Bronze Pearl (PBZ), PDK Dark Pearl (PDK), PWT Light Pearl (PWT)



-06, -22, -44, -48, -51

SPECIFICATIONS

Type:	Chandelier
↔ Width/Length:	36in / 91cm
↕ Height:	28in / 71cm
↓ Chain Length:	40in / 102cm
⬇ Hang Weight:	16lbs / 7.2kg
Bulb Count:	10
Bulb Info:	(10) E12, 60 MAX, B10**
Voltage:	110V

*Bulb Included **Bulb Not Included