



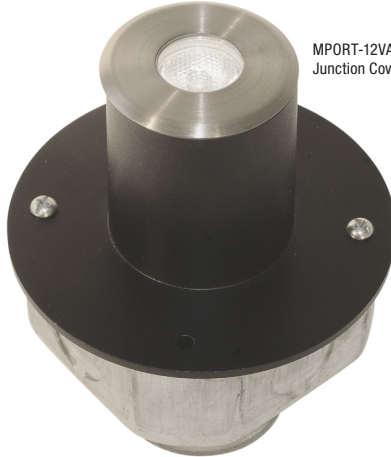
MPORT-12VAC-ST-SS



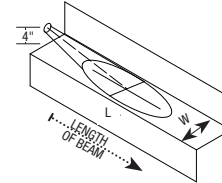
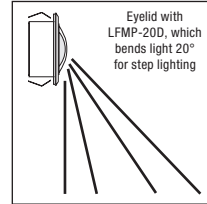
MPORT-12VAC-EL-SS



LFMP-20D
 20° Beam Tilt Lens
 (included with Eyelid)



MPORT-12VAC-ST-SS with
 Junction Cover MPORT-JC



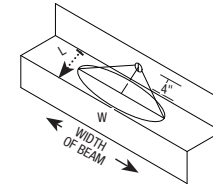
Wall Mounting

LENGTH	FC	WIDTH
3"	36.2	6"
6"	70.6	6.5"
9"	88.5	9"
12"	47.8	9.5"

EYE LID comes with 20° Tilt Film #LFMP-20D

Beam Angle
 16°

DIST.	FC	DIA.
2'	60.3	7"
4'	15.1	14"
6'	6.7	20"
8'	3.8	27"
10'	2.4	34"
12'	1.7	41"



Step Mounting

LENGTH	FC	WIDTH
3"	41	9.5"
6"	53.2	9.5"
9"	36	10"
12"	20	9"

EYE LID comes with 20° Tilt Film #LFMP-20D & Linear Spread Film #LFMP-LS (order separately)

DESCRIPTION:

Miniport LED is slim and can be recessed into a wall or floor using a Miniport junction box (sold separately, see page 2), which mounts to an octagon box or outdoor, wet-location electrical box. The fixture, with a 1 watt warm-white LED, features a 16 degree precise focus and tempered glass lens with a stainless steel, round beveled edge trim. Miniport is compatible with the TE-60L-12 power supply. The Miniport Eyelid version, which should be wall-mounted 4" from floor, includes LFMP-20D, a lens film to tilt the light beam 20 degrees. All Miniport versions include 5 year warranty.

FINISH:

Stainless Steel

LAMP SPECIFICATION:

1 Total Watts with driver, 12VAC LED, 3000K, 93 CRI Nichia Premium Chip, 47 lumens, 70% lumen maintenance based on 50,000 hours of operation

Dimming Information:

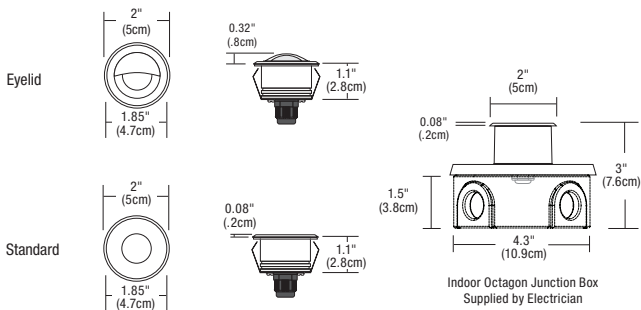
Dims with electronic low-voltage dimmer

Power Supply:

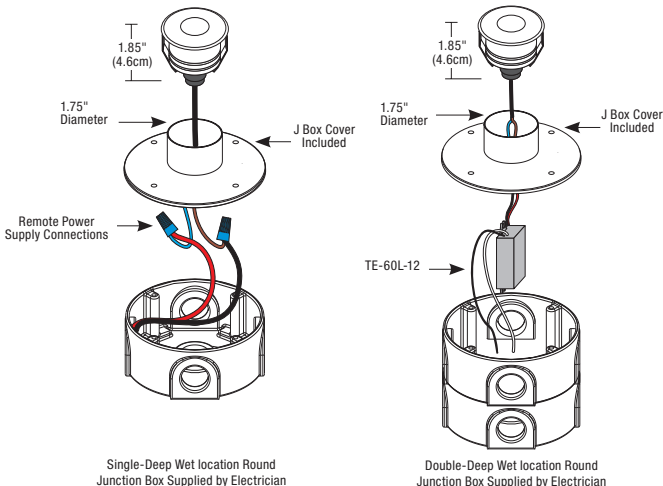
60 watt, 120 volt input, 12 volt AC output TE-60L-12

Weight:

1 lb (.45 kg)



Indoor Octagon Junction Box
 Supplied by Electrician

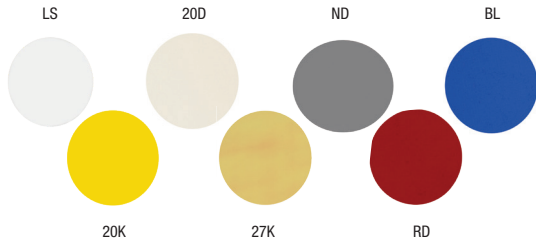


Single-Deep Wet Location Round
 Junction Box Supplied by Electrician

Double-Deep Wet Location Round
 Junction Box Supplied by Electrician

Product	Voltage	Trim	Finish
MPORT	12VAC	ST	SS
MPORT Miniport Head	12VAC 12 Volt AC	ST Surface Trim EL Eyelid	SS Stainless Steel

PROJECT	FIXTURE TYPE	DATE
---------	--------------	------



Film Lenses and Filters

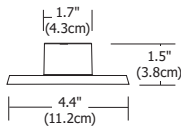
Add film lenses and filters to shape beam, change color or adjust color temperatures.

Lens Film		Lens or Color
LFMP	-	20D
LFMP Lens Film Miniport		20D Refracts beam 20° down 20K Dichroic 2000K Very Warm White 27K Dichroic 2000K + Color Correction Film = 2700K ND Neutral Density Filter dims light 50% RD Red Dichroic Film BL Blue Dichroic Film LS Linear Spread



Junction Cover

Use indoor with standard octagon electrical box or use outdoor with wet location electrical box.



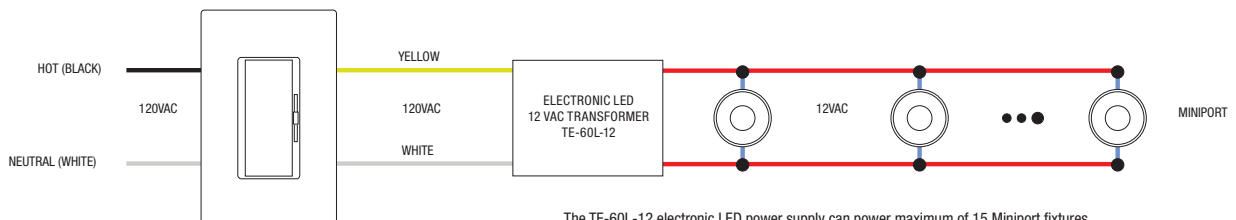
Product		Description
MPORT	-	JC
MPORT Miniport		JC Junction Cover



Power Supply/Driver

Power Supply (60W/12VAC) converts standard 120 volt line voltage to 12 volts and features built-in short-circuit protection. Fits inside an electrical junction box.

Product		Type		Voltage
TE	-	60L	-	12
TE Transformer Electronic		60L 60 Watt LED and halogen		12 12 Volt, AC



The TE-60L-12 electronic LED power supply can power maximum of 15 Miniport fixtures.

PROJECT		FIXTURE TYPE		DATE	
---------	--	--------------	--	------	--