

ORION Vanity
3-543-xx

oxygen

FIXTURE TYPE _____

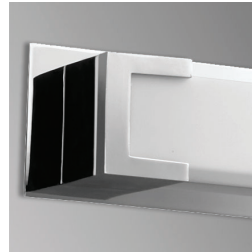
LOCATION _____

PROJECT _____

DATE _____

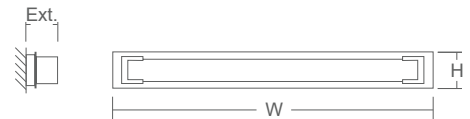


-24 Satin Nickel



-14 Polished Chrome

LIGHT SOURCE	1 x 11.6W LED, 3000K, CRI 90
LUMINAIRE POWER	14.2W at 120V
RATED LIFE	60000 hr RL
OPTIONAL COLOR TEMPERATURES	2700K, 3500K, 4000K
LUMEN OUTPUT	Delivered: 1233 lm (LM-79)
INPUT VOLTAGE	120V to 277V AC, 50/60Hz
DRIVER OUTPUT	350mA, 14.7W max
DIMMING	TRIAC and ELV dimming at 120V AC; 0-10V dimming, 100% to 10% current output
CONSTRUCTION	Plated Steel and Acrylic
DIFFUSER	Matte White Acrylic
FINISHES	Polished Chrome (-14), Satin Nickel (-24)
MOUNTING	4"x4" Square J-Box* with single device mud ring *Deep J-Box (Required to house driver)
STANDARDS	UL Dry/Damp listed, ADA Compliant, Conforms to UL STD 1598, Certified CAN/CSA, STD C22.2 No 250.0.



DIMENSIONS

W: 27.00"

H: 3.00"

Ext: 2.75"

M.C: 1.50" From Top of Fixture

Order example for standard fixture:

3-543-xx (x-Voltage - xxx-Sequence # - xx-Finish)

Order example for optional color temperatures: **3-543-2724**

27: 2700K, 35: 3500K, 40: 4000K

