

ELLIPSE Wall Sconce

3-567-xxx

oxygen

FIXTURE TYPE _____

LOCATION _____

PROJECT _____

DATE _____



-24 Satin Nickel



-15 Black



-24 Satin Nickel

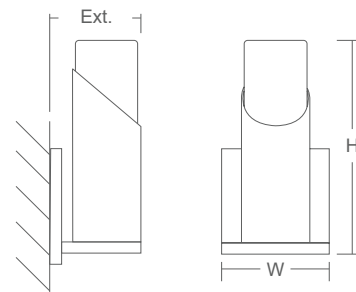
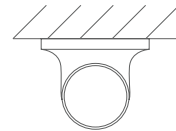


-1 White Opal Glass



-2 Matte White Acrylic

LIGHT SOURCE	1 x 6.2W LED, 3000K, CRI 90
LUMINAIRE POWER	7.1W at 120V
RATED LIFE	60000 hr RL
OPTIONAL COLOR TEMPERATURES	2700K, 3500K, 4000K
LUMEN OUTPUT	Delivered: (-1) Glass: 132 lm (LM-79) Delivered: (-2) Acrylic: 157 lm (LM-79)
INPUT VOLTAGE	120V to 277V AC, 50/60Hz
DRIVER OUTPUT	180mA, 7.6W max
DIMMING	TRIAC and ELV dimming at 120V AC; 0-10V dimming, 100% to 10% current output
CONSTRUCTION	Plated Steel and Acrylic / Glass
METAL FINISH / DIFFUSER	(-115) White Opal Glass / Black (-120) White Opal Glass / Polished Nickel (-124) White Opal Glass / Satin Nickel (-215) Matte White Acrylic / Black (-220) Matte White Acrylic / Polished Nickel (-224) Matte White Acrylic / Satin Nickel
MOUNTING	4" Octagonal J-Box* 4"x4" Square J-Box* 4"x4" Square J-Box* with single device mud ring *Deep J-Box (Required to house driver)
STANDARDS	UL Dry/Damp listed, ADA Compliant, Conforms to UL STD 1598, Certified CAN/CSA, STD C22.2 No 250.0.



DIMENSIONS

W: 4.75"

H: 9.625"

Ext: 4.00"

M.C: 7.50" From Top of Fixture

NOTE: Adjustable (360° rotating) threads allow for the diffuser to be mounted facing any direction desired. Diffuser can be faced forwards, backwards, or any other direction on a 360° axis.

Order example for standard fixture:

3-567-xxx (x-Voltage - xxx-Sequence # - x-Diffuser - xx-Finish)

Order example for optional color temperatures: **3-567-27124**

27: 2700K, **35:** 3500K, **40:** 4000K

