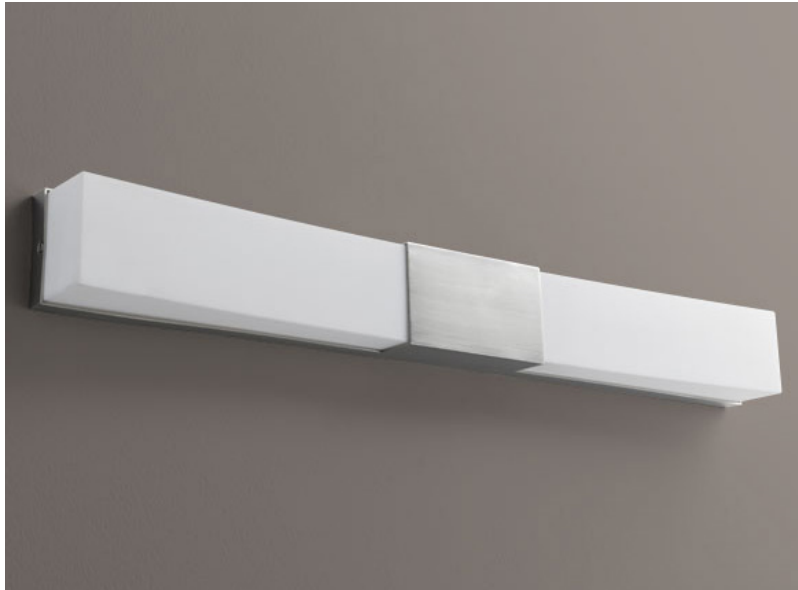


CRESCENT Vanity
3-582-24

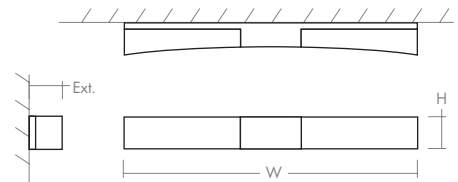
oxygen

FIXTURE TYPE _____ LOCATION _____
PROJECT _____ DATE _____



-24 Satin Nickel

LIGHT SOURCE	2 x 12.1W LED, 3000K, CRI 90
LUMINAIRE POWER	28.9W at 120V
RATED LIFE	60000 hr RL
OPTIONAL COLOR TEMPERATURES	2700K, 3500K, 4000K
LUMEN OUTPUT	Delivered: 1864 lm (LM-79)
INPUT VOLTAGE	120V to 277V AC, 50/60Hz
DRIVER OUTPUT	700mA, 29.4W max power
DIMMING	TRIAC and ELV dimming at 120V AC; 0-10V dimming, 100% to 1% current output
CONSTRUCTION	Plated Steel and Acrylic
DIFFUSER	- Matte White Acrylic
FINISHES	Satin Nickel (-24)
MOUNTING	2" x 3" J-Box, 4" Octagonal J-Box, 4" Square J-Box with a single device mud ring
STANDARDS	UL Dry/Damp listed, ADA Compliant, CEC Title 24 Compliant, Conforms to UL STD 1598, Certified CAN/CSA STD C22.2 No 250.0.



DIMENSIONS

W:	30.50"
H:	3.50"
Ext:	3.00"
M.C:	1.75" From top of fixture

Order example for standard fixture:

3-582-24 (x- Voltage - xxx-Sequence # - xx-Finish)

3: 120V to 277V

Order example for optional color temperatures: **3-582-2724**

27: 2700K, **35:** 3500K, **40:** 4000K

