

ADELPHI Vanity
3-555-xx

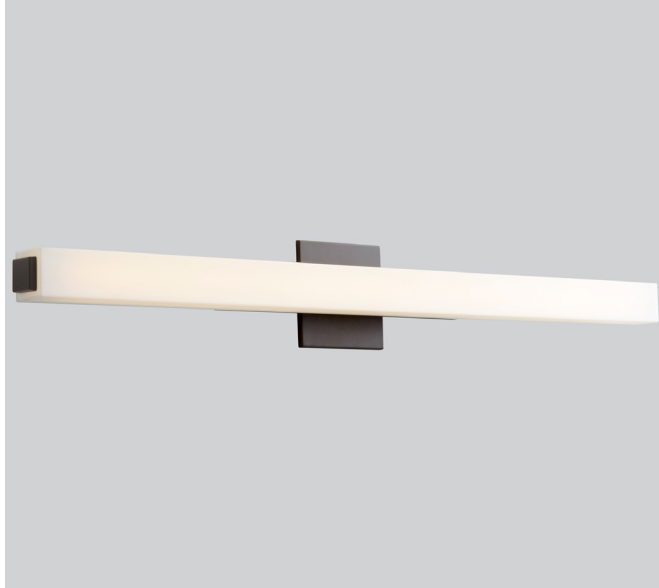
oxygen

FIXTURE TYPE _____

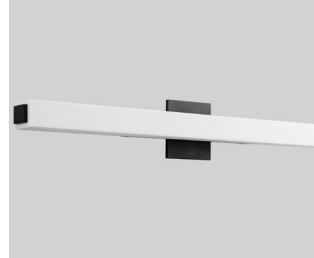
LOCATION _____

PROJECT _____

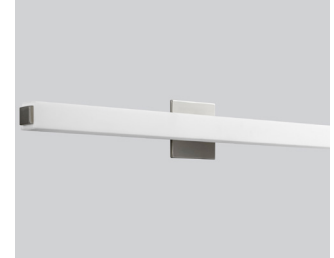
DATE _____



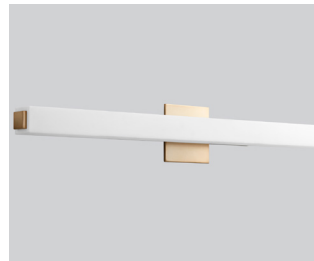
-22 Oiled Bronze



-15 Black



-24 Satin Nickel



-40 Aged Brass

LIGHT SOURCE 23.4W LED, 3000K, CRI 90

LUMINAIRE POWER 26.4W at 120V

RATED LIFE 60000 hr RL

OPTIONAL COLOR TEMPERATURES 2700K, 3500K, 4000K

LUMEN OUTPUT Delivered: 2546 lm (LM-79)

INPUT VOLTAGE 120V to 277V AC, 50/60Hz

DRIVER OUTPUT 700mA, 29.4W max power

DIMMING TRIAC and ELV dimming at 120V AC;
 0-10V dimming, 100% to 10% current output

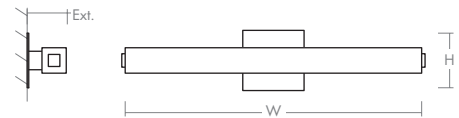
CONSTRUCTION Plated Steel and Acrylic

DIFFUSER - Matte White Acrylic

FINISHES Black (-15), Oiled Bronze (-22), Satin Nickel (-24), Aged Brass (-40)

MOUNTING 4" Octagonal J-Box, 4" Square J-Box,
 4" Square J-Box with single device mud ring,
 4" Square J-Box with round mud ring (2.75" center to center mounting)

STANDARDS cUL Damp Listed, ADA Compliant, Conforms to UL STD 1598,
 Certified CAN/CSA STD C22.2 No 250.0.



DIMENSIONS

W: 36.00"

H: 4.75"

Ext: 3.50"

M.C: 2.37" From top of fixture

Order example for standard fixture:

3-555-24 (x- Voltage - xxx-Sequence # - xx-Finish)

3: 120V to 277V

Order example for optional color temperatures: **3-555-2724**

27: 2700K, **35:** 3500K, **40:** 4000K

