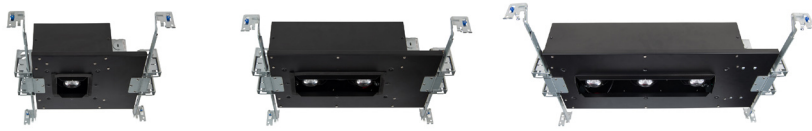


# OCULARC 2" MULTIPLE SPOTS

New Construction Housing - MT-21, MT-22, MT-23

# WAC LIGHTING

Responsible Lighting®



Fixture Type:

Catalog Number:

Project:

Location:

## SPECIFICATIONS

**Construction:** Die-cast light engine. 20 gauge cold rolled steel housing.

**Input:** 120V - 277V AC 50/60 Hz.

**Dimming:** 100% - 5% TRIAC, ELV (120V)  
100% - 5%, 0-10V (120-277V)

**Light Source:** High output 3-step Mac Adam Ellipse COB  
Rated life of 50,000 hrs

**Mounting:** Accommodates ½"-1" ceiling thickness.

**Operating temp:** -4°F to 104°F (-20°C to 40°C)

**Standards:** UL & cUL, Airtight, Title 24 JA8-2019 Compliant.

Housings (Order Trim Separately)	Model	Power	Beam	Color Temp	CRI
	<b>MT-2109</b> New construction IC Rated, Airtight	8.5W			
	<b>MT-2115</b> New construction Non-IC, Airtight	15W			
	<b>MT-2209</b> New construction IC Rated, Airtight	17W			
	<b>MT-2215</b> New construction Non-IC, Airtight	30W	<b>S</b> 16° <b>N</b> 30° <b>F</b> 50°	<b>927</b> 2700K <b>930</b> 3000K <b>935</b> 3500K <b>940</b> 4000K	90 90 90 90
	<b>MT-2309</b> New construction IC Rated, Airtight	25.5W			
	<b>MT-2315</b> New construction Non-IC, Airtight	45W			

**waclighting.com**  
 Phone (800) 526.2588  
 Fax (800) 526.2585

**Headquarters/Eastern Distribution Center**  
 44 Harbor Park Drive  
 Port Washington, NY 11050

**Central Distribution Center**  
 1600 Distribution Ct  
 Lithia Springs, GA 30122

**Western Distribution Center**  
 1750 Archibald Avenue  
 Ontario, CA 91760

# OCULARC 2" MULTIPLE SPOTS

New Construction Housing - MT-21, MT-22, MT-23

# WAC LIGHTING

Responsible Lighting®

**ACCESSORIES** Each light engine accomodates accessory optical film and one lens or honeycomb louver

**ACCESSORY HOLDER** sold separately

<b>LENS-11-HLD</b>	Required for use with any lens or accessory
--------------------	---

**GLARE CONTROL ACCESSORIES** sold separately

<b>LENS-11-HCL</b>	Honeycomb Louver
--------------------	------------------

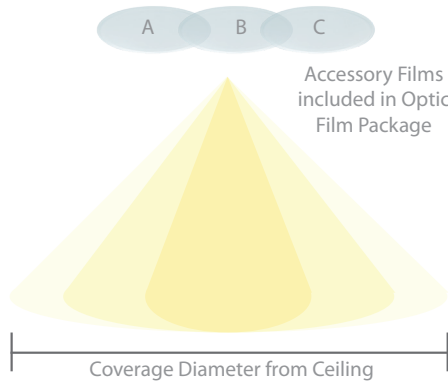
**LENS ACCESSORIES** sold separately

<b>LENS-11</b>	<b>AMB</b>	Amber
	<b>RED</b>	Red
	<b>FR</b>	Frosted
	<b>SPR</b>	Spread
	<b>BEL</b>	Beam Elongating

**ACCESSORY OPTIC FILMS** sold separately

<b>MT-2-FILM</b>		
Optic Film Package: includes 3 films (A, B, C)		
<b>LENS-11-HLD</b> Required (sold separately)		

Primary Optic	Accessory Film	Resulting Beam
S (16°)	A	25°
S (16°)	B	45°
S (16°)	C	55°
N (30°)	A	35°
N (30°)	B	55°
N (30°)	C	65°
F (50°)	A	52°
F (50°)	B	70°
F (50°)	C	80°



**COVERAGE DIAMETER FROM 8' CEILING IN FEET**

Primary Optic	No Film	+ Film A	+ Film B	+ Film C
Spot	2'	3.5'	6.5'	8.5'
Narrow	4.5'	5'	8.5'	10'
Flood	7.5'	8'	11'	13.5'

**COVERAGE DIAMETER FROM 10' CEILING IN FEET**

Primary Optic	No Film	+ Film A	+ Film B	+ Film C
Spot	3'	4.5'	8.5'	10.5'
Narrow	5.5'	6.5'	10.5'	12.5'
Flood	9.5'	10'	14'	17'

Above charts represent beam distribution only. Footcandle values should be considered in addition to meet project requirements.

**REPLACEMENT HEADS (INCLUDES: ONE HEAD & LED)**

Model	Beam	Color Temp
4MT2-S927-BK	Spot	2700K
4MT2-S930-BK		3000K
4MT2-S935-BK		3500K
4MT2-S940-BK		4000K
4MT2-N927-BK	Narrow Flood	2700K
4MT2-N930-BK		3000K
4MT2-N935-BK		3500K
4MT2-N940-BK		4000K
4MT2-F927-BK	Flood	2700K
4MT2-F930-BK		3000K
4MT2-F935-BK		3500K
4MT2-F940-BK		4000K

**REPLACEMENT DRIVERS (ONE DRIVER PER LIGHT ENGINE)**

Model	Power	Rating
<b>D-MT2-9</b>	8.5W	IC
<b>D-MT2-15</b>	15W	Non-IC

**wacighting.com**

Phone (800) 526.2588  
Fax (800) 526.2585

**Headquarters/Eastern Distribution Center**

44 Harbor Park Drive  
Port Washington, NY 11050

**Central Distribution Center**

1600 Distribution Ct  
Lithia Springs, GA 30122

**Western Distribution Center**

1750 Archibald Avenue  
Ontario, CA 91760