

NOLA
SF57704
 SEMI FLUSH

PROJECT



SF57704-BK
 Black



SF57704-BK/GO
 Black/Glossy Opal
 Glass

SPECIFICATION DETAILS

Fixture Dimensions	D3-5/8" x H7-1/2"
Lamp Type	Incandescent, A19, Medium Base
Wattage	1 x 40W
Voltage	120V
Shade Details	Steel Shade
Glass Details	Opal Glass
Location	Dry
Bulbs Included	No
Illumination Direction	BK-Down; BK/GO-Omni-directional;
Canopy Dimensions	D5-5/8" x H7/8"
Material	Steel; Steel + Glass;
Paint Finish	BK02; WH01;

* For custom options, consult factory for details.

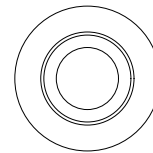
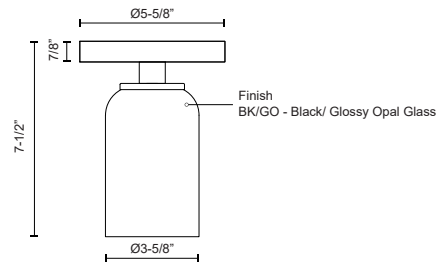
* For warranty information, please visit www.kuzcolighting.com/warranty

DESCRIPTION

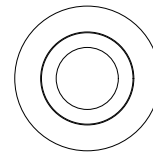
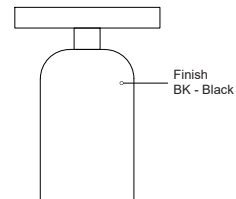
Meet Nola, where modern design meets accessibility in a stunning array of fixtures. This versatile family boasts a sleek, socket-based design, marrying the elegance of domed metal or Glossy Opal glass cylindrical shades with the allure of exposed bulbs. Nola's simple, timeless shapes effortlessly elevate any space, from a gracefully balanced chandelier to a single, focused downlight. Whether you're looking to make a statement or create an inviting ambiance, Nola offers the perfect blend of style and functionality.

- Simple, classic shape
- Matte Black Finish
- Matte Black Metal or Glossy Opal Glass shades
- Recommended bulb A19, Medium Base

Black/ Glossy Opal Glass Finish



Black Finish



COMMENT

KUZCO

CANADA: 19054 28TH AVENUE - SURREY, BC V3Z 6M3
 USA: 3035 E. LONE MOUNTAIN ROAD - LAS VEGAS, NV 89081

WWW.KUZCOLIGHTING.COM

© 2024 KUZCO LIGHTING. ALL RIGHTS RESERVED.

