

ADP001CH/BN/BZ

INSTALLATION SHEET

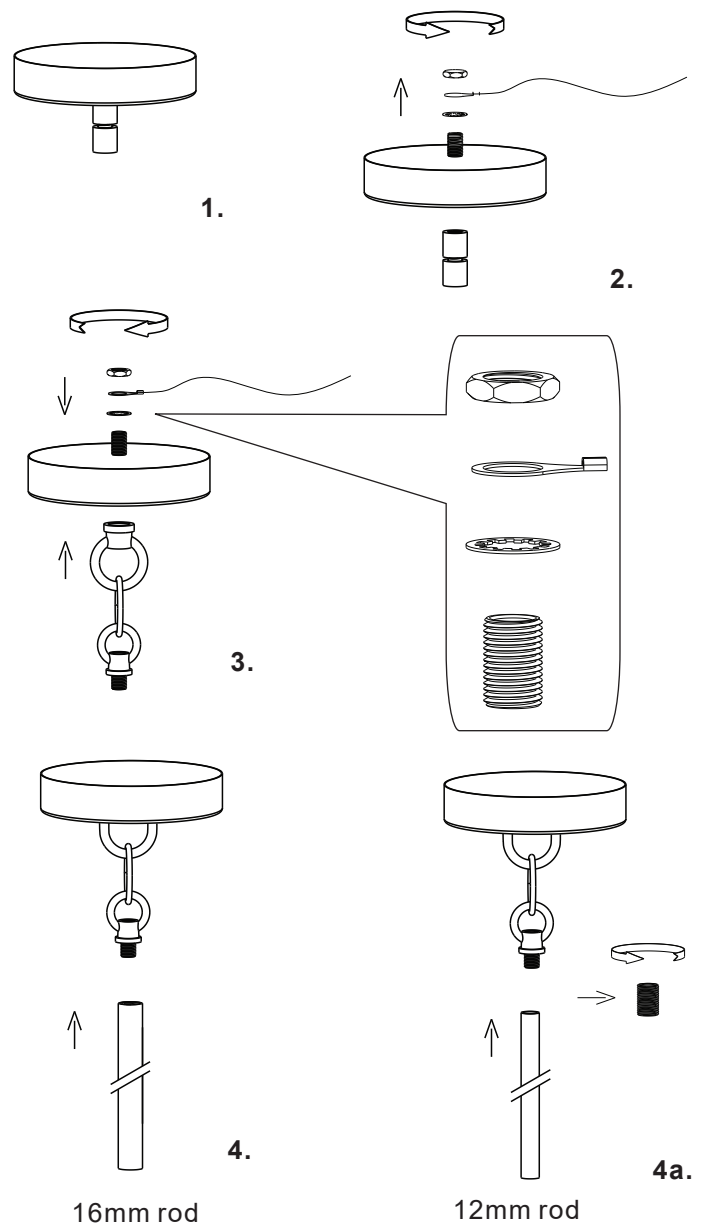
Adaptor for sloped ceiling

- 1.** Remove the canopy from its original packaging
- 2.** Untighten the large nut (counter clockwise) inside the canopy and remove lower metal piece, keeping threaded metal, locking washer, ground wire and nut.
- 3.** Attach ADP001 larger ring to the threaded metal piece to the halfway point. Then push the other half of the threaded metal through the hole of the canopy (flat bottom side). Then on the inside of the canopy attached the locking washer, ground wire and nut to the threaded metal piece. Tighten nut (clockwise) until tight, **DO NOT OVER TIGHTEN.**
- 4.** If attaching 16mm rod just attach the rod to the ADP001 small ring until tight.
- 4a.** If attaching a 12mm rod, unscrew the larger threaded metal piece from the ADP001 small ring and underneath there is a smaller metal screw which the rod can be attached to until tight.
- 5.** You have now completed the installation of the ADP001, proceed with the fixture instruction included in the box.

START FROM HERE

- Make sure power is completely off at the fuse box.
- Have your fixture installed by a qualified licensed electrician
- Prepare everything in clear area.
- Wear gloves at all times during this installation.
- Read instructions carefully before you start assembly.
- Keep this instruction sheet for future reference.

Technical Support: 1-855-855-8926



KUZCO

19054 28th Avenue Surrey, BC Canada V3Z 6M3
 T: 604 538 7162 TF: 1-855 85 KUZCO F: 604 538 7196
 W: kuzcolighting.com
 20181127