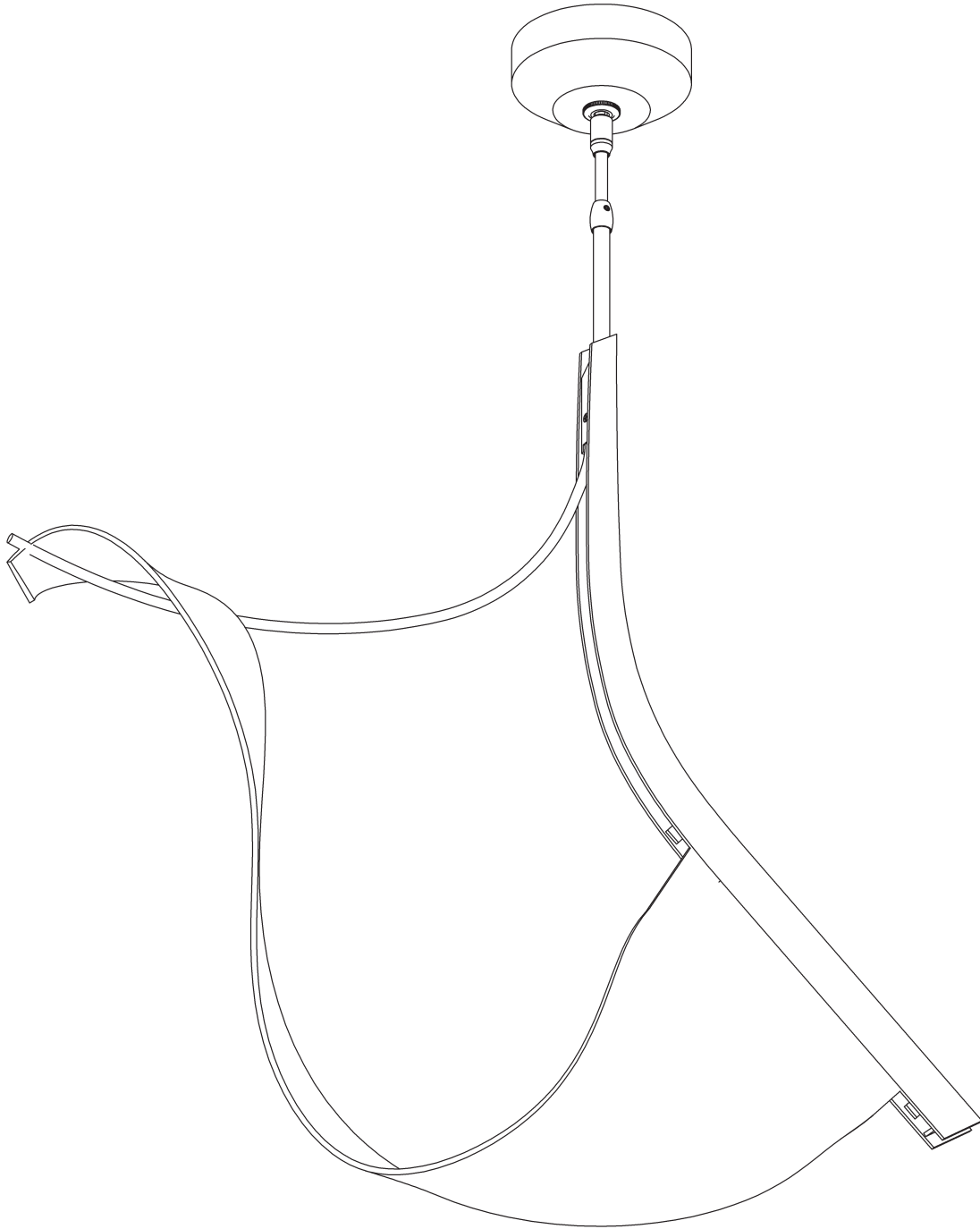


ASSEMBLY & INSTALLATION INSTRUCTIONS

A642

Sling Pendant 139825



Component Parts

- A Fixture**
- B Fixture Pipe**
- C Crossbar**
- D Driver**
- E Cupped Washer**
- F Ground Screw**
- G Fixture Bracket**
- H # 8 Screw (2)**
- I Canopy Pipe**
- J Canopy**
- K Canopy Ring**
- L Plastic Sleeve**
- M Clutch**
- N Set Screw**



Sling Pendant 139825

CAUTION: FAILURE TO INSTALL THIS FIXTURE PROPERLY MAY RESULT IN SERIOUS PERSONAL INJURY OR DEATH AND PROPERTY DAMAGE. We recommend installation by a licensed electrician. This product must be installed in accordance with applicable installation code(s), by a person familiar with the construction and operation of the product and the hazards involved.*

Please Note: After installation extra hardware and accessories are possible; our kits are used on multiple products.

To Install Fixture (Figures 1 & 2)

CAUTION: BE SURE POWER IS OFF AT THE MAIN BREAKER BOX PRIOR TO INSTALLATION.

1. Carefully unpack the fixture from the carton. Do not remove plastic or bubble wrap around acrylic. These will keep it protected while installing fixture.
2. Using two machine screws (not provided), fasten the crossbar (C) & driver (D) to the electric box (Figure 1).

Note: A new electric box comes with screws. When replacing a fixture, retain the existing screws for use with the new fixture.

3. Using suitable wire connectors (not provided), connect driver wires (D) to supply wires (white to white supply, black to black supply). Run a pigtail from the crossbar (C) to the junction box using green ground screw (F) and cupped washer (E).

CAUTION: MAKE SURE WIRE CONNECTORS ARE TWISTED ON SECURELY AND NO BARE WIRE IS EXPOSED.

4. Slide canopy ring (K) and canopy (J) over fixture pipe (B) so that they rest on fixture (A). Smaller diameter side of canopy ring (K) should be oriented up towards the canopy (J).
5. Thread wires from the fixture pipe (B) through the canopy pipe (I).
6. Unscrew the clutch (M) from the fixture pipe (B); slide it across the wires and onto the canopy pipe (I). It may be necessary to loosen set screw (N). Follow this with the plastic clutch sleeve (L), oriented so the tapered end of the clutch sleeve nests in the clutch (Figure 2).
7. Slide the canopy pipe (I) into the fixture pipe (B) as far as necessary to give you the total length of the fixture which you desire. Be careful not to scratch the pipe surface and to pull excess wire up through the canopy pipe (I). There must be a minimum 1-1/2" of inner pipe inside the outer pipe.
8. Tighten set screw (N) in clutch (M) firmly with hex wrench provided.
9. Using #8 screws (H), that are shipped in crossbar (C), fasten fixture bracket (G) to crossbar (C) taking caution not to pinch any wires.
10. Using provided wire connectors; attach fixture wires to driver (D) DC output wires (red to red, black to black).

Note: Wire connectors are shipped attached to driver output wires. Fixture wires must be stripped before inserted into provided wire connector.

11. Hold canopy (J) close to ceiling and connect all ground wires (bare copper or green to bare copper or green). Push wires back into electric box.

CAUTION: MAKE SURE WIRE CONNECTORS ARE TWISTED ON SECURELY AND NO BARE WIRE IS EXPOSED.



Sling Pendant 139825

12. Slide canopy (J) against ceiling, and secure with canopy ring (K).

CAUTION: BE SURE NO WIRES ARE PINCHED BETWEEN THE CANOPY AND THE CEILING.

13. Remaining packaging materials can now be removed.

14. Restore electricity at the main breaker.

Tips for Cleaning Acrylic:

- **DO NOT** use products that contain ammonia, alcohol, or abrasives such as Windex and other commercial cleaners.
- **DO NOT** use coarse sponges or pads.

RECOMMENDED:

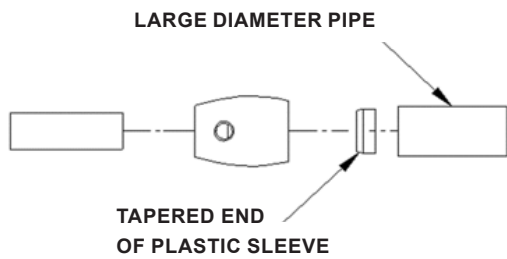
Use a soft cotton cloth with warm water or a polish dedicated especially for acrylic.



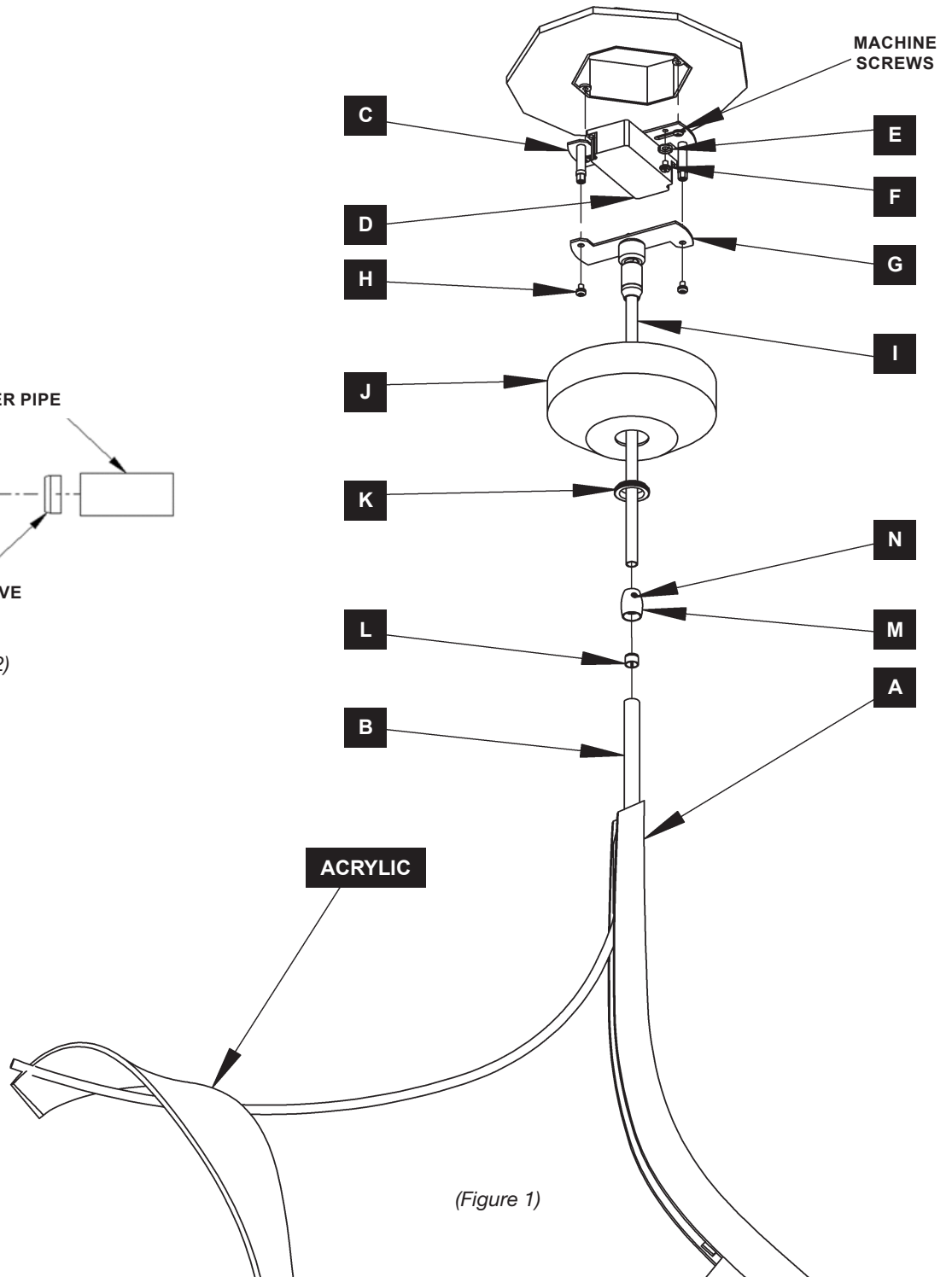
ASSEMBLY & INSTALLATION INSTRUCTIONS

A642

Sling Pendant 139825



(Figure 2)



(Figure 1)

If you need further assistance, or find that you are missing any parts, please contact the dealer from which you purchased this product. We hope you enjoy your fixture!

*** Hubbardton Forge will not be liable for injury or damage caused by improper installation, lamping or use of this fixture.**