

Fixture Type: _____

Catalog Number: _____

Project: _____

Location: _____

Esprit Bathroom Sconce 3000K

Model & Size	Color Temp & CRI	Watt	LED Lumens	Delivered Lumens	Finish
WS-69815 15"	3000K 90	10.7W	845	636	BN Brushed Nickel CH Chrome

Example: **WS-69815-BN**

DESCRIPTION

High-performance LED modules. Slim, geometric profile.

FEATURES

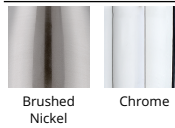
- LED modules positioned closer to diffuser for broader spread of illumination
- Driver installed within the Junction Box, driver dimension: 2.76" x 1.26" x 1.18"
- 5 year warranty

SPECIFICATIONS

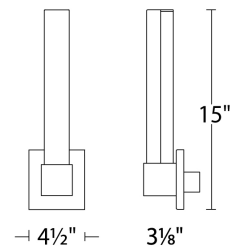
Color Temp:	3000K
Input:	120-277 VAC, 50/60Hz
CRI:	90
Dimming:	ELV: 100-10%, ELV: 100-5%
Rated Life:	50000 Hours
Mounting:	Can be mounted on wall in all orientations
Standards:	ETL, cETL Damp Location Listed
Construction:	Aluminum body with etched acrylic diffuser



FINISHES



LINE DRAWING



WS-69815

Fixture Type: _____

Catalog Number: _____

Project: _____

Location: _____

Esprit Bathroom Sconce 3000K

Model & Size	Color Temp & CRI	Watt	LED Lumens	Delivered Lumens	Finish
WS-69826 26"	3000K 90	20.1W	1784	1240	BN Brushed Nickel CH Chrome

Example: **WS-69826-BN**

DESCRIPTION

High-performance LED modules. Slim, geometric profile.

FEATURES

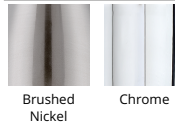
- LED modules positioned closer to diffuser for broader spread of illumination
- Driver installed within the Junction Box, driver dimension: 2.76" x 1.26" x 1.18"
- 5 year warranty

SPECIFICATIONS

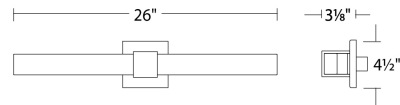
Color Temp:	3000K
Input:	120-277 VAC, 50/60Hz
CRI:	90
Dimming:	ELV: 100-10%, ELV: 100-5%
Rated Life:	50000 Hours
Mounting:	Can be mounted on wall in all orientations
Standards:	ETL, cETL Damp Location Listed
Construction:	Aluminum body with etched acrylic diffuser



FINISHES



LINE DRAWING



WS-69826

Fixture Type: _____

Catalog Number: _____

Project: _____

Location: _____

Esprit Bathroom Sconce 3000K

Model & Size	Color Temp & CRI	Watt	LED Lumens	Delivered Lumens	Finish
WS-69838 38"	3000K 90	29.2W	2712	2136	BN Brushed Nickel CH Chrome

Example: **WS-69838-BN**

DESCRIPTION

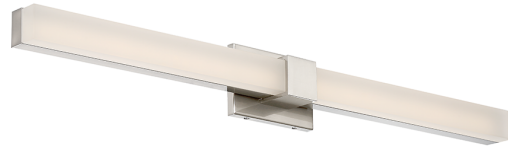
High-performance LED modules. Slim, geometric profile.

FEATURES

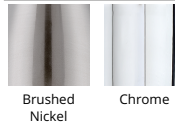
- LED modules positioned closer to diffuser for broader spread of illumination
- Driver installed within the Junction Box, driver dimension: 2.76" x 1.26" x 1.18"
- 5 year warranty

SPECIFICATIONS

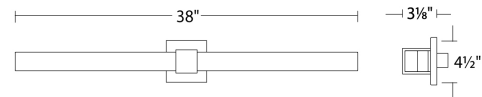
Color Temp:	3000K
Input:	120-277 VAC, 50/60Hz
CRI:	90
Dimming:	ELV: 100-10%, ELV: 100-5%
Rated Life:	50000 Hours
Mounting:	Can be mounted on wall in all orientations
Standards:	ETL, cETL Damp Location Listed
Construction:	Aluminum body with etched acrylic diffuser



FINISHES



LINE DRAWING



WS-69838