

E26 8.5W

SPECIFICATIONS & TECHNICAL DATA

The 120V EmeryAllen E26 retrofit lamp is an energy efficient alternative to incandescent E26 base lamps. It offers similar light output to a 120V, 70W incandescent (850lm) and is suitable for use in most 120V E26 fixtures.

Base Type	E26
Material	Ceramic + PC
Input Voltage	100-130V AC
Wattage	8.5
CRI	90+
Brightness	850 lumens
Lumens/Watt	100
Color Temperature	2700K & 3000K
R9	52
R13	96
Halogen Equivalent	70W
Beam Angle	360 degrees
Life	25,000 hours
Warranty	Limited Lifetime*

Available Models:

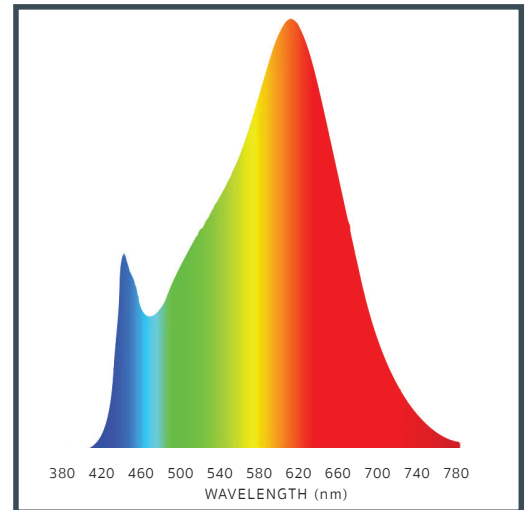
- EA-E26-8.5W-001-279F-D (2700K)
- EA-E26-8.5W-001-309F-D (3000K)

Dimming:

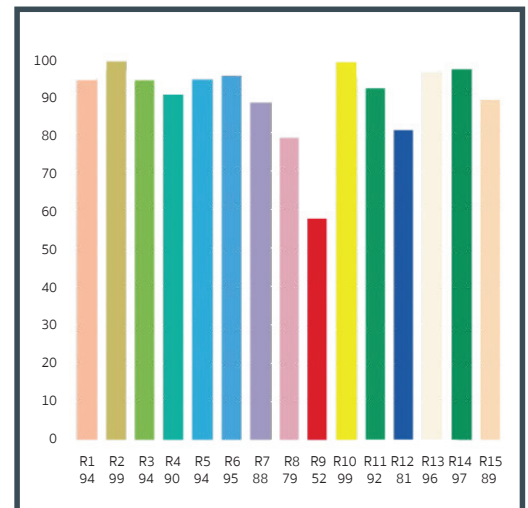
Dimmable with most incandescent and LED dimmers.



SPECTRAL DISTRIBUTION



CRI VALUES R1-R15



120V
SERIES

