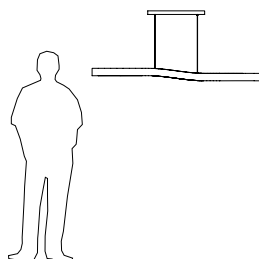
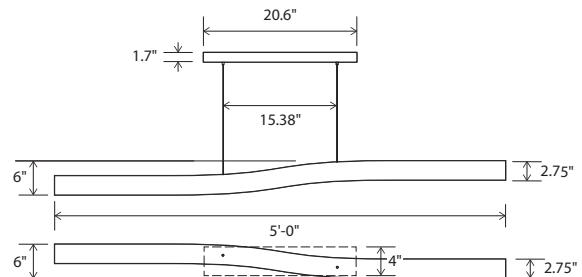


Light and delicate, subtly unique while simple, the Camur must be experienced to really be appreciated. The gentle curve appears from the bottom just the same as it does from the side: but the perspectives found between the two intrigue.

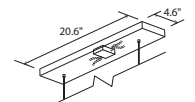
Nick Sheridan,
Designer



Camur linear pendant



- Dimensions: 5'0" x 2.75", 2.75"
- Materials: solid wood, polymer
- Product weight: 6 lb
- Light source: integrated LED
- Light output: 2500 Lumens (source)
- Light color: 2700 K or 3500 K
- Color accuracy: 90+ CRI
- Power usage: 35 W
- Dimmable (see driver below)
- Brushed aluminum (CM-006) Camur canopy included
- Canopy dimensions: 20.6" x 4.6", 1.7"
- Wood camur canopy covers are available:
- Walnut (CM-001) wood camur canopy cover:
part # 60-150-005W
- Dark stained walnut (CM-002) wood camur canopy cover:
part # 60-150-005D
- See website for more canopy information
- 6'-0" drop length, field adjustable
- Suitable for a sloped ceiling
- Wood grain will vary
- Specifications subject to change



linear canopy, brushed aluminum



walnut (CM-001)



dark stained walnut (CM-002)



MATERIAL & FINISH OPTIONS

	Camur part # 07-210-	
Wood Body		
walnut (CM-001)	W	
dark stained walnut (CM-002)	D	
Lamping*		
2700 K LED	27	
3500 K LED	35	
Driver		
120 V AC input voltage		
TRIAC, ELV & 0-10 V dimming	P1	
277 V AC input voltage		
TRIAC, ELV & 0-10 V dimming	P2	

*Available in 3000K, 4000K and other color temperatures upon request

The true beauty of the Camur is difficult to appreciate in print. When experiencing this fixture in person you begin to see the subtlety and grace of its vertical and horizontal movements. As you walk around this fixture the shape will morph from a beautiful curve to a straight line.

We have created a video to help celebrate these details at:
cernogroup.com/products/camur/