

BUSTER+PUNCH

LONDON

[product.]

ELECTRICITY / 1G-4G PLATE

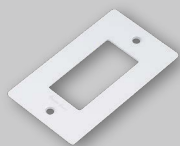
[with. **INFILLS.**]

[detail. **COIN SCREW.**]

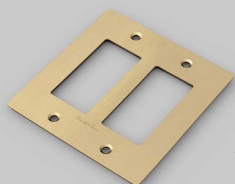
[born. **LONDON.**]

[region. **NORTH AMERICA.**]

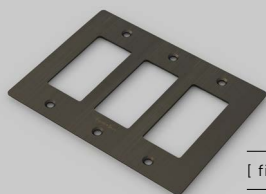
Decorative cover plate sets in a variety of quality finishes, complete with flush fitting infills. Designed to be completed with range of module inserts to suit a broad spectrum of requirements for lighting control, power supply and device charging. Always finish with our signature details kit & coin screws.



[finish. **WHITE.**]



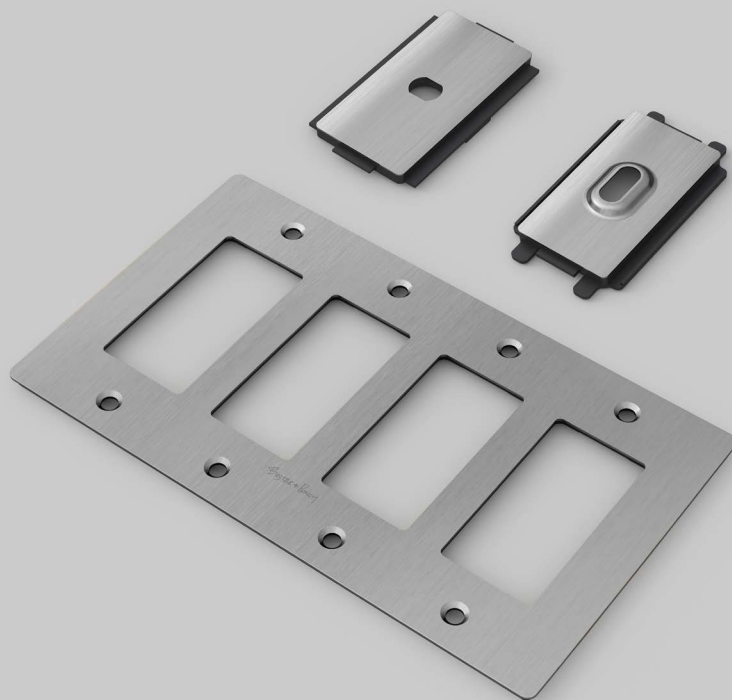
[finish. **STEEL.**]



[finish. **BRASS.**]



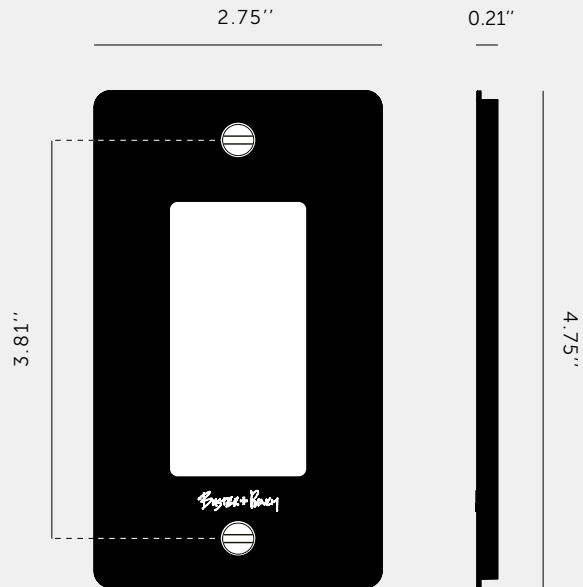
[finish. **BLACK.**]



[finish. **STEEL.**]

[type. **1G PLATE.**]

[info. **MEASUREMENTS.**]



[info. **SPECIFICATIONS.**]

Our Metal Electricity range is made from stainless steel plates, coated with an electrophoretic paint process and with a Buster + Punch logo printed in clear ink.

Style: 1G metal plate + infills.

For use with class 1 modules only / Must be earthed.






Recommended Back Box:

Standard flush mounted 1G back box. See dimensions of chosen module(s) for required back box depth.

[info. **FINISH & SKU NUMBERS.**]

[finish.]

[US.]

 White	NPL-023061
 Steel	NPL-07292
 Brass	NPL-05289
 Smoked Bronze	NPL-09291
 Black	NPL-053060

[info. **CARE INSTRUCTIONS.**]

Wipe with damp cloth with no loose hairs, avoid using any chemicals. All finishes are prone to aging.

[info. **CERTIFICATION.**]

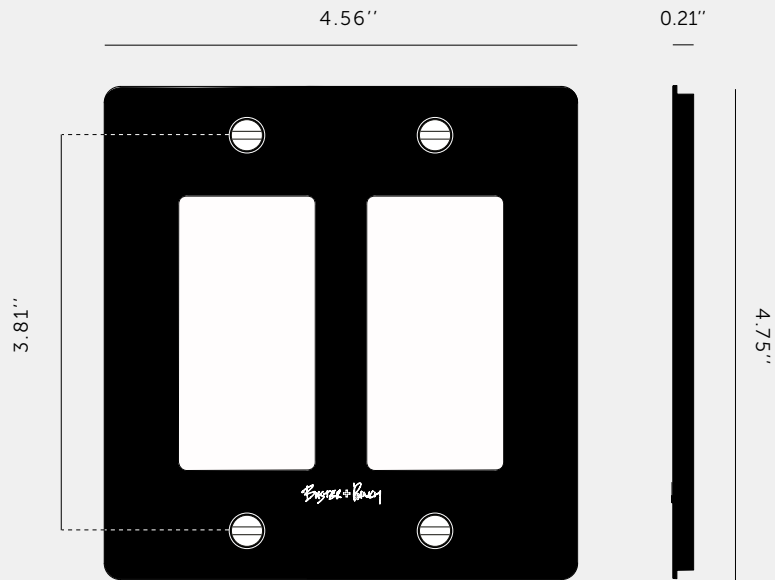
Plates: Underwriters Laboratories cULus listed for use throughout North America: E507052.

[please. **NOTE.**]

DISCLAIMER: Always consult a trade professional when installing this plate. Buster + Punch is not responsible for the usage or feasibility of installation requirements. This product is not suitable for damp or wet environments.

[type. **2G PLATE.**]

[info. **MEASUREMENTS.**]



[info. **SPECIFICATIONS.**]

Our Metal Electricity range is made from stainless steel plates, coated with an electrophoretic paint process and with a Buster + Punch logo printed in clear ink.

Style: 2G metal plate + infills.

For use with class 1 modules only / Must be earthed.

Recommended back box:

Standard flush mounted 2G back box. See dimensions of chosen module(s) for required back box depth.

[info. **FINISH & SKU NUMBERS.**]

[finish.]

[US.]

White	NPL-143064
Steel	NPL-07297
Brass	NPL-05294
Smoked Bronze	NPL-09296
Black	NPL-023063

[info. **CARE INSTRUCTIONS.**]

Wipe with damp cloth with no loose hairs, avoid using any chemicals. All finishes are prone to aging.

[info. **CERTIFICATION.**]

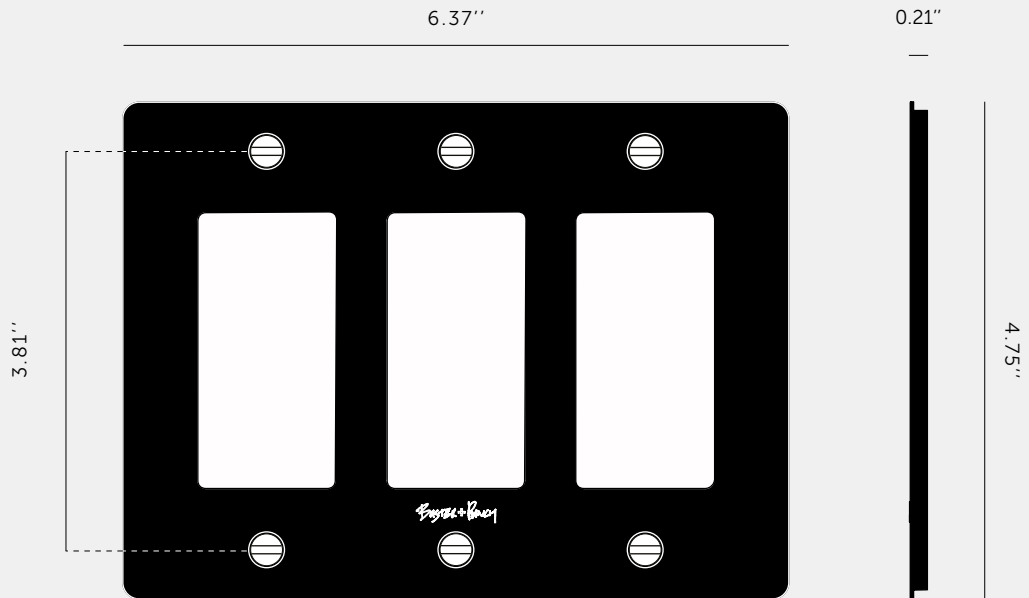
Plates: Underwriters Laboratories cULus listed for use throughout North America: E507052.

[please. **NOTE.**]

DISCLAIMER: Always consult a trade professional when installing this plate. Buster + Punch is not responsible for the usage or feasibility of installation requirements. This product is not suitable for damp or wet environments.

[type. **3G PLATE.**]

[info. **MEASUREMENTS.**]



[info. **SPECIFICATIONS.**]

Our Metal Electricity range is made from stainless steel plates, coated with an electrophoretic paint process and with a Buster + Punch logo printed in clear ink.

Style: 3G metal plate + infills.

For use with class 1 modules only / Must be earthed






Recommended back box:

Standard flush mounted 3G back box. See dimensions of chosen module(s) for required back box depth.

[info. **FINISH & SKU NUMBERS.**]

[finish.]

[US.]

 White	NPL-143067
 Steel	NPL-07302
 Brass	NPL-05299
 Smoked Bronze	NPL-09301
 Black	NPL-023066

[info. **CARE INSTRUCTIONS.**]

Wipe with damp cloth with no loose hairs, avoid using any chemicals. All finishes are prone to aging.

[info. **CERTIFICATION.**]

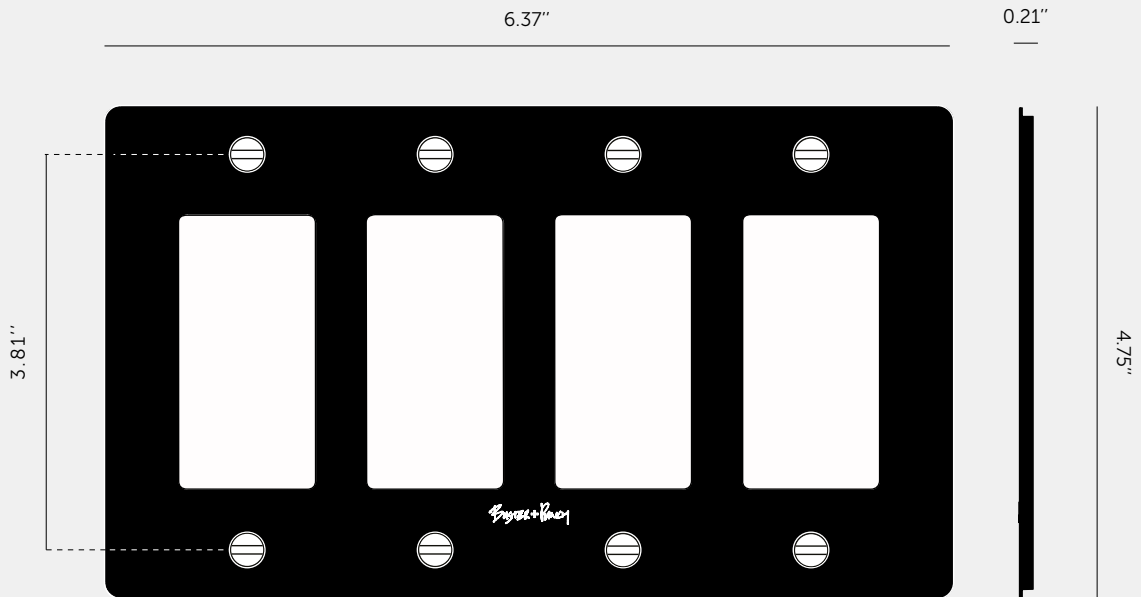
Plates: Underwriters Laboratories cULus listed for use throughout North America: E507052

[please. **NOTE.**]

DISCLAIMER: Always consult a trade professional when installing this plate. Buster + Punch is not responsible for the usage or feasibility of installation requirements. This product is not suitable for damp or wet environments.

[type. **4G PLATE.**]

[info. **MEASUREMENTS.**]



[info. **SPECIFICATIONS.**]

Our Metal Electricity range is made from stainless steel plates, coated with an electrophoretic paint process and with a Buster + Punch logo printed in clear ink.

Style: 4G metal plate + infills.

For use with class 1 modules only / Must be earthed.

Recommended back box:

Standard flush mounted 4G back box. See dimensions of chosen module(s) for required back box depth.

[info. **FINISH & SKU NUMBERS.**]

[finish.]

[US.]

White	NPL-143070
Steel	NPL-07307
Brass	NPL-05304
Smoked Bronze	NPL-09306
Black	NPL-023069

[info. **CARE INSTRUCTIONS.**]

Wipe with damp cloth with no loose hairs, avoid using any chemicals. All finishes are prone to aging.

[info. **CERTIFICATION.**]

Plates: Underwriters Laboratories cULus listed for use throughout North America: E507052.

[please. **NOTE.**]

DISCLAIMER: Always consult a trade professional when installing this plate. Buster + Punch is not responsible for the usage or feasibility of installation requirements. This product is not suitable for damp or wet environments.

FAQ SHEET

CATEGORY	QUESTION	ANSWER
GENERAL	Can I combine different modules on the same plate?	Yes, our plates are designed to accommodate a combination of modules, from 1G - 4G. Please refer to our website for purchasing options or contact one of our sales representatives for more information.
MODULES	What module inserts do you stock?	<p>We stock the following module inserts:</p> <ul style="list-style-type: none"> • US Duplex Outlet Module Module Code: Black NXM-02252 / White NXM-14253 • US Duplex Outlet Module + 2 USB Charger Module Code: Black NSC-02386 / White NSC-14387 • US Outlet Module 4 USB Charger Module Code: Black NSC-02388 / White NSC-14389 • US LED Dimmer Module Module Code: NDM-01385 • US Toggle Module Module Code: NTM-01384
MODULES	I want to use a module that isn't available on your website.	Our plates are designed to integrate flawlessly with our range of modules and accessories. For bespoke enquiries, please contact a member of our sales team directly.
INSTALL	I want to use a module that isn't available on your website.	Please reference the key dimensions of the module and mounting holes when checking compatibility. We always recommend flush mounted wall boxes, which are widely available from major retailers.
INSTALL	Will the plates work with my existing wall box?	We strongly recommend that our products are always installed by a qualified electrician. Always refer to the safety notices within the instruction manual before attempting any electrical installation.
GENERAL	Can I install my plate and modules myself ?	Yes, we stock a number of 'complete' products up to 2G, in solid finishes with matching details. Please refer to our website for purchasing options.