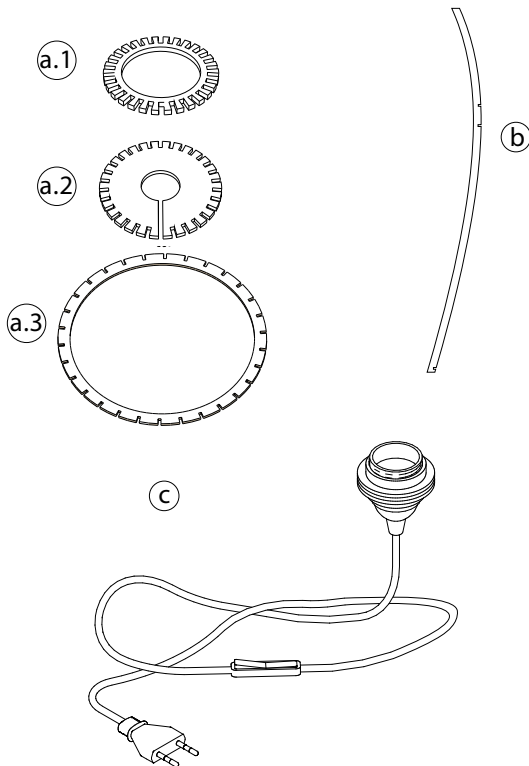


Components

- 1 X Gearwheel (a.1)
- 1 X Gearwheel (a.2)
- 1 X Gearwheel (a.3)
- 26 X Slats (b)
- 1 X Electrical assembly (c)
- 1 X LED bulb E26 Warm light recommended (up to 20W)



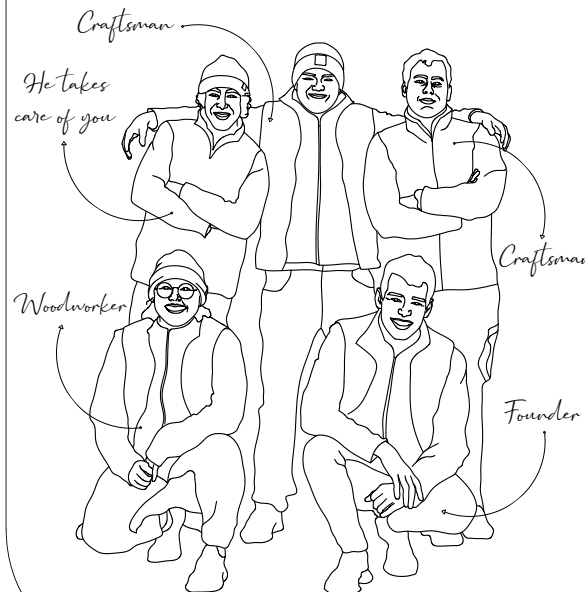
A big thank you !

We are happy to have you on board with Atelier Loupiote and thank you for helping to grow this project that means so much to us.

Something radiant awaits you!

Conceived in our minds and crafted by our hands, all our luminaires are brilliantly made in our workshop in Lyon to ensure **100% local production.**

And to stay tuned, you can follow us on Facebook and Instagram! (content in french only) Atelier-loupiote.fr

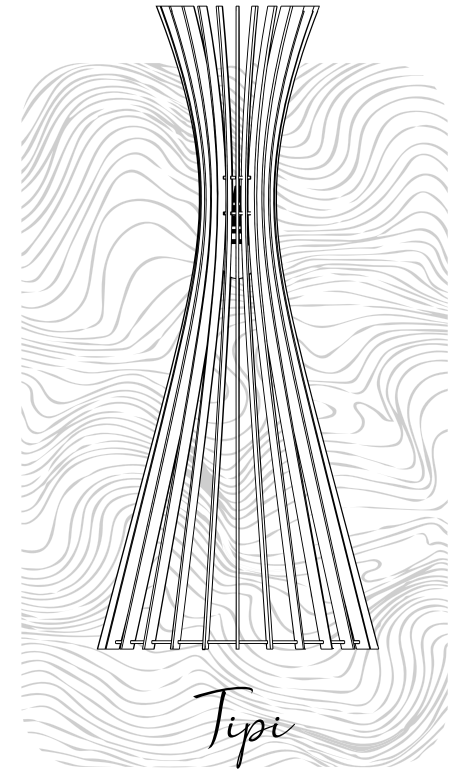


Our Loupiote team

ATELIER Loupiote

X

KIPLI



Our manual

CAUTION !

Please make sure to cut off the electricity and seek assistance from a professional for the connection. Only turn on the electrical equipment once the assembly is complete and the bulb is screwed in place.

PRELIMINARY INFORMATION :

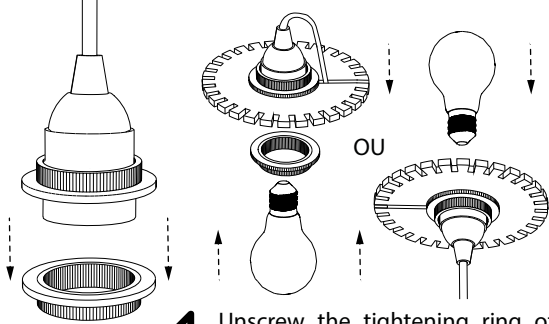
Some parts are fragile, handle them with care. We recommend setting up on a flat and stable surface to reduce the risk of breakage.

ARE YOU READY ?

Don't panic, we'll explain everything. Say goodbye to glue and tools; you only need your two hands for assembly. Pinky promise, it's a breeze. The parts are designed to fit together effortlessly. Just go with the flow!

NEED HELP ?

If you encounter any issues and require technical support, please contact our workshop directly via email at the following address: hello@atelier-loupiote.fr. We'll be happy to assist you.

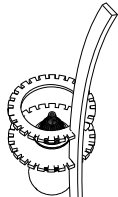


- 1 Unscrew the tightening ring of the socket. Insert the socket into the gearwheel (a.2) and secure it by screwing the ring back in place. Plug a LED bulb E26 into the socket.

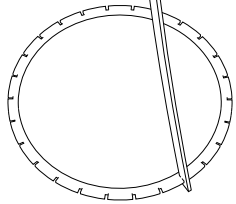
Insert the gearwheel (a.2) into the middle notch of a slat (b), with the LED bulb facing down.

2

The middle notch

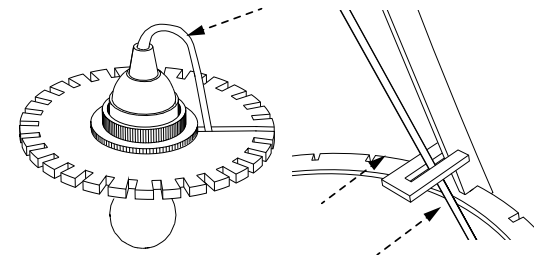
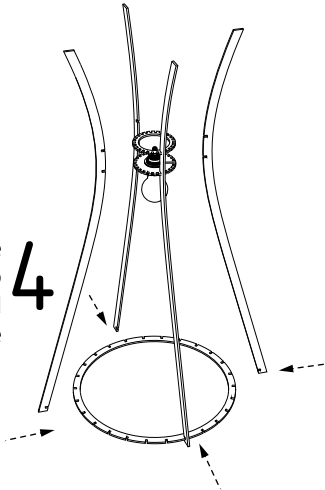


- 3 Insert the gearwheel (a.1) into the top notch, then the large gearwheel (a.3) into the remaining notch at the bottom end of the slat (b).



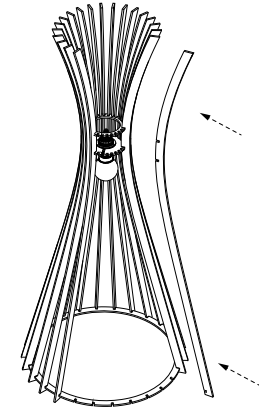
Insert a slat (b) on the three opposite sides in order to stabilize the model and facilitate the remainder of the assembly.

4



Thread the cable through the slot in the gearwheel (a.1), and run it along a slat (b) to the base of the model. Secure the cable using the provided U-shaped fasteners.

5



- 6 Insert the remaining slats (b) to complete the assembly. You can now plug the power cable for the lamp to light up.

And you're done !

