

PD321712-RT

Pendant

TECHNICAL SUPPORT

1.855.855.8926

technicalsupport@aloralighting.com

⚠ WARNINGS AND CAUTIONS

- Make sure **POWER** is **COMPLETELY OFF** at the fuse box
- Have your fixture installed by a qualified licensed electrician
- Prepare everything in a clear area
- Wear gloves at all times during this installation
- Read instructions carefully before you start assembly
- Keep this installation sheet for future reference

Please Note:

- This Alora LED fixture comes with pre-wired LED module(s)
- Unless instructed, Do Not touch any part of the LED module(s) as any unnecessary contact with the module could cause permanent damage
- For dimming, an ELV (Electronic Low Voltage), TRIAC or 0-10V type of dimmer is required
- 120-277V input

NOTICE

• The important safeguards and instructions outlined in this sheet cannot cover all possible conditions and situations that may occur. It must be understood that caution and certain care factors must be followed. These instructions are provided for your safety and we highly recommend that a licensed, trained electrician install this unit.

ASSEMBLY INSTRUCTIONS

Step 1

Remove fixture from its original package.

Step 2

Remote driver (4a) must be installed and voltage wires brought to the mounting location prior to fixture installation. Make proper electrical connections (black to hot "L", white to neutral "N", green to "GND", Dim + to purple, Dim- to gray) with wire nuts provided in hardware package. Secure driver lid (4d) to driver box (4b) with screws (4c).

Recommended Max Voltage Wire Length
12 AWG= 80ft
14 AWG= 50ft
18 AWG= 30ft

Step 3

Connect LED+/LED- wire from remote driver (4a) to approximate location. Make proper LED+/LED- wire connection with wire nuts provided. Make sure safety cable is properly installed (1d).

Step 4

Attach powered backplate (9a) to electrical junction box (1a) using screws provided in hardware package. **For Horizontal Orientation Option:** Secure non-powered backplate (5b) to mounting surface by compressing butterfly clips (5a) through 3/8" holes in ceiling and then use screws (5c) to fasten (See Illustration 1 for optional mounting option).

Step 5

Attach decorative cover (6a) to backplate (9a/5b), followed by pivot (6b) and secure with decorative ring (6c) by threading clockwise. Align hole in pivot (6b) and fixture end (7a) and secure with screw (6d). Repeat step for both ends.

Step 6 (For Vertical Orientation Option)

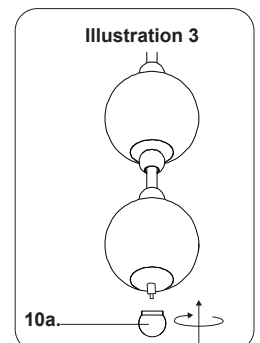
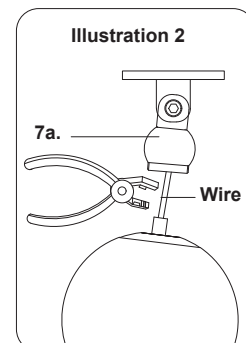
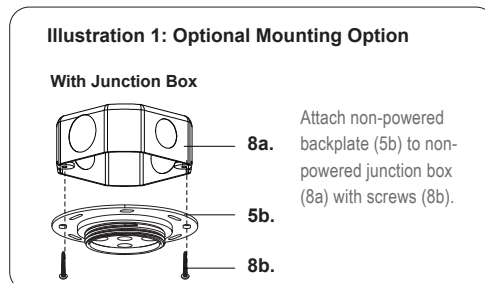
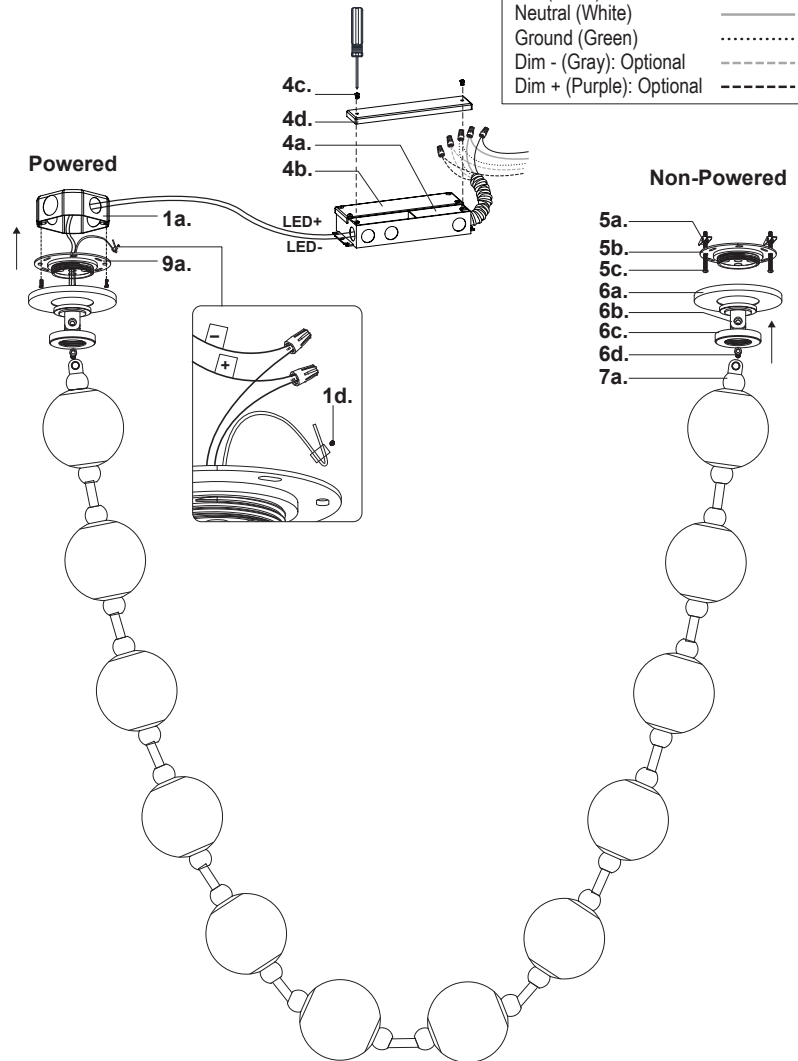
Remove fixture end (7a) and cut excess wire (See Illustration 2). Secure bead end (10a) to fixture by threading clockwise (See Illustration 3)

Step 7

Remove protective paper.

You are now ready to enjoy your fixture.

Wires	
Hot (Black)	—————
Neutral (White)	—————
Ground (Green)
Dim - (Gray): Optional	- - - - -
Dim + (Purple): Optional	- - - - -



alora

P: 1.855.855.8926

CANADA: 19054 28th Avenue Surrey - BC V3Z 6M3

USA: 3035 E. Lone Mountain Rd - Las Vegas, NV, 89081

www.aloralighting.com

20230619