

4" Low Voltage

Remodel Non-IC Housing

Model & Product

HR-8401E 4in Electronic
Low Voltage Remodel Non-
IC Housing

Example: **HR-8401E**

DESCRIPTION

Engineered for high-performance in a compact fixture, 4" Low Voltage Recessed Downlights are styled with form and function. Available with a variety of decorative adjustable and wet location trim options are available.

FEATURES

- Integral electronic transformer
- J-Box and transformer accessible through ceiling
- Advanced auto-reset, soft start and short circuit protection features
- Supplied thermal protector protects against over-lamping
- Suitable for 2" x 6" joist installations, for use in shallow applications
- Transformer included
- 5 year warranty

SPECIFICATIONS

Construction:	20 gauge galvanized steel
Power:	50W
Input:	120 VAC, 50/60Hz
Dimming:	ELV: 100-10%
Light Source:	Halogen
Mounting:	Two heavy gauge inner retention clips push out onto ceiling or other mounting surface to firmly hold housing in place
Cut Out:	4 9/16"
Ceiling Thickness:	3/4"
Operating Temp:	-4°F to 104°F (-20°C to 40°C)
Standards:	UL, cUL, Damp Location Listed, Non IC

Fixture Type: _____

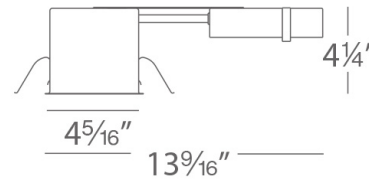
Catalog Number: _____

Project: _____

Location: _____



LINE DRAWING:



4" Low Voltage

Adjustable Step Baffle Trim

Model & Light Source	Lumens	Finish
HR-8411 Halogen MR16 HR-8411 LED LED MR16		WT/WT White/White

Example: **HR-8411-WT/WT**

DESCRIPTION

Engineered for high-performance in a compact fixture, 4" Low Voltage Recessed Downlights are styled with form and function. Available for Non-IC installations, a variety of decorative adjustable and Wet Location trim options are available.

FEATURES

- Accommodates most LED MR16 or Halogen MR16 lamps
- Center lamp holder allows lamp to be tilted up to 35° from vertical
- The supplied clear glass lens can be replaced with one lens accessory
- Steel spring clips secure trim to housing
- 5 year warranty

SPECIFICATIONS

Construction:	20 gauge steel
Input:	12 VAC
Light Source:	LED MR16, Halogen MR16
Finish:	Electrostatically Powder Coated: White/White
Standards:	UL, cUL, Damp Location Listed

Fixture Type: _____

Catalog Number: _____

Project: _____

Location: _____

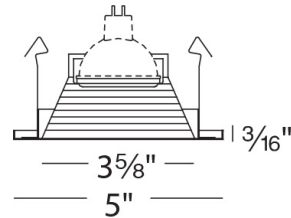


FINISHES:



White/White
e

LINE DRAWING:



4" Low Voltage

Die-Cast Adjustable Step Baffle Trim

Model & Light Source	Lumens	Finish
HR-D411 Halogen MR16 HR-D411LED LED MR16		WT/WT White/White

Example: **HR-D411-WT/WT**

DESCRIPTION

Engineered for high-performance in a compact fixture, 4" Low Voltage Recessed Downlights are styled with form and function. Available for Non-IC installations, a variety of decorative adjustable and Wet Location trim options are available.

FEATURES

- Accommodates most LED MR16 or Halogen MR16 lamps
- Center lamp holder allows lamp to be tilted up to 35° from vertical
- The supplied clear glass lens can be replaced with one lens accessory
- Steel spring clips secure trim to housing
- 5 year warranty

SPECIFICATIONS

Construction:	Die-cast aluminum
Input:	12 VAC
Light Source:	LED MR16, Halogen MR16
Finish:	Electrostatically Powder Coated: White/White
Standards:	UL, cUL, Damp Location Listed

Fixture Type: _____

Catalog Number: _____

Project: _____

Location: _____

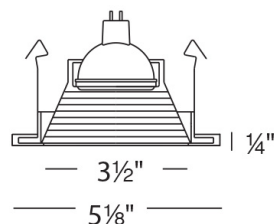


FINISHES:



White/White
e

LINE DRAWING:



4" Low Voltage

Die-Cast Adjustable Specular Square Trim

Model & Light Source	Lumens	Finish
HR-D412-S Halogen MR16 HR-D412LED-S LED MR16		SC/BN Specular Clear/Brushed Nickel SC/WT Specular Clear/White

Example: **HR-D412-S-SC/BN**

DESCRIPTION

Engineered for high-performance in a compact fixture, 4" Low Voltage Recessed Downlights are styled with form and function. Available for Non-IC installations, a variety of decorative adjustable and Wet Location trim options are available.

FEATURES

- Accommodates most LED MR16 or Halogen MR16 lamps
- Center lamp holder allows lamp to be tilted up to 35° from vertical
- The supplied clear glass lens can be replaced with one lens accessory
- Steel spring clips secure trim to housing
- 5 year warranty

SPECIFICATIONS

Construction:	Die-cast aluminum
Input:	12 VAC
Light Source:	Halogen MR16, LED MR16
Finish:	Electrostatically Powder Coated:Specular Clear/White, Electrostatically Powder Coated::Specular Clear/Brushed Nickel
Standards:	UL, cUL, Damp Location Listed

Fixture Type: _____

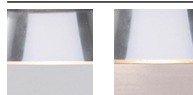
Catalog Number: _____

Project: _____

Location: _____



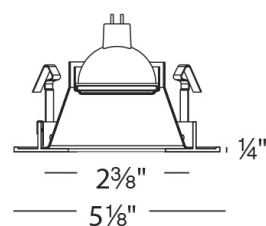
FINISHES:



Specular
Clear/White

Specular Cl
ear/Brushe
d Nickel

LINE DRAWING:



4" Low Voltage

Die-Cast Adjustable Specular Round Trim

Model & Light Source	Lumens	Finish
HR-D412 Halogen MR16 HR-D412LED LED MR16		SC/BN Specular Clear/Brushed Nickel SC/WT Specular Clear/White

Example: **HR-D412-SC/BN**

DESCRIPTION

Engineered for high-performance in a compact fixture, 4" Low Voltage Recessed Downlights are styled with form and function. Available for Non-IC installations, a variety of decorative adjustable and Wet Location trim options are available.

FEATURES

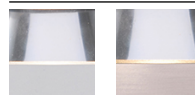
- Accommodates most LED MR16 or Halogen MR16 lamps
- Center lamp holder allows lamp to be tilted up to 35° from vertical
- The supplied clear glass lens can be replaced with one lens accessory
- Steel spring clips secure trim to housing
- 5 year warranty

SPECIFICATIONS

Construction:	Die-cast aluminum
Input:	12 VAC
Light Source:	Halogen MR16, LED MR16
Finish:	Electrostatically Powder Coated:Specular Clear/White, Electrostatically Powder Coated::Specular Clear/Brushed Nickel
Standards:	UL, cUL, Damp Location Listed



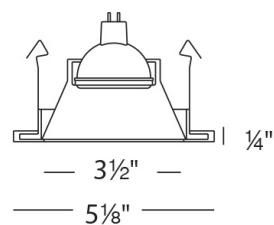
FINISHES:



Specular
Clear/White

Specular Cl
ear/Brushe
d Nickel

LINE DRAWING:



Fixture Type: _____

Catalog Number: _____

Project: _____

Location: _____

4" Low Voltage

Die-Cast Adjustable Slotted Trim

Model & Light Source	Lumens	Finish
HR-D413 Halogen MR16 HR-D413LED LED MR16		WT White

Example: **HR-D413-WT**

DESCRIPTION

Engineered for high-performance in a compact fixture, 4" Low Voltage Recessed Downlights are styled with form and function. Available for Non-IC installations, a variety of decorative adjustable and Wet Location trim options are available.

FEATURES

- Accommodates most LED MR16 or Halogen MR16 lamps
- Center lamp holder allows lamp to be tilted up to 35° from vertical
- The supplied clear glass lens can be replaced with one lens accessory
- Steel spring clips secure trim to housing
- 5 year warranty

SPECIFICATIONS

Construction:	Die-cast aluminum
Input:	12 VAC
Light Source:	LED MR16, Halogen MR16
Finish:	Electrostatically Powder Coated: White
Standards:	UL, cUL, Damp Location Listed

Fixture Type: _____

Catalog Number: _____

Project: _____

Location: _____

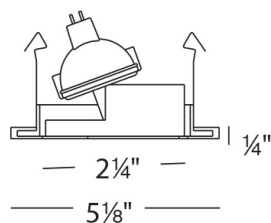


FINISHES:



White

LINE DRAWING:



4" Low Voltage

Die-Cast Adjustable Square Trim

Model & Light Source	Lumens	Finish
HR-D416 Halogen MR16 HR-D416LED LED MR16		BN Brushed Nickel WT White

Example: **HR-D416-BN**

DESCRIPTION

Engineered for high-performance in a compact fixture, 4" Low Voltage Recessed Downlights are styled with form and function. Available for Non-IC installations, a variety of decorative adjustable and Wet Location trim options are available.

FEATURES

- Accommodates most LED MR16 or Halogen MR16 lamps
- Center lamp holder allows lamp to be tilted up to 30° from vertical
- The supplied clear glass lens can be replaced with one lens accessory
- Steel spring clips secure trim to housing
- 5 year warranty

SPECIFICATIONS

Construction:	Die-cast aluminum
Input:	12 VAC
Light Source:	LED MR16, Halogen MR16
Finish:	Electrostatically Powder Coated:White, Electrostatically Powder Coated::Brushed Nickel
Standards:	UL, cUL, Damp Location Listed

Fixture Type: _____

Catalog Number: _____

Project: _____

Location: _____



FINISHES:

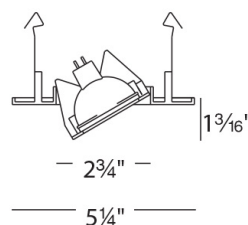


White



Brushed Nickel

LINE DRAWING:



WAC LIGHTING

4" Low Voltage

Die-Cast Gimbal Ring Trim

Model & Light Source	Lumens	Finish
HR-D417 Halogen MR16 HR-D417LED LED MR16		BN Brushed Nickel WT White

Example: **HR-D417-BN**

DESCRIPTION

Engineered for high-performance in a compact fixture, 4" Low Voltage Recessed Downlights are styled with form and function. Available for Non-IC installations, a variety of decorative adjustable and Wet Location trim options are available.

FEATURES

- Accommodates most LED MR16 or Halogen MR16 lamps
- Center lamp holder allows lamp to be tilted up to 25° from vertical
- The supplied clear glass lens can be replaced with one lens accessory
- Steel spring clips secure trim to housing
- 5 year warranty

SPECIFICATIONS

Construction:	Die-cast aluminum
Input:	12 VAC
Light Source:	LED MR16, Halogen MR16
Finish:	Electrostatically Powder Coated:White, Electrostatically Powder Coated::Brushed Nickel
Standards:	UL, cUL, Damp Location Listed

Fixture Type: _____

Catalog Number: _____

Project: _____

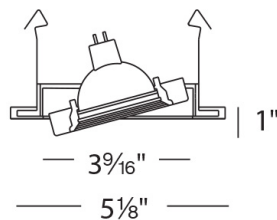
Location: _____



FINISHES:



LINE DRAWING:



WAC LIGHTING

4" Low Voltage

Die Cast Shower Trim Clear Flat Glass

Model & Light Source	Lumens	Finish
HR-D418-S Halogen MR16 HR-D418LED-S LED MR16		WT White

Example: **HR-D418-S-WT**

DESCRIPTION

Engineered for high-performance in a compact fixture, 4" Low Voltage Recessed Downlights are styled with form and function. Available for Non-IC installations, a variety of decorative adjustable and Wet Location trim options are available.

FEATURES

- Accommodates most LED MR16 or Halogen MR16 lamps
- Center lamp holder allows lamp to be tilted up to 35° from vertical
- The supplied clear glass lens can be replaced with one lens accessory
- Steel spring clips secure trim to housing
- 5 year warranty

SPECIFICATIONS

Construction:	Die-cast aluminum
Input:	12 VAC
Light Source:	LED MR16, Halogen MR16
Finish:	Electrostatically Powder Coated: White
Standards:	UL, cUL, Wet Location Listed

Fixture Type: _____

Catalog Number: _____

Project: _____

Location: _____

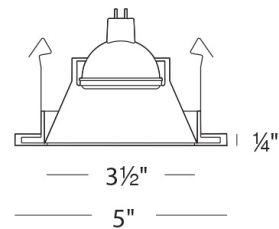


FINISHES:



White

LINE DRAWING:



4" Low Voltage

Die-Cast Adjustable Round Trim

Model & Light Source	Lumens	Finish
HR-D425 Halogen MR16 HR-D425LED LED MR16		WT White

Example: **HR-D425-WT**

DESCRIPTION

Engineered for high-performance in a compact fixture, 4" Low Voltage Recessed Downlights are styled with form and function. Available for Non-IC installations, a variety of decorative adjustable and Wet Location trim options are available.

FEATURES

- Accommodates most LED MR16 or Halogen MR16 lamps
- Center lamp holder allows lamp to be tilted up to 80° from vertical
- The supplied clear glass lens can be replaced with one lens accessory
- Steel spring clips secure trim to housing
- 5 year warranty

SPECIFICATIONS

Construction:	Die-cast aluminum
Input:	12 VAC
Light Source:	Halogen MR16, LED MR16
Finish:	Electrostatically Powder Coated: White
Standards:	UL, cUL, Damp Location Listed

Fixture Type: _____

Catalog Number: _____

Project: _____

Location: _____



FINISHES:



White

LINE DRAWING:

