

# WAC LIGHTING

## 2.5" Low Voltage

### Step Baffle Trim

Model & Light Source	Lumens	Finish
HR-834 Halogen MR16 HR-834LED LED MR16		WT/WT White/White

Example: **HR-834-WT/WT**

#### DESCRIPTION

Superb performance delivered in a small package. The 2.5" Low Voltage Recessed Downlight series offers smooth and crisp light for under cabinet and tight recessed spaces where miniature apertures are desired. For use with HR-800 series low voltage housings. Accepts MR16 LED or incandescent lamp 50W max, housing and lamp are sold separately.

#### FEATURES

- Accommodates most LED MR16 or Halogen MR16 lamps
- Retention clips secure lens firmly to lamp
- Clear lens included, replaceable lens options available
- 5 year warranty

#### SPECIFICATIONS

Construction:	20 gauge steel
Light Source:	Halogen MR16, LED MR16
Finish:	Electrostatically Powder Coated: White/White
Operating Temp:	-4°F to 104°F (-20°C to 40°C)
Standards:	UL, cUL, Damp Location Listed

Fixture Type: \_\_\_\_\_

Catalog Number: \_\_\_\_\_

Project: \_\_\_\_\_

Location: \_\_\_\_\_

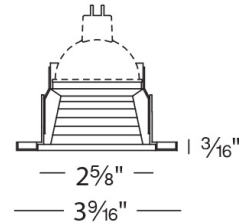


#### FINISHES:



White/White  
e

#### LINE DRAWING:



# WAC LIGHTING

## 2.5" Low Voltage

### Non-IC Housing for Cabinet Use

Model

HR-800 2.5in Under  
Cabinet Remodel Housing

Example: **HR-800**

#### DESCRIPTION

Superb performance delivered in a small package. The 2.5" Low Voltage Recessed Downlight series offers smooth and crisp light for under cabinet and tight recessed spaces where miniature apertures are desired. May be used with any WAC compatible 2.5" HR-837, HR-834, or HR-836 trims.

#### FEATURES

- For cabinet use only
- Total depth of 4", one of the lowest profile recessed units available
- Low profile housing
- Transformer required
- 5 year warranty

#### SPECIFICATIONS

Construction:	20 gauge steel
Input:	12 VAC, 50/60Hz
Dimming:	ELV: %
Light Source:	Halogen MR16 ( Sold Separately )
Mounting:	No screws, nails or hardware required. Flat "wing" springs expand against the cut out hole to hold fixture against the surface
Cut Out:	3"
Ceiling Thickness:	3/4"
Operating Temp:	-4°F to 104°F (-20°C to 40°C)
Standards:	UL, cUL, Damp Location Listed, Non IC

Fixture Type: \_\_\_\_\_

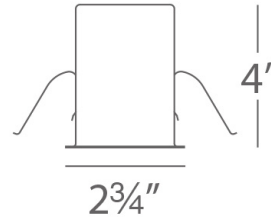
Catalog Number: \_\_\_\_\_

Project: \_\_\_\_\_

Location: \_\_\_\_\_



#### LINE DRAWING:



# WAC LIGHTING

## 2.5" Low Voltage

### Remodel Non-IC Housing Non-IC

#### Model & Product

HR-801 2.5in Low  
Voltage Remodel Non-IC  
Housing

Example: **HR-801**

#### DESCRIPTION

Superb performance delivered in a small package. The 2.5" Low Voltage Recessed Downlight series offers smooth and crisp light for under cabinet and tight recessed spaces where miniature apertures are desired. May be used with any WAC compatible 2.5" HR-837, HR-834, or HR-836 trims.

#### FEATURES

- Integral Electronic Transformer
- Advanced auto-reset, soft start and short circuit protection
- 3" clearance on all sides when insulation is present
- Suitable for chain wiring
- J-box and transformer accessible through ceiling opening
- Transformer included
- 5 year warranty

#### SPECIFICATIONS

Construction:	20 gauge steel
Power:	50W
Input:	120 VAC, 50/60Hz
Dimming:	ELV: 100-10%
Light Source:	Halogen MR16 ( Sold Separately )
Mounting:	No screws, nails or hardware required. Flat "wing" springs expand against the cut out hole to hold fixture against the surface
Cut Out:	3"
Ceiling Thickness:	3/4"
Operating Temp:	-4°F to 104°F (-20°C to 40°C)
Standards:	UL, cUL, Damp Location Listed, Non IC

Fixture Type: \_\_\_\_\_

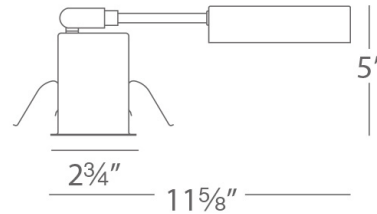
Catalog Number: \_\_\_\_\_

Project: \_\_\_\_\_

Location: \_\_\_\_\_



#### LINE DRAWING:



# WAC LIGHTING

## 2.5" Low Voltage

### New Construction Non-IC Housing

#### Model & Product

HR-802 2.5in Low  
Voltage New Construction  
Non-IC Housing

Example: **HR-802**

#### DESCRIPTION

Superb performance delivered in a small package. The 2.5" Low Voltage Recessed Downlight series offers smooth and crisp light for under cabinet and tight recessed spaces where miniature apertures are desired. May be used with any WAC compatible 2.5" HR-837, HR-834, or HR-836 trims.

#### FEATURES

- 3" clearance on all sides when insulation is present
- Total depth of 4", one of the lowest profile recessed units available
- Low profile housing
- Transformer included
- 5 year warranty

#### SPECIFICATIONS

Construction:	20 gauge steel
Power:	50W
Input:	120 VAC, 50/60Hz
Dimming:	ELV: 100-10%
Light Source:	Halogen MR16
Mounting:	Supplied with hanger bars, adjustable from 15"-242" to accommodate various joist construction and grid sizes.
Cut Out:	3"
Ceiling Thickness:	3/4"
Operating Temp:	-4°F to 104°F (-20°C to 40°C)
Standards:	UL, cUL, Damp Location Listed, Non IC

Fixture Type: \_\_\_\_\_

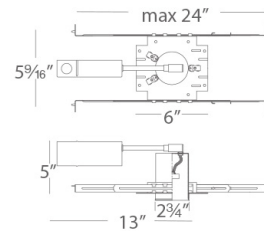
Catalog Number: \_\_\_\_\_

Project: \_\_\_\_\_

Location: \_\_\_\_\_



#### LINE DRAWING:



Fixture Type: \_\_\_\_\_







Catalog Number: \_\_\_\_\_

Project: \_\_\_\_\_

Location: \_\_\_\_\_

## 2.5" Low Voltage Step Baffle Trim

### ACCESSORIES

	<i>Model</i>	<i>Description</i>	<i>Finish</i>
	<b>LENS-16-RED</b> <b>LENS-16-GRN</b> <b>LENS-16-BLU</b> <b>LENS-16-AMB</b>	Colored Lens Colored Lens Colored Lens Colored Lens	Red Green Blue Amber
	<b>LENS-16-FR</b>	Clear/Frosted Lens	Frosted
	<b>LENS-16-SPR</b>	Spread Lens	Spread Lens
	<b>LENS-16-UVF</b>	UV Filter lens	Clear
	<b>LENS-16-BEL</b>	Beam Elongating Lens	Beam Elongating
	<b>LENS-16-HCL</b>	Honeycomb Louver	Black