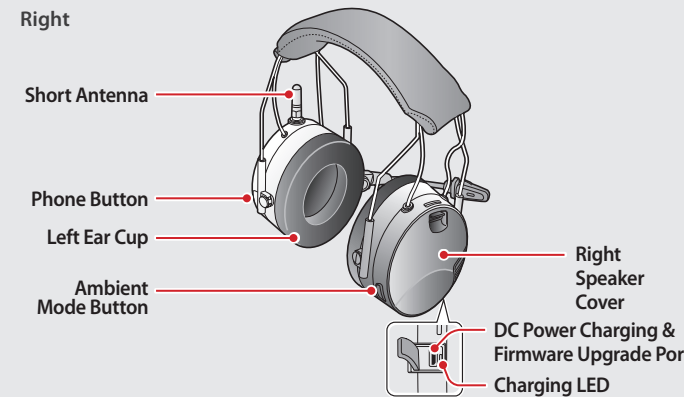
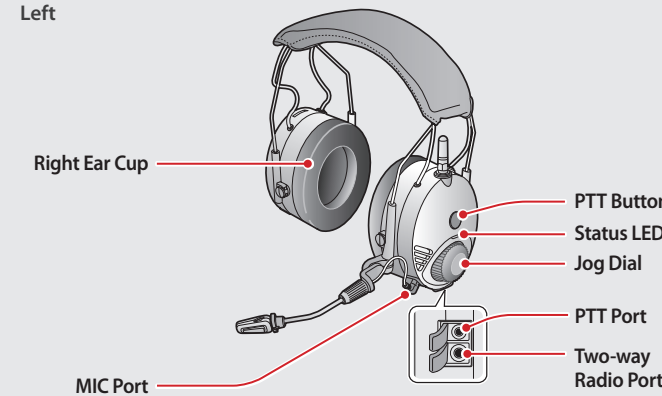
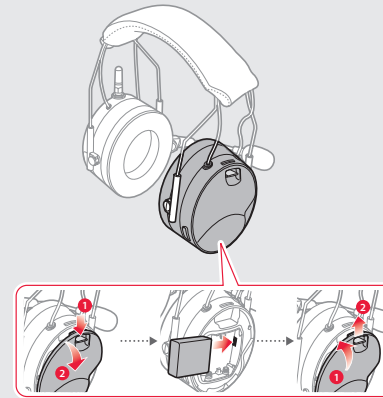


PREPARATION

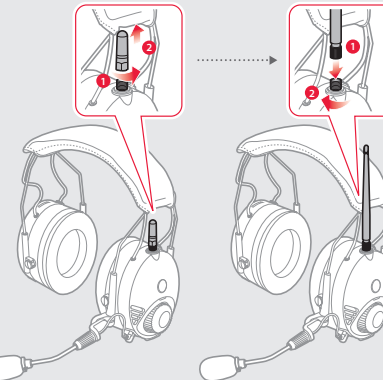
Knowing the Headset Layout



Installing the Battery

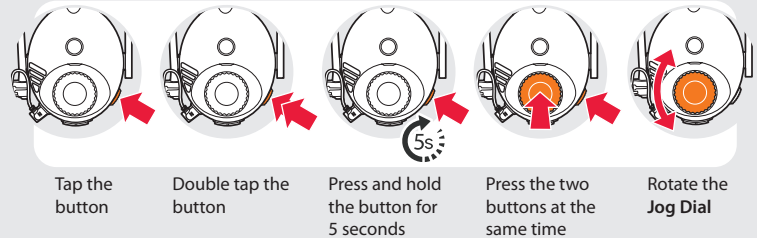


Replacing the Antenna

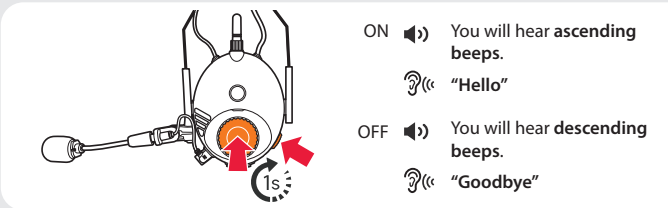


BASIC OPERATION

Operating the Buttons

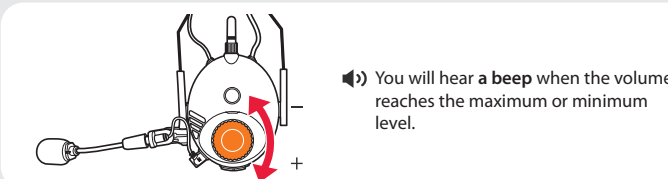


Turning On/Off the Headset

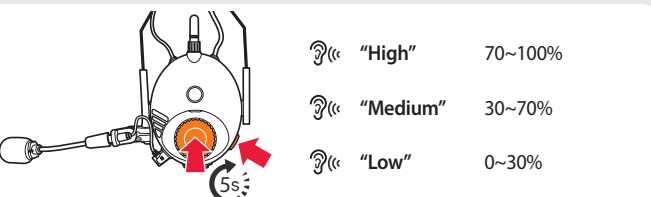
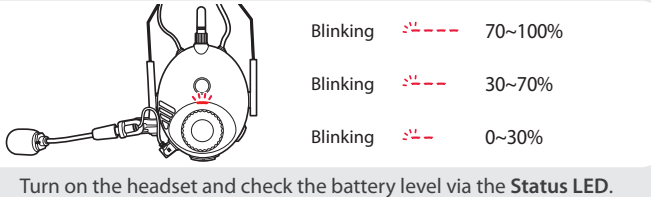


Simultaneously press and hold the **Jog Dial** and the **Phone Button** for 1 second to turn on or off the headset.

Adjusting the Volume

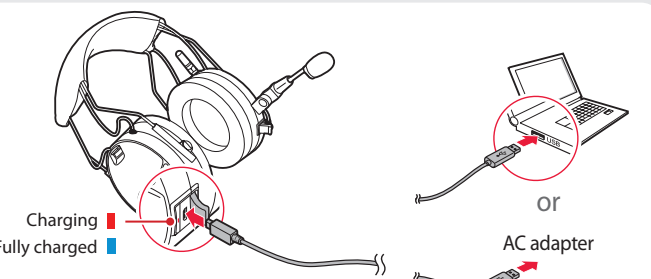


Checking the Battery Level



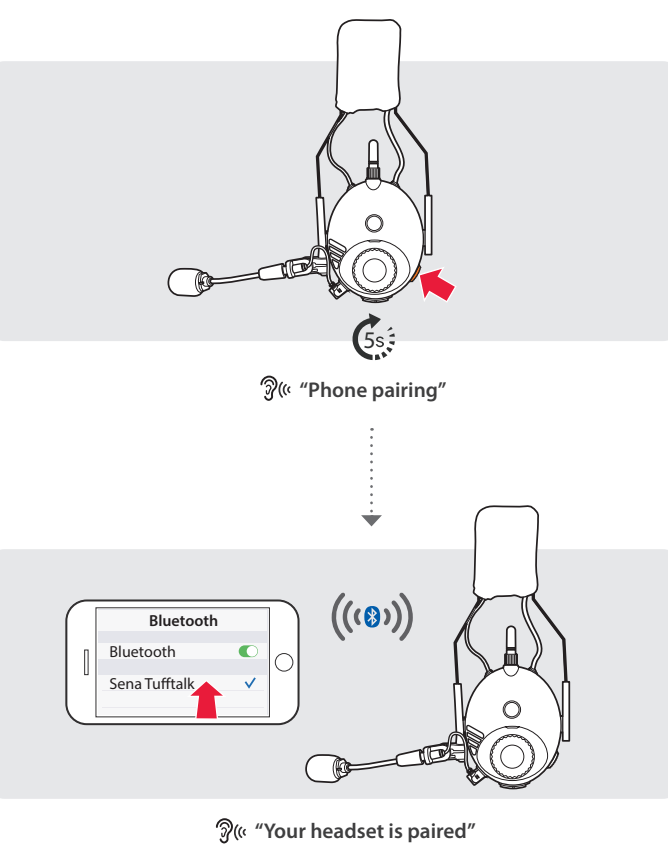
Or, press and hold the **Jog Dial** and the **Phone Button** for 5 more seconds when the headset turns on. You will hear a **triple beep** and a **voice prompt**.

Charging the Battery

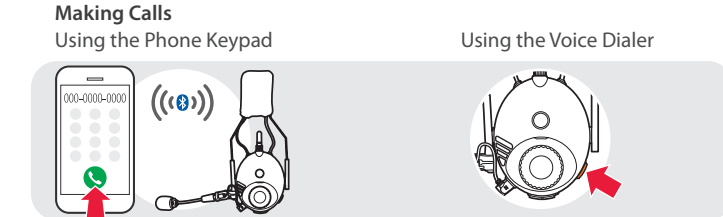
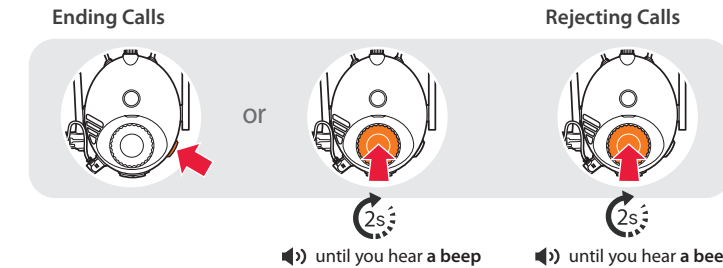


PAIRING

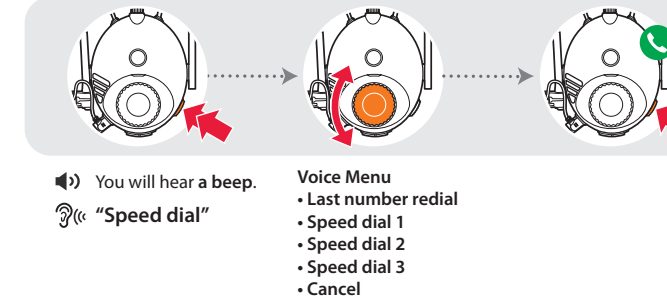
Pairing with Mobile Devices - Phone, Music



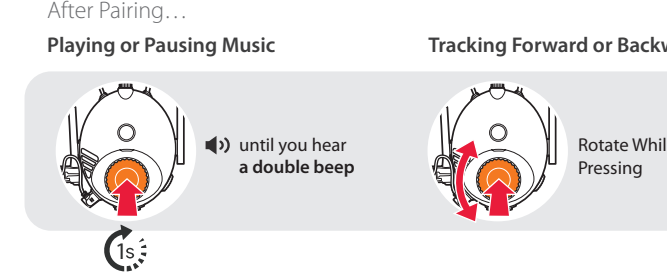
Using Phone Features



Using the Speed Dial



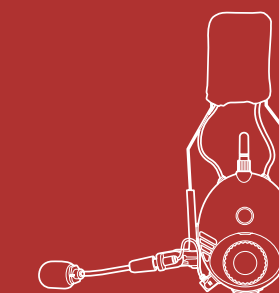
Listening to Music



TUFFTALK

Quick Start Guide

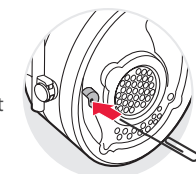
Industrial Bluetooth®
Communication System



You can download the full version of the manual and view other Sena products at the Sena website: senaindustrial.com.

TRUBLESHOOTING

- Factory Reset**
If you want to restore the Tufftalk to factory default settings, press and hold the **Phone Button** for 10 seconds. Tap the **Jog Dial**. The headset automatically restores the default settings and turns off.
- Fault Reset**
If the Tufftalk is not working properly for any reason, push the pin-hole reset button located below the left ear cup.



OPTIONAL CABLE ACCESSORIES

TUFFTALK-A0110 2-way Radio Cable for Kenwood Twin-pin Connector	TUFFTALK-A0114 2-way Radio Cable for Yaesu Single-pin Connector
TUFFTALK-A0111 2-way Radio Cable for Motorola Twin-pin Connector	TUFFTALK-A0115 2-way Radio Cable for Midland Twin-pin Connector
TUFFTALK-A0112 2-way Radio Cable for Motorola Single-pin Connector	TUFFTALK-A0116 2-way Radio Cable with an Open End
TUFFTALK-A0113 2-way Radio Cable for Icom Twin-pin Connector	TUFFTALK-A0117 2-way Radio Cable with Straight Type for Midland or Icom Twin-pin Connector

SENA INDUSTRIAL Sena Technologies, Inc.
Customer Support: senaindustrial.com

SETTING

Method1) Using the headset

You will hear a double beep sound.
ⓘ "Configuration menu"

Method2) Using the Sena Device Manager

Connect the headset to your computer via a USB cable. Launch the Sena Device Manager and click **DEVICE SETTING** to configure the headset settings.

For details about downloading the Sena Device Manager, refer to the leaflet included in the package.

- Method3) Using the Sena Industrial App**
- On your smartphone, download the Sena Industrial App for Android or iPhone from Google Play or App Store. Refer to senaindustrial.com for more details.
 - Pair your smartphone with the headset.
 - Run the Sena Industrial App. Swipe the screen to the right and tap **Settings** to configure the headset settings.

RADIO

Turning On/Off the FM Radio

You will hear a double beep sound.
ⓘ "FM on" or "FM off"

Seeking Stations

Rotate While Pressing

Listening to Preset Stations

Saving or Deleting Stations

To Save: ⓘ "Preset (#)" ⓘ "(#)" ⓘ "Save preset (#)"

To Delete: ⓘ "Delete preset (#)"

USEFUL FUNCTIONS

Turning On/Off the Ambient Mode

Using the Built-in Two-way Radio

First, connect the two-way radio cable with the headset.

Using the Intercom

After Pairing...

You can start or end a two-way intercom conversation with each headset.

INTERCOM

Pairing with Other Headsets

ⓘ "Intercom pairing"

Follow the steps above to pair with two or more headsets.