



INTENSIFYING COLOUR BOMB

DEEPLY NOURISHING COLOUR
REFRESHING TREATMENT

id HAIR









INTENSIFYING
COLOUR
BOMB

COLOUR BOMB IS A DIRECT COLOUR
WITH A TREATMENT EFFECT

Work creatively in your salon with Colour Bomb when using it for creating effects or when making a pre pigmentation. Colour Bomb is also ideal for your customers to buy and use at home to maintain their beautiful hair colour in between salon treatments.



id HAIR

COLOUR BOMB
KEY INGREDIENTS

ALOE VERA

Aloe Vera contains an enzyme that helps prevent scalp irritation. In addition, you find more than 20 moisturising minerals and vitamins in this efficient plant which add lots of shine to the hair.

PANTHENOL

Panthenol, also known as the previtamin B5, has nourishing and moisturising benefits for the hair. It also protects the hair against humidity.

RICE PROTEIN

Rice Protein penetrates the hair strand and provides moisture and strength to damaged hair. This makes combing of the hair easier.

• NO PPD

• NO RESORCINOL

• NO MEA

PRO TIPS BEFORE STARTING:



1 BE CAREFUL EMULSIFYING COLOUR BOMB FOR TOO LONG AS IT MAY DAMAGE THE COLOUR PIGMENTS AND LOSE THE COLOUR INTENSITY.



2 ALWAYS USE GLOVES AS THE COLOUR PIGMENTS ARE VERY EFFICIENT.



3 FOR AN INTENSE COLOUR RESULT, ADD COLOUR BOMB IN DRY HAIR.



4 THE STRAND TESTS SHOW THE RESULTS ON A FULLY BLEACH HAIR .

DIRECT COLOUR

The colours may be used as a colour refresh or as a semi colour.
This allows you to be creative and give your clients a long lasting colour result.

INTENSIFYING
COLOUR
BOMB

COLOUR CHART: • 1 – ASH • 3 – GOLDEN • 4 – COPPER • 6 – RED • 7 – BROWN • 8 – VIOLET • 9 – PEARL



DARK
BROWN
471



HOT
CHOCOLATE
673



CRAZY
VIOLET
681



SPICY
CURRY
744



SHINY
COPPER
747



FIRE
RED
766



CAFFÈ
LATTE
807



SWEET
TOFFEE
834



POWER
PINK
906



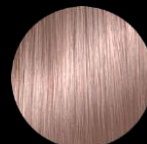
SMOKED
LAVENDER
908



SILVER
GREY
911



SOFT
VANILLA
913



LIGHT
HONEY
933



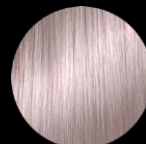
ROSE
CORAL
934



ROSE
GOLD
963



COLD
SILVER
1001



PEARL
BLONDE
1081

INTENSIFYING
COLOUR
BOMB

PRE-PIGMENTATION

Why pre-pigmentation?

Pre-pigmentation is used when you want to go very dark on light or bleached hair.

Without a pre-pigmentation, the hair may lose colour fast, seem darker or may turn green or grey-ish.

LOW – MEDIUM POROSITY

NEUTRAL TO COLD RESULT

LEVEL 9 - 10
LEVEL 7 - 8
LEVEL 6 - 7
LEVEL 4 - 6
LEVEL 1 - 4

SOFT VANILLA **913**
CAFFÈ LATTE **807**
SWEET TOFFEE **834**
HOT CHOCOLATE **673**
DARK BROWN **471**



HIGH POROSITY

MORE THAN 3 LEVELS DOWN // WARM RESULT

LEVEL 8 - 10
LEVEL 5 - 7
LEVEL 1 - 4

LIGHT HONEY **933**
SPICY CURRY **744**
FIRE RED **766**



id
HAIR

1 USAGE OF SEMI COLOUR

- 1 Divide the hair into small sections and add the colour with a brush.
- 2 Make sure to cover the hair efficiently by using a sufficient amount of colour.

1.1 SEMI COLOUR

For an intense colour or a great colour change, we recommend bleaching the hair beforehand. Remember to cleanse the hair with shampoo after bleaching to make the hair ready for Colour Bomb.

- Apply Colour Bomb to clean, damp or dry hair. Process in 20 minutes.
- Rinse the hair thoroughly with cold water. Do not use shampoo.
- Do not shampoo the hair for 24 hours following the colour application.

1.2 INTENSE NIOPHLEX SEMI COLOUR

For an intense and long-lasting semi colour, you may mix Colour Bomb with **Niophlex**.

- Add 1g Niophlex NO. 01 per 10g Colour Bomb.
- Mix and add on clean, dry hair. Process in 20-40 minutes.
- Rinse the hair thoroughly with cold water. Do not use shampoo.
- Add Niophlex NO. 02. Process in 20-40 minutes.
- Do not shampoo the hair for 24 hours following the colour application.

INTENSIFYING
COLOUR
BOMB

COLOUR REFRESH

May be used for refreshing already coloured hair

- Cleanse the hair with shampoo. Do not use conditioner.
- Add a sufficient amount of Colour Bomb from roots to ends.
- Process in 3 – 15 minutes.
- Rinse with water.

BE CREATIVE WITH COLOUR BOMB

Choose between 17 beautiful colours or create your own by mixing the colours.
Use Colour Bomb as a direct colour, semi colour or as a colour refresher.

IMPORTANT! Using the recipes below, you must start at a level 10 and mix 1:1 – otherwise the colour will not turn out perfectly.

INTENSIFYING
COLOUR
BOMB





id HAIR