



FBM550C - Installation Instructions

The NoviStretch™ FBM550C mask is easily secured using snap fasteners integrated into the design. This requires snap-head screws, supplied in the hardware kit, be installed on the car as described below. The initial installation should require approximately 15 minutes to complete. After setup the mask can be easily installed and removed in just under one minute.

The **FBM550C** is designed for installation on all **2010 and later 5th Generation Camaros**.

Enclosed you will find:

- FBM550C Mask
- Hardware Kit containing eight (8) snap-head screw studs; three (3) Velcro strips
- Installation Instructions & Warranty Information

Tools Required:

- Short handle Philips screwdriver
- #15 Torx head screwdriver
- Socket wrench
- 7mm socket



NOTE: Installation Video available to view at www.NoviStretch.com

Step 1

Clean the bumper and surfaces under the car and the fender wells thoroughly (*tar and grease remover is recommended*).

Step 2 (Fig. 2)

Turn the front wheels to gain easier access to the fender liner mounting screws that you will be replacing.



Step 3 (Fig. 3)

Remove the screws that attach the fender liner to the front bumper and replace as you go with the snap-head screw studs. Repeat this step on the other side of the car.



Step 4 (Fig. 4)

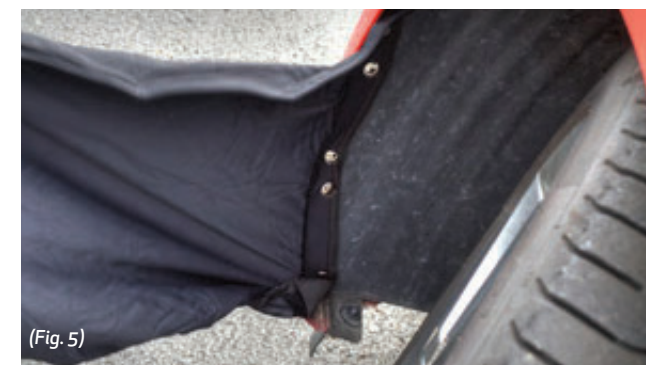
Begin the mask installation by attaching the end of the mask to the inside of the fender. Align the snaps on the mask with the snaps on the car and secure. Note the position of the Velcro strip at each end of the mask. Mark this position on the car and install a mating piece of Velcro, taking care to completely clean the mounting surface.



Caution: Allow 24-hr cure time before trying to remove the mask after it has been attached to the Velcro.

Step 5 (Fig. 5)

Stretch the mask across the front of the bumper and attach to the other side of the car, repeating the addition of the Velcro strip



Note: the tension in the mask is normal and important to the overall performance of the product.

(Instructions continue on other side)

Step 6 (Fig. 6)

Pull the bottom of the mask down under the car and note the position of the Velcro strip on the bottom/center of the mask. Mark this position on the car and install a mating piece of Velcro, taking care to completely clean the mounting surface.



(Fig. 6)

Caution: Allow 24 hr. cure time before trying to remove the mask after it has been attached.

Step 7 (Fig. 7)

Locate and slightly loosen the screw holding the corner of the air dam on each side of the car allowing the bottom edge of the mask to go between the bumper and the air dam.



(Fig. 7)

Note: Do not install mask over the air-dam.

Step 8 (Fig. 8.1 and 8.2)

Open the hood on the car and remove only the male portion of the pushpin that aligns with the corner snap on the mask. Install a snap head screw stud in the female part of this pushpin (*Take care not to over tighten this screw*). Pull the top of the mask up and secure the corner snap. Pass the top of the mask under the hood release handle and secure the other corner snap.



(Fig. 8.1)



(Fig. 8.2)

Special Installation Instructions

A front license plate may be installed over the mask without causing harm to the mask. The small holes made by the mounting screws will not cause the fabric to "run". Thumbscrews may be used to make the removal of the license plate more convenient.

Cleaning and Care Instructions

- The mask can be cleaned by rinsing in water to remove any dirt or debris then squeezing the water out and let air-dry. Wash (by hand) only as necessary.
- Use a concentrated soap solution on areas of the mask that may be particularly dirty.
- Always ensure areas covered by the mask are clean and free of sand and grit before installing the mask.

Cleaning and Care Instructions cont...

- For the best life do not leave the mask on the car while parked in the sun for extended periods.
- Avoid obstacles and low clearance areas in the roadway that may come in contact with the bottom of the car causing the mask to snag and the material to tear.

Notice: Patent Pending; NoviStretch™ Copyright © 2015 Novigo Designs, LLC. All Rights Reserved.

NOVIGO DESIGNS™ TWELVE (12) MONTH LIMITED WARRANTY

Novigo Designs, LLC warrants this product against "defects in material and workmanship" for a period of twelve (12) months from the original date of purchase by the original consumer purchaser. For full details and explanation of warranty coverage, requirements and policy – please go to the "Support" section of www.NoviStretch.com.

Novigo Designs (and its authorized distributors) liability is limited to the materials and workmanship of the product. Novigo Designs is not responsible for damage caused by the product to the paint or finish of the vehicle. To avoid any possible damage and to get the maximum benefit from your Novigo Designs product, carefully follow the installation and care instructions provided. Novigo Designs, LLC.