

T-9995N

5" Heavy Duty

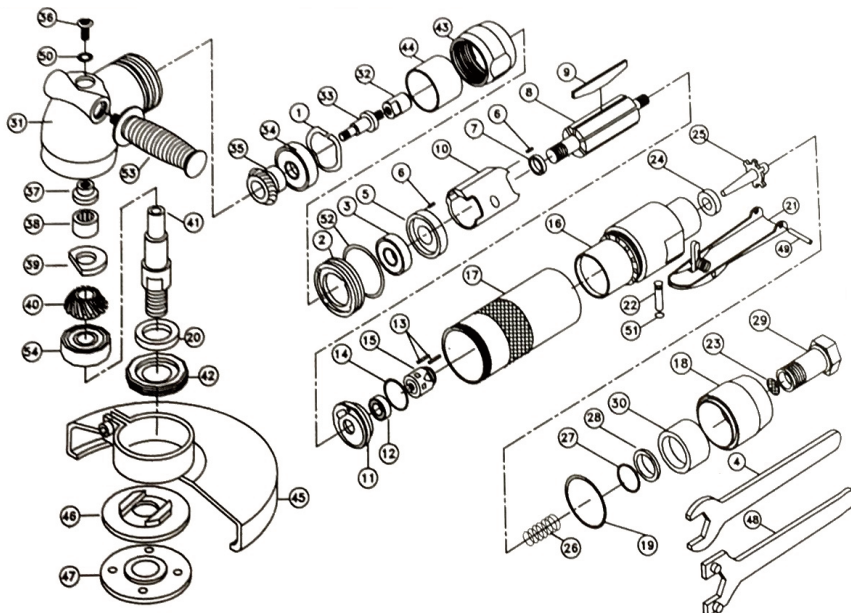
Angle Grinder



OILING INSTRUCTIONS:
OIL AFTER EACH USE WITH
1/2 TEASPOON OF AIRTOOL
OIL THROUGH THE AIR INLET.
RUN FOR ONE SECOND TO
COAT ALL INTERNAL PARTS

USE TYPE 27 WHEELS,
 Gloves, Eye Protection
 and Hearing Protection

See general operating
 instructions



USE 90 PSI MAXIMUM

Ref #	Part #	Description	Qty.	Ref #	Part #	Description	Qty.
1	9995N01	Wave Spring	1	28	9995N28	Spacer	1
2	9995N02	Adapter	1	29	9995N29	Air Inlet	1
3	9995N03	Bearing	1	30	9995N30	Felt	1
4	9995N04	Wrench	1	31	9995N31	Angle Housing	1
5	9995N05	Front End Plate	1	32	9995N32	Coupling Insert	1
6	9995N06	Pin	2	33	9995N33	Adapter	1
7	9995N07	Spacer	1	34	9995N34	Bearing	1
8	9995N08	Rotor	1	35	9995N35	Pinion	1
9	9995N09	Rotor Blade (set of 4)	1 set	36	9995N36	Screw	1
10	9995N10	Cylinder	1	37	9995N37	Gear Oil Plate	1
11	9995N11	Rear End Plate	1	38	9995N38	Bearing	1
12	9995N12	Bearing	1	39	9995N39	Wick	1
13	9995N13	Pin	2	40	9995N40	Bevel Gear	1
14	9995N14	Gasket	1	41	9995N41	Spindle	1
15	9995N15	Governor Assembly	1	42	9995N42	Retainer	1
16	9995N16	Throttle Housing	1	43	9995N43	Lock Ring	1
17	9995N17	Housing	1	44	9995N44	Spacer	1
18	9995N18	Rear Silencer	1	45	9995N45	Guard Assembly	1
19	9995N19	O-Ring	1	46	9995N46	Rear Nut	1
20	9995N20	Felt	1	47	9995N47	Front Nut	1
21	9995N21	Safety Lever Assembly	1	48	9995N48	Flange Nut Wrench	1
22	9995N22	Valve Stem	1	49	9995N49	Pin	1
23	9995N23	Screen	1	50	9995N50	O-Ring	1
24	9995N24	Valve Seat	1	51	9995N51	O-Ring	1
25	9995N25	Tip Valve	1	52	9995N52	O-Ring	1
26	9995N26	Spring	1	53	9995N53	Side Handle	1
27	9995N27	O-Ring	1	54	9995N54	Bearing	1

505 N. Railroad Ave. 33435
 P.O. Box 1117 33425
 Boynton Beach, Florida

SEE OUR CATALOG
 at
www.taylorpneumatic.com

Ph. (561) 732-1111
 Fax (561) 731-4412
 Toll Free 800-805-8665

General instructions for type 27 Grinders



OILING INSTRUCTIONS:
OIL AFTER EACH USE WITH 1/2 TABLESPOON OF AIRTOOL OIL THROUGH THE AIR INLET. RUN FOR ONE SECOND TO COAT ALL INTERNAL PARTS.

TYPE 27 GRINDERS - GENERAL INSTRUCTIONS

1. ALWAYS DISCONNECT THE TOOL FROM AIR SOURCE WHEN CHANGING ACCESSORIES OR SERVICING THE TOOL

2. USE SAFETY GLASSES, FULL FACE SHIELDS, HEARING PROTECTION AND GLOVES.

3. STAY IN CONTROL OF THE GRINDER - DO NOT OVER REACH.

4. ALWAYS REMOVE WRENCHES FROM THE TOOL AFTER SERVICING. WRENCHES LEFT ATTACHED MAY RESULT IN SERIOUS HARM TO THE OPERATOR.

5. VIBRATION MAY BE HARMFUL TO YOUR ARMS AND HANDS. WEAR PROTECTION.

6. INSPECT THE TOOL AND AIR SUPPLY ON A REGULAR BASIS.

7. DO NOT REMOVE GUARDS OR SAFETY DEVICES. DO NOT MODIFY OR DEFEAT SAFETY DEVICES.

8. DO NOT MAKE CONTACT WITH ELECTRICAL LINES.

9. LEAVE TRIGGER OFF BEFORE CONNECTING THE TOOL TO THE AIR SUPPLY. AVOID ACCIDENTAL STARTS.

10. WEAR THE PROPER CLOTHING. DO NOT WEAR JEWELRY, LOOSE CLOTHING, OR LONG HAIR AS IT CAN GET CAUGHT IN ROTATING PARTS. KEEP GLOVES AWAY FROM ROTATING PARTS.

11. DO NOT WORK IN HAZARDOUS ATMOSPHERES WHERE SPARKS COULD IGNITE OR DETONATE FUMES.

12. WATCH WHAT YOU ARE DOING. USE COMMON SENSE WHEN OPERATING PNEUMATIC TOOLS. DO NOT USE PNEUMATIC TOOLS WHEN TIRED OR UNDER THE INFLUENCE OF MEDICATION, ALCOHOL OR DRUGS. SERIOUS PERSONAL INJURY MAY RESULT FROM A MOMENTS INATTENTION.

13. USE 90 PSI OF CLEAN AIR AT THE TOOL. USE 3/8" HOSE OR LARGER WITH FITTINGS 9/32 MINIMUM I.D.

14. ONLY USE CLEAN DRY COMPRESSED AIR. NEVER USE OXYGEN, CARBON DIOXIDE, COMBUSTIBLE GASES OR ANY OTHER BOTTLED GAS TO POWER THIS TOOL.

15. SECURE YOUR WORK BEFORE STARTING - USE CLAMPS OR FIND A SUITABLE WAY TO MAINTAIN STABILITY.

16. STORE TOOLS IN A CLEAN DRY ENVIRONMENT.

17. DO NOT USE DAMAGED TOOLS - MARK, AND RETURN FOR SERVICE.

18. NEVER FORCE THE TOOL. LET THE TOOL DO THE WORK.

19. STOP USE IMMEDIATELY IF TOOL IS MAKING AN UNUSUAL NOISE OR VIBRATION. HAVE TOOL CHECKED BY PROFESSIONAL TECHNICIAN.

20. OPERATE AT RATED TOOL SPEED.

21. ALWAYS USE A GRINDING WHEEL WITH A MAXIMUM SPEED RATING EQUAL TO OR GREATER THAN THE LABELED SPEED OF THE TOOL.

22. USE ONLY REINFORCED TYPE 27 WHEELS 7" OR 9" IN DIAMETER .

23. FOLLOW WHEEL MANUFACTURERS MOUNTING INSTRUCTIONS.

24. DO NOT OPERATE WITHOUT THE WHEEL GUARD IN PLACE.

25. WORK IN A WELL VENTILATED AREA AND USE APPROVED PERSONAL PROTECTIVE EQUIPMENT SUCH AS DUST MASKS, THAT ARE SPECIFICALLY DESIGNED TO FILTER OUT MICROSCOPIC PARTICLES. SOME DUST CREATED BY POWER SANDING, SAWING, GRINDING AND OTHER CONSTRUCTION ACTIVITIES CONTAIN CHEMICALS KNOWN TO CAUSE CANCER, BIRTH DEFECTS OR OTHER REPRODUCTIVE HARM. SOME EXAMPLES OF THESE CHEMICALS ARE: CRYSTALLINE SILICA FROM BRICKS, CEMENT AND OTHER MASONARY PRODUCTS, ARSENIC AND CHROMIUM FROM CHEMICALLY TREATED LUMBER AND LEAD FROM LEAD BASED PAINTS.

YOUR RISK FROM EXPOSURE VARIES, DEPENDING ON HOW OFTEN YOU DO THIS TYPE OF WORK. TO REDUCE YOUR EXPOSURE TO THESE CHEMICALS WEAR PROTECTIVE MASKS AND CLOTHING.

26. KEEP CHILDREN, PETS AND BYSTANDERS AWAY WHILE OPERATING A PNEUMATIC TOOL. DISTRACTIONS CAN CAUSE YOU TO LOSE CONTROL. PROTECT OTHERS IN THE WORK AREA FROM DEBRIS SUCH AS METAL FILINGS AND SPARKS. PROVIDE BARRIERS OR SHIELDS AS NEEDED.

27. LUBRICATION - THIS TOOL REQUIRES A HIGH SPEED GREASE TO LUBRICATE THE PINION GEARS. ADD GREASE THROUGH THE GREASE FITTINGS AS NEEDED, APPROXIMATELY EVERY 8 HOURS.

28. THESE WARNINGS AND INSTRUCTIONS CAN NOT COVER ALL POSSIBLE CONDITIONS OR SITUATIONS. THE OPERATOR MUST UNDERSTAND THAT COMMON SENSE AND CAUTIONS ARE FACTORS WHICH CAN NOT BE BUILT INTO THE PRODUCT BUT MUST BE SUPPLIED BY THE OPERATOR.

505 N. Railroad Ave. 33435
P.O. Box 1117 33425
Boynton Beach, Florida

SEE OUR CATALOG
at
www.taylorpneumatic.com

PH. 561-732-1111
FAX 561-731-4412
Toll Free 800-805-8665