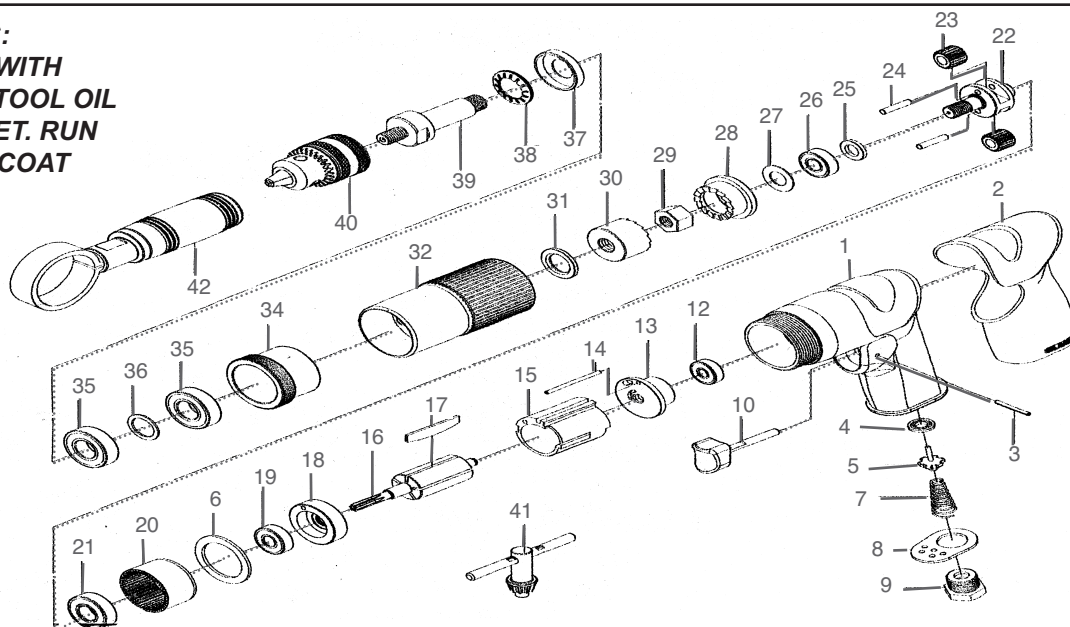


T-9988HD

1/2" Hammer Drill



OILING INSTRUCTIONS:
OIL AFTER EACH USE WITH
1/2 TEASPOON OF AIRTOOL OIL
THROUGH THE AIRINLET. RUN
FOR ONE SECOND TO COAT
ALL INTERNAL PARTS



USE 90 PSI MAXIMUM

Ref #	Part #	Description	Qty.	Ref #	Part #	Description	Qty.
1	9988HD01	Housing	1	23	9988HD23	Planet Gear	2
2	9988HD02	Grip	1	24	9988HD24	Needle Roller	2
3	9988HD03	Spring Pin	1	25	9988HD25	Washer	1
4	9988HD04	Valve Seat	1	26	9988HD26	Ball Bearing	1
5	9988HD05	Throttle Valve	1	27	9988HD27	Washer	1
6	9988HD06	Washer	1	28	9988HD28	Clutch Seat	1
7	9988HD07	Valve Spring	1	29	9988HD29	Clamp Nut	1
8	9988HD08	Exhaust Deflector	1	30	9988HD30	Clutch	1
9	9988HD09	Air Inlet	1	31	9988HD31	Washer	1
10	9988HD10	Trigger	1	32	9988HD32	Connect Nut	1
12	9988HD12	Ball Bearing	1	34	9988HD34	Bearing Seat Assembly	1
13	9988HD13	Rear End Plate	1	35	9988HD35	Ball Bearing	2
14	9988HD14	Dowel Pin	1	36	9988HD36	Washer	1
15	9988HD15	Cylinder	1	37	9988HD37	Protector Cover	1
16	9988HD16	Rotor	1	38	9988HD38	Washer Assembly	1
17	9988HD17	Rotor Blade (set of 5)	1 set	39	9988HD39	Spindle	1
18	9988HD18	Front End Plate	1	40	T-7788HR-A	Chuck	1
19	9988HD19	Ball Bearing	1	41	T-7788HR-B	Key	1
20	9988HD20	Internal Gear	1	42	9988HD42	Copper Collar / Handle Assembly	1
21	9988HD21	Ball bearing	1				
22	9988HD22	Idle Gear Seat	1				

505 N. Railroad Ave. 33435
P.O. Box 1117 33425
Boynton Beach, Florida

SEE OUR CATALOG
at
www.taylorpneumatic.com

0116TPTC /all rights reserved /COPYRIGHT 2016 / final

Ph. (561) 732-1111
Fax (561) 731-4412
Toll Free 800-805-8665