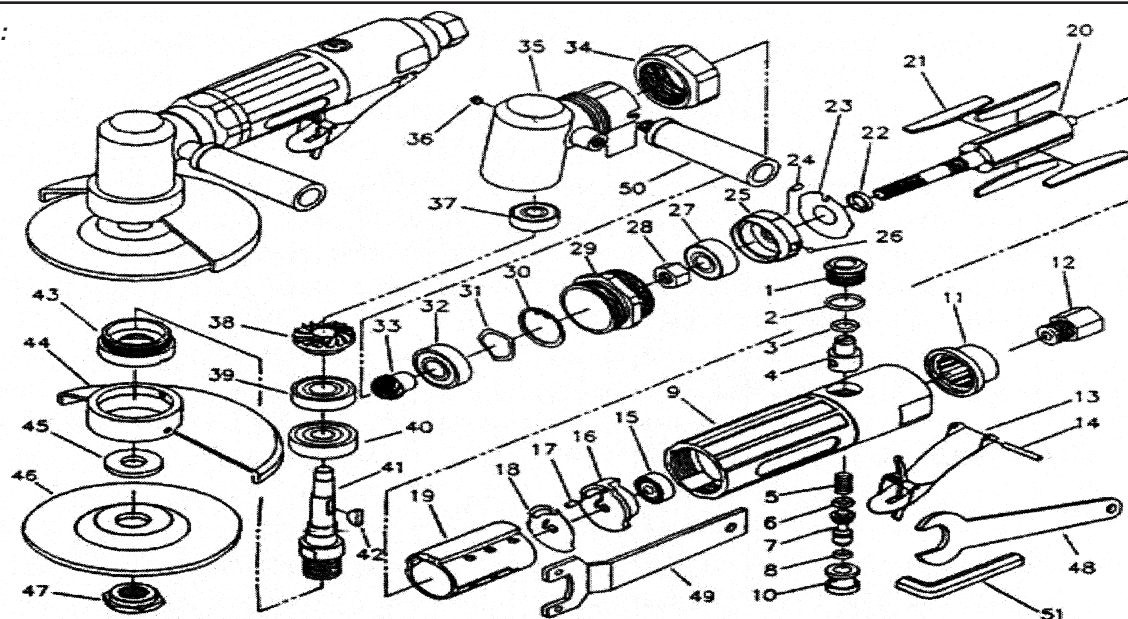


T-9969G 4" Angle Grinder



OILING INSTRUCTIONS:
OIL AFTER EACH USE
WITH 1/2 TEASPOONS
OF AIRTOOL OIL
THROUGH THE AIR
INLET. RUN FOR
ONE SECOND TO
COAT ALL
INTERNAL PARTS



USE 90 PSI MAXIMUM

Ref #	Part #	Description	Qty.	Ref #	Part #	Description	Qty.
1	9969G01	Screw	1	27	9969G27	Bearing	1
2	9969G02	O-Ring	1	28	9969G28	Nut	1
3	9969G03	O-Ring	1	29	9969G29	Lock Ring	1
4	9969G04	Regulator	1	30	9969G30	Retaining Ring	1
5	9969G05	Spring	1	31	9969G31	Spring Washer	1
6	9969G06	O-Ring	1	32	9969G32	Bearing	1
7	9969G07	Valve Stem	1	33	9969G33	Pinion Gear	1
8	9969G08	O-Ring	1	34	9969G34	Cap	1
9	9969G09	Motor Housing	1	35	9969G35	Angle Housing	1
10	9969G10	Valve Bushing	1	36	9969G36	Grease Fitting	1
11	9969G11	Muffler	1	37	9969G37	Bearing	1
12	9969G12	Air Inlet	1	38	9969G38	Bevel Gear	1
13	9969G13	Lever	1	39	9969G39	Bearing	1
14	9969G14	Pin	1	40	9969G40	Bearing	1
15	9969G15	Bearing	1	41	9969G41	Spindle	1
16	9969G16	Back End Plate	1	42	9969G42	Key	1
17	9969G17	Pin	1	43	9969G43	Clamp Nut	1
18	9969G18	Steel Plate	1	44	9969G44	Guard	1
19	9969G19	Cylinder	1	45	9969G45	Washer	1
20	9969G20	Rotor	1	46	9969G46	Grinding Wheel	1
21	9969G21	Rotor Blade (set of 4)	1set	47	9969G47	Nut	1
22	9969G22	Spacer	1	48	9969G48	Wrench 15MM	1
23	9969G23	Steel Plate	1	49	9969G49	Wrench 26MM	1
24	9969G24	Pin	1	50	9969G50	Handle	1
25	9969G25	Front End Plate	1	51	9969G51	Allen Wrench	1
26	9969G26	Ball	1				

505 N. Railroad Ave. 33435
P.O. Box 1117 33425
Boynton Beach, Florida

SEE OUR CATALOG
at
www.taylorpneumatic.com

0116TPTC /all rights reserved /COPYRIGHT 2016 / final

Ph. (561) 732-1111
Fax (561) 731-4412
Toll Free 800-805-8665

General instructions for type 27 Grinders



OILING INSTRUCTIONS:
OIL AFTER EACH USE WITH 1/2 TEASPOON OF AIRTOOL OIL THROUGH THE AIR INLET. RUN FOR ONE SECOND TO COAT ALL INTERNAL PARTS.

TYPE 27 GRINDERS - GENERAL INSTRUCTIONS

1. ALWAYS DISCONNECT THE TOOL FROM AIR SOURCE WHEN CHANGING ACCESSORIES OR SERVICING THE TOOL
2. USE SAFETY GLASSES, FULL FACE SHIELDS, HEARING PROTECTION AND GLOVES.
3. STAY IN CONTROL OF THE GRINDER - DO NOT OVER REACH.
4. ALWAYS REMOVE WRENCHES FROM THE TOOL AFTER SERVICING. WRENCHES LEFT ATTACHED MAY RESULT IN SERIOUS HARM TO THE OPERATOR.
5. VIBRATION MAY BE HARMFUL TO YOUR ARMS AND HANDS. WEAR PROTECTION.
6. INSPECT THE TOOL AND AIR SUPPLY ON A REGULAR BASIS.
7. DO NOT REMOVE GUARDS OR SAFETY DEVICES. DO NOT MODIFY OR DEFEAT SAFETY DEVICES.
8. DO NOT MAKE CONTACT WITH ELECTRICAL LINES.
9. LEAVE TRIGGER OFF BEFORE CONNECTING THE TOOL TO THE AIR SUPPLY. AVOID ACCIDENTAL STARTS.
10. WEAR THE PROPER CLOTHING. DO NOT WEAR JEWELRY, LOOSE CLOTHING, OR LONG HAIR AS IT CAN GET CAUGHT IN ROTATING PARTS. KEEP GLOVES AWAY FROM ROTATING PARTS.
11. DO NOT WORK IN HAZARDOUS ATMOSPHERES WHERE SPARKS COULD IGNITE OR DETONATE FUMES.
12. WATCH WHAT YOU ARE DOING. USE COMMON SENSE WHEN OPERATING PNEUMATIC TOOLS. DO NOT USE PNEUMATIC TOOLS WHEN TIRED OR UNDER THE INFLUENCE OF MEDICATION, ALCOHOL OR DRUGS. SERIOUS PERSONAL INJURY MAY RESULT FROM A MOMENTS INATTENTION.
13. USE 90 PSI OF CLEAN AIR AT THE TOOL. USE 3/8" HOSE OR LARGER WITH FITTINGS 9/32 MINIMUM I.D.
14. ONLY USE CLEAN DRY COMPRESSED AIR. NEVER USE OXYGEN, CARBON DIOXIDE, COMBUSTIBLE GASES OR ANY OTHER BOTTLED GAS TO POWER THIS TOOL.
15. SECURE YOUR WORK BEFORE STARTING - USE CLAMPS OR FIND A SUITABLE WAY TO MAINTAIN STABILITY.
16. STORE TOOLS IN A CLEAN DRY ENVIRONMENT.
17. DO NOT USE DAMAGED TOOLS - MARK, AND RETURN FOR SERVICE.
18. NEVER FORCE THE TOOL. LET THE TOOL DO THE WORK.
19. STOP USE IMMEDIATELY IF TOOL IS MAKING AN UNUSUAL NOISE OR VIBRATION. HAVE TOOL CHECKED BY PROFESSIONAL TECHNICIAN.
20. OPERATE AT RATED TOOL SPEED.
21. ALWAYS USE A GRINDING WHEEL WITH A MAXIMUM SPEED RATING EQUAL TO OR GREATER THAN THE LABELED SPEED OF THE TOOL.
22. USE ONLY REINFORCED TYPE 27 WHEELS 7" OR 9" IN DIAMETER .
23. FOLLOW WHEEL MANUFACTURERS MOUNTING INSTRUCTIONS.
24. DO NOT OPERATE WITHOUT THE WHEEL GUARD IN PLACE.
25. WORK IN A WELL VENTILATED AREA AND USE APPROVED PERSONAL PROTECTIVE EQUIPMENT SUCH AS DUST MASKS, THAT ARE SPECIFICALLY DESIGNED TO FILTER OUT MICROSCOPIC PARTICLES. SOME DUST CREATED BY POWER SANDING, SAWING, GRINDING AND OTHER CONSTRUCTION ACTIVITIES CONTAIN CHEMICALS KNOWN TO CAUSE CANCER, BIRTH DEFECTS OR OTHER REPRODUCTIVE HARM. SOME EXAMPLES OF THESE CHEMICALS ARE: CRYSTALLINE SILICA FROM BRICKS, CEMENT AND OTHER MASONARY PRODUCTS, ARSENIC AND CHROMIUM FROM CHEMICALLY TREATED LUMBER AND LEAD FROM LEAD BASED PAINTS. YOUR RISK FROM EXPOSURE VARIES, DEPENDING ON HOW OFTEN YOU DO THIS TYPE OF WORK. TO REDUCE YOUR EXPOSURE TO THESE CHEMICALS WEAR PROTECTIVE MASKS AND CLOTHING.
26. KEEP CHILDREN, PETS AND BYSTANDERS AWAY WHILE OPERATING A PNEUMATIC TOOL. DISTRACTIONS CAN CAUSE YOU TO LOSE CONTROL. PROTECT OTHERS IN THE WORK AREA FROM DEBRIS SUCH AS METAL FILINGS AND SPARKS. PROVIDE BARRIERS OR SHIELDS AS NEEDED.
27. LUBRICATION - THIS TOOL REQUIRES A HIGH SPEED GREASE TO LUBRICATE THE PINION GEARS. ADD GREASE THROUGH THE GREASE FITTINGS AS NEEDED, APPROXIMATELY EVERY 8 HOURS.
28. THESE WARNINGS AND INSTRUCTIONS CAN NOT COVER ALL POSSIBLE CONDITIONS OR SITUATIONS. THE OPERATOR MUST UNDERSTAND THAT COMMON SENSE AND CAUTIONS ARE FACTORS WHICH CAN NOT BE BUILT INTO THE PRODUCT BUT MUST BE SUPPLIED BY THE OPERATOR.

505 N. Railroad Ave. 33435
P.O. Box 1117 33425
Boynton Beach, Florida

SEE OUR CATALOG
at
www.taylorpneumatic.com

PH. 561-732-1111
FAX 561-731-4412
Toll Free 800-805-8665