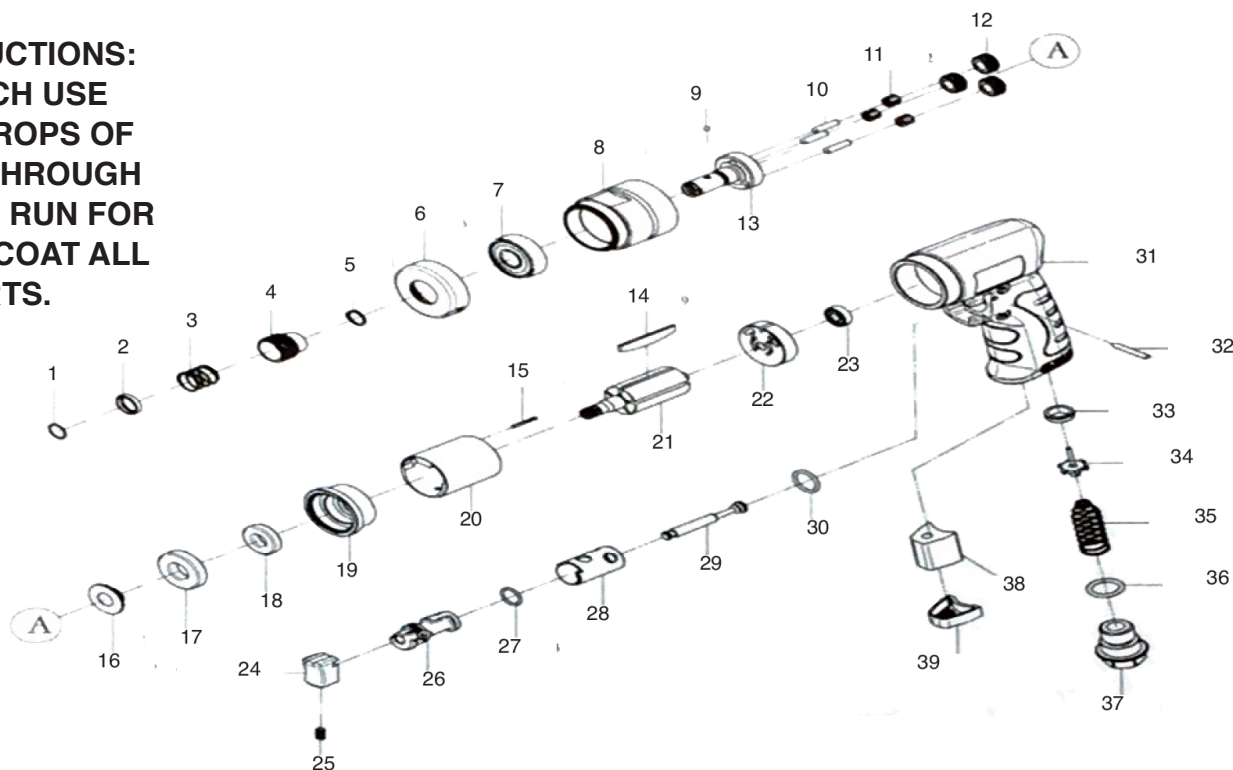


# T-9963

## HEAVY DUTY 1/4" SCREWDRIVER



**OILING INSTRUCTIONS:**  
**OIL AFTER EACH USE**  
**WITH A FEW DROPS OF**  
**AIRTOOL OIL THROUGH**  
**THE AIR INLET. RUN FOR**  
**1 SECOND TO COAT ALL**  
**INTERNAL PARTS.**



**USE 90 PSI MAXIMUM**

REF #	PART #	DESCRIPTION	QTY	REF #	PART #	DESCRIPTION	QTY
1	996301	RETAINING RING	1	21	996321	ROTOR	1
2	996302	WASHER	1	22	996322	REAR PLATE	1
3	996303	SPRING	1	23	996323	BEARING	1
4	996304	BUSHING	1	24	996324	LEVER	1
5	996305	RETAINING RING	1	25	996325	SCREW	1
6	996306	FRONT CAP	1	26	996326	REVERSE VALVE	1
7	996307	BEARING	1	27	996327	O-RING	1
8	996308	GEAR RING	1	28	996328	BUSHING	1
9	996309	BALL	1	29	996329	VALVE STEM	1
10	996310	PIN	3	30	996330	O-RING	1
11	996311	BEARING	3	31	996331	HANDLE	1
12	996312	GEAR	3	32	996332	PIN	1
13	996313	SPINDLE	1	33	996333	WASHER	1
14	996314	ROTOR BLADE (SET OF 5)	1 SET	34	996334	VALVE ROD	1
15	996315	PIN	1	35	996335	SPRING	1
16	996316	BUSHING	1	36	996336	O-RING	1
17	996317	BEARING	1	37	996337	AIR INLET	1
18	996318	BEARING	1	38	996338	MUFFLER	1
19	996319	FRONT PLATE	1	39	996339	MUFFLER	1
20	996320	CYLINDER	1				