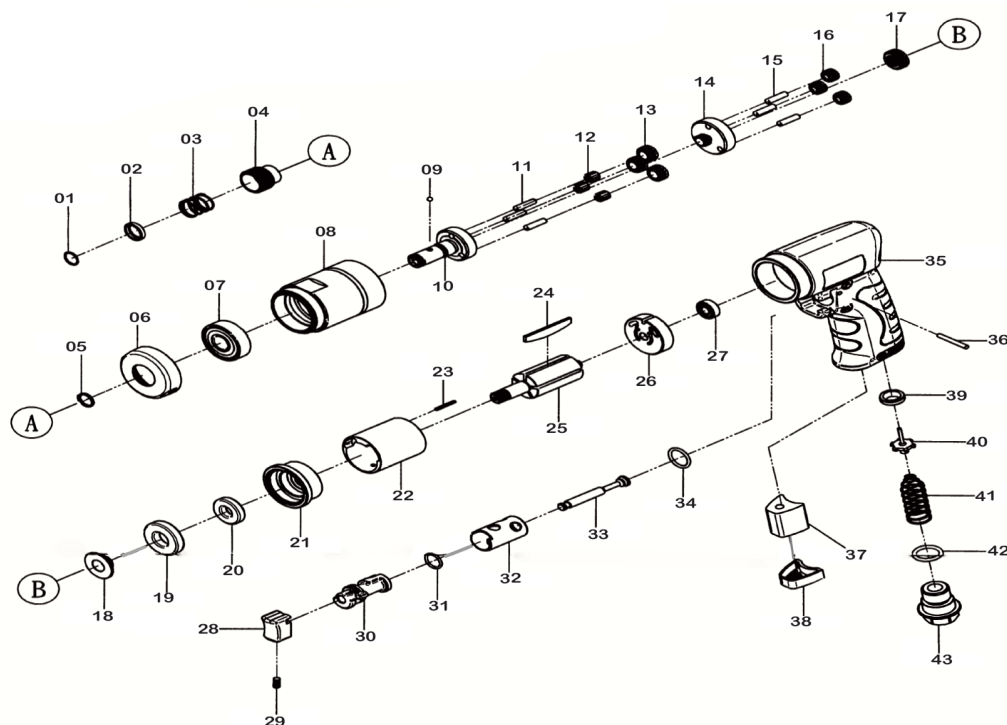


# T-9963HR

## AIR SCREWDRIVER



**OILING INSTRUCTIONS:**  
**OIL AFTER EACH USE**  
**WITH A FEW DROPS OF**  
**AIRTOOL OIL THROUGH**  
**THE AIR INLET. RUN FOR**  
**1 SECOND TO COAT ALL**  
**INTERNAL PARTS.**



### USE 90 PSI MAXIMUM

REF #	PART #	DESCRIPTION	QTY	REF #	PART #	DESCRIPTION	QTY
1	9963HR01	RETAINING RING	1	23	9963HR23	PIN	1
2	9963HR02	WASHER	1	24	9963HR24	ROTOR BLADE (5 PER SET)	1set
3	9963HR03	SPRING	1	25	9963HR25	ROTOR	1
4	9963HR04	BUSHING	1	26	9963HR26	REAR PLATE	1
5	9963HR05	RETAINING RING	1	27	9963HR27	BEARING	1
6	9963HR06	FRONT CAP	1	28	9963HR28	TRIGGER	1
7	9963HR07	BEARING	1	29	9963HR29	SCREW	1
8	9963HR08	GEAR RING	1	30	9963HR30	REVERSE VALVE	1
9	9963HR09	STEEL BALL	1	31	9963HR31	O-RING	1
10	9963HR10	SPINDLE	1	32	9963HR32	BUSHING	1
11	9963HR11	PIN	3	33	9963HR33	VALVE STEM	1
12	9963HR12	BEARING	3	34	9963HR34	O-RING	1
13	9963HR13	GEAR	3	35	9963HR35	HANDLE	1
14	9963HR14	GEARED CARRIER	1	36	9963HR36	PIN	1
15	9963HR15	PIN	3	37	9963HR37	MUFFLER	1
16	9963HR16	GEAR	3	38	9963HR38	MUFFLER	1
17	9963HR17	GEAR	1	39	9963HR39	MUFFLER	1
18	9963HR18	BUSHING	1	40	9963HR40	WASHER	1
19	9963HR19	BEARING	1	41	9963HR41	SPRING	1
20	9963HR20	BEARING	1	42	9963HR42	O-RING	1
21	9963HR21	FRONT PLATE	1	43	9963HR43	AIR INLET	1
22	9963HR22	CYLINDER	1				

505 N. Railroad Ave. 33435  
P.O. Box 1117 33425  
Boynton Beach, FL

SEE MORE OF OUR CATALOG AT  
[www.taylorpneumatic.com](http://www.taylorpneumatic.com)

JUNE 2020 / ALL RIGHTS RESERVED / COPYRIGHT 2020

Ph. (561)732-1111  
Fax. (561)731-4412  
Toll Free (800) 805-8665