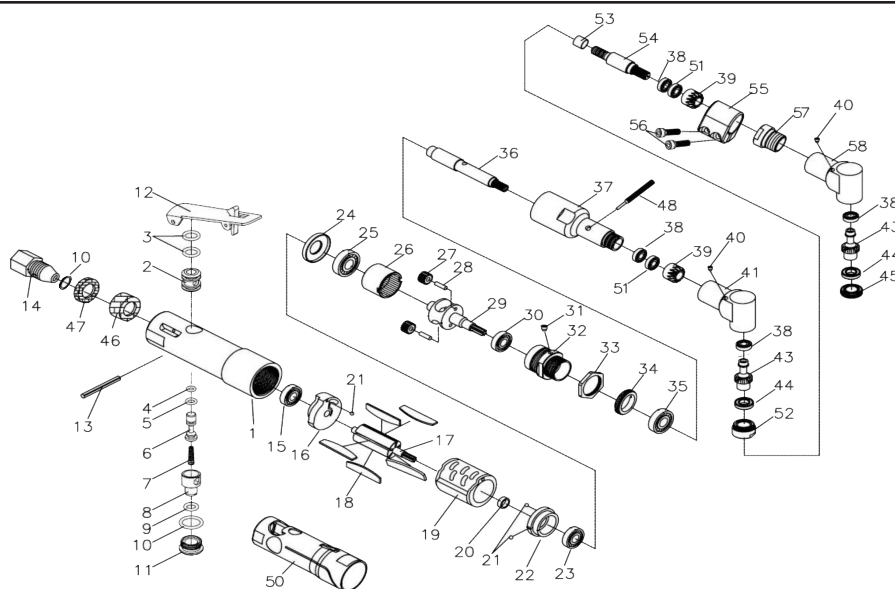


T-9953 1/4" Offset Air Angle Aircraft Drill



OILING INSTRUCTIONS:
OIL AFTER EACH USE
WITH A FEW DROPS OF
AIRTOOL OIL
THROUGH THE AIR
INLET. RUN FOR 1
SECOND TO COAT ALL
INTERNAL PARTS.



USE 90 PSI MAXIMUM

REF #	PART #	DESCRIPTION	QTY	REF #	PART #	DESCRIPTION	QTY
1	995001	Housing	1	29	995029	Gear Carrier	1
2	995002	Throttle Valve Bushing	1	30	995030	Bearing	1
3	995003	O-Ring	2	31	995031	Grease Fitting	1
4	995004	O-Ring	1	32	995032	Connector	1
5	995005	O-Ring	1	33	995033	Lock Nut	1
6	995006	Throttle Pin	1	34	995034	Lock Ring	1
7	995007	Spring	1	35	995035	Bearing	1
8	995008	Regulator	1	36	995036	Spindle	1
9	995009	O-Ring	1	37	995037	Housing	1
10	995010	O-Ring	2	38	995038	Bearing	4
11	995011	Plug	1	39	995039	Bevel Gear Shaft	2
12	995012	Throttle Lever	1	40	995040	Grease Fitting	1
13	995013	Pin	1	41	995041	Angle Housing	1
14	995014	Air Inlet	1	43	995043	Bevel Gear	2
15	995015	Bearing	1	44	995044	Bearing	2
16	995016	Rear End Plate	1	45	995045	Lock Ring	1
17	995017	Rotor	1	46	995046	Muffler	1
18	995018	Rotor Blade (Set of 5)	1set	47	995047	Silencer	1
19	995019	Cylinder	1	48	995048	Stop Pin	1
20	995020	Stop Ring	1	50	995050	Grip	1
21	995021	Steel Ball	3	51	995051	Bearing	2
22	995022	Front End Plate	1	52	995352	Lock Nut	1
23	995023	Bearing	1	53	995353	Spacer	1
24	995024	Bearing Cover	1	54	995354	Spindle	1
25	995025	Bearing	1	55	995355	Connector	1
26	995026	Internal Gear	1	56	995356	Hex Screw	2
27	995027	Gear	2	57	995357	Clamp Nut	1
28	995028	Pin	2	58	995358	Angle Housing	1

505 N. Railroad Ave. 33435
P.O. Box 1117 33425
Boynton Beach, Florida

FOR WARRANTY INFORMATION &
WARRANTY REGISTRATION VISIT
www.taylorpneumatic.com

9923TPTC /all rights reserved /COPYRIGHT 2023 / final

Ph. (561) 732-1111
Fax (561) 731-4412
Toll Free 800-805-8665