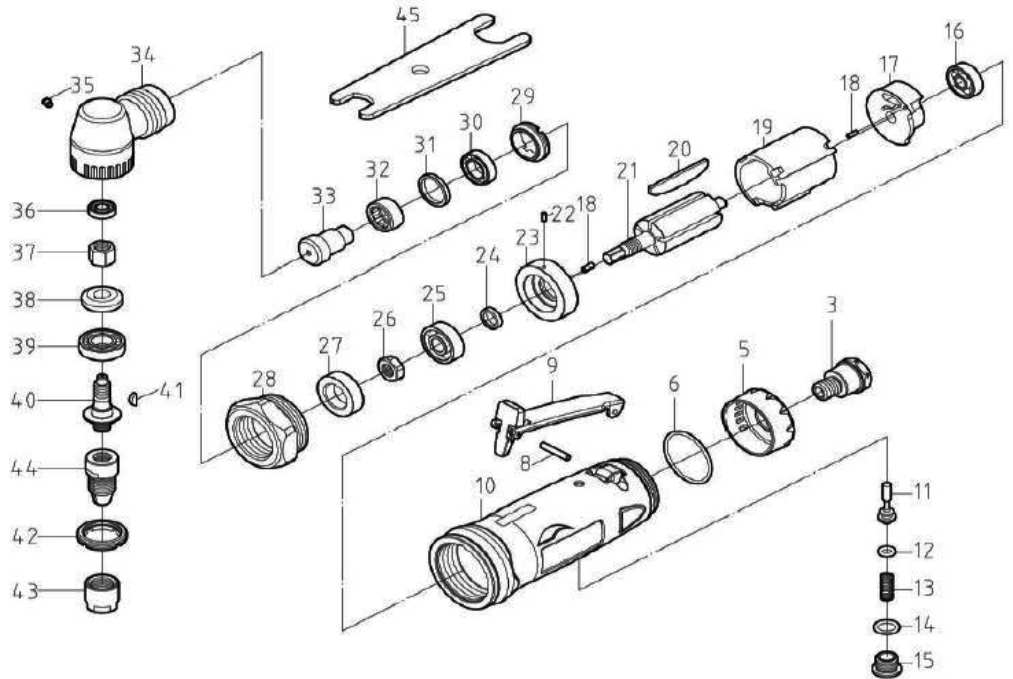


# T-9949R

## 1/4" ANGLE INDUSTRIAL DIE GRINDER



**OILING INSTRUCTIONS:  
OIL AFTER EACH USE  
WITH A FEW DROPS OF  
AIRTOOL OIL THROUGH  
THE AIR INLET. RUN FOR  
1 SECOND TO COAT ALL  
INTERNAL PARTS.**



**USE 90 PSI MAXIMUM**

REF #	PART #	DESCRIPTION	QTY	REF #	PART #	DESCRIPTION	QTY
3	9947R03	AIR INLET	1	27	9949R27	WASHER	1
5	9947R05	EXHAUST DEFLECTOR	1	28	9949R28	LOCK NUT	1
6	9947R06	O-RING	1	29	9949R29	CYLINDER SET SCREW	1
8	9947R08	SPRING PIN	1	30	9949R30	BALL BEARING	1
9	9947R09	LEVER	1	31	9949R31	WASHER	1
10	9947R10	HOUSING	1	32	9949R32	NEEDLE BEARING	1
11	9947R11	PIN VALVE ROD	1	33	9949R33	DRIVING GEAR SPINDLE	1
12	9947R12	O-RING	1	34	9949R34	ANGLE HOUSING	1
13	9947R13	SPRING	1	35	9949R35	OIL DROP	1
14	9947R14	O-RING	1	36	9949R36	BALL BEARING	1
15	9947R15	SCREW	1	37	9949R37	DOCK NUT	1
16	9947R16	BALL BEARING	1	38	9949R38	BEVEL GEAR	1
17	9947R17	REAR PLATE	1	39	9949R39	BALL BEARING	1
18	9947R18	SPRING PIN	2	40	9949R40	ANVIL	1
19	9947R19	CYLINDER	1	41	9949R41	KEY	1
20	9947R20	BLADE (5)	1set	42	9949R42	CYLINDER SET SCREW	1
21	9949R21	ROTOR	1	43	9949R43	LOCK NUT	1
22	9949R22	PIN	1	44	9949R44	COLLET FOUNDATION	1
23	9949R23	FRONT PLATE	1	45	9949R45	WRENCH	1
24	9949R24	WASHER	1				
25	9949R25	BALL BEARING	1				
26	9949R26	LOCK NUT	1				

505 N. Railroad Ave. 33435  
P.O. Box 1117 33425  
Boynton Beach, FL

FOR WARRANTY INFORMATION  
AND REGISTRATION VISIT

[www.taylorpneumatic.com](http://www.taylorpneumatic.com)

JUNE 2020 / ALL RIGHTS RESERVED / COPYRIGHT 2020

Ph. (561)732-1111  
Fax. (561)731-4412  
Toll Free (800) 805-8665