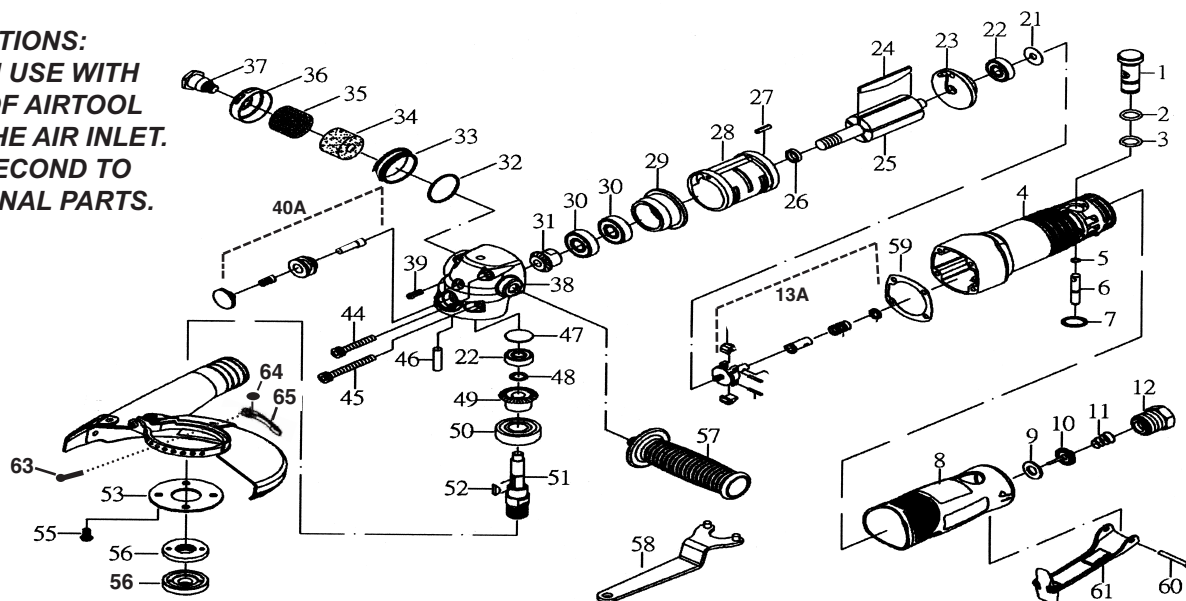


# T-9915ND Angle Grinder With Vacuum Guard



**OILING INSTRUCTIONS:**  
OIL AFTER EACH USE WITH  
1/2 TEASPOON OF AIRTOOL  
OIL THROUGH THE AIR INLET.  
RUN FOR ONE SECOND TO  
COAT ALL INTERNAL PARTS.



## USE 90 PSI MAXIMUM

Ref #	Part #	Description	Qty.	Ref #	Part #	Description	Qty.
1	991401	Regulator	1	37	991437	Adapter	1
2	991402	O-Ring	1	38	9915ND38	Angle Housing	1
3	991403	O-Ring	1	39	991439	Screw	1
4	991404	Housing	1	40A	99140A	Stop Assembly	1
5	991405	O-Ring	1	44	991444	Screw	2
6	991406	Valve Stem	1	45	991445	Screw	2
7	991407	Snap Ring	1	46	991446	Pin	1
8	991408	Rubber Grip	1	47	991447	Spacer	1
9	991409	Washer	1	48	991448	Retaining Ring	1
10	991410	Valve	1	49	991449	Bevel Gear	1
11	991411	Spring	1	50	991450	Bearing	1
12	991412	Inlet Bushing	1	51	9915N51	Shaft 5/8 - 11	1
13A	991413A	Governor Assembly	1	52	991452	Key	1
21	991421	Washer	2	53	991453	Face Plate	1
22	991422	Bearing	2	54	9915ND54	Guard 5"	1
23	991423	Rear End Plate	1	55	991455	Screw	4
24	991424	Rotor Blade (set of 5)	1 set	56	9915N56	Disc Nut (set of 2)	1 set
25	991425	Rotor	1	57	991457	Handle	1
26	991426	Bearing Spacer	1	58	9915N58	Spanner Wrench	1
27	991427	Pin	1	59	991459	Gasket	1
28	991428	Cylinder	1	60	991460	Spring Pin	1
29	991429	Front End Plate	1	61	991461	Safety Lever	1
30	991430	Bearing	2	63	9915ND63	Screw	1
31	991431	Bevel Gear	1	64	9915ND64	Bushing	1
32	991432	O-Ring	1	65	9915ND65	Adjust Lever	1
33	991433	Bushing	1				
34	991434	Silencer	1				
35	991435	Stainless Mesh	1				
36	991436	Exhaust Sleeve	1				

505 N. Railroad Ave. 33435  
P.O. Box 1117 33425  
Boynton Beach, Florida

SEE OUR CATALOG  
at  
[www.taylorpneumatic.com](http://www.taylorpneumatic.com)

0116TPTC /all rights reserved /COPYRIGHT 2016 / final

Ph. (561) 732-1111  
Fax (561) 731-4412  
Toll Free 800-805-8665

# General Instructions Grinders

**T-7714, T-7715, T-7715N, T-8814EX, T-8815,  
T-8859G, T-9914, T-9914EX T-9915, T-9915N,  
T-9915ND**



## **OILING INSTRUCTIONS**

OIL AFTER EACH USE WITH 1/2 TABLESPOON OF AIRTOOL OIL THROUGH THE AIR INLET. RUN FOR ONE SECOND TO COAT ALL INTERNAL PARTS.

## **TYPE 27 GRINDERS - GENERAL INSTRUCTIONS**

1. ALWAYS DISCONNECT THE TOOL FROM AIR SOURCE WHEN CHANGING ACCESSORIES OR SERVICING THE TOOL.
2. USE SAFETY GLASSES, FULL FACE SHIELDS, HEARING PROTECTION AND GLOVES.
3. STAY IN CONTROL OF THE GRINDER - DO NOT OVER REACH.
4. ALWAYS REMOVE WRENCHES FROM THE TOOL AFTER SERVICING. WRENCHES LEFT ATTACHED MAY RESULT IN SERIOUS HARM TO THE OPERATOR.
5. VIBRATION MAY BE HARMFUL TO YOUR ARMS AND HANDS. WEAR PROTECTION.
6. INSPECT THE TOOL AND AIR SUPPLY ON A REGULAR BASIS.
7. DO NOT REMOVE GUARDS OR SAFETY DEVICES. DO NOT MODIFY OR DEFEAT SAFETY DEVICES.
8. DO NOT MAKE CONTACT WITH ELECTRICAL LINES.
9. LEAVE TRIGGER OFF BEFORE CONNECTING THE TOOL TO THE AIR SUPPLY. AVOID ACCIDENTAL STARTS.
10. WEAR THE PROPER CLOTHING. DO NOT WEAR JEWELRY, LOOSE CLOTHING, OR LONG HAIR AS IT CAN GET CAUGHT IN ROTATING PARTS. KEEP GLOVES AWAY FROM ROTATING PARTS.
11. DO NOT WORK IN HAZARDOUS ATMOSPHERES WHERE SPARKS COULD IGNITE OR DETONATE FUMES.
12. WATCH WHAT YOU ARE DOING. USE COMMON SENSE WHEN OPERATING PNEUMATIC TOOLS. DO NOT USE PNEUMATIC TOOLS WHEN TIRED OR UNDER THE INFLUENCE OF MEDICATION, ALCOHOL OR DRUGS. SERIOUS PERSONAL INJURY MAY RESULT FROM A MOMENTS INATTENTION.
13. USE 90 PSI AT THE TOOL. USE 3/8" HOSE OR LARGER WITH FITTINGS 9/32 MINIMUM I.D.
14. ONLY USE CLEAN DRY COMPRESSED AIR. NEVER USE OXYGEN, CARBON DIOXIDE, COMBUSTIBLE GASES OR ANY OTHER BOTTLED GAS TO POWER THIS TOOL.
15. SECURE YOUR WORK BEFORE STARTING - USE CLAMPS OR FIND A SUITABLE WAY TO MAINTAIN STABILITY.
16. STORE TOOLS IN A CLEAN DRY ENVIRONMENT.
17. DO NOT USE DAMAGED TOOLS - MARK, AND RETURN FOR SERVICE.
18. NEVER FORCE THE TOOL. LET THE TOOL DO THE WORK.
19. STOP USE IMMEDIATELY IF TOOL IS MAKING AN UNUSUAL NOISE OR VIBRATION. HAVE TOOL CHECKED BY PROFESSIONAL TECHNICIAN.
20. OPERATE AT RATED TOOL SPEED.

21. ALWAYS USE A GRINDING WHEEL WITH A MAXIMUM SPEED RATING EQUAL TO OR GREATER THAN THE LABELED SPEED OF THE TOOL.
22. USE ONLY REINFORCED TYPE 27 WHEELS 2", 4" or 4-1/2" IN DIAMETER, DEPENDING ON THE TOOL.
23. FOLLOW WHEEL MANUFACTURERS MOUNTING INSTRUCTIONS.
24. DO NOT OPERATE WITHOUT THE WHEEL GUARD IN PLACE.
25. WORK IN A WELL VENTILATED AREA AND USE APPROVED PERSONAL PROTECTIVE EQUIPMENT SUCH AS DUST MASKS, THAT ARE SPECIFICALLY DESIGNED TO FILTER OUT MICROSCOPIC PARTICLES. SOME DUST CREATED BY POWER SANDING, SAWING, GRINDING AND OTHER CONSTRUCTION ACTIVITIES CONTAIN CHEMICALS KNOWN TO CAUSE CANCER, BIRTH DEFECTS OR OTHER REPRODUCTIVE HARM. SOME EXAMPLES OF THESE CHEMICALS ARE: CRYSTALLINE SILICA FROM BRICKS, CEMENT AND OTHER MASONARY PRODUCTS, ARSENIC AND CHROMIUM FROM CHEMICALLY TREATED LUMBER AND LEAD FROM LEAD BASED PAINTS. YOUR RISK FROM EXPOSURE VARIES, DEPENDING ON HOW OFTEN YOU DO THIS TYPE OF WORK. TO REDUCE YOUR EXPOSURE TO THESE CHEMICALS WEAR PROTECTIVE MASKS AND CLOTHING.
26. KEEP CHILDREN, PETS AND BYSTANDERS AWAY WHILE OPERATING A PNEUMATIC TOOL. DISTRACTIONS CAN CAUSE YOU TO LOSE CONTROL. PROTECT OTHERS IN THE WORK AREA FROM DEBRIS SUCH AS METAL FILINGS AND SPARKS. PROVIDE BARRIERS OR SHIELDS AS NEEDED.
27. LUBRICATION - THIS TOOL REQUIRES A HIGH SPEED GREASE TO LUBRICATE THE PINION GEARS. ADD GREASE THROUGH THE GREASE FITTINGS AS NEEDED, APPROXIMATELY EVERY 8 HOURS.
28. THESE WARNINGS AND INSTRUCTIONS CAN NOT COVER ALL POSSIBLE CONDITIONS OR SITUATIONS. THE OPERATOR MUST UNDERSTAND THAT COMMON SENSE AND CAUTIONS ARE FACTORS WHICH CAN NOT BE BUILT INTO THE PRODUCT BUT MUST BE SUPPLIED BY THE OPERATOR.

505 N. Railroad Ave. 33435  
P.O. Box 1117 33425  
Boynton Beach, Florida

SEE OUR CATALOG  
at  
[www.taylorpneumatic.com](http://www.taylorpneumatic.com)

0116TPTC /all rights reserved /COPYRIGHT 2016 / final

Ph. (561) 732-1111  
Fax (561) 731-4412  
Toll Free 800-805-8665