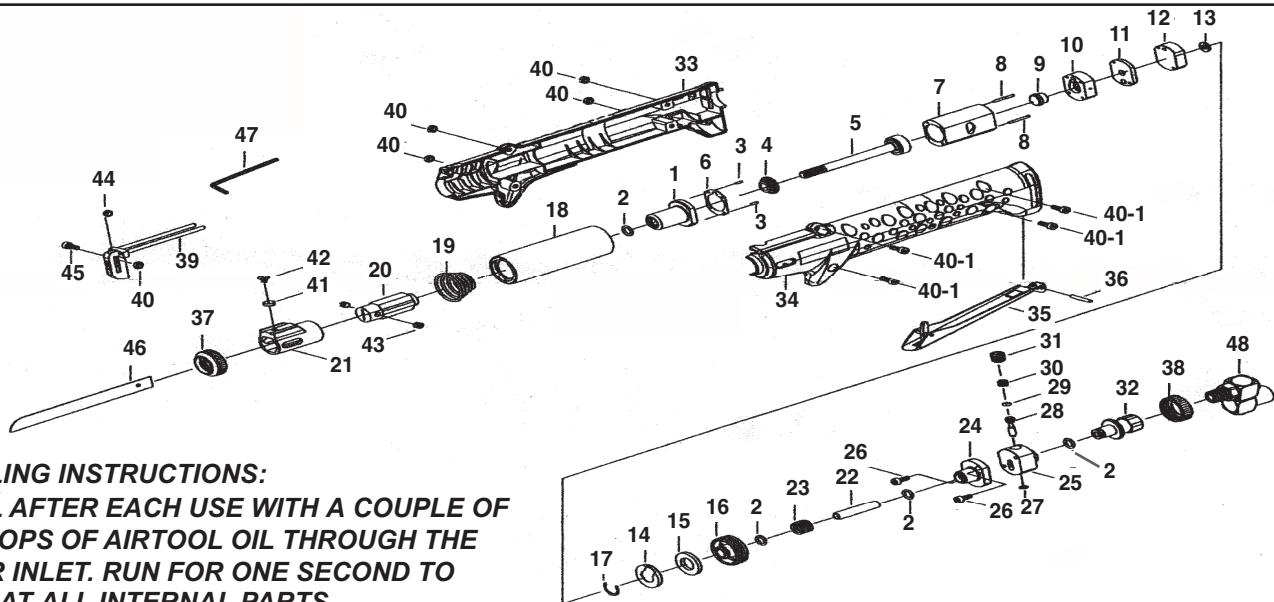


# T-9902 3/4" Stroke Vibration and Noise Reduced Recip. Saw



**OILING INSTRUCTIONS:**  
OIL AFTER EACH USE WITH A COUPLE OF DROPS OF AIRTOOL OIL THROUGH THE AIR INLET. RUN FOR ONE SECOND TO COAT ALL INTERNAL PARTS

## USE 90 PSI MAXIMUM

Ref #	Part #	Description	Qty.	Ref #	Part #	Description	Qty.
1	990201	Cylinder Head Assembly	1	26	990226	Screw	2
2	990202	O-Ring	4	27	990227	O-Ring	1
3	990203	Front Dowel Pin	2	28	990228	Valve Stem	1
4	990204	Bumper	1	29	990229	O-Ring	1
5	990205	Piston Assembly	1	30	990230	Spring	1
6	990206	Gasket	1	31	990231	Plug Screw	1
7	990207	Cylinder	1	32	990232	Air Inlet	1
8	990208	Rear Dowel Pin	2	33	990233	Right Housing	1
9	990209	Automatic Valve	1	34	990234	Left Housing	1
10	990210	Valve Body	1	35	990235	Safety Lever	1
11	990211	Valve Seat	1	36	990236	Rear Dowel Pin	1
12	990212	Valve Cap	1	37	990237	Front Lock Nut	1
13	990213	Rubber Washer	1	38	990238	Rear Lock Nut	1
14	990214	Muffler Cap	1	39	990239	Saw Blade Guide	1
15	990215	Muffler	1	40	990240	Nuts	5
16	990216	Adaptor	1	40-1	990240-1	Screw	4
17	990217	Retaining Ring	1	41	990241	Spacer	1
18	990218	Main Liner	1	42	990242	Screw	1
19	990219	Spring	1	43	990243	Set Screw	1
20	990220	Blade Holder	1	44	990244	Guide Wheel	1
21	990221	Sliding Liner	1	45	990245	Screw	1
22	990222	Connecting Hose	1	46	T-990218,24	18, 24 TPI Blades	1 ea.
23	990223	Spring	1	47	990247	Allen Wrench 3mm	1
24	990224	Lid Valve	1	48	T-7922	Hose Swivel	1
25	990225	Valve Case	1				

505 N. Railroad Ave. 33435  
P.O. Box 1117 33425  
Boynton Beach, Florida

FOR WARRANTY INFORMATION &  
WARRANTY REGISTRATION VISIT  
[www.taylorpneumatic.com](http://www.taylorpneumatic.com)

0223TPTC / all rights reserved / COPYRIGHT 2023 / final

Ph. (561) 732-1111  
Fax (561) 731-4412  
Toll Free 800-805-8665